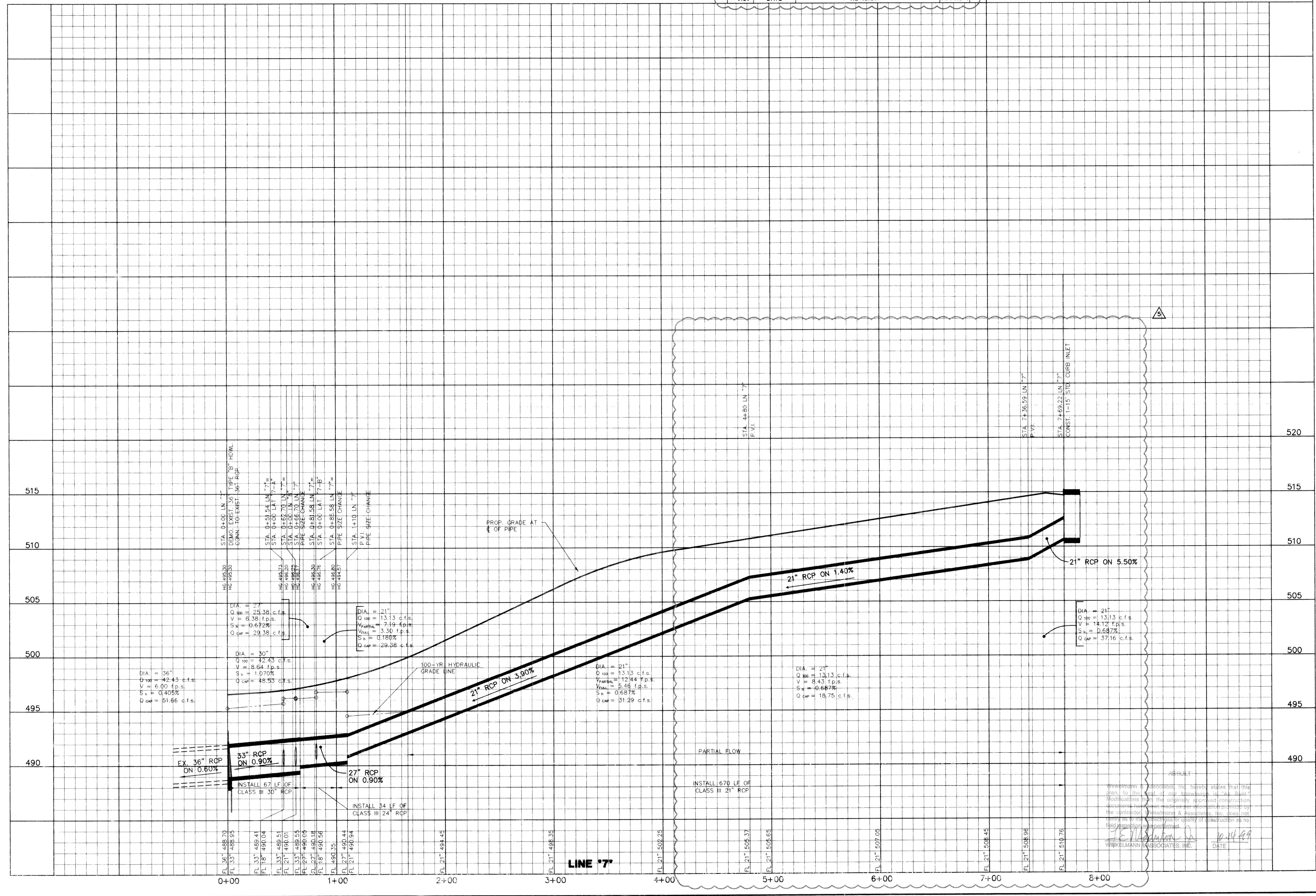


C:\WORK\14633516 Tue Aug 25 19 51:04 1999

NO.	DATE	REVISION	APPROV.
5	8/25/98	REVISED LINE 7 PER FIELD REVISIONS	

BENCHMARK:
PK NAIL IN \bar{C} OF CARUTH LANE & ALLEY INTER-SECTION 150' ± EAST OF MORNINGSTAR DRIVE. ELEV. 491.68

BENCHMARK:
"X" CHISELED IN \bar{C} OF ALLEY EAST OF MORNINGSTAR DRIVE WITHIN 3RD LOT NORTH OF MIDNIGHT PASS. ELEV. 513.26



Scale: 1"=4' Date: 8/25/98

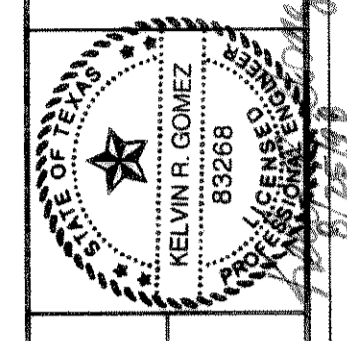
Designed By:	K.G.
Drawn By:	K.G.
Checked By:	W.A.L.
File:	14633516.DWG
Project No.:	14633.01

SHEET
17
OF
31

STORM SEWER PROFILES
LINE '7'

CARUTH LAKE PHASE ONE
S.S. MCGURRY SURVEY, ABSTRACT NO. 146
M.B. JONES SURVEY, ABSTRACT NO. 122
ROCKWALL COUNTY, TEXAS

LUMBERMEN'S INVESTMENT CORPORATION
5405 BELLEVUE ROAD, SUITE 225
DALLAS, TEXAS 75246



Winkelmann & Associates, Inc.
CONSULTING CIVIL ENGINEERS & SURVEYORS
1000 HILLTOP BLVD., SUITE 200
DALLAS, TEXAS 75220
(972) 890-7099 FAX