

STORM SEWER CURVE DATA

CURVE	RADIUS	DELTA	TANGENT	LENGTH	BEARING	CHORD
CV-1	55.00'	90°00'00"	55.00'	96.39'	N70°48'00"W	77.78'
CV-2	65.00'	88°25'18"	63.23'	100.31'	S70°00'35"W	90.65'
CV-3	300.00'	10°42'46"	28.13'	56.09'	S71°08'05"W	56.01'
CV-4	55.00'	84°00'11"	31.52'	51.31'	N34°29'23"E	46.84'
CV-5	55.00'	60°17'26"	31.94'	57.87'	N04°20'43"E	55.24'
CV-6	50.00'	90°00'00"	50.00'	78.54'	S10°12'00"W	70.71'
CV-7	65.00'	25°28'48"	14.70'	28.91'	S76°56'24"W	28.67'
CV-8	50.00'	90°00'00"	50.00'	78.54'	N44°40'48"E	70.71'
CV-9	35.00'	54°08'48"	17.89'	33.08'	N63°14'48"W	31.86'

PAVING CURVE DATA

CURVE	RADIUS	DELTA	TANGENT	LENGTH	BEARING	CHORD
C-1	300.00'	24°12'08"	64.32'	126.72'	S13°41'56"E	125.78'

PAVING TANGENT DATA

TANGENT	BEARING	LENGTH
T1	S25°48'00"E	590.82'
T2	S01°35'52"E	279.38'

APPROVALS

DATE: 6/3/99

REVISION: ADDED 5' REC. CURB INLET

Winkelmann & Associates, Inc.
CONSULTING CIVIL ENGINEERS & SURVEYORS
12000 Westpark Road, Suite 200
Dallas, Texas 75240
(972) 462-2888 FAX

SEAL OF THE STATE OF TEXAS

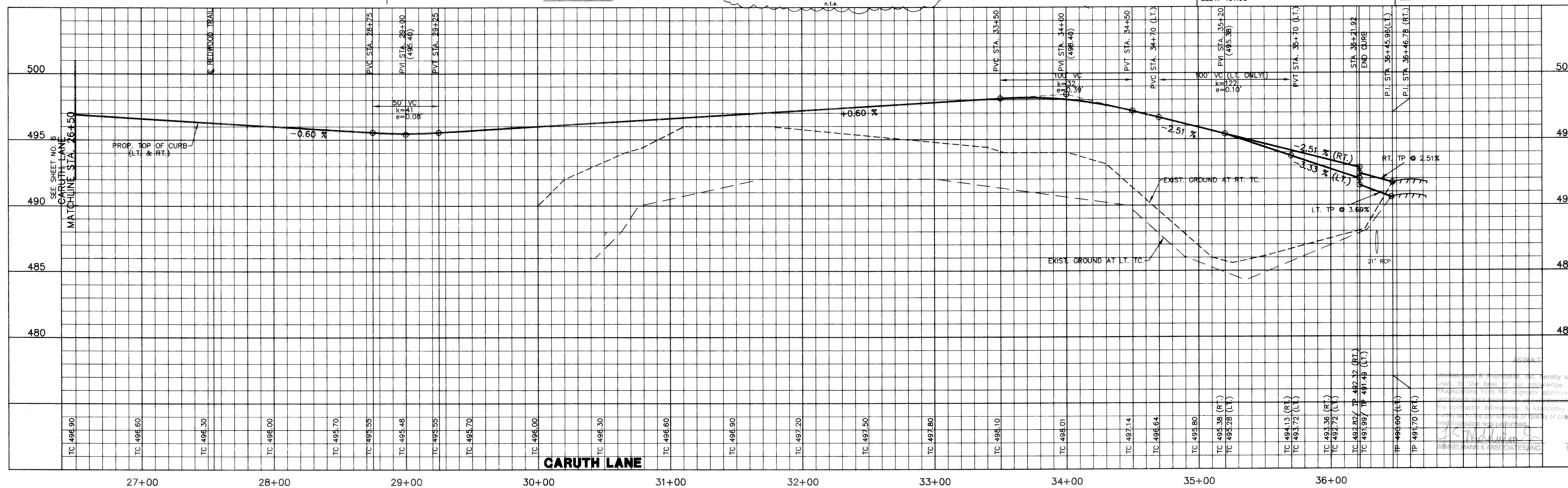
COMMISSIONER OF PUBLIC SAFETY

DATE: 6/3/99

REVISION: ADDED 5' REC. CURB INLET

CARUTH LAKE PHASE FIVE
S.S. MCCURRY SURVEY ABSTRACT NO. 146
M.B. JONES CITY OF ROCKWALL
CITY OF ROCKWALL, TEXAS

LUMBERMEN'S INVESTMENT CORPORATION
3499 W. WOODLAND ROAD
DALLAS, TEXAS 75240



Scale: 1"=40' Date: 5/28/98

Designed By: RB

Drawn By: MK

Checked By: F.E.M.

File: 14830733.DWG

Project No.: 14693.01

Winkelmann & Associates, Inc. hereby states that this plan, to the best of our knowledge is "As Built". Modifications from the original approved construction plan are indicated by the "As Built" symbol. The quantity of materials shown on this plan is based on the information provided by the client and is not a guarantee of quantity or quality of construction as no inspection was performed.

Winkelmann & Associates, Inc.
10-19-99
DATE

SHEET 7 OF 31