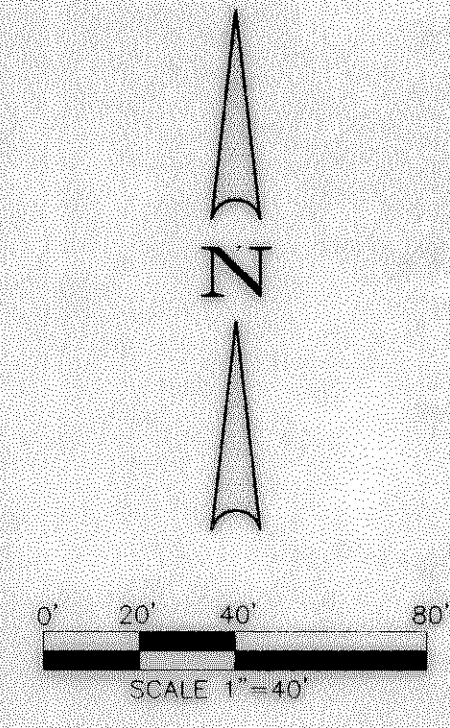
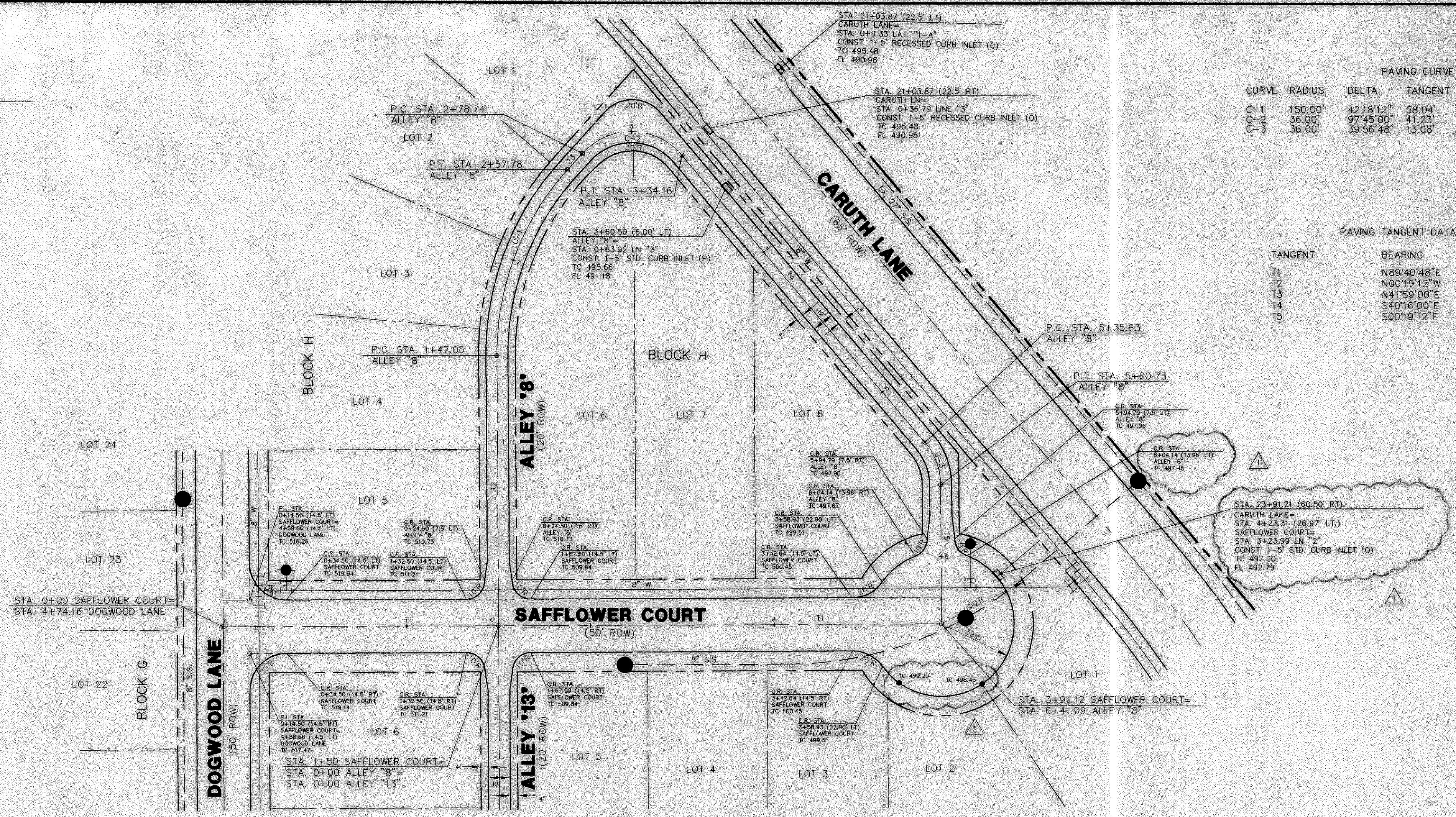


**LEGEND**

TP	TOP OF PAVING
TC	TOP OF CURB
INV	INVERT
VG	VALLEY GUTTER
CR	CURB RETURN
2	STREET STATION
1	EXIST. PAVEMENT
⊙	STORM STATION



APPROVED	REVISION	DATE	NO.
		7/23/98	1

**Winkelmann & Associates, Inc.**  
CONSULTING CIVIL ENGINEERS & SURVEYORS  
12800 Hillcrest Road, Suite 200  
Dallas, Texas 75240  
(972) 462-7000 FAX

CARUTH LANE PHASE FIVE  
S.S. MCCURRY SURVEY, ABSTRACT NO. 146  
M.B. JONES SURVEY, ABSTRACT NO. 122  
CITY OF ROCKWALL  
ROCKWALL COUNTY, TEXAS  
LUMBERMEN'S INVESTMENT CORPORATION  
5485 BELLINE ROAD, SUITE 225  
DALLAS, TEXAS 75240

**PAVING PLAN & PROFILE**  
**SAFFLOWER COURT STA. 0+00 TO STA. 3+91.12**  
**ALLEY '8' STA. 0+00 TO STA. 6+41.09**

Scale: 1"=40' Date: 5/28/98  
Designed By: KG  
Drawn By: MK  
Checked By: PEM  
File: 14633PAV2.DWG  
Project No.: 14633.01

C:\My Documents\AutoCAD Drawings\Caruth (14633)\14633PAV2 Fl1.dwg, 24 12:58:26 1998 Plotted by Cecil A. Chesher

