

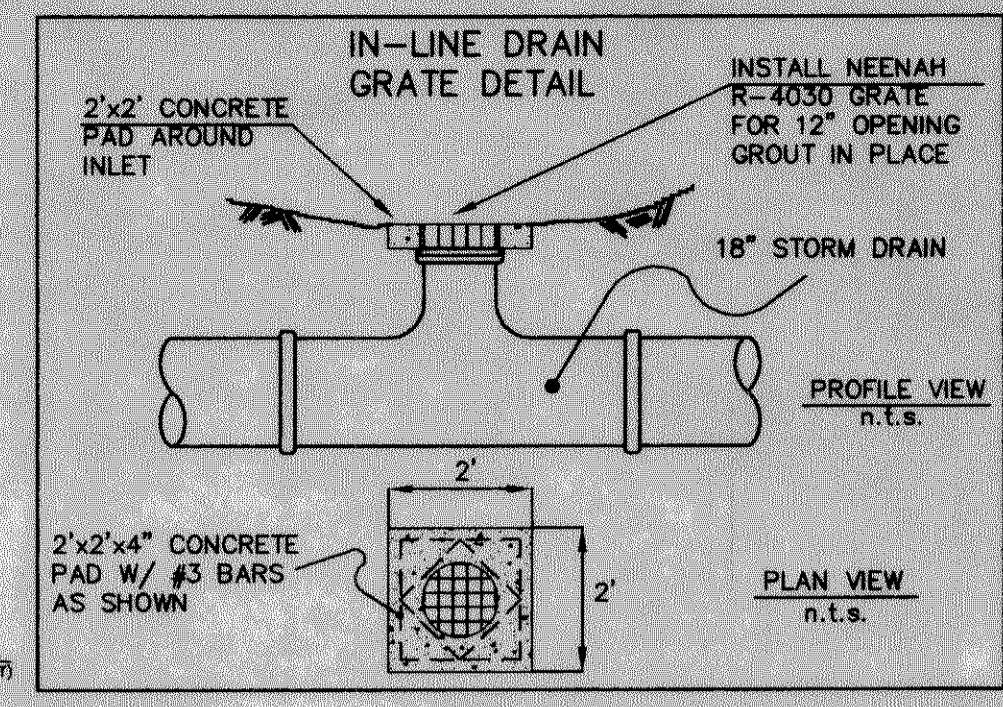
PAVING CURVE TABLE

| CURVE | RADIUS  | DELTA     | TANGENT | LENGTH  | CHORD   | BEARING     |
|-------|---------|-----------|---------|---------|---------|-------------|
| C-1   | 300.00' | 19°31'27" | 51.61'  | 102.23' | 101.73' | N09°26'31"E |

STORM CURVE TABLE

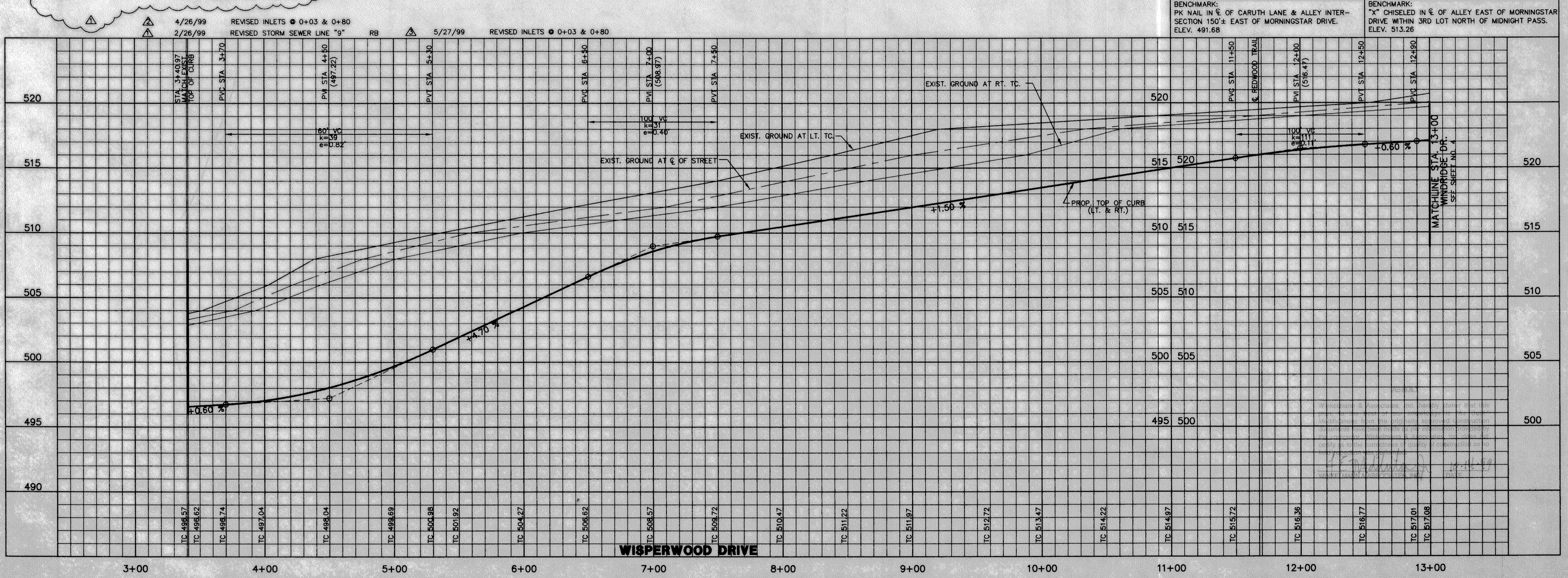
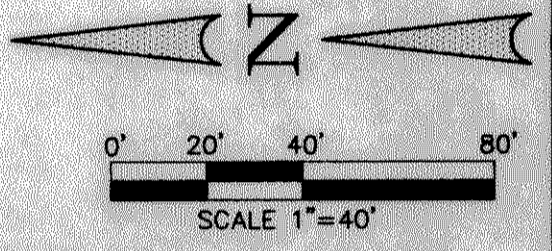
| CURVE | RADIUS  | DELTA     | TANGENT | LENGTH | CHORD  | BEARING     |
|-------|---------|-----------|---------|--------|--------|-------------|
| CV-1  | 300.00' | 16°55'14" | 44.62'  | 88.60' | 88.27' | N08°08'25"E |
| CV-2  | 50.00'  | 31°36'06" | 14.15'  | 27.58' | 27.23' | N71°15'46"W |



PAVING TANGENT TABLE

| TANGENT | BEARING     | LENGTH  |
|---------|-------------|---------|
| T1      | S00°19'12"E | 856.80' |

- LEGEND
- TP TOP OF PAVING
  - TC TOP OF CURB
  - INV INVERT
  - VG VALLEY GUTTER
  - CR CURB RETURN
  - STREET STATION
  - EXIST. PAVEMENT
  - STORM STATION



**Winklemann & Associates, Inc.**  
 CONSULTING CIVIL ENGINEERS & SURVEYORS  
 12000 Hillcrest Road, Suite 300  
 Dallas, Texas 75230  
 (972) 492-7000 FAX

CARUTH LAKE PHASE FIVE NO. 146  
 S.S. MCGOWAN DRIVE ABSTRACT NO. 122  
 CITY OF ROCKWALL  
 ROCKWALL COUNTY, TEXAS  
 LUMBERMAN'S INVESTMENT CORPORATION  
 5485 BELTUNE ROAD, SUITE 225  
 DALLAS, TEXAS 75240

**PAVING & DRAINAGE PLAN / PAVING PROFILE**  
**WISPERWOOD DR. STA. 3+40.97 TO STA. 13+00**  
**DRAINAGE PLAN LINE '9' STA. 0+00.00**  
**TO STA. 10+00**

Scale: 1" = 40' Date: 01/02/98  
 Designed By: RB  
 Drawn By: MK  
 Checked By: J.F.B.M.  
 File: 14633P39.DWG  
 Project No.: 14633.01

**SHEET**  
 3  
 OF  
 31