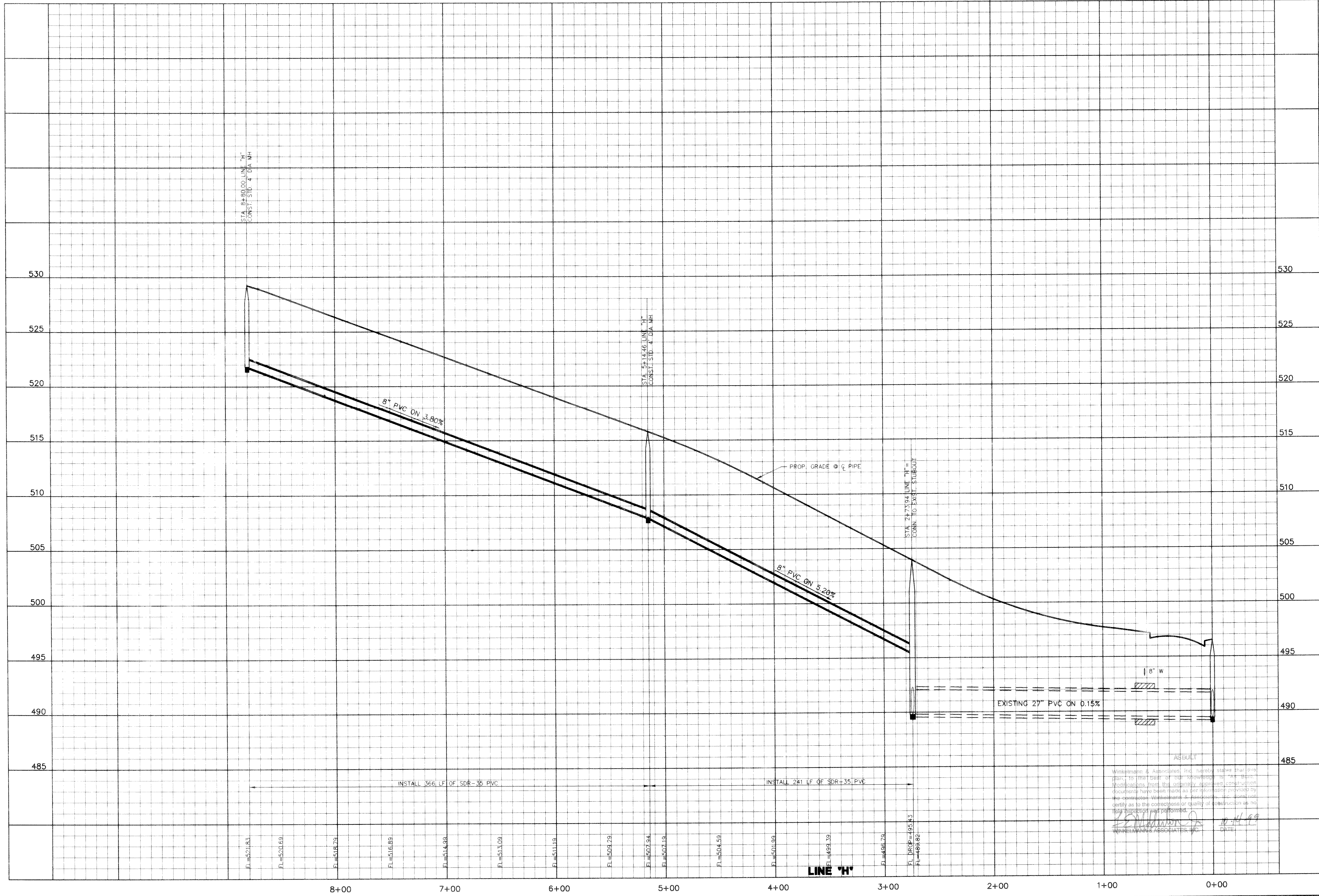
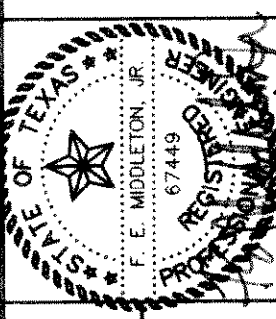


BENCHMARK:
PK NAIL IN C OF CARUTH LANE & ALLEY INTER-
SECTION 150'± EAST OF MORNINGSTAR DRIVE.
ELEV. 491.68

BENCHMARK:
"X" CHISELED IN C OF ALLEY EAST OF MORNINGSTAR
DRIVE WITHIN 3RD LOT NORTH OF MIDNIGHT PASS.
ELEV. 513.26



Winkelmann & Associates, Inc.
CONSULTING CIVIL ENGINEERS & SURVEYORS
12800 HILLCREST ROAD, SUITE 200
DALLAS, TEXAS 75244
(972) 482-7990
FAX (972) 482-7999



CARUTH LAKE PHASE FIVE
S.S. & SANITARY SEWER
M.B. JOHNS SURVEY, ABSTRACT NO. 221
CITY OF ROCKWALL,
ROCKWALL COUNTY, TEXAS
LUMBERMEN'S INVESTMENT CORPORATION
5495 BELTUNE ROAD, SUITE 225
DALLAS, TEXAS 75240

**SANITARY SEWER PROFILES
LINE 'H'**

Scale: 1"=40' H
Date: 12-19-97
Designed By: R.B.Z.N.K.
Drawn By: N.K.
Checked By: K.G.
File: 14633559.DWG
Project No.: 14633.01

Winkelmann & Associates, Inc. hereby states that this plan, to the best of our knowledge, information and belief, has been prepared in accordance with the standards of practice for the profession of civil engineering and that the construction documents have been made as per instructions provided by the operator Winkelmann & Associates, Inc. does not certify as to the correctness or quality of construction as no field inspection was performed.
E. Winkler
WINKELMANN ASSOCIATES, INC.
DATE: 12-19-97