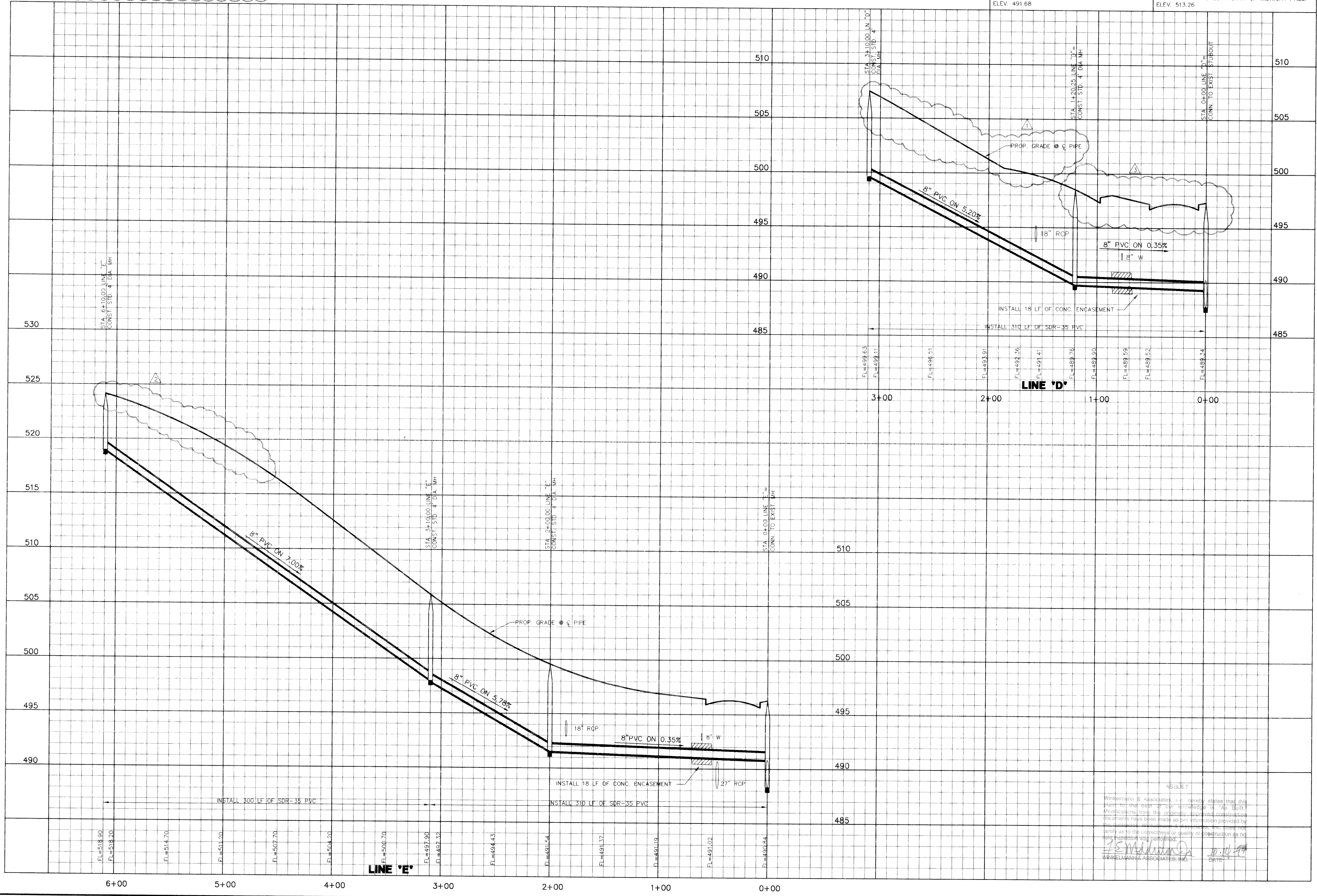


NO.	DATE	REVISION	APPROV.
1	7/23/98	REVISED GROUNDLINE OVER LINE "D"	
2	7/2/98	REVISED GROUNDLINE OVER LINE "E"	
3	7/1/98	REVISED GROUNDLINE OVER LINE "D"	

BENCHMARK:
 "X" NAIL IN C. OF CARUTH LANE & ALLEY INTER-SECTION 150'± EAST OF MORNINGSTAR DRIVE WITHIN 3RD LOT NORTH OF MIDNIGHT PASS. ELEV. 491.68

BENCHMARK:
 "X" CHISELED IN C. OF ALLEY EAST OF MORNINGSTAR DRIVE WITHIN 3RD LOT NORTH OF MIDNIGHT PASS. ELEV. 513.26



c:\my Documents\AutoCAD Drawings\Caruth (146335) (146335)7.dwg Plotted by Cecil A. Oleson on Thu Jul 23 16:32:01 1998

Winkelmann & Associates, Inc.
 CONSULTING CIVIL ENGINEERS • SURVEYORS
 2800 MILLCREEK ROAD, SUITE 200
 ROCKWALL, TEXAS 75087
 (972) 967-0998 FAX (972) 967-0998

SANITARY SEWER PROFILES
LINE "D" & LINE "E"

Scale : 1"=4'-0"

Designed By : KG/NK

Drawn By : NK/CAC

Checked By : KG

File : 14633557.DWG

Project No. : 146335.01

Date : 7/1/98

DATE

Winkelmann & Associates, Inc. hereby states that this plan to the best of our knowledge is "As Built". Modifications from the original approved construction documents have been made as per information provided by the contractor, Winkelman & Associates, Inc. from the field as to the correctness or quality of construction as no field inspection was performed.

[Signature]
 WINKELMANN & ASSOCIATES, INC.

22

OF

31