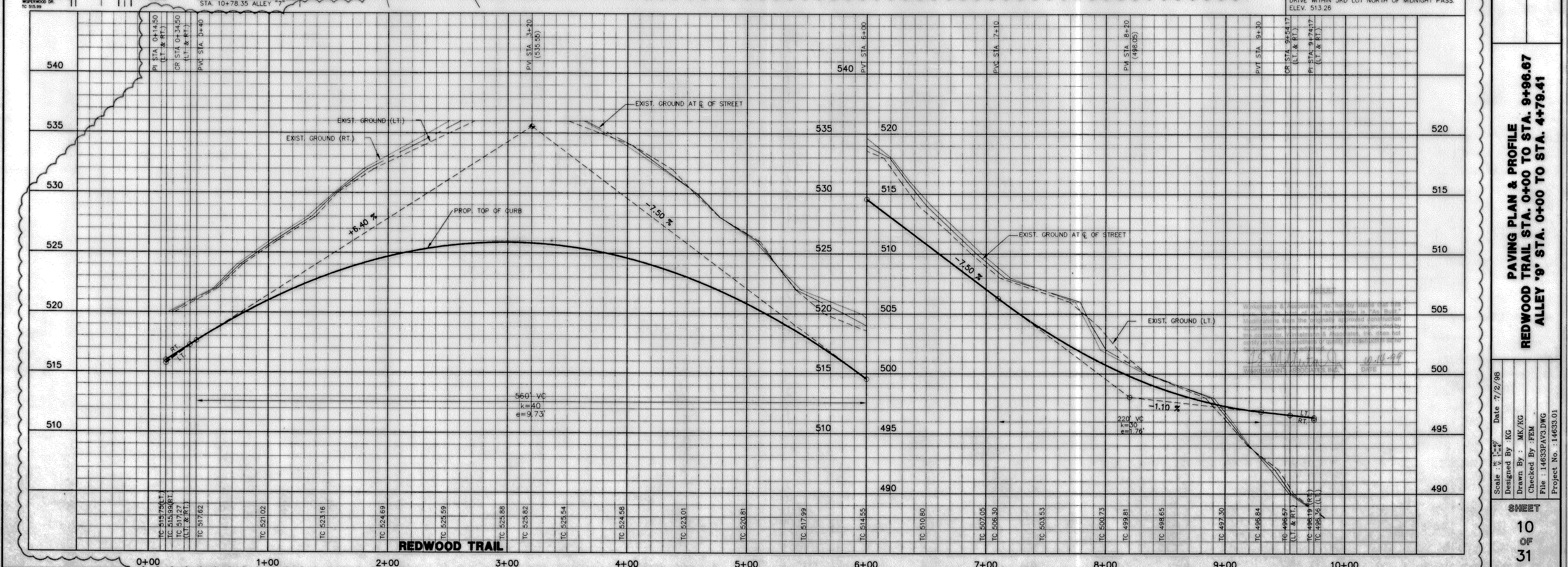
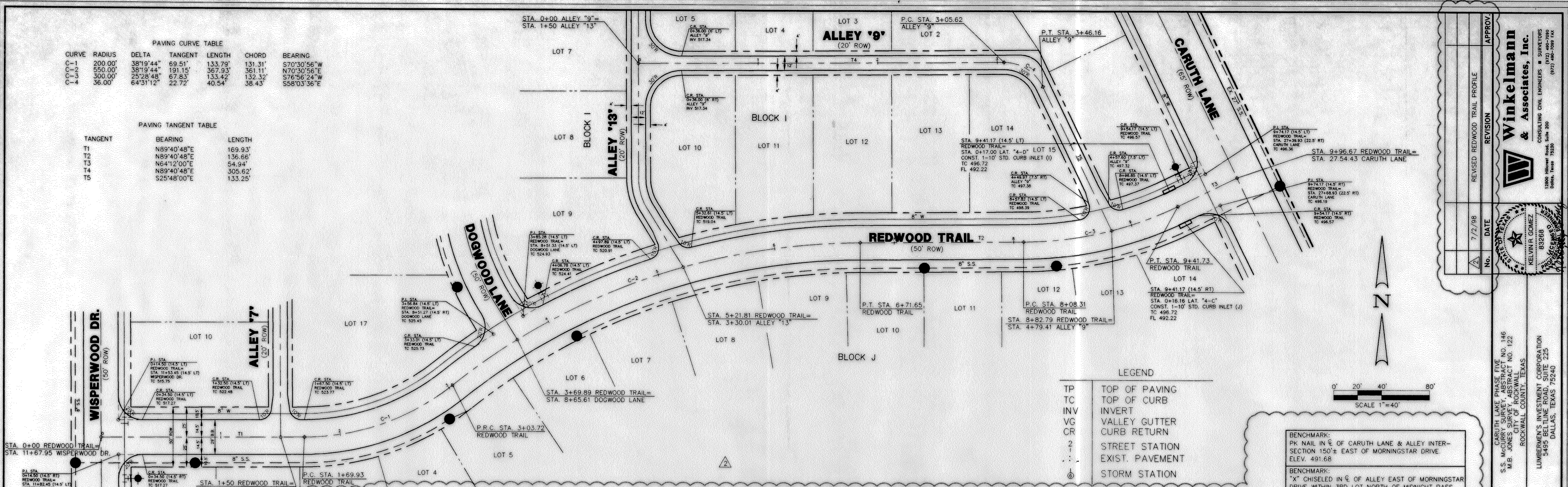


PAVING CURVE TABLE						
CURVE	RADIUS	DELTA	TANGENT	LENGTH	CHORD	BEARING
C-1	200.00'	38°19'44"	69.51'	133.79'	131.31'	S70°30'56"W
C-2	550.00'	38°19'44"	191.15'	367.93'	361.11'	N70°30'56"E
C-3	300.00'	75°23'48"	67.81'	133.42'	133.32'	S76°56'24"W
C-4	36.00'	64°31'12"	22.72'	40.54'	38.43'	S58°03'36"E

PAVING TANGENT TABLE		
TANGENT	BEARING	LENGTH
T1	N89°40'48"E	169.93'
T2	N89°40'48"E	136.66'
T3	N64°12'00"E	54.94'
T4	N89°40'48"E	305.62'
T5	S25°48'00"E	133.25'



Winklemann & Associates, Inc.
CONSULTING CIVIL ENGINEERS & SURVEYORS
13000 Wilshire Blvd. Suite 200
Dallas, Texas 75240
(972) 442-1000 FAX

APPROV. _____
REVISION REDWOOD TRAIL PROFILE

DATE 7/2/98

NO. _____

CARUTH LAKE PHASE FIVE NO. 145
S.S. McCURRY SURVEY ABSTRACT NO. 122
CITY OF ROCKWALL
ROCKWALL COUNTY, TEXAS

LUMBERMAN'S INVESTMENT CORPORATION
3405 BELLEVUE BLVD. SUITE 205
DALLAS, TEXAS 75240

PAVING PLAN & PROFILE
REDWOOD TRAIL STA. 0+00 TO STA. 9+96.67
ALLEY '9' STA. 0+00 TO STA. 4+79.41

Scale: 1"=40'
Designed By: KG
Drawn By: MK/KG
Checked By: PEM
File: 14633PAV3.DWG
Project No.: 14633.01

Date: 7/2/98

10
31