

LUMBERMEN'S INVESTMENT CORPORATION

STORM SEWER CURVE DATA

CURVE	RADIUS	DELTA	TANGENT	LENGTH	BEARING	CHORD
CV-1	55.00'	90°00'00"	55.00'	96.39'	N70°48'00"W	77.78'
CV-2	65.00'	88°25'18"	63.23'	100.31'	S70°00'30"E	90.65'
CV-3	300.00'	10°42'46"	28.13'	56.09'	S71°08'05"W	56.01'
CV-4	55.00'	84°00'11"	31.52'	51.31'	N34°29'23"E	46.84'
CV-5	55.00'	60°17'26"	31.94'	57.87'	N04°20'43"E	55.24'
CV-6	50.00'	90°00'00"	50.00'	78.54'	S19°12'00"W	70.71'
CV-7	65.00'	25°28'48"	14.70'	28.91'	S76°56'24"W	28.67'
CV-8	50.00'	90°00'00"	50.00'	78.54'	N44°40'48"E	70.71'
CV-9	35.00'	54°08'48"	17.89'	33.08'	N63°14'48"W	31.86'

PAVING CURVE DATA

CURVE	RADIUS	DELTA	TANGENT	LENGTH	BEARING	CHORD
C-1	300.00'	24°12'08"	64.32'	126.72'	S13°41'56"E	125.78'

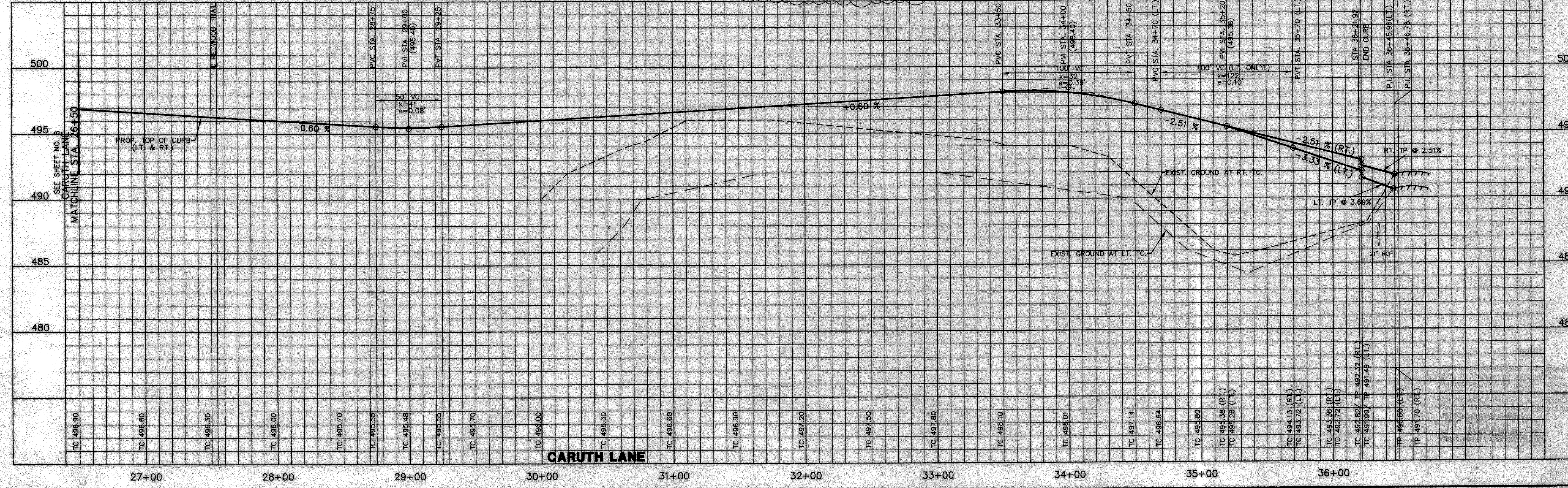
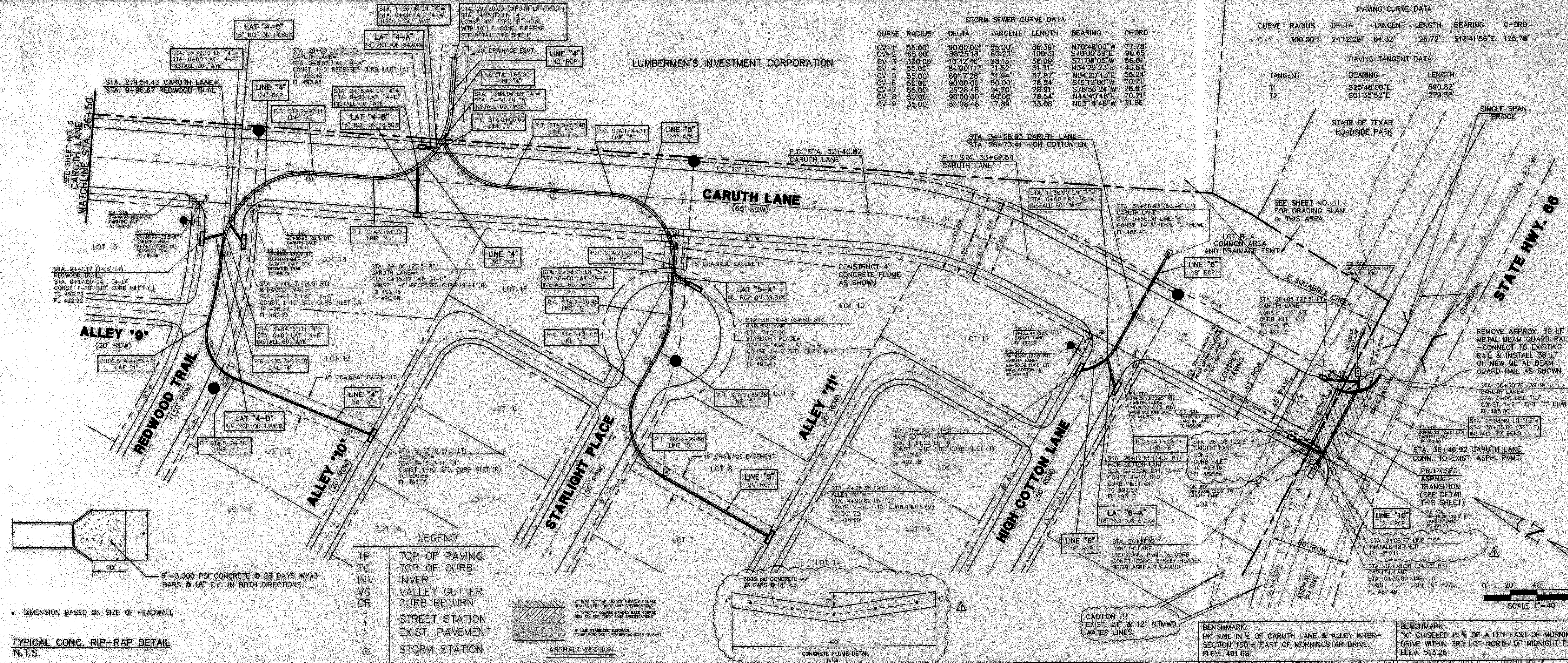
PAVING TANGENT DATA

TANGENT	BEARING	LENGTH
T1	S25°48'00"E	590.82'
T2	S01°35'52"E	279.38'

APPROVALS

No.	DATE	REVISION	APPROV.
6/3/99		ADDED 5' REC. CURB INLET	

Winkelmann & Associates, Inc.
CONSULTING CIVIL ENGINEERS • SURVEYORS
1900 Wilshire Blvd. Suite 200
Dallas, Texas 75205 (972) 442-7000 FAX



PAVING & DRAINAGE PLAN / PAVING PROFILE
CARUTH LANE STA. 26+50 TO STA. 36+46.92

Scale: 1" = 40'
Designed By: RB
Drawn By: MK
Checked By: F.E.M.
File: 14653P333.DWG
Project No.: 14653.01

DATE: 10-4-99

SHEET 7 OF 31