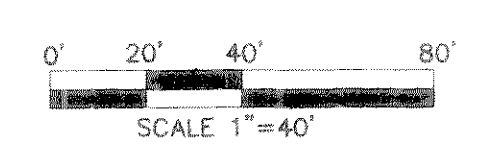
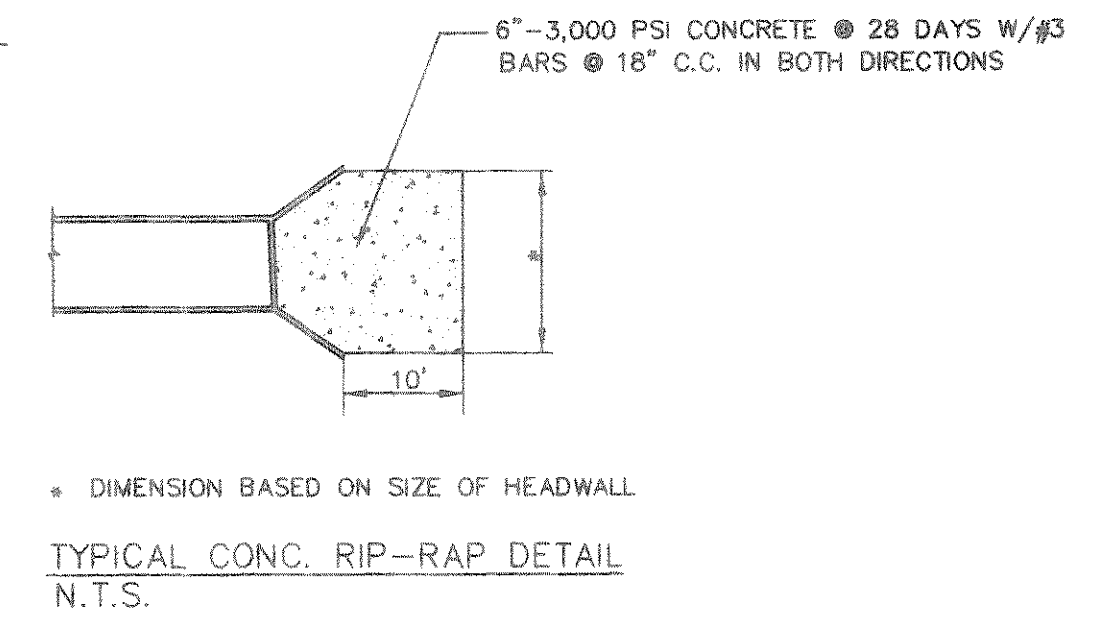


BENCHMARK:
"X" CHISELED IN C OF ALLEY EAST OF MORNINGSTAR DRIVE WITHIN 3RD LOT NORTH OF MIDNIGHT PASS. ELEV. 513.26

BENCHMARK:
PK NAIL IN C OF CARUTH LANE & ALLEY INTERSECTION 150'± EAST OF MORNINGSTAR DRIVE. ELEV. 491.68



STORM SEWER CURVE DATA

CURVE	RADIUS	DELTA	TANGENT	LENGTH
C-1	98.090'	43°46'30"	38.41'	96.683'
C-2	75.000'	60°44'00"	43.944'	78.489'
C-3	70.000'	30°00'00"	70.000'	109.954'
C-4	300.000'	18°40'22"	49.323'	97.769'
C-5	75.000'	40°21'27"	27.863'	52.827'
C-6	45.000'	90°00'00"	45.000'	70.880'
C-7	48.000'	92°54'43"	47.350'	72.970'
C-8	125.000'	37°31'35"	42.260'	81.500'
C-9	60.000'	45°00'00"	24.850'	47.120'
C-10	125.000'	13°51'41"	15.190'	30.24'

APPROVED

REVISION

DATE

No.

Winkelmann & Associates, Inc.
CONSULTING CIVIL ENGINEERS & SURVEYORS
1800 MILBURN ROAD, SUITE 200
DALLAS, TEXAS 75240
(214) 463-7899 FAX

CARUTH LANE PHASE FOUR
S.S. RECORD SURVEY, TRACT NO. 145
U.S. BUREAU OF SURVEY, TRACT NO. 122
CITY OF ROCKWALL, TEXAS
ROCKWALL COUNTY, TEXAS
LUMBERMAN'S INVESTMENT CORPORATION
5845 BELLEVUE ROAD, SUITE 220
DALLAS, TEXAS 75240

**STORM SEWER PLAN
LINE 4, LINE 5, LINE 6
LINE 7 AND LINE 8**

Scale: 1"=40' Date: 1/9/98
Designed By: K.G.
Drawn By: R.B./K.G.
Checked By: F.E.M.
File: 14633\ST5.DWG
Project No.: 14633-0120

ASBULT
Winkelmann & Associates, Inc. hereby states that this plan, to the best of our knowledge is "As Built." Modifications from the originally approved construction documents have been made as per information provided by the contractor. Winkelmann & Associates, Inc. does not certify as to the correctness or quality of construction as no field inspection was performed.
F. E. M.
WINKELMANN & ASSOCIATES, INC. DATE: 1-30-98