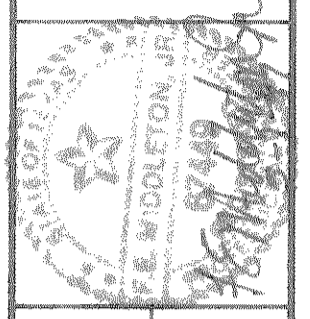
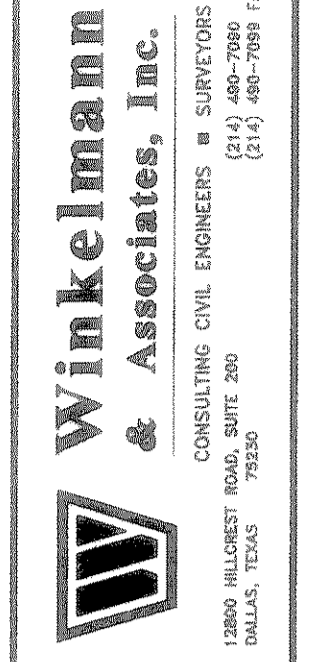
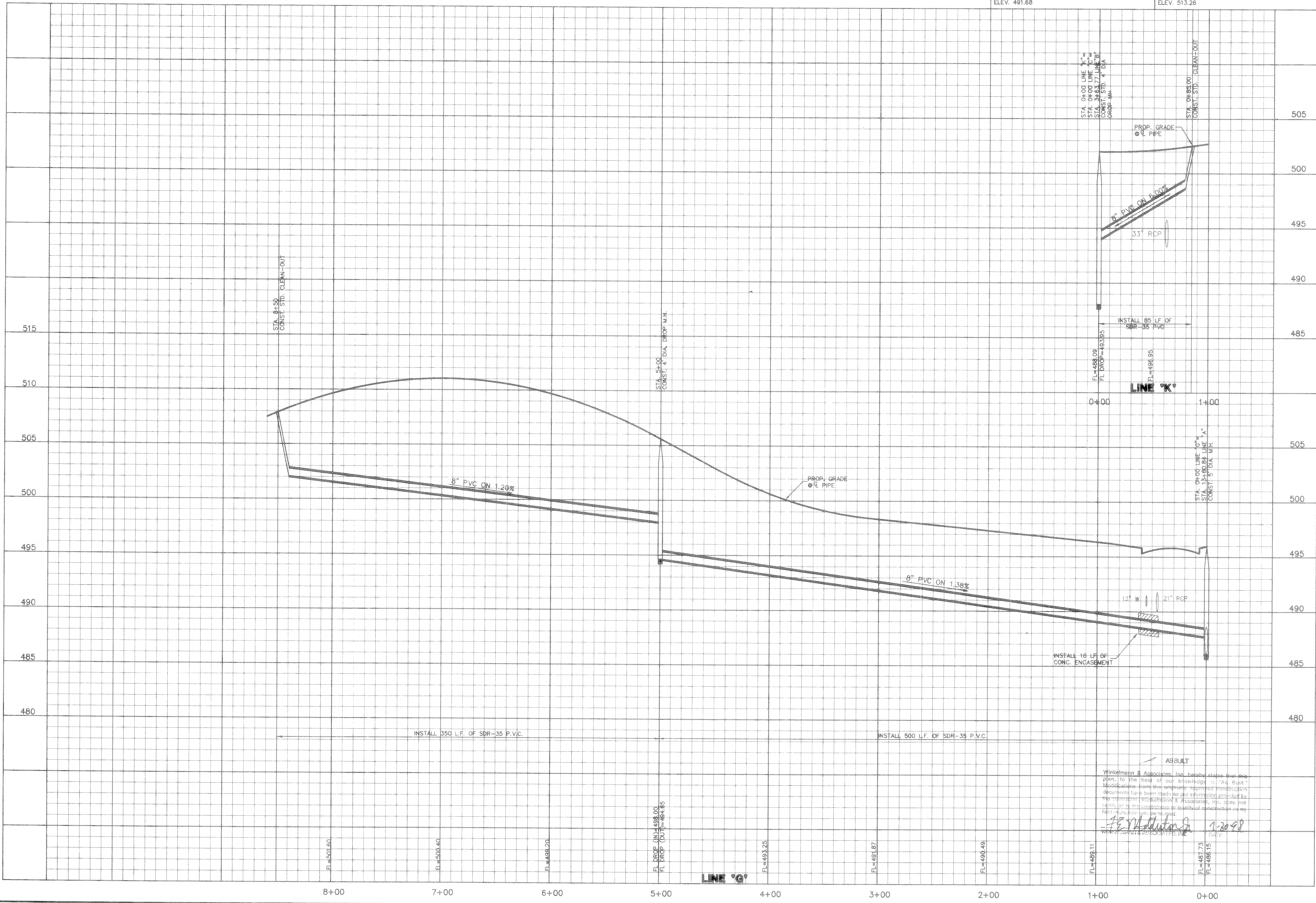


BENCHMARK:
PK NAIL IN ☉ OF CARUTH LANE & ALLEY INTER-
SECTION 150'± EAST OF MORNINGSTAR DRIVE.
ELEV. 491.68

BENCHMARK:
"X" CHISELED IN ☉ OF ALLEY EAST OF MORNINGSTAR
DRIVE WITHIN 3RD LOT NORTH OF MIDNIGHT PASS.
ELEV. 513.26



CARUTH LAKE PHASE FOUR
S.S. McCURRY SURVEY, ABSTRACT NO. 146
M.B. JONES, COUNTY CLERK
ROCKWALL COUNTY, TEXAS
LUMBERWELLS INVESTMENT CORPORATION
5465 W. CAMPBELL ROAD
DALLAS, TEXAS 75240

**SANITARY SEWER PROFILES
LINE 'G' & LINE 'K'**

Scale: 1" = 10' V.
Date: 5-9-97
Designed By: R.B.
Drawn By: MK
Checked By: F.E.M.
File: 146335SD.DWG
Project No.: 14633.01

Winkelmann & Associates, Inc. hereby states that this plan, to the best of our knowledge is "As Built".
Modifications from the original approved preliminary documents have been made as per information provided by the contractor, Winkelmann & Associates, Inc. does not warrant the accuracy or quality of construction as no field inspection was performed.
F.E.M. 7/20/98
DATE