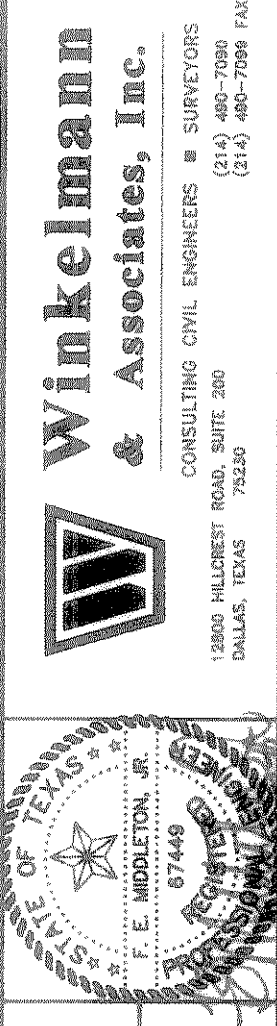
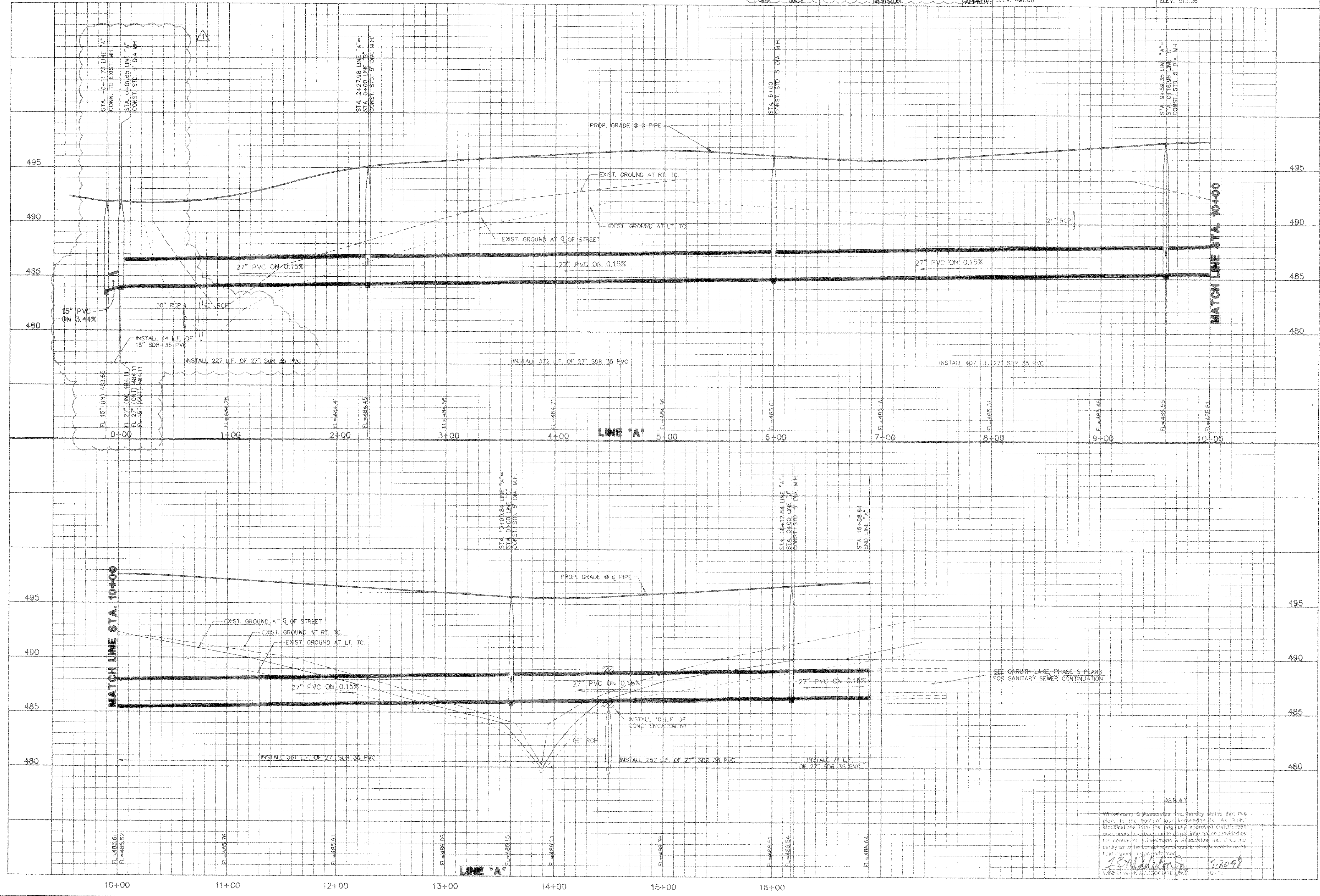


No.	DATE	REVISION	APPROV.
1	7/25/97	ADDED SAN. SEWER MANHOLE & 15" LINE	

BENCHMARK:  
PK NAIL IN C OF CARUTH LANE & ALLEY INTER-SECTION 150± EAST OF MORNINGSTAR DRIVE WITHIN 3RD LOT NORTH OF MIDNIGHT PASS. ELEV. 491.68

BENCHMARK:  
"X" CHISELED IN C OF ALLEY EAST OF MORNINGSTAR DRIVE WITHIN 3RD LOT NORTH OF MIDNIGHT PASS. ELEV. 513.26



CARUTH LAKE PHASE FOUR  
S.S. MCGURRY SURVEY, ABSTRACT NO. 146  
M.B. JONES SURVEY, ABSTRACT NO. 122  
ROCKWALL COUNTY, TEXAS  
LUMBERMEN'S INVESTMENT CORPORATION  
5495 BELTLINE ROAD, SUITE 225  
DALLAS, TEXAS 75240

**SANITARY SEWER PROFILES**  
**LINE 'A'**

Scale: 1" = 10'  
 Date: 7/25/97  
 Designed By: R.B./KG  
 Drawn By: MK/KG  
 Checked By: F.E.M.  
 File: 14633461.DWG  
 Project No.: 14633.01

AS BUILT  
 Winkelman & Associates, Inc. hereby states that this plan, to the best of our knowledge is "As Built."  
 Modifications from the originally approved construction documents have been made as per information provided by the contractor Winkelman & Associates, Inc. and does not carry any time component or quality of construction as the best engineering has performed.  
 Winkelman & Associates, Inc. 7-20-98  
 GTE