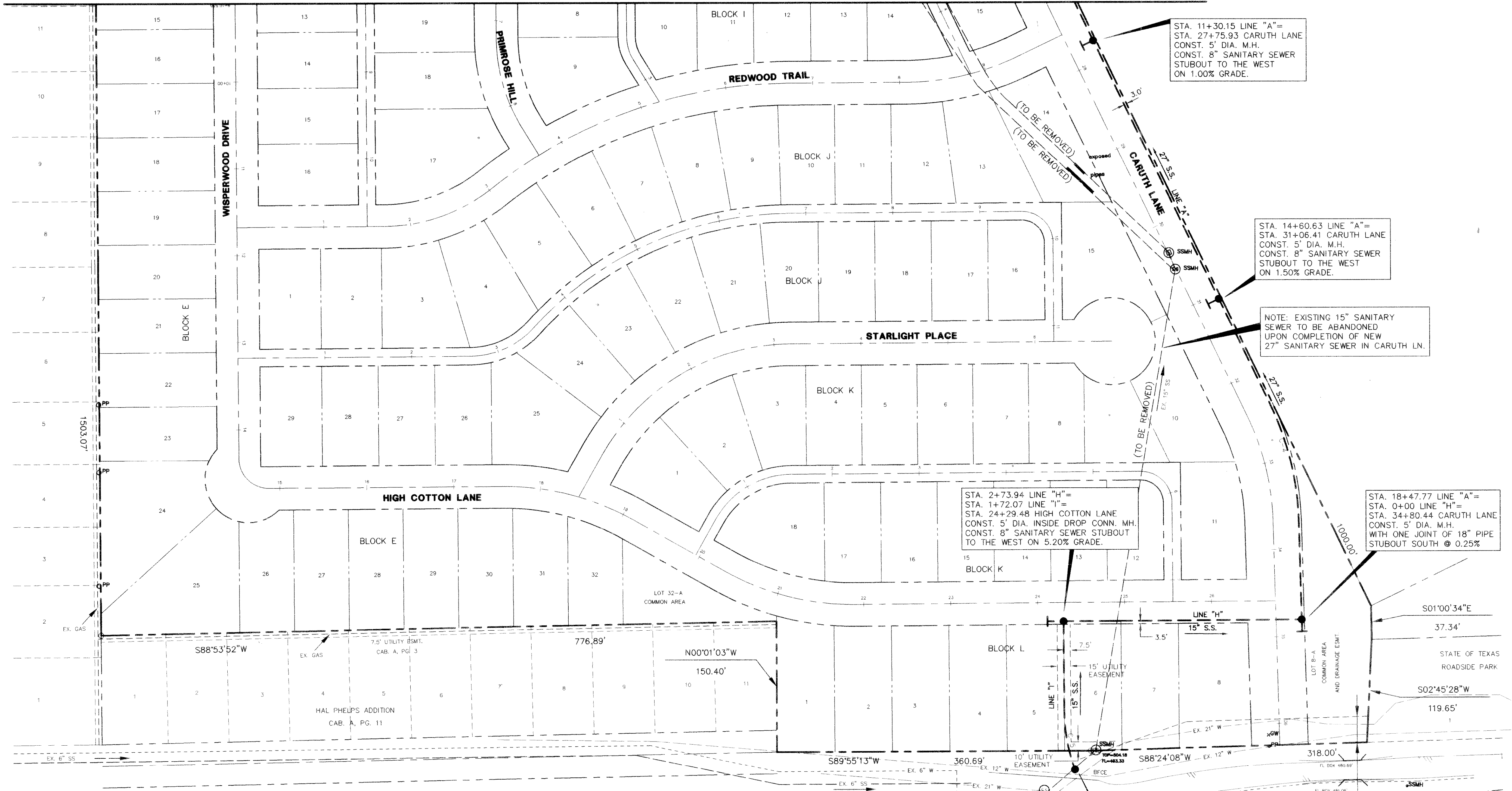


CARUTH LAKE PHASE FIVE  
 M.B. JONES SUBDIVISION, TRACT NO. 122  
 ROCKWALL, COUNTY, TEXAS  
 LUMBERMEN'S INVESTMENT CORPORATION  
 5485 BELTLINE ROAD, SUITE 225  
 DALLAS, TEXAS 75240

**27" SANITARY SEWER PLAN**

Scale: 1" = 60'  
 Date: 5/12/97  
 Designed By: R.B./K.G.  
 Drawn By: R.B./K.G.  
 Checked By: F.E.M.  
 File: I4633M2.DWG  
 Project No.: I4633.01

MATCH LINE



STA. 11+30.15 LINE "A"=  
 STA. 27+75.93 CARUTH LANE  
 CONST. 5' DIA. M.H.  
 CONST. 8" SANITARY SEWER  
 STUBOUT TO THE WEST  
 ON 1.00% GRADE.

STA. 14+60.63 LINE "A"=  
 STA. 31+06.41 CARUTH LANE  
 CONST. 5' DIA. M.H.  
 CONST. 8" SANITARY SEWER  
 STUBOUT TO THE WEST  
 ON 1.50% GRADE.

NOTE: EXISTING 15" SANITARY  
 SEWER TO BE ABANDONED  
 UPON COMPLETION OF NEW  
 27" SANITARY SEWER IN CARUTH LN.

STA. 2+73.94 LINE "H"=  
 STA. 1+72.07 LINE "I"=  
 STA. 24+29.48 HIGH COTTON LANE  
 CONST. 5' DIA. INSIDE DROP CONN. MH.  
 CONST. 8" SANITARY SEWER STUBOUT  
 TO THE WEST ON 5.20% GRADE.

STA. 18+47.77 LINE "A"=  
 STA. 0+00 LINE "H"=  
 STA. 34+80.44 CARUTH LANE  
 CONST. 5' DIA. M.H.  
 WITH ONE JOINT OF 18" PIPE  
 STUBOUT SOUTH @ 0.25%

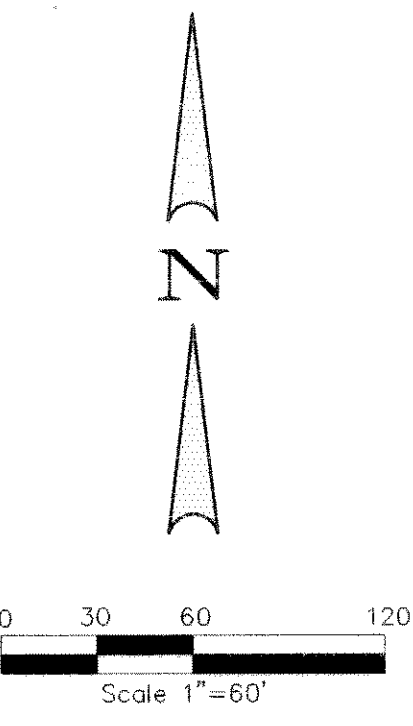
STA. 0+00 LINE "I"  
 CONST. STD. 5' DIA. M.H.  
 OVER EX. 15" SAN. SEWER

CONTRACTOR TO FIELD VERIFY  
 LOCATION OF EX. 15" SEWER  
 PRIOR TO CONSTRUCTION

SANITARY SEWER CURVE DATA

CURVE NO.	RADIUS	DELTA	TANGENT	LENGTH	CHORD	BEARING
C-4	329.50'	24°12'08"	70.65'	139.18'	138.15'	S13°41'56"E
C-5	200.00'	19°41'25"	34.71'	68.73'	68.39'	N10°09'54"W

NOTE:  
 1. SANITARY SEWER LOCATED 7' BACK OF CURB.



S.H. 66  
 ASBULT  
 Winkelman & Associates, Inc. hereby states that this plan, to the best of our knowledge is "As Built," modifications from the originally approved construction documents have been made as per information provided by the contractor, Winkelman & Associates, Inc. does not warrant the correctness of quality of construction, as per the contractor's responsibility.  
 JEM  
 WINKELMANN & ASSOCIATES, INC.  
 8-21-98  
 GATE

NOTE:  
 THE CONTRACTOR SHALL CONTACT MR. JOE STANKIEWICZ,  
 ENGINEERING OFFICER, AT (214) 442-5405 AT LEAST 48 HOURS  
 PRIOR TO PERFORMING ANY WORK IN THE VICINITY OF  
 NORTH TEXAS MUNICIPAL WATER DISTRICT FACILITIES.