

GENERAL NOTES:

1. ALL PROPOSED ALLEY RIGHT-OF WAYS ARE A 20' DEDICATION.
2. ALL PROPOSED STREET RIGHT-OF WAYS ARE A 50' DEDICATION EXCEPT FOR CARUTH LANE.
3. ALL HOME BUILDERS WILL BE REQUIRED TO PLANT 3-3" CALIPER TREES PER HOME SITE. LOCATION OF TREES TO BE DETERMINED BY HOMEBUILDER.
4. FOR PROPOSED UTILITY EASEMENTS REFERENCE THE FINAL PLAT.
5. FOR PROPOSED UTILITIES REFERENCE THE WATER, SANITARY AND STORM PLANS.
6. ALL BUILDING PADS SHOWN ARE 50' X 65' TYPICAL.
7. FOR PROPOSED GRADING REFERENCE LOT GRADING PLANS.
8. REFER TO PLANS BY CARTER BURGESS FOR HARDSCAPE AND PLANTING FOR CARUTH LAKE, PHASE 4.

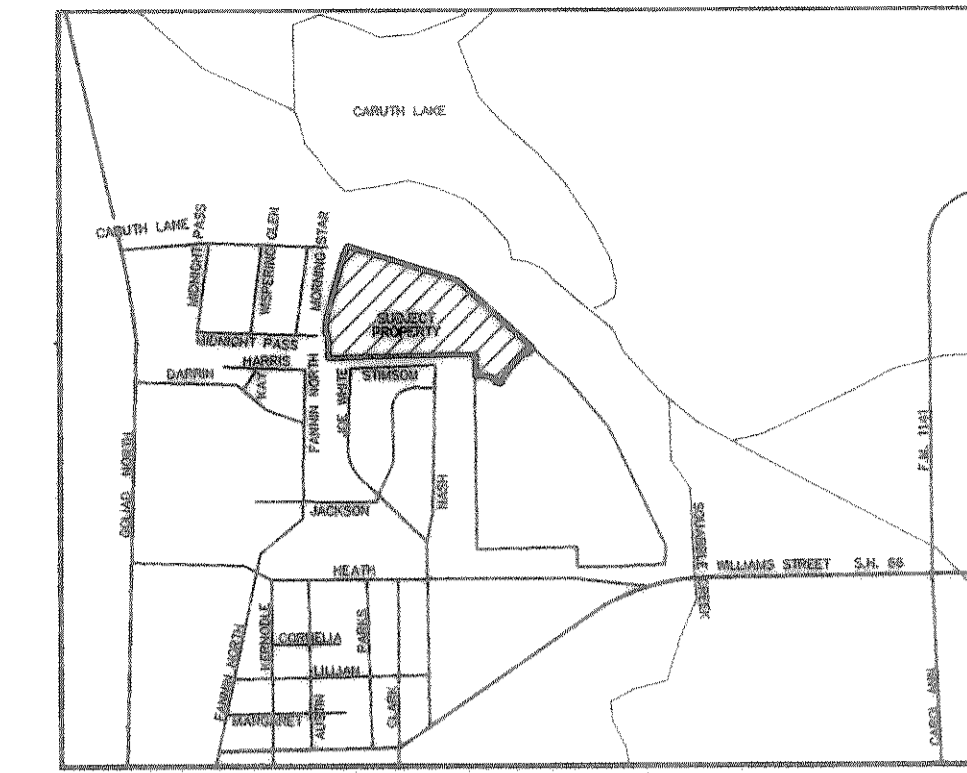
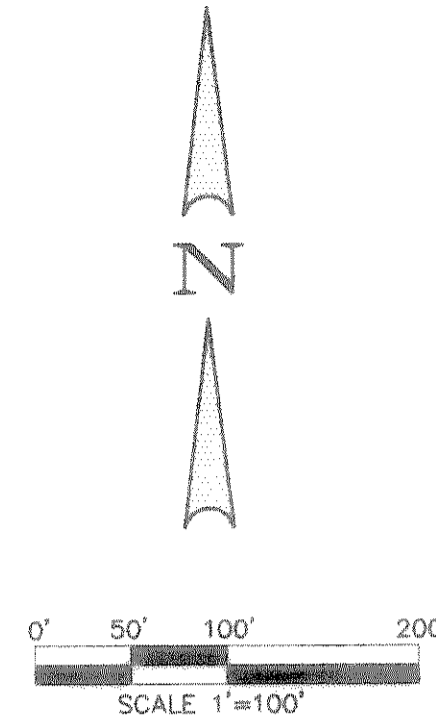
TREE LEGEND

- BD14 ● BD= BOIS D'ARC
- C14 ● C= CEDAR TREE
- COT14 ● COT= COTTONWOOD
- E14 ● E= ELM TREE
- H14 ● H= HACKBERRY
- L14 ● L= LOCUST TREE
- O14 ● OAK= OAK TREE
- P14 ● P= PECAN TREE
- W14 ● W= WILLOW TREE

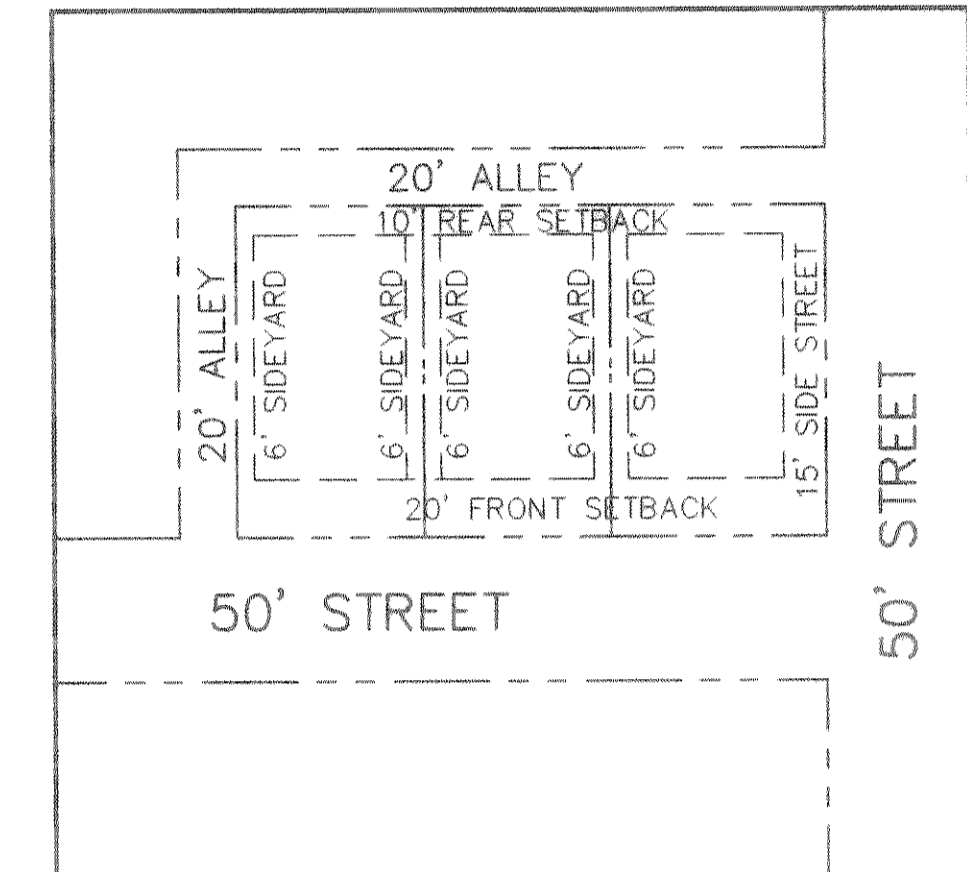
TREE TYPE
TRUNK DIAMETER

TREE SUMMARY

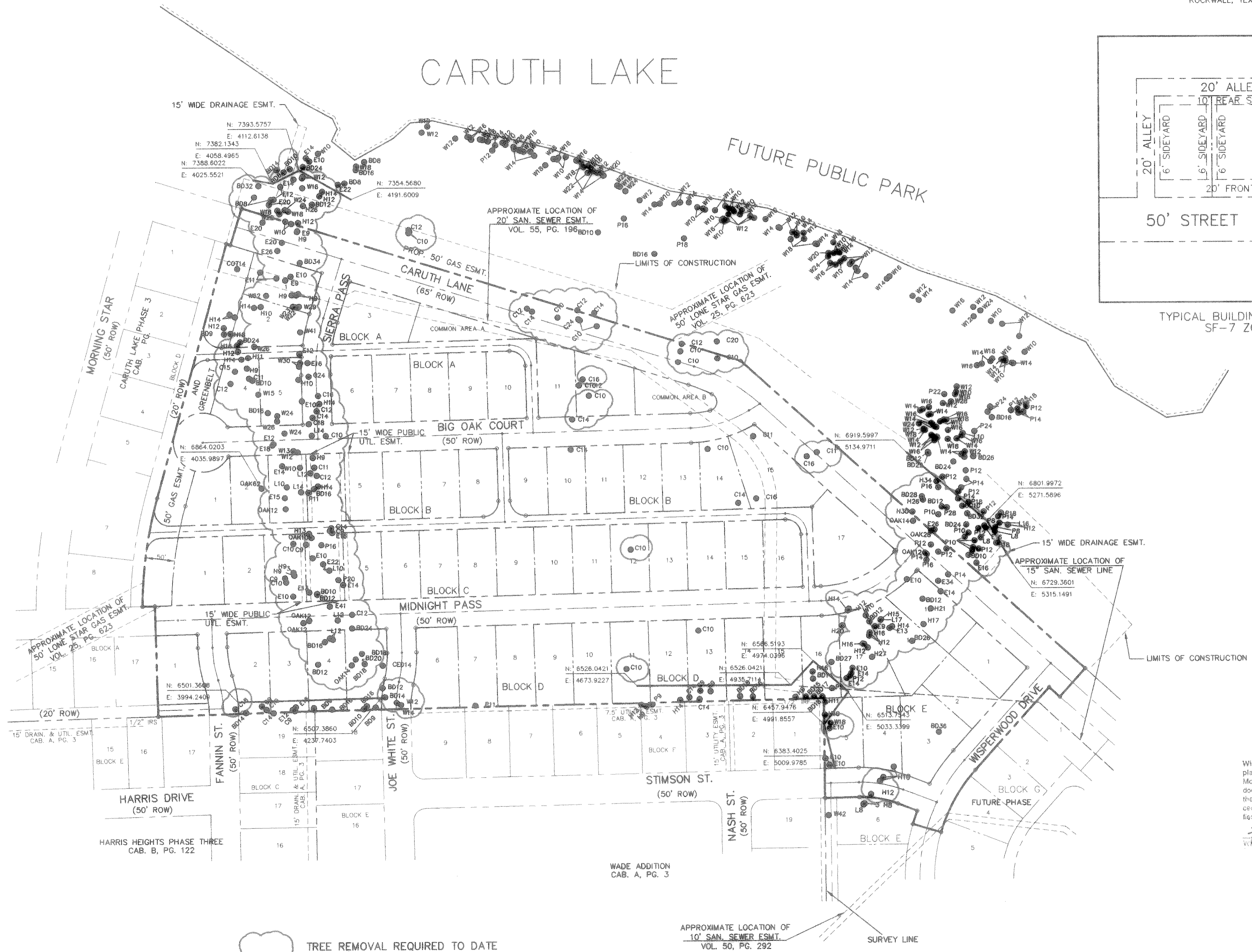
TREE REMOVAL REQUIRED TO DATE (LESS EXEMPTIONS) 1639 INCHES



LOCATION MAP
MAPSCO PAGE 20C
ROCKWALL, TEXAS



TYPICAL BUILDING SETBACKS
SF-7 ZONING



TREE REMOVAL REQUIRED TO DATE

AS BUILT
Winkelmann & Associates, Inc. hereby states that this plan, to the best of our knowledge is "As Built." Modifications from the originally approved construction documents have been made as per information provided by the contractor. Winkelmann & Associates, Inc. does not certify as to the correctness or quality of construction or the location of any existing utilities.
[Signature]
WINKELMANN & ASSOCIATES, INC. DATE 7/30/97

CARUTH LAKE PHASE FOUR NO. 146
S.S. M.B. JONES SURVEY, ABSTRACT NO. 122
CITY OF ROCKWALL
ROCKWALL COUNTY, TEXAS
LUMBERMEN'S INVESTMENT CORP.
5495 BELLEVUE ROAD, SUITE 225
DALLAS, TEXAS 75240

TRESCAPE REMOVAL PLAN
CARUTH LAKE, PHASE 4
21.534 ACRES - 68 LOTS

Scale : 1"=100'	Date : 1/10/97
Designed By : WAI	
Drawn By : T.J.C./K.B.	
Checked By : F.E.M.	
File : 146331.DWG	
Project No. : 146331(20)	

SHEET
28
OF
29

NO.	DATE	REVISION	APPROVAL

Winkelmann & Associates, Inc.
CONSULTING CIVIL ENGINEERS & SURVEYORS
1805 BELLEVUE ROAD, SUITE 200
DALLAS, TEXAS 75240
(214) 497-7900
(214) 497-7900 FAX