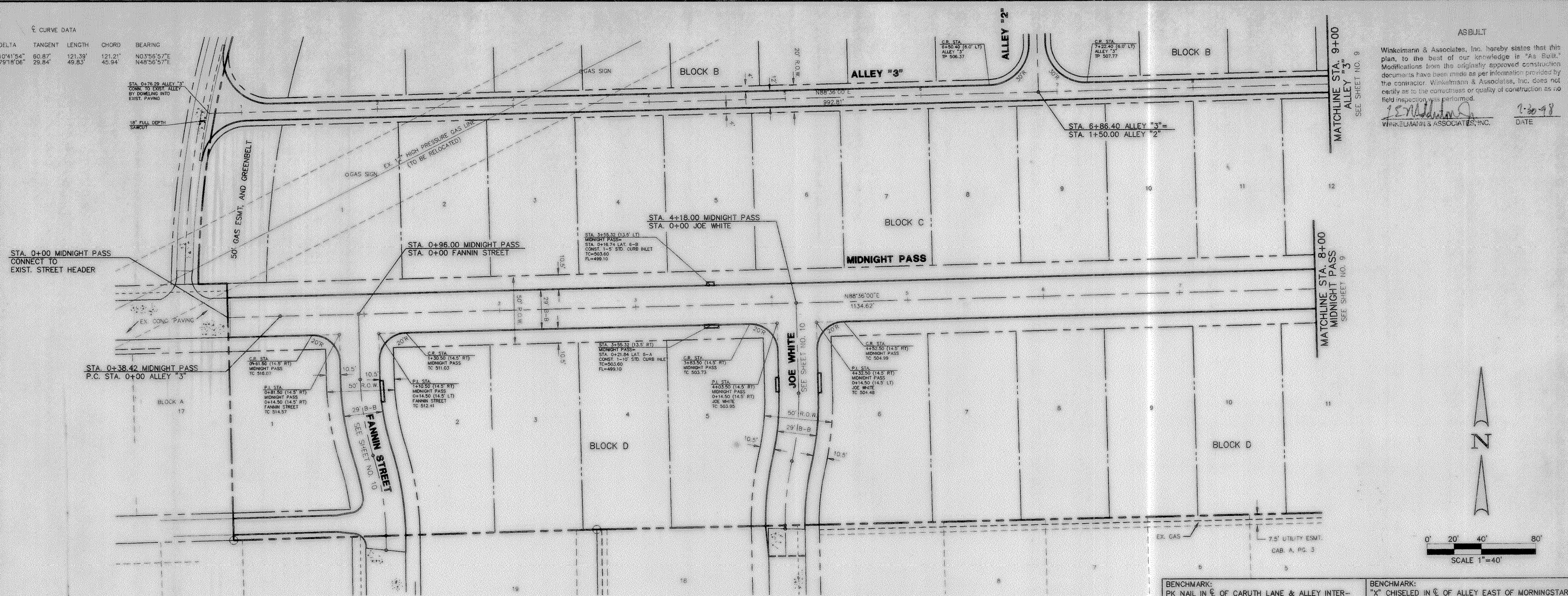
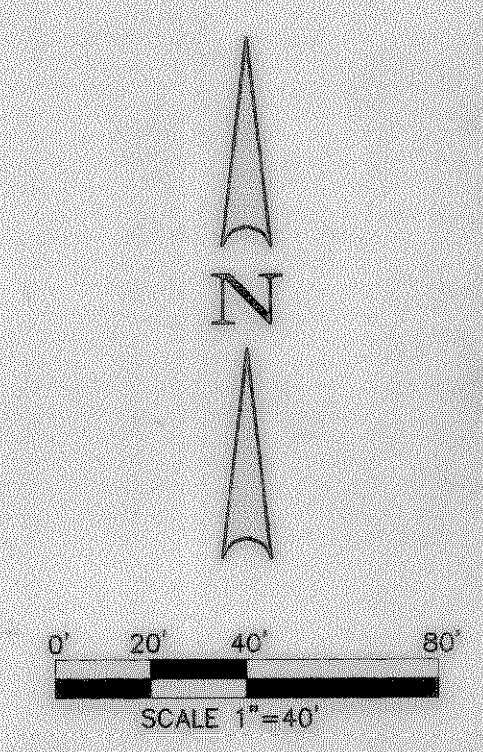


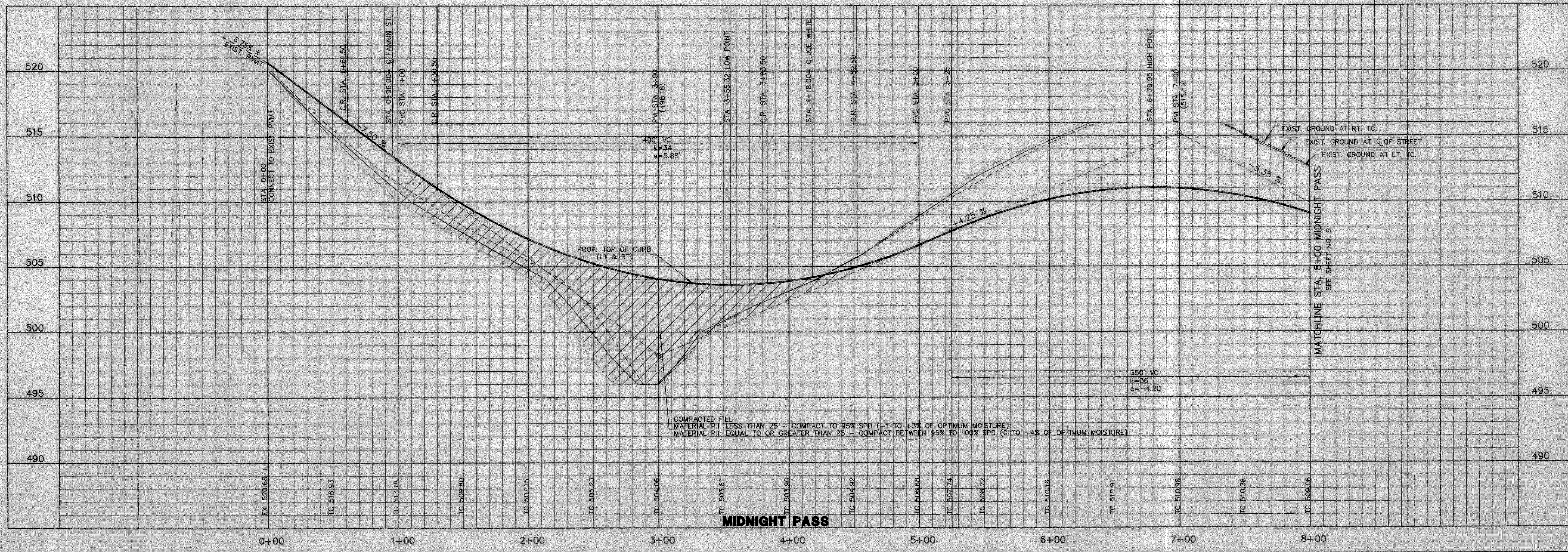
CURVE DATA						
CURVE	RADIUS	DELTA	TANGENT	LENGTH	CHORD	BEARING
C-1	550.10'	10°41'54"	60.87'	121.39'	121.21'	N03°55'57"E
C-2	36.00'	79°18'04"	29.84'	45.83'	45.94'	N48°55'57"E



ASBUILT
 Winkelman & Associates, Inc. hereby states that this plan, to the best of our knowledge is "As Built". Modifications from the originally approved construction documents have been made as per information provided by the contractor. Winkelman & Associates, Inc. does not certify as to the correctness or quality of construction as no field inspection was performed.
 Winkelman & Associates, Inc. DATE 2-20-98



BENCHMARK: PK NAIL IN C. OF CARUTH LANE & ALLEY INTERSECTION 150'± EAST OF MORNINGSTAR DRIVE. ELEV. 491.68
 BENCHMARK: "X" CHISELED IN C. OF ALLEY EAST OF MORNINGSTAR DRIVE WITHIN 3RD LOT NORTH OF MIDNIGHT PASS. ELEV. 513.26



COMPACTED FILL
 MATERIAL P.I. LESS THAN 25 - COMPACT TO 95% SPD (-1 TO +3% OF OPTIMUM MOISTURE)
 MATERIAL P.I. EQUAL TO OR GREATER THAN 25 - COMPACT BETWEEN 95% TO 100% SPD (0 TO +4% OF OPTIMUM MOISTURE)

Winkelman & Associates, Inc.
 CONSULTING CIVIL ENGINEERS & SURVEYORS
 1300 Walnut Road, Suite 200
 Dallas, Texas 75247
 (214) 442-7000 FAX



CARUTH LAKE PHASE FOUR
 S.S. McCurry SURVEY ABSTRACT NO. 146
 M.B. JOHNSON CITY OF ROCKWALL, TEXAS
 ROCKWALL COUNTY, TEXAS
 LUMBERMEN'S INVESTMENT CORPORATION
 3499 W. LBJ Fwy. Suite 225
 DALLAS, TEXAS 75240

PAVING PLAN & PROFILE
MIDNIGHT PASS STA. 0+00 TO STA. 8+00
ALLEY '3' STA. 0+79.29 TO STA. 9+00

Scale: 1"=40' Date: 5-9-97
 Designed By: RB
 Drawn By: MK
 Checked By: J.E.M.
 File: 14633P45DWG
 Project No.: 14633.01(20)