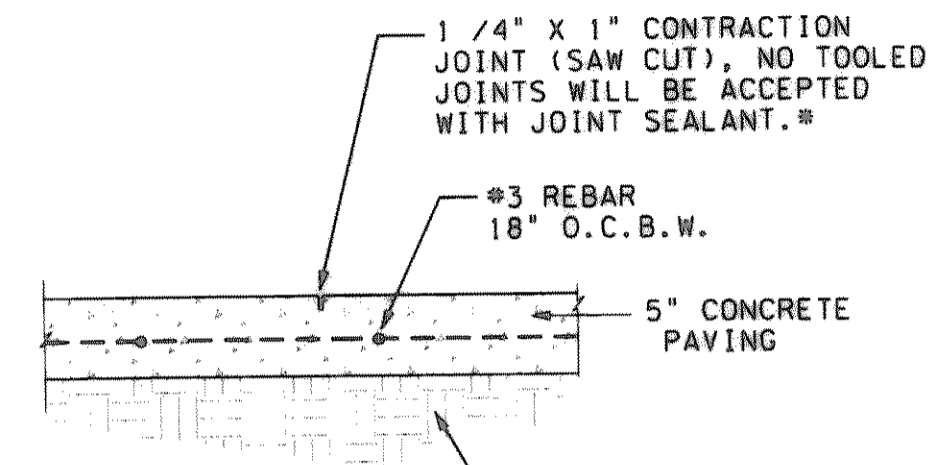


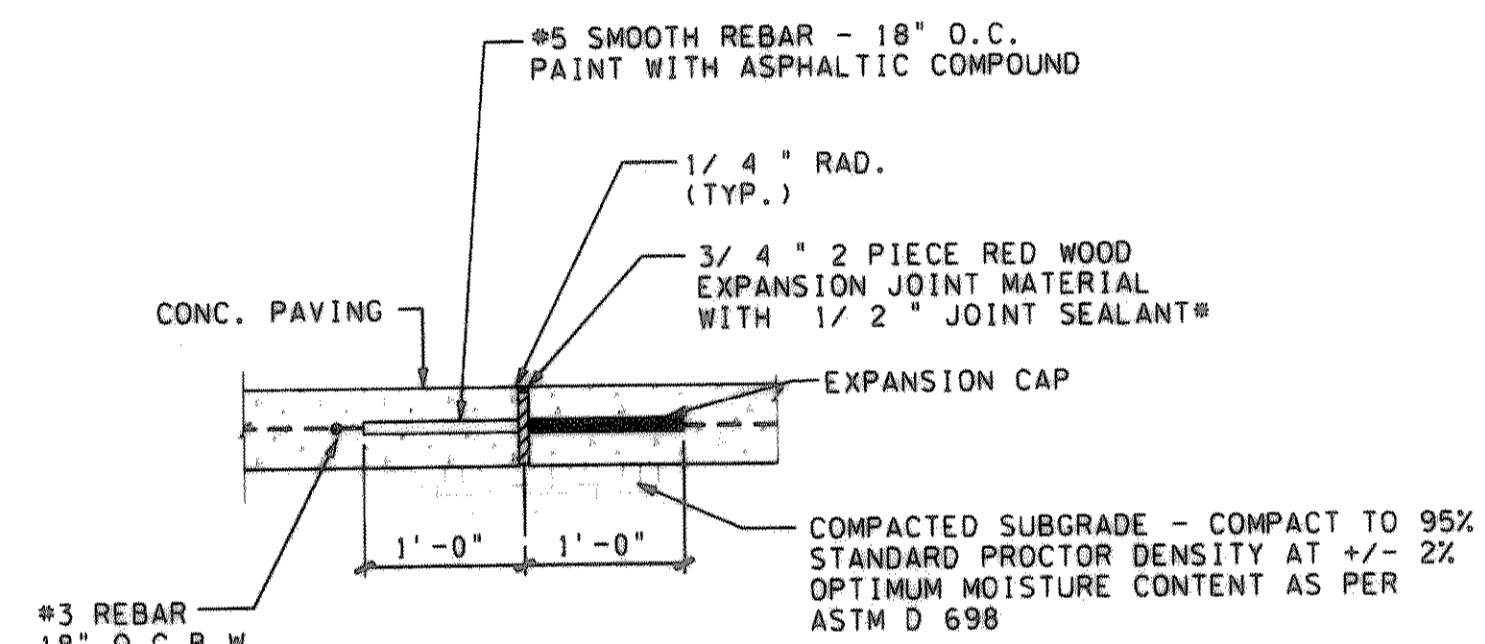
SHORT SITE COLUMN DETAIL

1" = 1'-0"



COMPACTED SUBGRADE - COMPACT TO 95% STANDARD PROCTOR DENSITY AT +/- 2% OPTIMUM MOISTURE CONTENT AS PER ASTM D 698

CONTRACTION JOINT



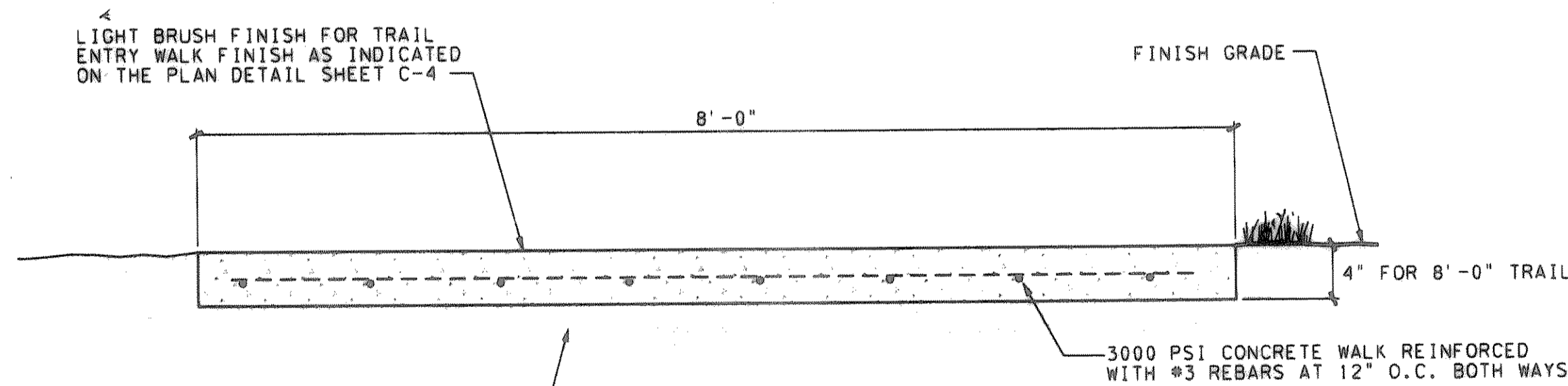
NOTE: EXPANSION JOINTS SHALL BE SPACED 60' O.C. UNLESS OTHERWISE NOTED ON DRAWINGS

EXPANSION JOINT

* CONTRACTOR TO SUBMIT JOINT SEALANT COLORS TO OWNER FOR APPROVAL.

CONTRACTION & EXPANSION JOINTS

1" = 1' - 0"

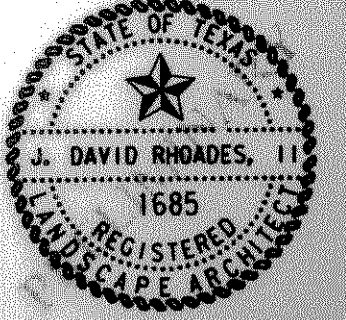


COMPACTED SUBGRADE - COMPACT TO 95% STANDARD PROCTOR DENSITY AT +/- 2% OPTIMUM MOISTURE CONTENT AS PER ASTM D 698

REFER TO CITY OF ROCKWALL STANDARDS

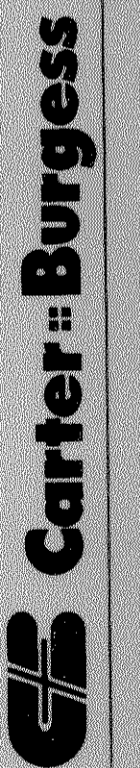
TRAIL DETAIL

N.T.S.



CARUTH LAKES PHASE 5 - ROCKWALL, TEXAS

LUMBERMEN'S INVESTMENT, INC.
5495 BELTLINE RD., SUITE 225
DALLAS, TX 75240



7500 ELMBROOK DRIVE SUITE 200 DALLAS, TEXAS 75247 - 4951
(214) 638 0045 FAX (214) 638 0447

REVISIONS

JOB NUMBER
962287010

DESIGNED **JDR**
DRAWN **JRK**
CHECKED **JDR**

ISSUE DATE
April 1, 1997

SHEET NUMBER
D-1

COLUMN AND TRAIL DETAILS