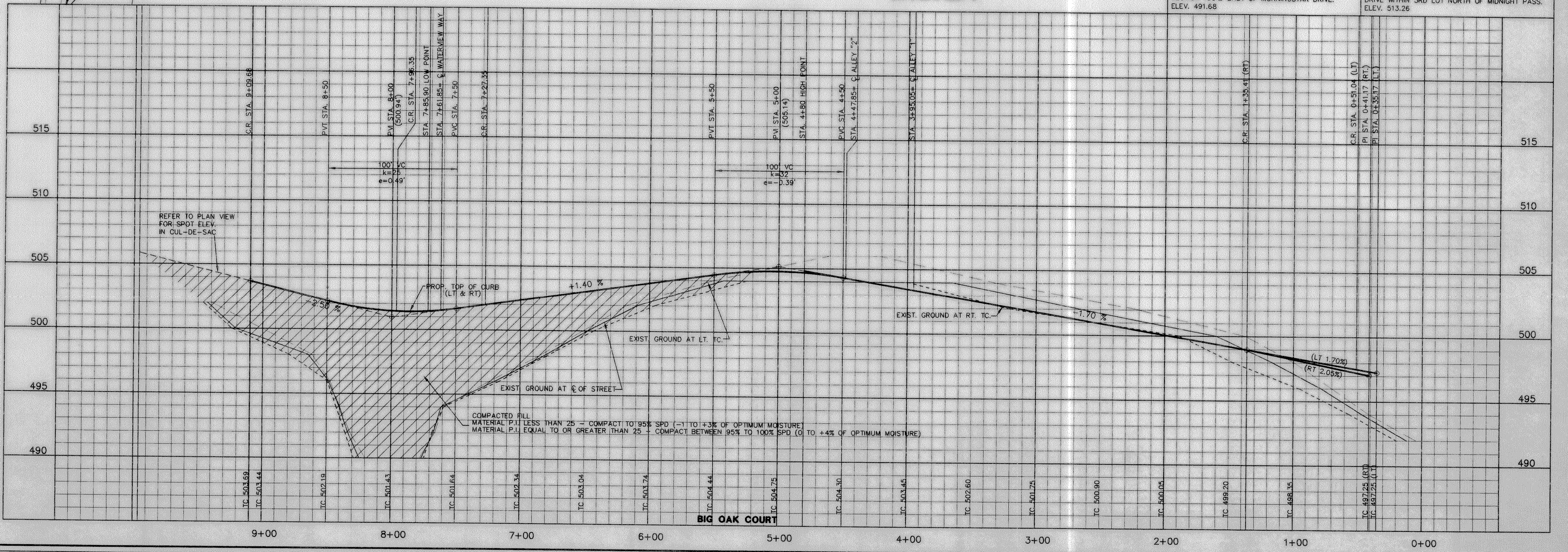
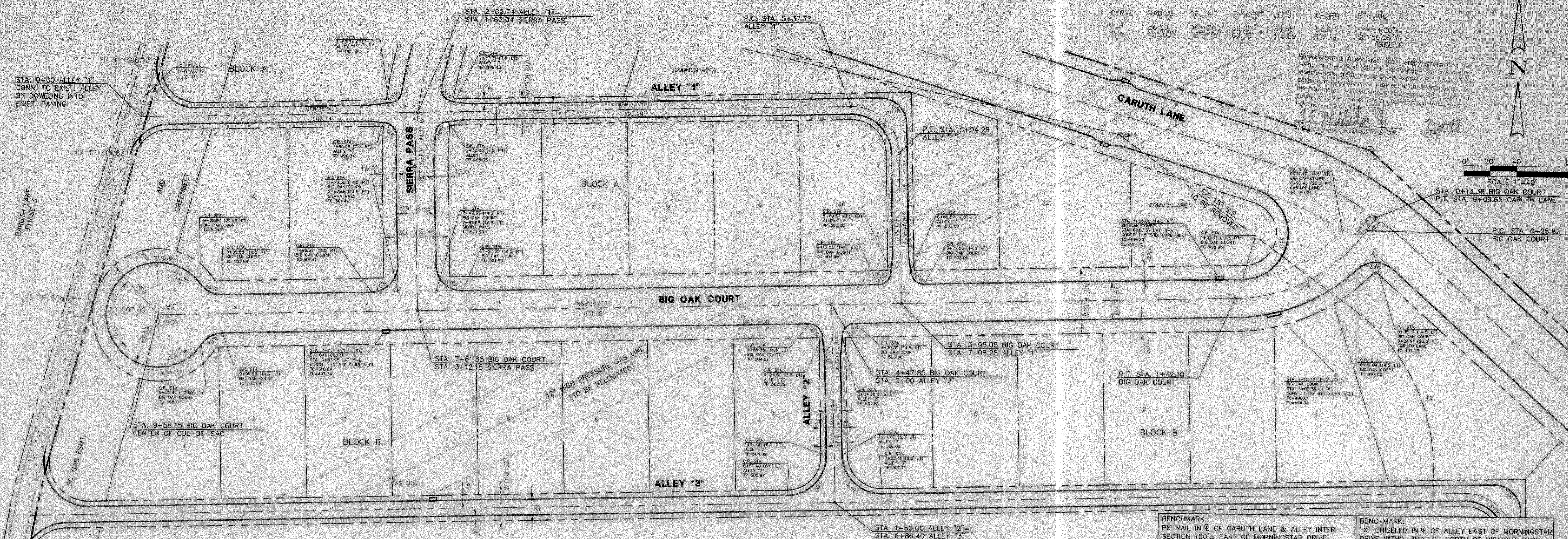
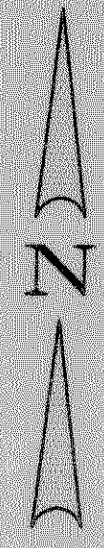


CURVE	RADIUS	DELTA	TANGENT	LENGTH	CHORD	BEARING
C-1	36.00'	90°00'00"	36.00'	56.55'	50.91'	S46°24'00"E
C-2	125.00'	53°18'04"	62.73'	116.29'	112.14'	S61°56'33"W

Winkelmann & Associates, Inc. hereby states that this plan, to the best of our knowledge is "As-Built." Modifications from the original approved construction documents have been made as per information provided by the contractor, Winkelmann & Associates, Inc. does not hold responsibility for the correctness or quality of construction or any field inspection made by the contractor.

J.E. Winkelmann
 J.E. WINKELMANN & ASSOCIATES, INC.
 DATE: 7-20-98

SCALE 1"=40'
 STA. 0+13.38 BIG OAK COURT
 P.T. STA. 9+09.65 CARUTH LANE
 P.C. STA. 0+25.82
 BIG OAK COURT



BENCHMARK: PK NAIL IN E OF CARUTH LANE & ALLEY INTERSECTION 150' ± EAST OF MORNINGSTAR DRIVE. ELEV. 491.68
 BENCHMARK: "X" CHISELED IN C OF ALLEY EAST OF MORNINGSTAR DRIVE WITHIN 3RD LOT NORTH OF MIDNIGHT PASS. ELEV. 513.26

PAVING PLAN & PROFILE
BIG OAK COURT
STA. 0+13.38 TO STA. 9+09.65
ALLEY "1" STA. 0+00 TO STA. 7+08.28
ALLEY "2" STA. 0+00 TO STA. 1+50.00

Scale: 1"=40'
 Date: 5-9-97
 Designed By: RB
 Drawn By: MK
 Checked By: P.E.M.
 File: 14633P4.DWG
 Project No.: 14633.01(20)

SHEET
7
OF
29

Winkelmann & Associates, Inc.
 CONSULTING CIVIL ENGINEERS • SURVEYORS
 12000 Hillwood Road, Suite 200
 Dallas, Texas 75240
 (214) 460-7000 FAX

CARUTH LAKE PHASE FOUR
 S.S. MCCOY SURVEY, ABSTRACT NO. 146
 M.B. JONES SURVEY, ABSTRACT NO. 122
 CITY OF ROCKWALL
 ROCKWALL COUNTY, TEXAS
 LUMBERMEN'S INVESTMENT CORPORATION
 5995 DALLAS, TEXAS 75240