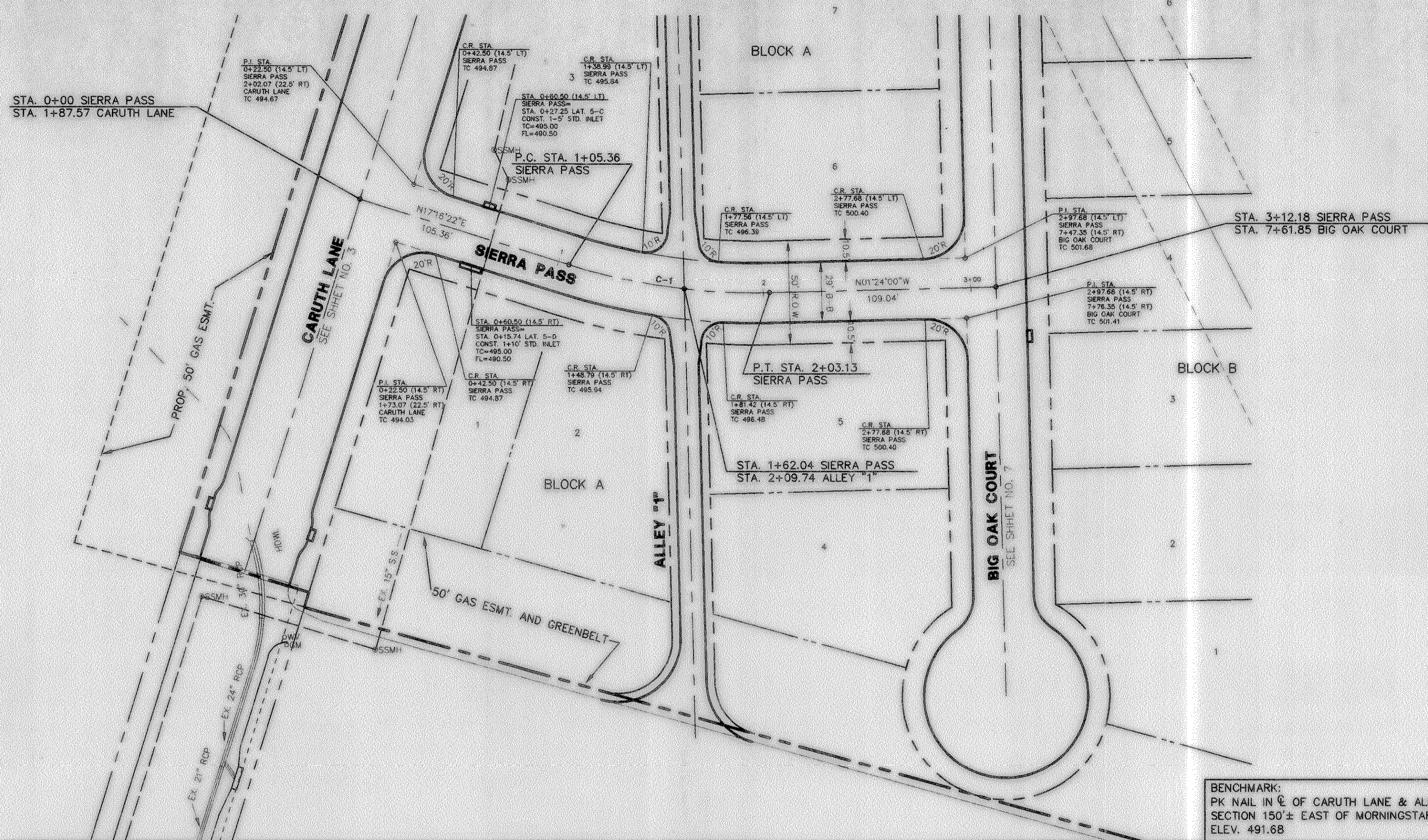
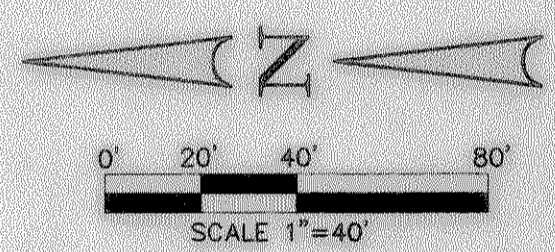


CURVE DATA						
CURVE	RADIUS	DELTA	TANGENT	LENGTH	CHORD	BEARING
C-1	300.00'	18°40'22"	49.32'	97.77'	97.34'	N07°56'11"E

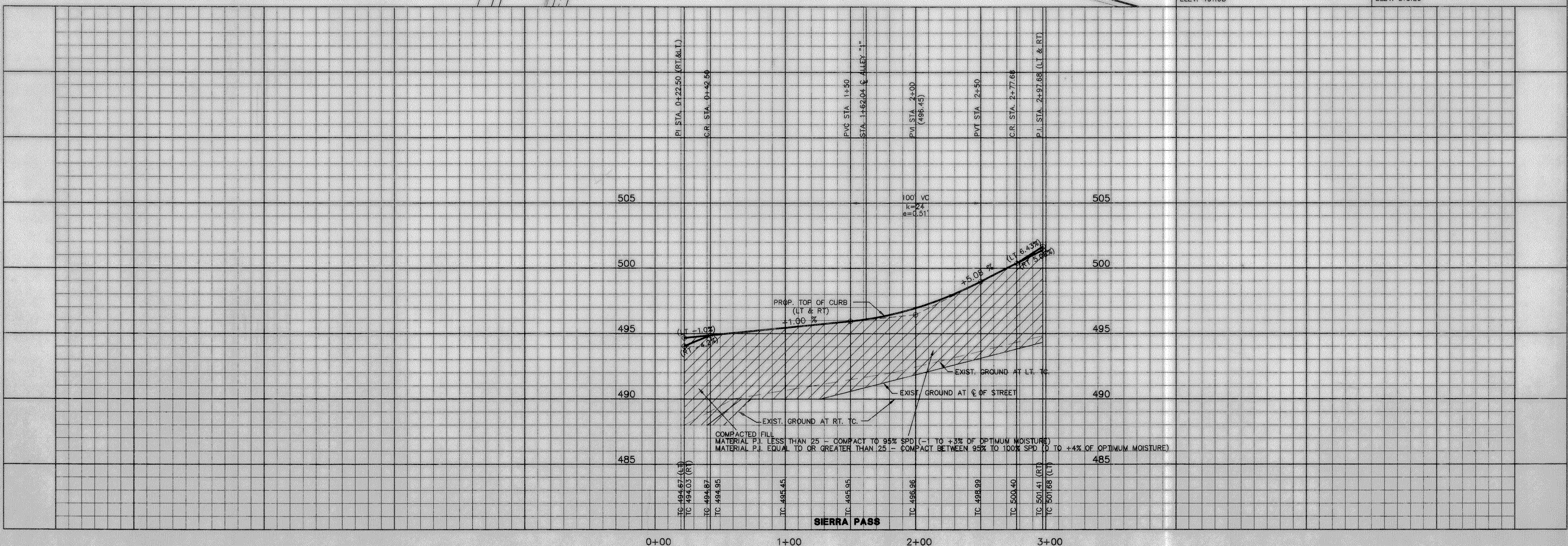
FUTURE CITY PARK



ASEULT  
 Winkelmann & Associates, Inc. hereby states that this plan, to the best of our knowledge and belief, is a true and correct representation of the original approved construction documents. Winkelmann & Associates, Inc. does not certify as to the correctness or quality of construction as no field inspection was performed.  
 J.E. Winkelmann, Jr. DATE: 7-20-98  
 WINKELMANN & ASSOCIATES, INC.



BENCHMARK:  
 PK NAIL IN E. OF CARUTH LANE & ALLEY INTERSECTION 150'± EAST OF MORNINGSTAR DRIVE. ELEV. 491.68  
 BENCHMARK:  
 "X" CHISELED IN E. OF ALLEY EAST OF MORNINGSTAR DRIVE WITHIN 3RD LOT NORTH OF MIDNIGHT PASS. ELEV. 513.26



**Winkelmann & Associates, Inc.**  
 CONSULTING CIVIL ENGINEERS & SURVEYORS  
 12800 Wilshire Blvd, Suite 200  
 Dallas, Texas 75249  
 (214) 490-7999 FAX

SEAL  
 J.E. Winkelmann, Jr.  
 5-23-97

CARUTH LANE, PHASE FOUR  
 S.S. M.B. JONES SURVEY, ABSTRACT NO. 122  
 CITY OF ROCKWALL, TEXAS  
 LUMBERMEN INVESTMENT CORPORATION  
 5495 BELTUNE ROAD, SUITE 225  
 DALLAS, TEXAS 75240

**PAVING PLAN & PROFILE**  
**SIERRA PASS STA. 0+00 TO STA. 3+12.18**

Scale: 1"=40' Date: 5-9-97  
 Designed By: RB  
 Drawn By: MK  
 Checked By: F.E.M.  
 File: 14633P43.DWG  
 Project No.: 14633.01(20)

**6**  
**29**