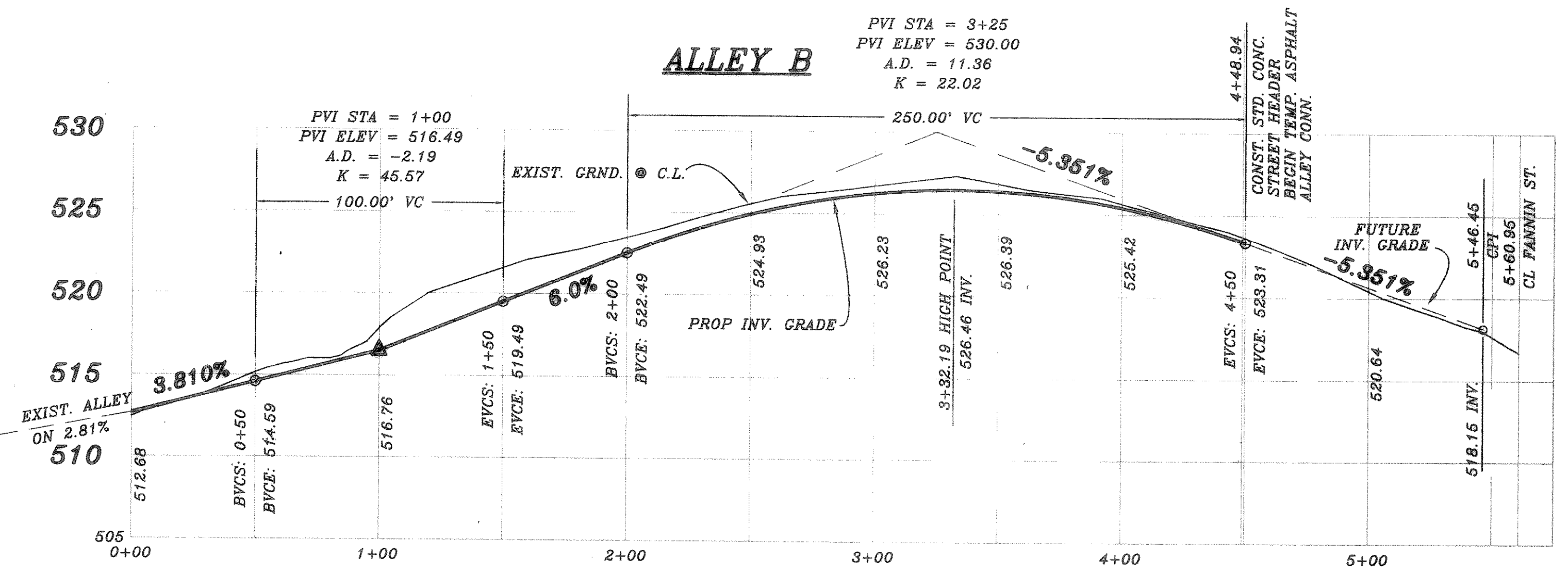
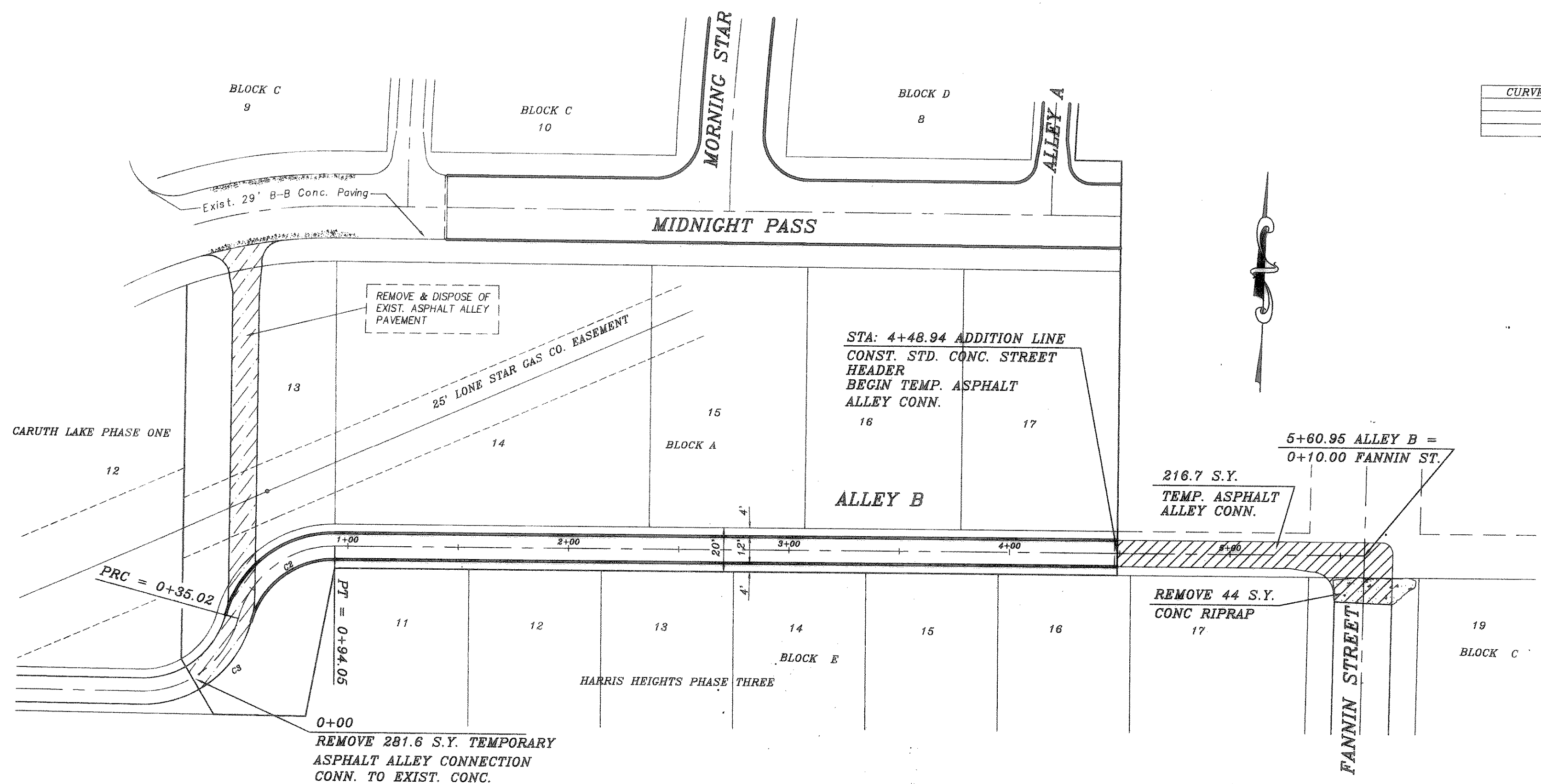
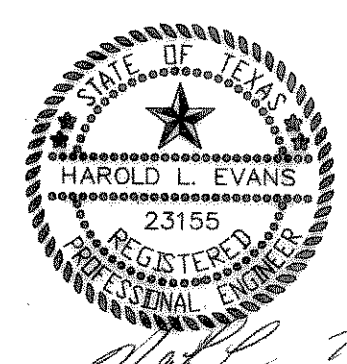


CURVE	RADIUS	LENGTH	TANGENT	CHORD	BEARING	DELTA
C1	720.10'	213.66'	107.62'	212.87'	S07°06'00"W	17°00'00"
C2	45.00'	59.02'	34.62'	54.88'	S50°48'47"W	75°08'59"
C3	45.00'	59.34'	34.87'	55.13'	N51°00'47"E	75°32'59"



AS-BUILT

B.M.
 SQUARE ON N. END OF HDWL ON EAST SIDE OF ST. HWY. NO. 205, 170' ± SOUTH OF CENTERLINE OF CARUTH LANE. ELEVATION = 482.40
 B.M.
 NORTHEAST TOP OF CURB AT NORTH END OF FANNIN STREET, 125' ± EAST OF SOUTHEAST ADDITION CORNER. ELEVATION = 518.18



REVISION DESCRIPTION		DATE	SCALE	DESIGN	DRAWN
		5/9/95	1" = 40' 1" = 6'	H.L.E.	
HAROLD L. EVANS CONSULTING ENGINEER P.O. BOX 28555 2331 GUS THOMASSON ROAD, SUITE 102 DALLAS, TEXAS 75228, (214) 328-8133					
PROPOSED PAVING ALLEY A & ALLEY B CARUTH LAKE NO. 3 CITY OF ROCKWALL					
SHEET NO.					5
JOB NO.					9322