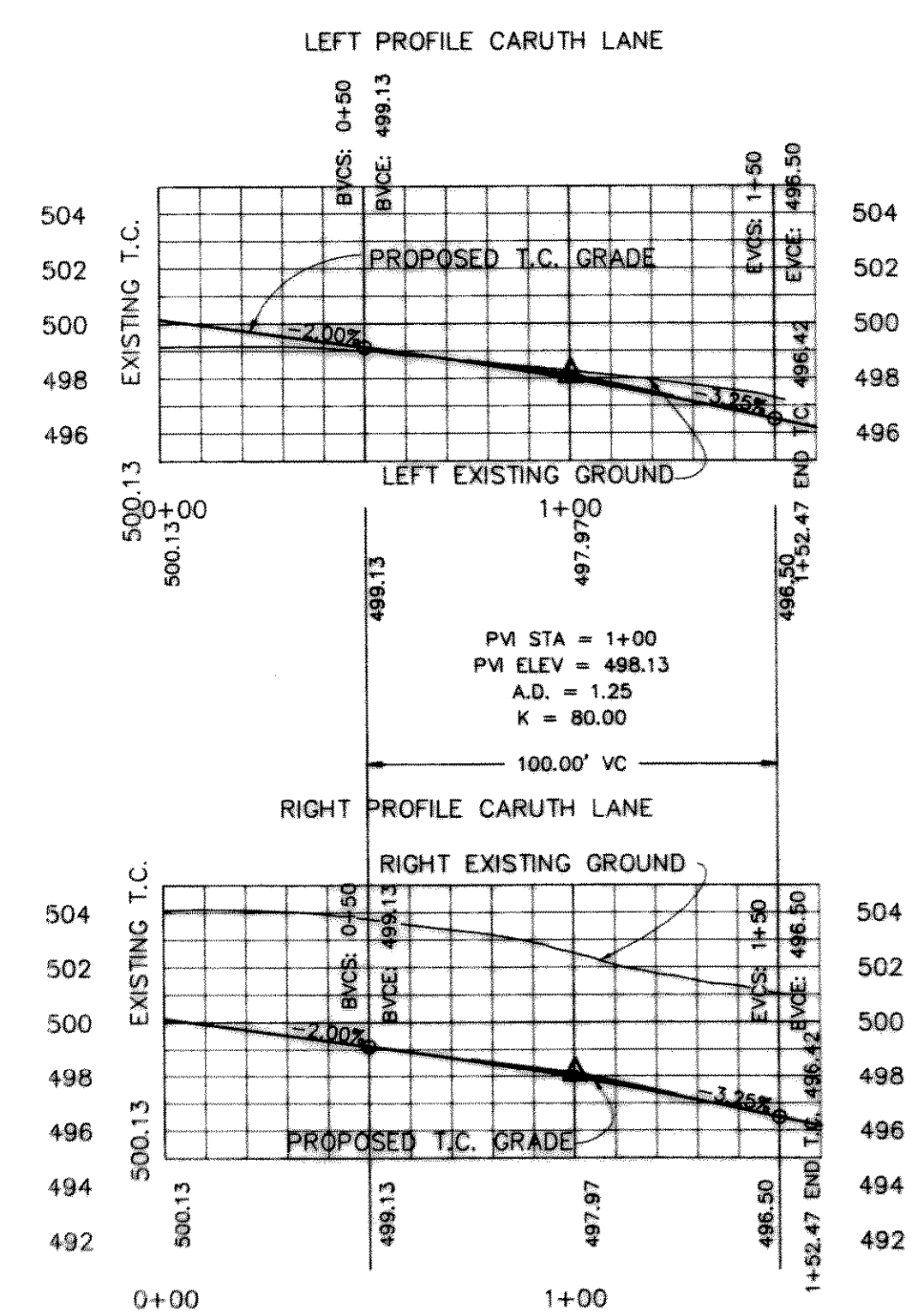
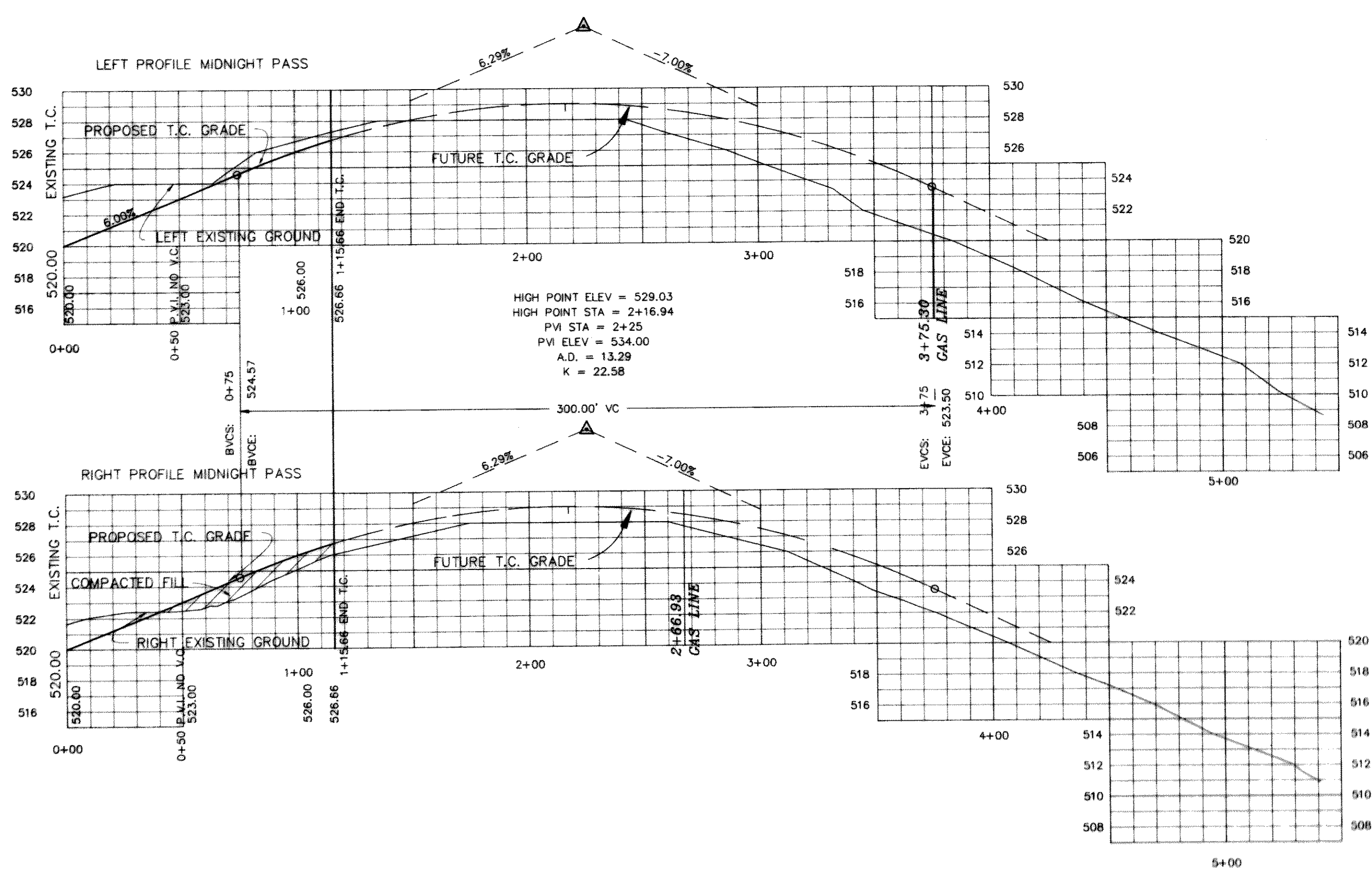
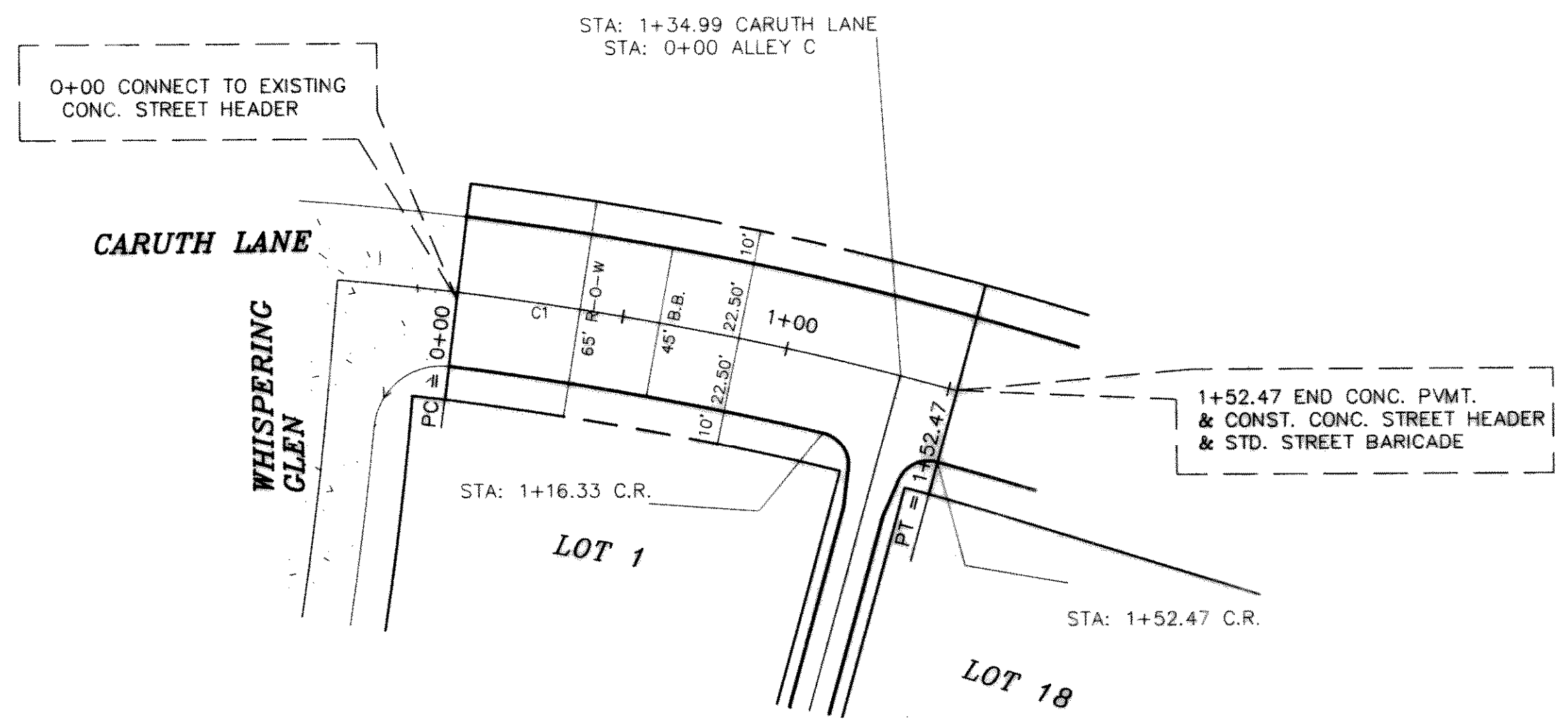
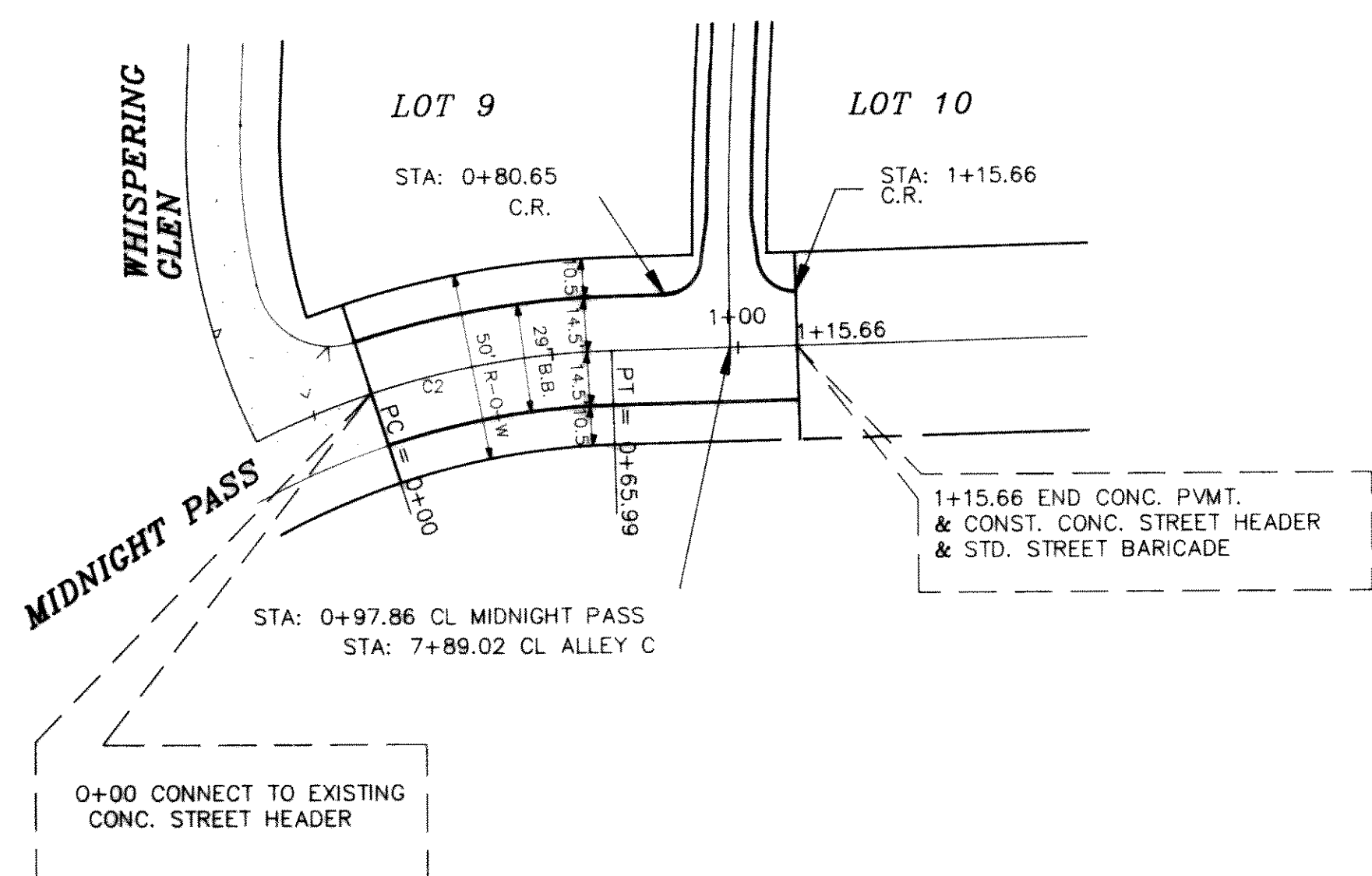


| CURVE | RADIUS | LENGTH | TANGENT | CHORD | BEARING | DELTA |
|-------|----------|---------|---------|---------|--------------|-----------|
| C1 | 1040.00' | 152.47' | 76.37' | 152.33' | N76°38'24" W | 08°23'59" |
| C2 | 225.00' | 65.99' | 33.23' | 65.75' | S80°17'52" W | 16°48'15" |



B.M.
 SQUARE ON N. END OF HDWL ON E. EAST
 SIDE OF ST. HWY. NO. 206, 170' +/-
 SOUTH OF CENTERLINE OF CARUTH LANE.
 ELEVATION = 482.40

B.M.
 NORTHEAST TOP OF CURB AT NORTH END
 OF FANNIN STREET, 545' +/- EAST OF
 SOUTHEAST ADDITION CORNER.
 ELEVATION = 518.18

[Professional Engineer Seal]
 HAROLD L. EVANS
 CONSULTING ENGINEER
 P.O. BOX 28365
 DALLAS, TEXAS 75228
 11-8-94

| | | | | | |
|--|----------------|---|------------------|---------------------|-----------------|
| HAROLD L. EVANS CONSULTING ENGINEER 2331 GUS THOMASSON ROAD, SUITE 102 DALLAS, TEXAS 75228. (214) 328-8133 | | PAVING PLAN MIDNIGHT PASS & CARUTH LANE CARUTH LAKE PHASE TWO CITY OF ROCKWALL | | SHEET NO. 3 7 | |
| REVISION DESCRIPTION _____ _____ | DATE 7/8/94 | SCALE 1" = 40' 1" = 6' | DESIGN H.L.E. | DRAWN K.E.B. | JOB NO. 9322 |