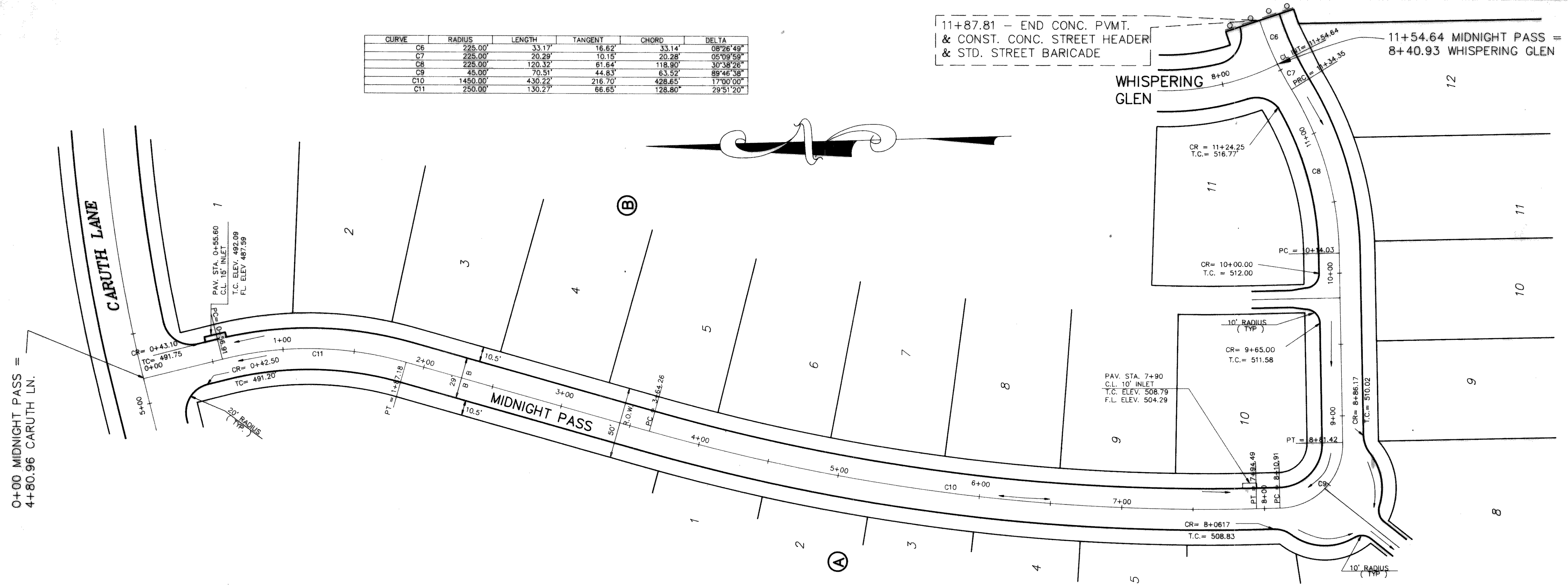


CURVE	RADIUS	LENGTH	TANGENT	CHORD	DELTA
C6	225.00'	33.17'	16.62'	33.14'	08°26'49"
C7	225.00'	20.29'	10.15'	20.28'	05°09'59"
C8	225.00'	120.32'	61.64'	118.90'	30°38'26"
C9	45.00'	70.51'	44.83'	63.52'	89°46'38"
C10	1450.00'	430.32'	216.70'	428.65'	17°00'00"
C11	250.00'	130.27'	66.65'	128.80'	29°51'29"

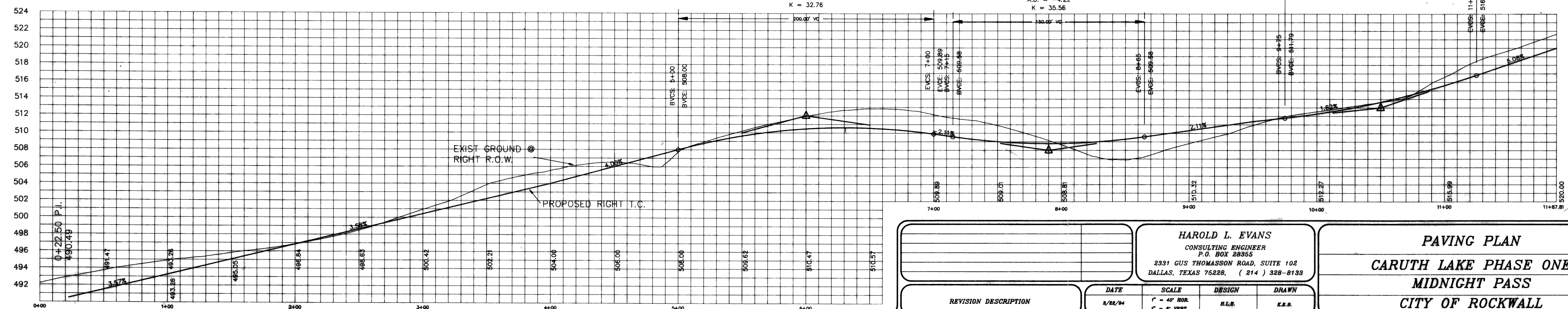
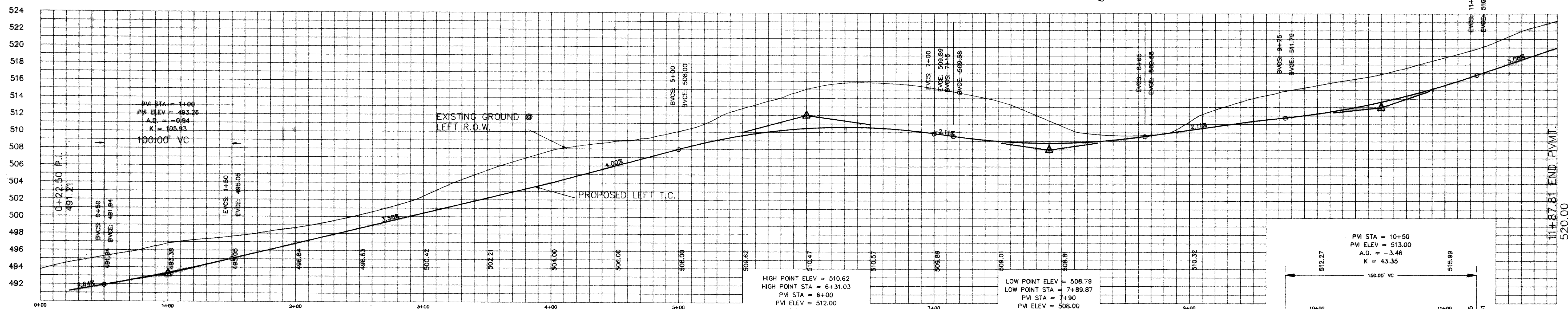
11+87.81 - END CONC. PVMT.
& CONST. CONC. STREET HEADER
& STD. STREET BARRICADE

11+54.64 MIDNIGHT PASS =
8+40.93 WHISPERING GLEN



B.M.
SQUARE ON N. END OF HDWL ON E. SIDE OF ST. HWY. NO. 205, 170' ± SOUTH OF CENTERLINE OF CARUTH LANE.
ELEVATION = 482.40

B.M.
NORTHEAST TOP OF CURB AT NORTH END OF FANNIN STREET, 545' ± EAST OF SOUTHEAST ADDITION CORNER.
ELEVATION = 518.18



REVISION DESCRIPTION	DATE	SCALE	DESIGN	DRAWN
	3/22/94	1" = 40' HOR. 1" = 6' VERT.	H.L.R.	K.E.R.

HAROLD L. EVANS
CONSULTING ENGINEER
P.O. BOX 28355
2331 GUS THOMASSON ROAD, SUITE 102
DALLAS, TEXAS 75228, (214) 388-8139

PAVING PLAN
CARUTH LAKE PHASE ONE
MIDNIGHT PASS
CITY OF ROCKWALL

SHEET NO.
5
11
JOB NO.
9322