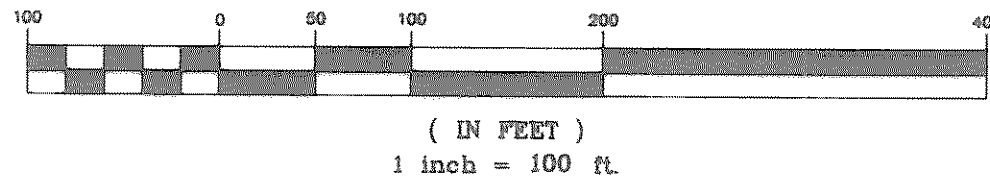
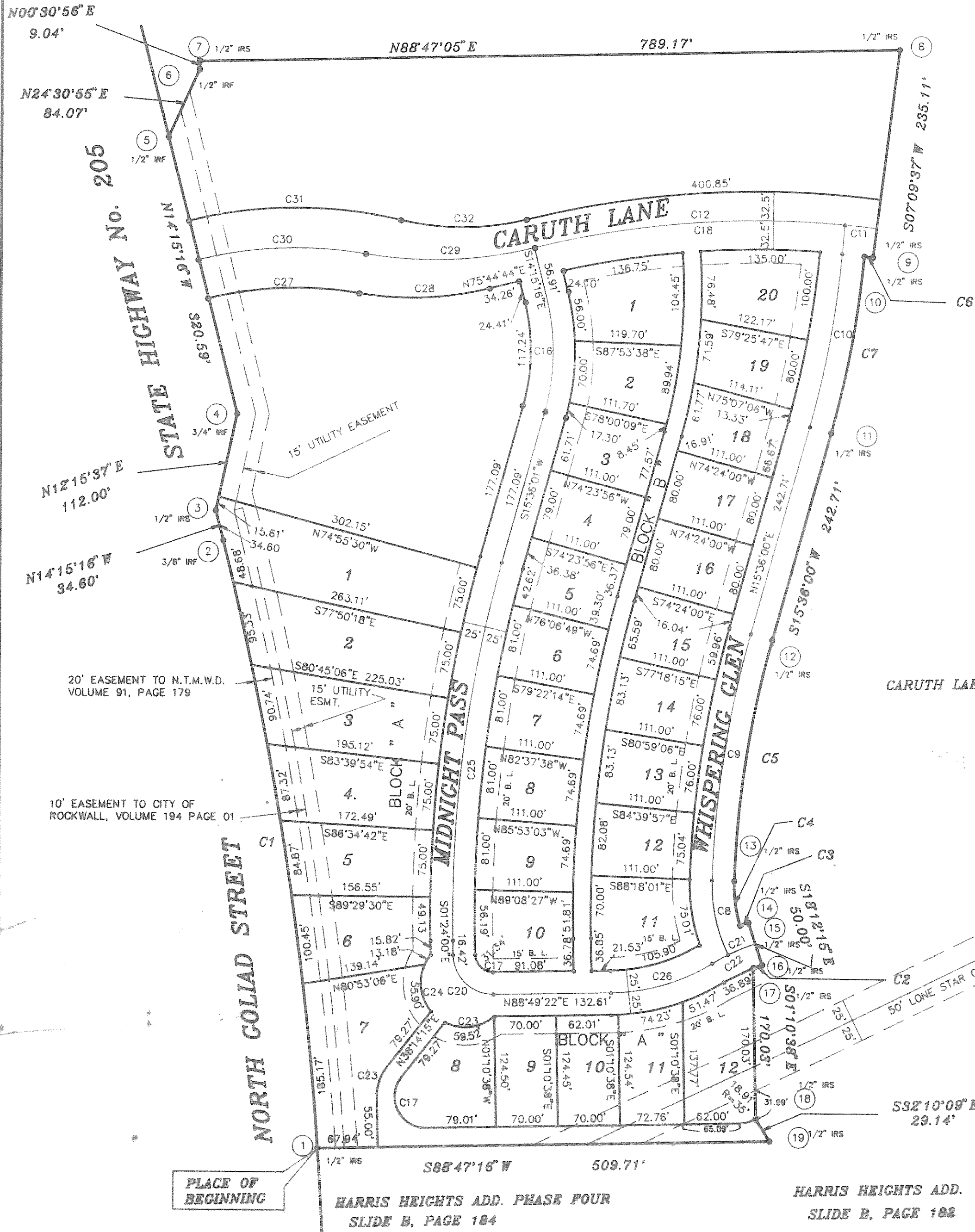


GRAPHIC SCALE



ROCKWALL Y.M.C.A.
VOL. 152, PAGE 77



CURVE	RADIUS	LENGTH	TANGENT	CHORD	BEARING	DELTA
C1	3869.84'	692.56'	347.21'	691.63'	N09°07'40\"	10°15'14\"
C2	200.00'	10.57'	5.29'	10.57'	S70°16'53\"	03°01'44\"
C3	250.00'	9.94'	4.97'	9.94'	S70°39'23\"	02°16'45\"
C4	150.00'	50.57'	25.53'	50.33'	S07°57'32\"	19°19'01\"
C5	1133.00'	274.87'	138.12'	274.20'	S08°38'59\"	13°54'01\"
C6	1007.50'	9.80'	4.90'	9.80'	N83°07'07\"	00°33'27\"
C7	1113.14'	202.42'	101.49'	202.14'	N10°23'26\"	10°25'09\"
C8	175.00'	86.59'	44.20'	85.71'	S12°28'33\"	28°21'03\"
C9	1158.00'	280.94'	141.16'	280.25'	S08°38'59\"	13°54'01\"
C10	1088.14'	197.88'	99.21'	197.60'	N10°23'26\"	10°25'09\"
C11	1040.00'	35.93'	17.97'	35.93'	N83°49'46\"	01°58'46\"
C12	1040.00'	175.49'	87.95'	175.28'	N89°39'11\"	09°40'05\"
C16	250.00'	130.27'	66.65'	128.80'	N00°40'24\"	29°51'20\"
C17	250.00'	130.27'	66.65'	128.80'	N00°40'24\"	29°51'20\"
C18	1040.00'	177.29'	88.86'	177.08'	S80°37'45\"	09°46'03\"
C20	45.00'	70.51'	44.83'	63.52'	S46°17'19\"	89°46'38\"
C21	45.00'	70.51'	44.83'	63.52'	S46°17'19\"	89°46'38\"
C22	45.00'	70.51'	44.83'	63.52'	S46°17'19\"	89°46'38\"
C23	1450.00'	430.22'	216.70'	428.65'	S07°06'00\"	17°00'00\"
C25	1450.00'	430.22'	216.70'	428.65'	S07°06'00\"	17°00'00\"
C26	225.00'	120.32'	61.64'	118.90'	N73°30'09\"	30°38'26\"
C23	1450.00'	430.22'	216.70'	428.65'	S07°06'00\"	17°00'00\"
C17	250.00'	130.27'	66.65'	128.80'	N00°40'24\"	29°51'20\"
C24	1450.00'	430.22'	216.70'	428.65'	S07°06'00\"	17°00'00\"
C27	413.15'	171.77'	87.14'	170.54'	S87°39'22\"	23°49'16\"
C28	356.42'	148.18'	75.18'	147.12'	N87°39'22\"	23°49'16\"
C29	458.15'	190.48'	96.64'	189.11'	N87°39'22\"	23°49'16\"
C30	458.15'	190.48'	96.64'	189.11'	N87°39'22\"	23°49'16\"
C31	503.15'	241.50'	123.12'	239.19'	S89°29'44\"	27°30'01\"
C32	298.31'	143.18'	73.00'	141.81'	N89°29'44\"	27°30'01\"

CARUTH LAKE DEVELOPMENT CORPORATION
VOL. 694, PAGE 47

SURFACE ADJUSTED COORDINATE'S

	NORTH'S	EAST'S
1	7032353.13090000	2594765.48290000
2	7033036.00573379	2594655.76369336
3	7033069.54045910	2594647.24417429
4	7033178.98608818	2594671.02766148
5	7033489.70567054	2594592.08914703
6	7033566.19683021	2594626.92727400
7	7033575.23646431	2594627.05411240
8	7033591.97438600	2595416.05058080
9	7033358.69365870	2595386.74488790
10	7033359.86816770	2595377.01290810
11	7033161.04010980	2595340.55546730
12	7032927.27270550	2595275.28653880
13	7032656.19121160	2595234.04830390
14	7032606.34354970	2595241.01744070
15	7032609.63733240	2595250.40003510
16	7032562.13987000	2595266.02024710
17	7032558.57294320	2595256.06841570
18	7032388.57610630	2595259.56180090
19	7032363.91309200	2595275.07440640

NOTE: ALL PROPERTY CORNERS, POINT OF CURVATURES AND POINT OF TANGENCY ARE 1/2\"

HAROLD L. EVANS
CONSULTING ENGINEER
P.O. BOX 28365
2331 GUS THOMASSON ROAD, SUITE 102
DALLAS, TEXAS 75228, (214) 328-8133

CARUTH LAKE PHASE ONE
S.S. McCURRY SURVEY, ABSTRACT No. 140
CITY OF ROCKWALL, ROCKWALL COUNTY, TEXAS
CARUTH LAKE DEVELOPMENT CORPORATION - OWNER
P.O. BOX 369 ROCKWALL, TEXAS 75087, TEL (214) 771-6236