

CONSTRUCTION MATERIALS AND METHODS SHALL BE PER NORTH CENTRAL TEXAS COUNCIL OF GOVERNMENTS (NCTCOG) 3RD EDITION AND IN STRICT ACCORDANCE WITH THE CITY OF ROCKWALL'S STANDARD DETAILS.

2.059 ACRES

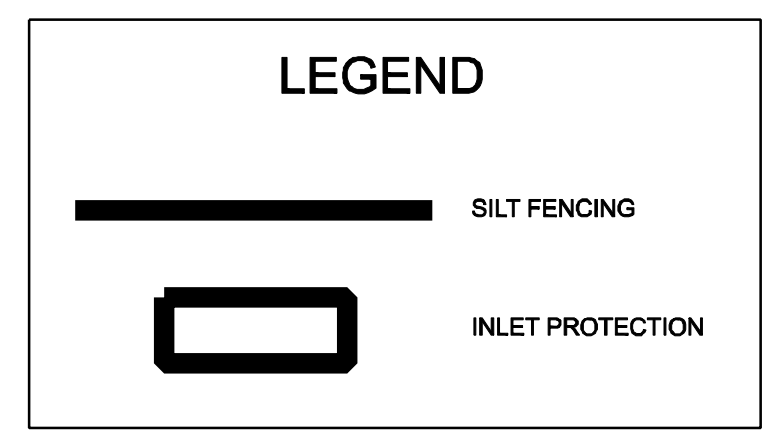
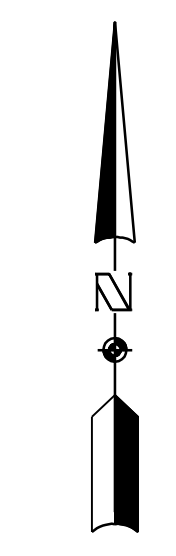
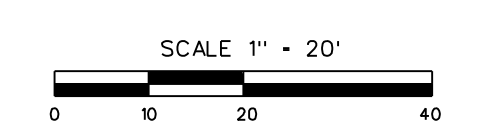
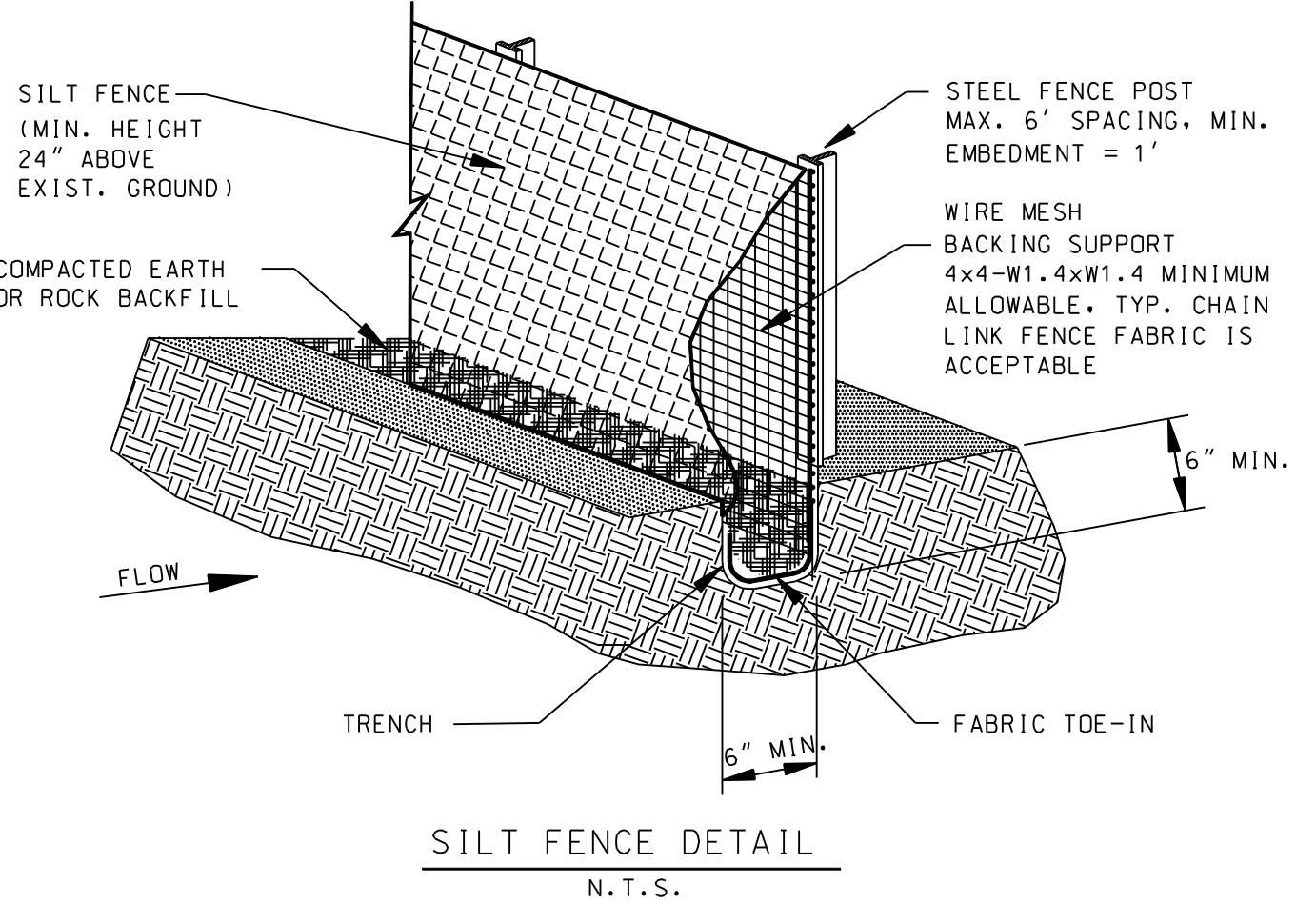
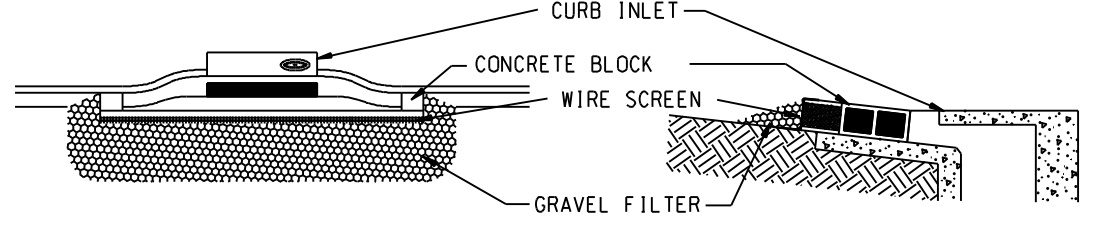
9,693 SQ.FT.
RACERAC PETROLEUM, INC
VOL. 85, PG. 80
D.R.R.C.T.

0.33 ACRES
D. LOFTIS
87, PG. 310
R.R.C.T.

LOT 3, BLOCK A
LAKESIDE
CHEVROLET
CAB. G, SLIDE
39-40 P.R.R.C.T.

FF 561.66

24' INGRESS-EGRESS
EASEMENT
CAB. C, SLIDE 108
P.R.R.C.T.



GENERAL NOTES

- ALL SITES GREATER THAN 1 ACRE MUST HAVE A VALID TEXAS POLLUTION DISCHARGE ELIMINATION SYSTEM (TPDES) PERMIT ISSUED BY THE TCEQ AS DEFINED IN TPDES GENERAL PERMIT NO. TXR150000.
- EACH PRIME CONTRACTOR SHALL OBTAIN AND SUBMIT TO OWNER/ENGINEER A POLLUTION PREVENTION CERTIFICATION FROM EACH SUBCONTRACTOR WHOSE WORK IMPACTS THE STORM WATER POLLUTION PREVENTION PLAN (SWPPP) PRIOR TO THE PERFORMANCE OF ANY WORK BY SAID SUBCONTRACTOR. THESE CERTIFICATIONS SHALL BECOME A PART OF THE STORM WATER POLLUTION PREVENTION PLAN.
- CONTRACTOR SHALL FURNISH AND INSTALL EROSION CONTROL MEASURES SHOWN IMMEDIATELY UPON ENTERING SITE. REPAIRS OR MODIFICATIONS TO THE MEASURES WILL BE MADE BY THE CONTRACTOR IF THE CONTROL MEASURES PROVE INEFFECTIVE OR IF ADDITIONAL CONTROL MEASURES ARE NECESSARY.
- AT A MINIMUM, PERIMETER CONTROLS SUCH AS SILT FENCE OR STRAW WATTLE/COIR ROLLS SHALL BE INSTALLED AT ALL DOWN SLOPE BOUNDARIES AND AS WARRANTED WHERE PAVEMENT REMOVAL, UTILITY CONSTRUCTION, GRADING, OR OTHER CONSTRUCTION ACTIVITIES ARE TO BE PERFORMED. CONTRACTOR SHALL AT ALL TIMES TAKE SUCH MEASURES AS NECESSARY TO MINIMIZE OFF-SITE TRACKING OR TRANSPORT OF SEDIMENT AND DEBRIS.
- THE CONTRACTOR SHALL BE RESPONSIBLE FOR DAMAGES TO ADJACENT PROPERTY OR TO RECEIVING WATERS CAUSED BY IMPROPERLY INSTALLED OR POORLY MAINTAINED EROSION CONTROL MEASURES.
- THE CONTRACTOR SHALL BE RESPONSIBLE FOR THE REMOVAL AND DISPOSAL OF ANY SILT DEPOSITS OR TRACKING BEYOND THE LIMITS OF CONSTRUCTION CAUSED BY HIS OPERATIONS AND/OR FAILURE OF THE EROSION CONTROL MEASURES.
- CONTRACTOR SHALL REMOVE AND PROPERLY DISPOSE OF ACCUMULATED SILT AND SEDIMENT FROM EROSION CONTROL MEASURES WHEN IT REACHES A DEPTH OF SIX (6) INCHES OR IMPAIRS THE EFFECTIVENESS OF THE MEASURES. ANY SEDIMENTS TRACKED OFF-SITE MUST BE REMOVED IMMEDIATELY.
- THE OWNER'S REPRESENTATIVE WILL INSPECT THE PROJECT AT A MINIMUM OF EVERY SEVEN DAYS AND AFTER EVERY RAINFALL OF 0.5 INCHES OR GREATER TO DETERMINE THE INTEGRITY AND EFFECTIVENESS OF THE EROSION CONTROL MEASURES. A WRITTEN INSPECTION REPORT WILL BE FILED WITH THE POLLUTION PREVENTION PLAN. THIS INSPECTION DOES NOT RELIEVE THE CONTRACTOR'S RESPONSIBILITY FOR INSPECTION AND MAINTENANCE OF THE EROSION CONTROL MEASURES OR HIS DUTY TO COMPLY WITH THE INTENT AND CONDITIONS OF THE NPDES GENERAL PERMIT.
- THE CONTRACTOR SHALL PROVIDE ADEQUATE PROTECTION OF STORM DRAIN INLETS. WHERE INLETS ARE BEING REMOVED OR INSTALLED, THE CONTRACTOR SHALL PREVENT MATERIAL FROM ENTERING THE STORM DRAIN SYSTEM.
- ALL OFF-SITE STOCKPILES SOILS WILL BE SURROUNDED BY SILT FENCE, SEDIMENT CONTROL SWALE, OR EQUIVALENT MEASURE, AS APPROVED BY ENGINEER, TO PROPERLY CONTROL SEDIMENT RUNOFF.
- THE CONTRACTOR SHALL STABILIZE ANY AREA WHERE CONSTRUCTION ACTIVITY IS TEMPORARILY OR PERMANENTLY CEASED FOR MORE THAN 14 DAYS.
- AN EROSION CONTROL MAT SHALL BE INSTALLED IN ALL OPEN CHANNELS AND DETENTION POND OR ON SLOPES GREATER THAN 4:1 UNTIL VEGETATION IS ESTABLISHED.
- ALL EROSION AND SEDIMENT PROTECTION MEASURES SHALL MEET THE NCTCOG ISWM DESIGN MANUAL SPECIFICATIONS.
- ALL SLOPES, BOTTOM OF DETENTION POND AND LANDSCAPE BUFFER AREA SHALL BE SEEDED, SODDED, HYDRMULCHED IMMEDIATELY AFTER FINAL GRADING.

As Builts 7.13.17

HAMILTON DUFFY, PC
CONSULTING
CIVIL & ENVIRONMENTAL ENGINEERS - PLANNERS - CONSTRUCTION MANAGERS
8241 MID-CITIES BLVD. - NORTH RICHLAND HILLS, TEXAS 76180-4712
PHONE (817) 268-0408 FAX (817) 284-8408

SITE CONSTRUCTION PLANS
CARMEL CAR WASH
2003 SOUTH GOLIAD STREET
CITY OF ROCKWALL, TEXAS
EROSION CONTROL PLAN

AS-BUILT DRAWINGS
THIS DOES NOT IMPLY A GROUND SURVEY. THESE DOCUMENTS WERE PREPARED FROM ORIGINAL DESIGN DRAWINGS AND CONSTRUCTION MODIFICATIONS NOTED BY CONTRACTOR.
KEITH M. HAMILTON 87354
DATE 7-13-17

NO.	REVISION	DATE	BY	DATE	JOB
					048-019
					DATE 7/13/2017
					DESIGNED K.M.H.
					DRAWN J.B.E.
					CHECKED K.M.H.
					TEXAS REGISTRATION NO. F-005260