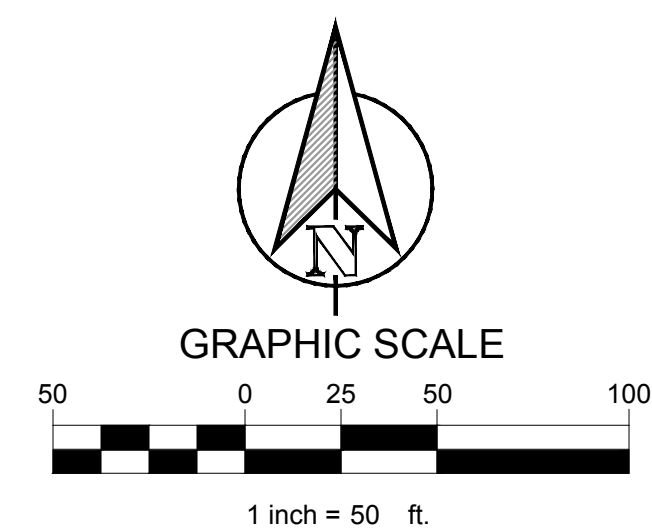


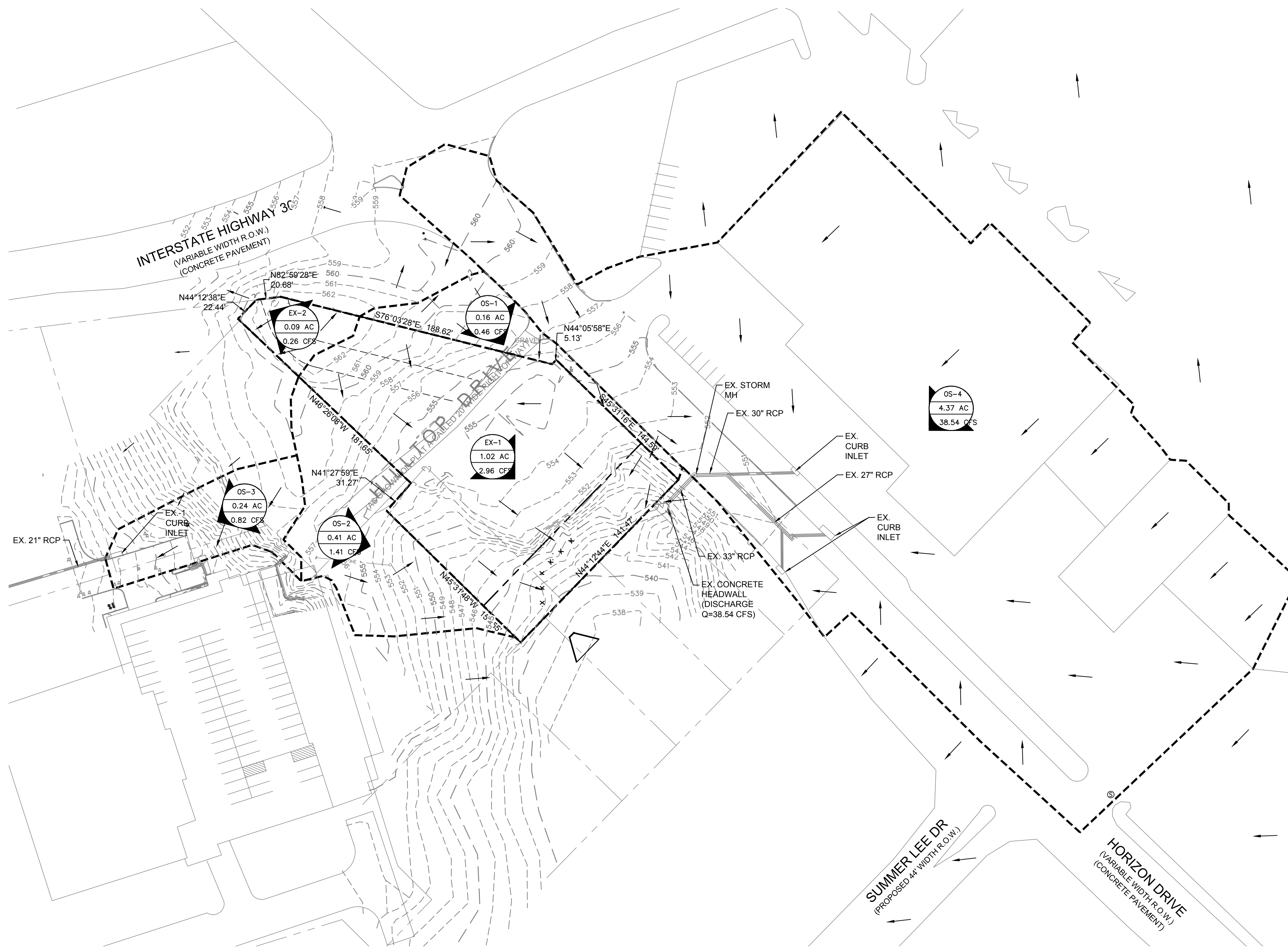
PLOTTED BY: JVALDEZ
 PLOT DATE: 11/16/2017 1:30 PM
 LOCATION: C:\EGNITTE\SHARED\PROJECTS\2016-029 CRESTVIEW ROCKWALL\CADD\SHEETS\C-7 EXISTING DRAINAGE AREA MAP.DWG
 LAST SAVED: 11/16/2017 1:29 PM



LEGEND	
	- DRAINAGE AREA - DRAINAGE AREA IN ACRES - FLOW FOR DRAINAGE AREA IN CFS
	DIRECTION OF FLOW
	DRAINAGE AREA BOUNDARY

HYDROLOGIC CALCULATIONS - PRE DEVELOPMENT						
DRAINAGE AREA	AREA (AC.)	TC (MIN)	C	I ₁₀₀ (IN/HR)	Q ₁₀₀ (CFS)	COLLECTION POINT
EX-1	1.02	20	0.35	9.80	3.50	DRAINS SOUTH EAST OFF-SITE
EX-2	0.09	20	0.35	9.80	0.31	DRAINS TOWARDS IH 30
OS-1	0.16	20	0.35	9.80	0.55	DRAINS SOUTH EAST OFF-SITE
OS-2	0.41	20	0.35	9.80	1.41	DRAINS SOUTH EAST OFF-SITE
OS-3	0.24	20	0.35	9.80	0.82	DRAINS EXISTING CURB INLET
OS-4*	4.37	10	0.90	9.80	38.54	DRAINS TO EX CURB INLET
TOTAL DRAINAGE	6.29				45.13	

*OS-4 Area based off of asbuilt drawings by Harold Evan Consulting Engineers dated 8/16/1984 and existing contour data from city. Drainage areas are approximate.



CARENOW
 LOT 1 & 2, BLOCK A
 BRISCOE/HILCREST ADDITION
 ROCKWALL, TX

No.	DATE	REVISION	BY

EXISTING DRAINAGE AREA MAP

This drawing has been revised to show those changes during the construction process reported by the contractor to ClayMoore Engineering, Inc. and considered to be significant. This drawing is not guaranteed to be "As Built" but is based on the information made available.
 By: *Matt Hill* Date: 11/16/2017

BENCH MARKS
 BENCH MARK NO. 6-1
 CONCRETE MONUMENT WITH BRASS CAP AT THE SOUTHWEST CORNER OF MARINA AND VILLAGE ROAD
 ELEV: 506.05
 BENCH MARK NO. RESET 1
 AT THE WEST END OF SUMMER LEE AND WEST OF FM 740.
 ELEV: 567.70

DESIGN:	JEV
DRAWN:	JEV
CHECKED:	CLC
DATE:	04/03/2017

SHEET
C-9