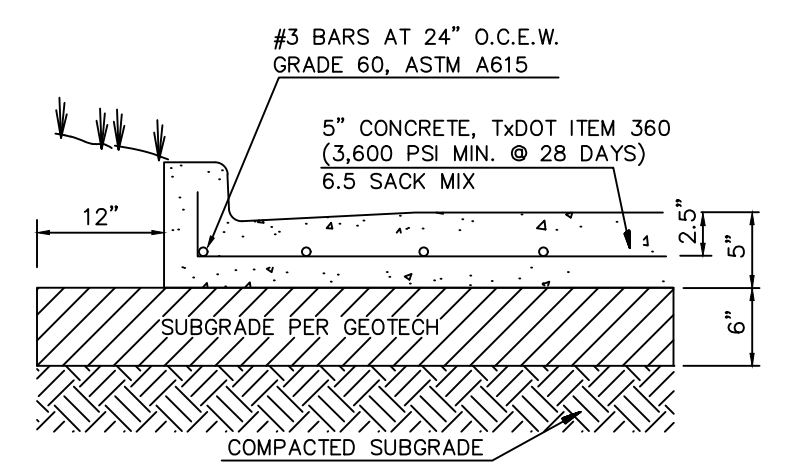


CARENOW  
 LOT 1 & 2, BLOCK A  
 BRISCOE/HILCREST ADDITION  
 ROCKWALL, TX

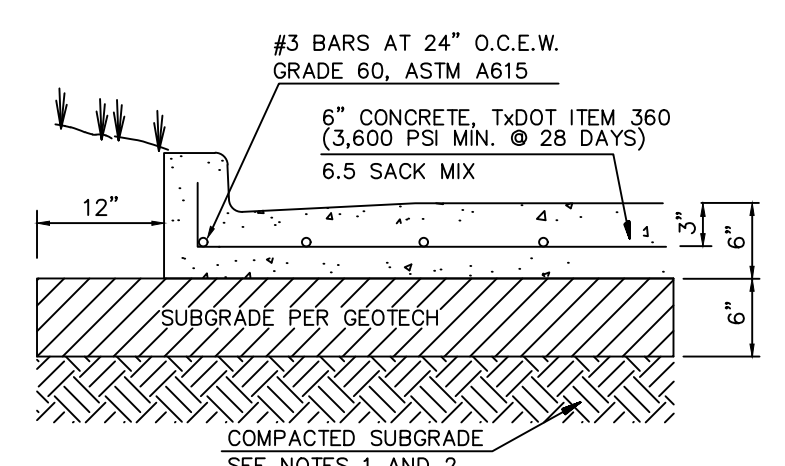
| No. | DATE | REVISION | BY |
|-----|------|----------|----|
|     |      |          |    |
|     |      |          |    |
|     |      |          |    |

CONSTRUCTION DETAILS (1 OF 2)

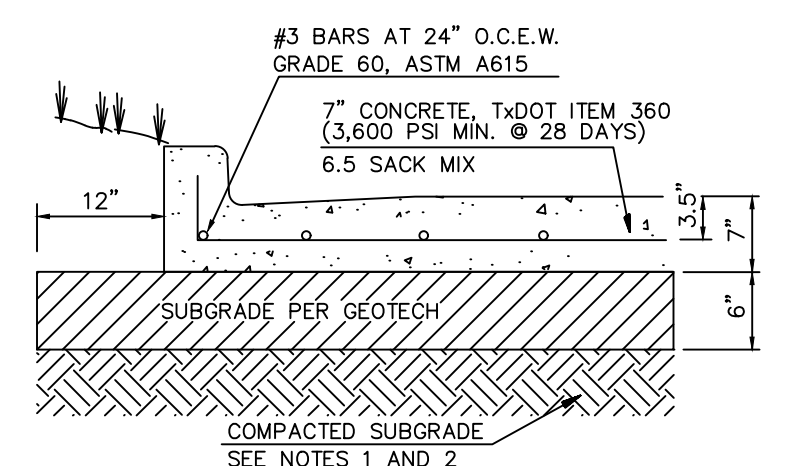
|             |            |
|-------------|------------|
| DESIGN:     | JEV        |
| DRAWN:      | JEV        |
| CHECKED:    | CLC        |
| DATE:       | 04/03/2017 |
| SHEET       |            |
| <b>C-15</b> |            |
| File No.    | 2016-029   |



**LIGHT DUTY CONCRETE PAVING**  
 SCALE: NONE



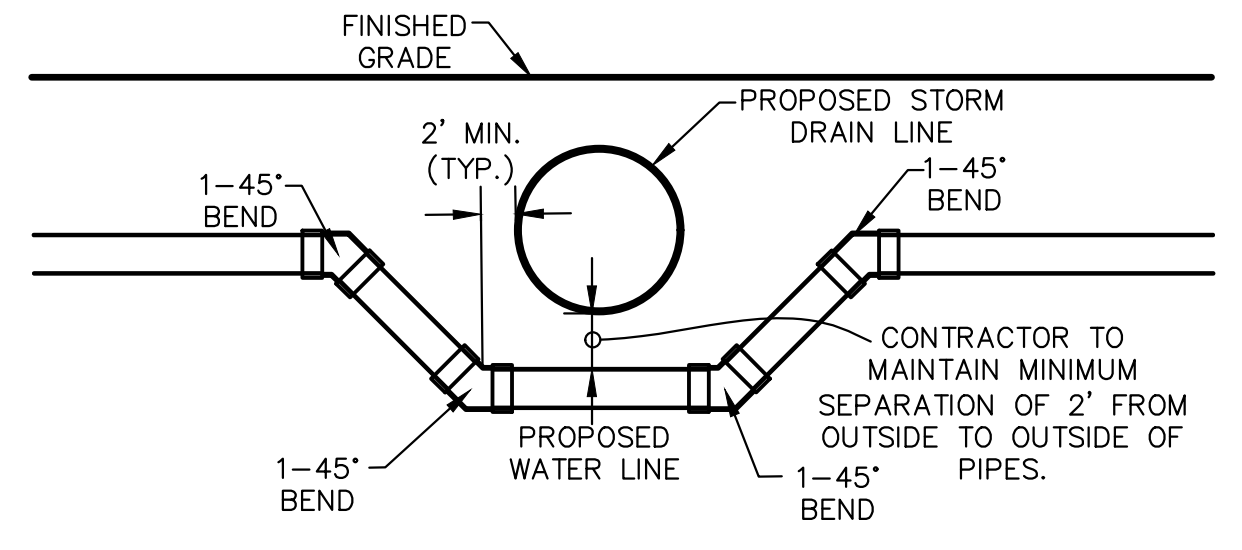
**HEAVY DUTY CONCRETE PAVING**  
 SCALE: NONE



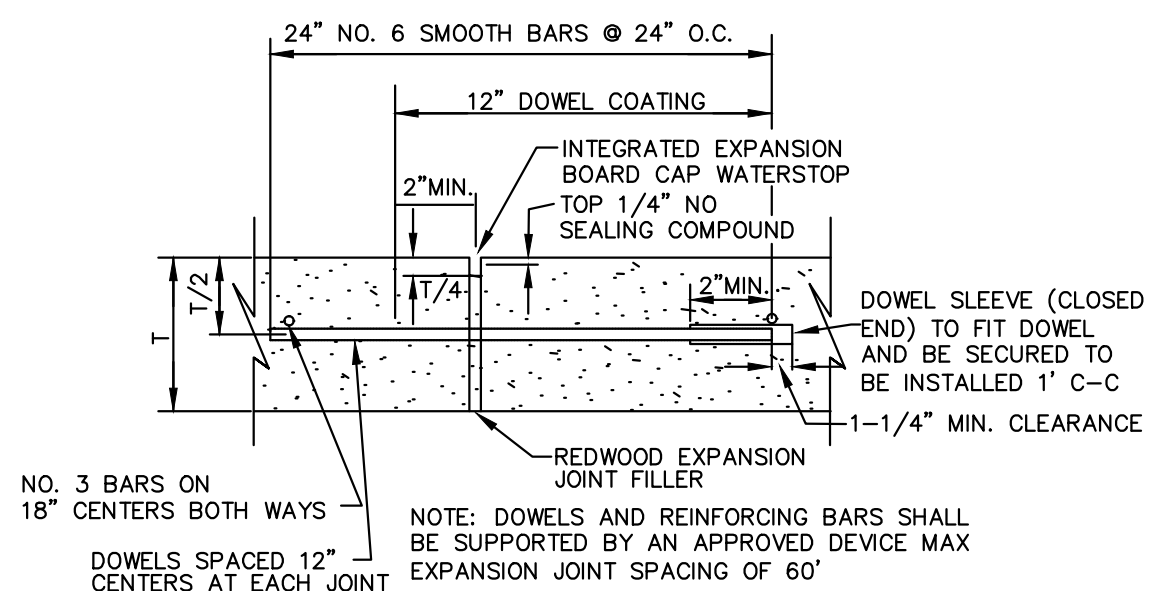
**DUMPSTER DUTY CONCRETE PAVING**  
 SCALE: NONE

- GENERAL PAVING NOTES**
- REFER TO GEOTECHNICAL REPORT FOR ALL SUBGRADE SPECIFICATIONS AND REQUIREMENTS. NO SAND ALLOWED UNDER ANY PAVING.
  - FOR PREPARATION OF PAVEMENT SUBGRADE, FILL PLACED BELOW FINISHED SUBGRADE ELEVATION IN ALL AREAS TO BE PAVED SHALL BE COMPACTED TO MIN. 95% AND A MAX. 98% OF THE STANDARD EFFORT (ASTM D698). THE MOISTURE CONTENT SHOULD RANGE FROM +0 TO +4 PERCENTAGE POINTS ABOVE OPTIMUM.
  - CONCRETE SHALL HAVE A MINIMUM 3,600 PSI (MIN 6.5 SACK MIX) COMPRESSIVE STRENGTH AT 28 DAYS. JOINTS IN CONCRETE PAVING SHALL BE FORMED AT A MAXIMUM OF 20 FEET. ALL OTHER JOINT SPACING SHALL BE INSTALLED PER PROJECT SPECIFICATIONS.
  - JOINTS IN CONCRETE PAVEMENT SHALL NOT EXCEED 20 FOOT SPACING.
  - NO SAND SHALL BE USED UNDER ANY PAVING

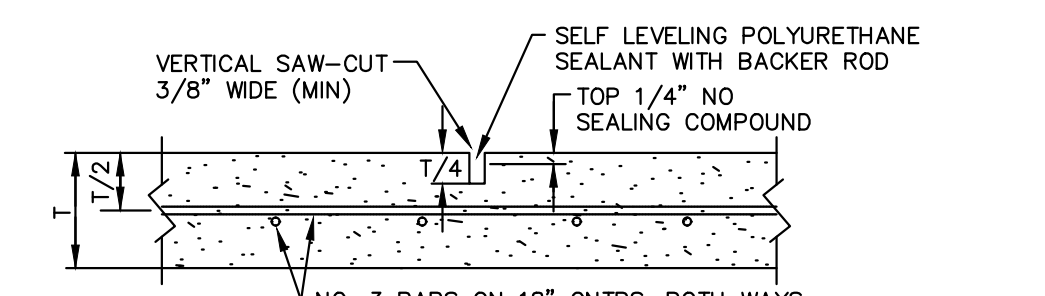
**PAVING DETAILS**  
 SCALE: NONE



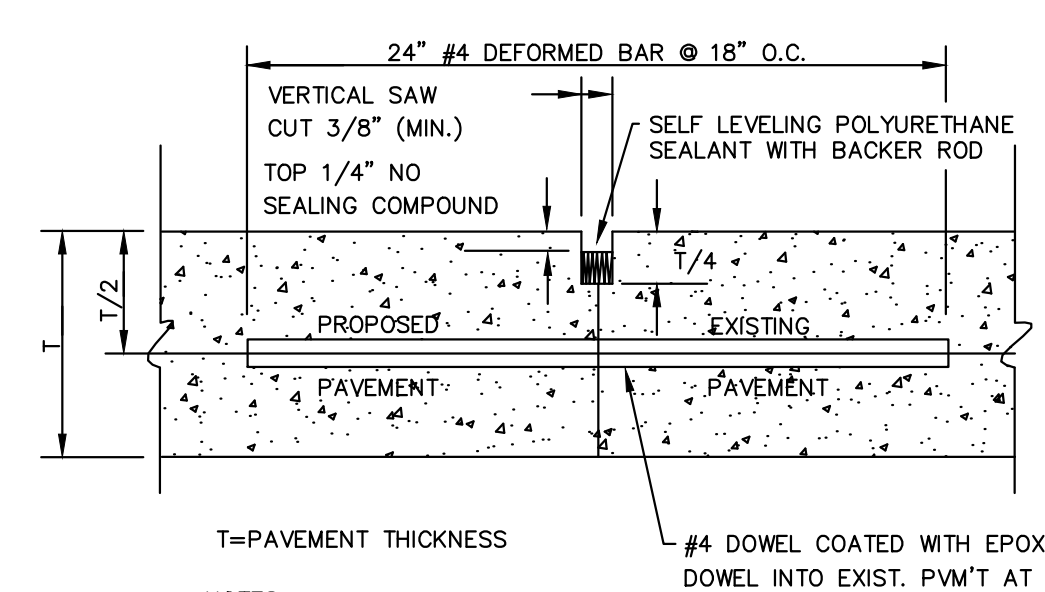
**WATER CROSSING DETAIL**  
 N.T.S.



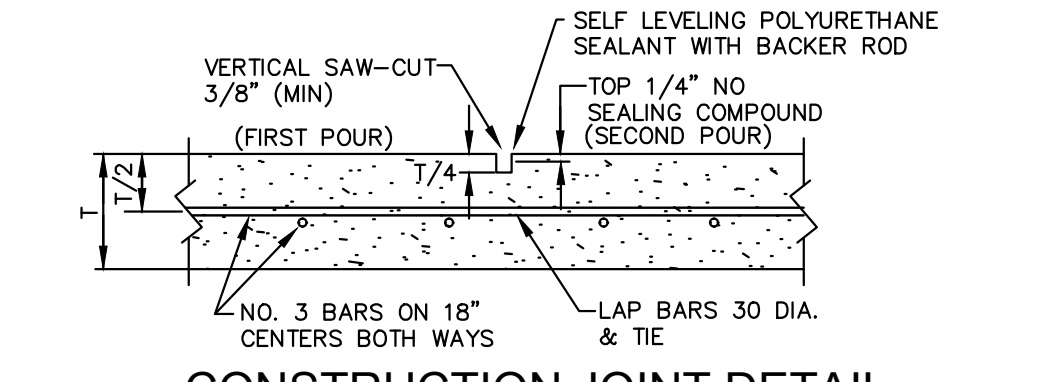
**TRANSVERSE EXPANSION/ ISOLATION JOINT DETAIL**  
 SCALE: NONE



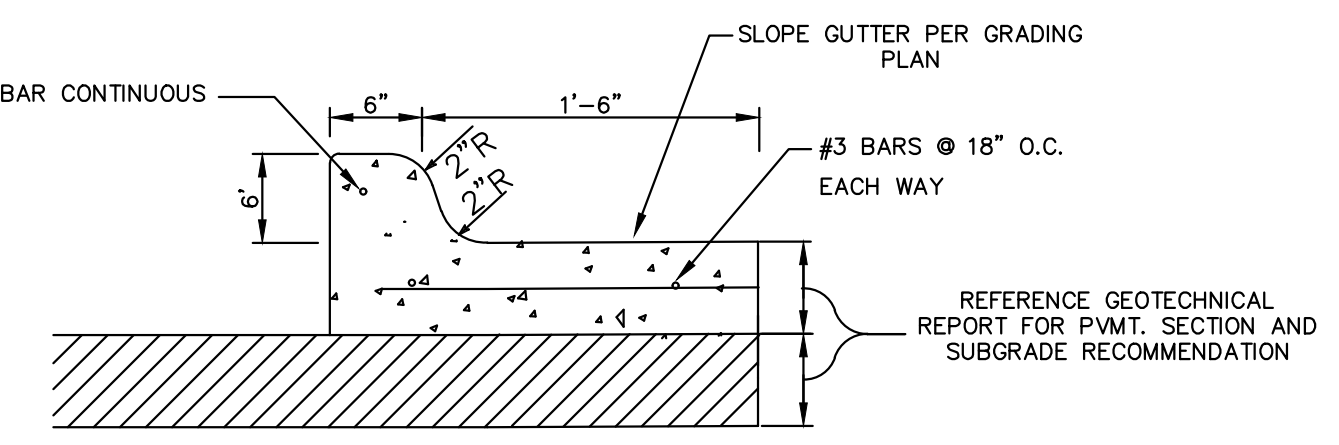
**CONTRACTION JOINT DETAIL**  
 SCALE: NONE



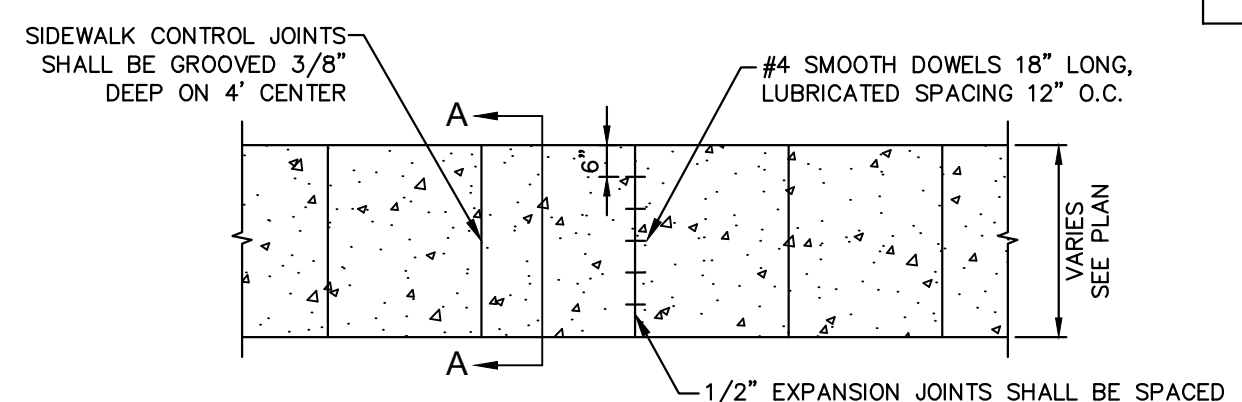
**LONGITUDINAL BUTT JOINT DETAIL**  
 SCALE: NONE



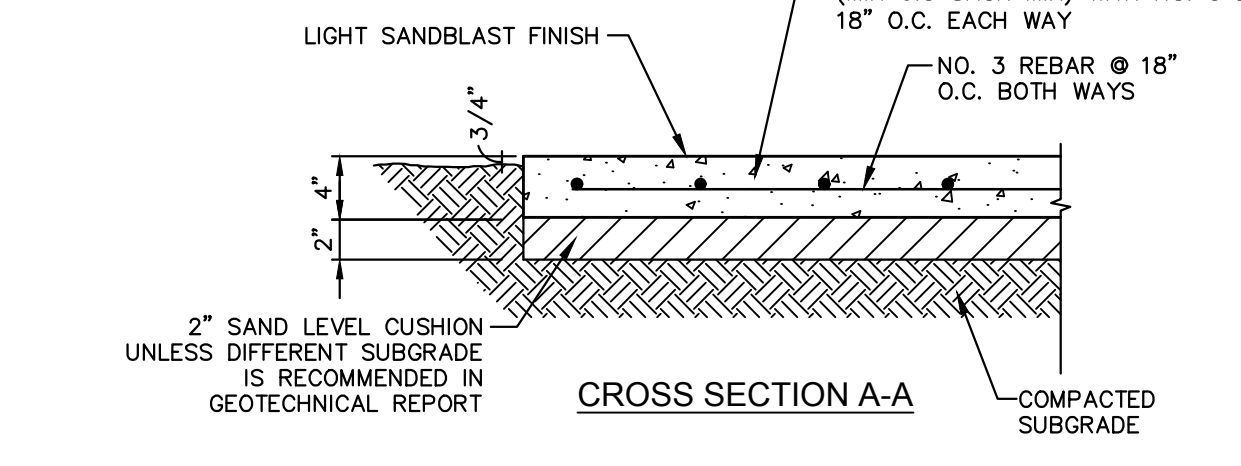
**CONSTRUCTION JOINT DETAIL**  
 SCALE: NONE



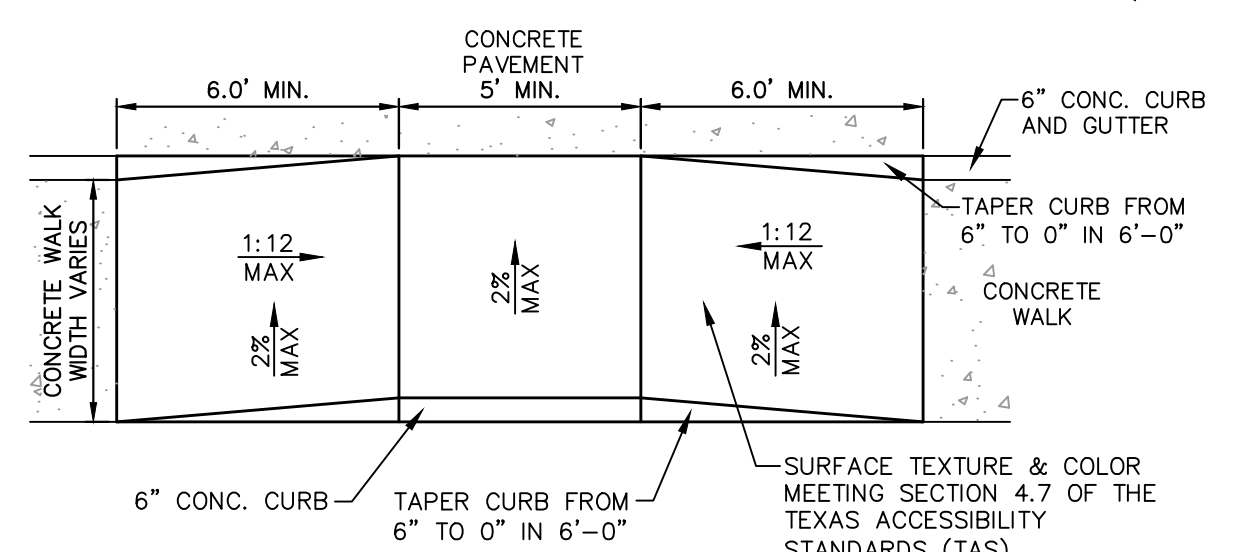
**CONCRETE CURB AND GUTTER DETAIL**  
 SCALE: NONE



**PRIVATE CONCRETE SIDEWALK DETAIL**  
 N.T.S.

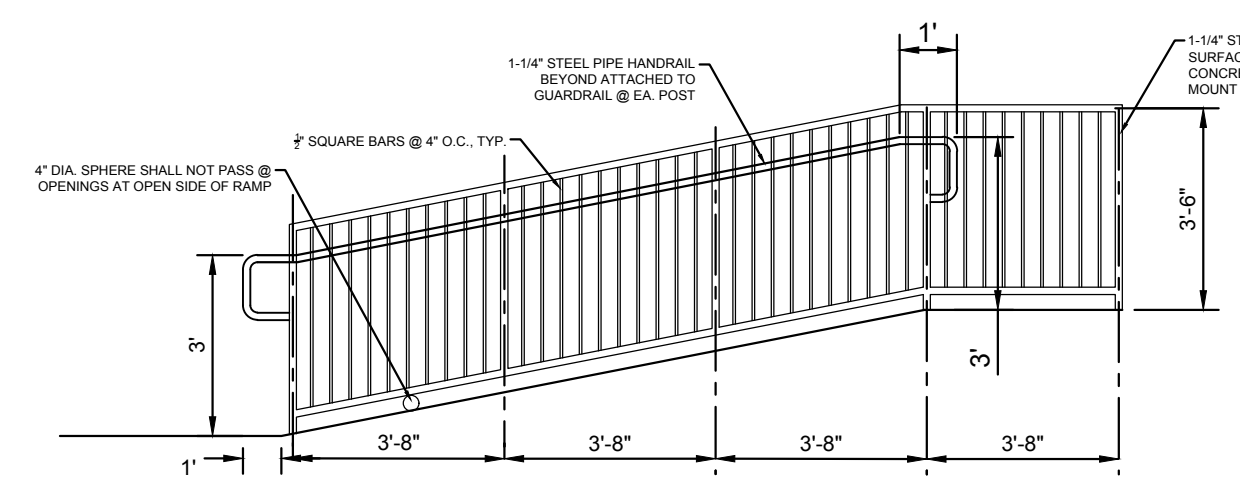


**PRIVATE CONCRETE SIDEWALK DETAIL**  
 N.T.S.

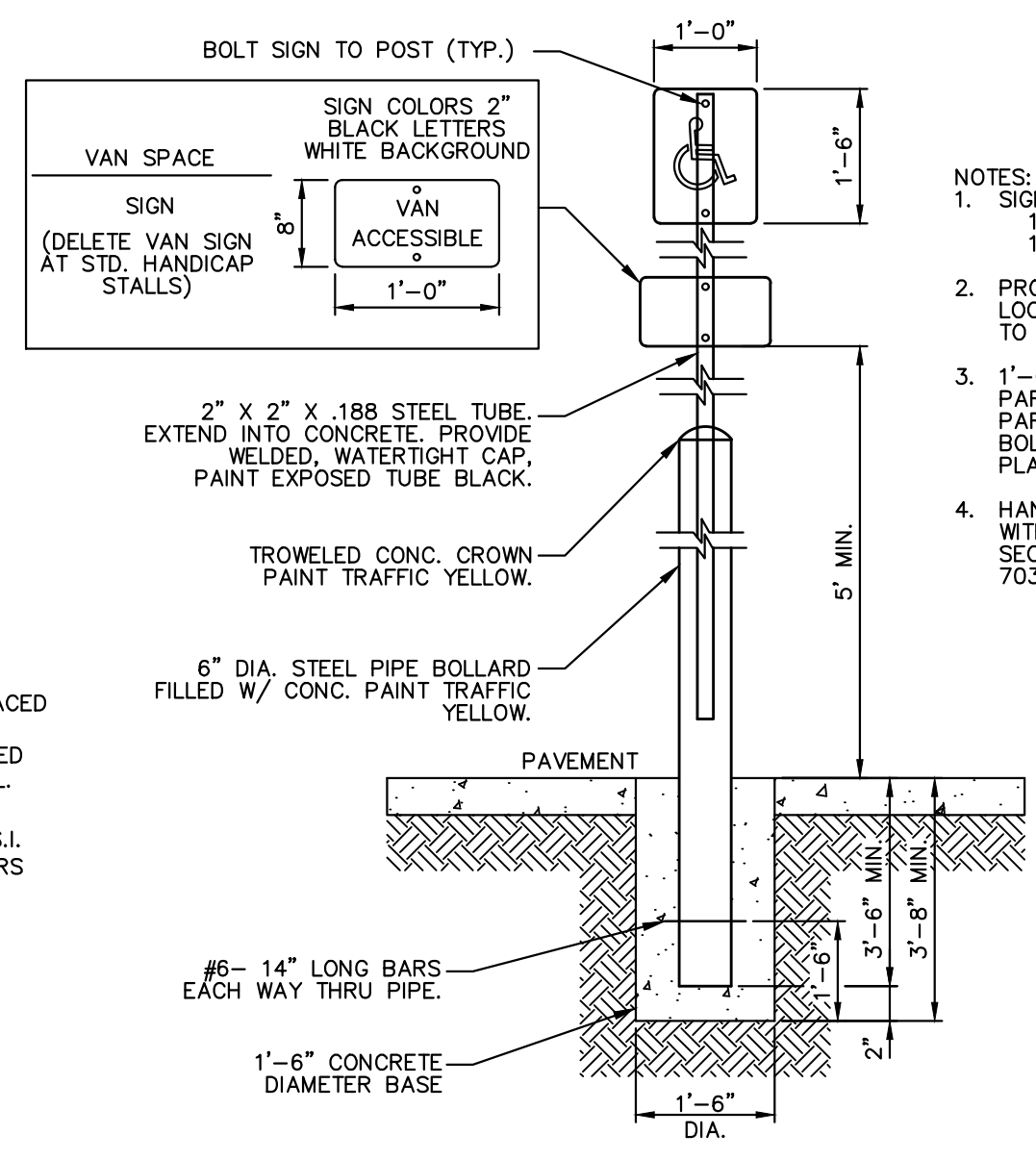


**ACCESS RAMP DETAIL**  
 N.T.S.

- NOTES:**
- ALL HANDICAPPED SIGNAGE AND MARKINGS TO BE IN ACCORDANCE WITH FEDERAL STATE AND LOCAL REGULATIONS.
  - MAXIMUM SLOPE FOR HANDICAPPED ACCESSIBLE PATHS ARE 5% WITH A MAXIMUM CROSS FALL SLOPE OF 2%. THE FIRST FIVE FEET FROM THE DOOR IS NOT TO EXCEED 2% IN ANY DIRECTION.
  - TAPERED CURB AND GUTTER SECTION. MAINTAIN GUTTER FLOWLINE AS REQUIRED.
  - RAMP SHALL BE CONSTRUCTED OF 4" THICK, 3000 PSI (MIN. 5.5 SACK MIX) CONCRETE WITH 6"x6" W2.9xW2.9 WELDED WIRE REINF.

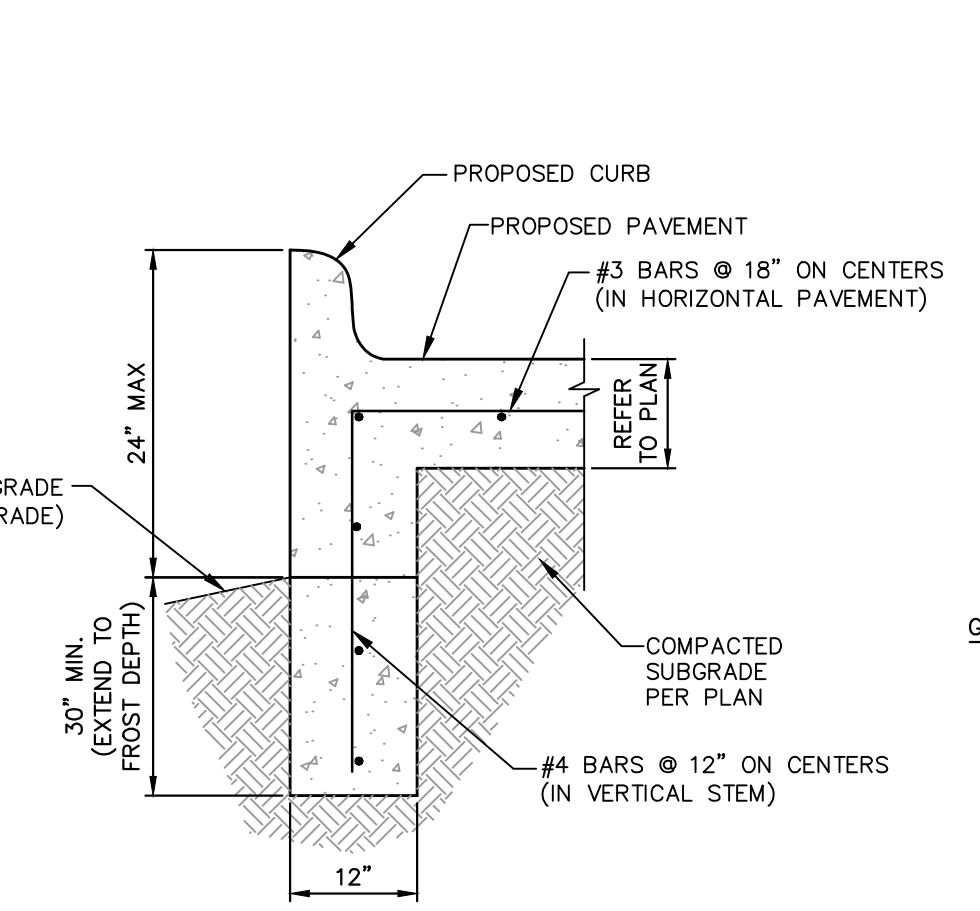


**TYPE B SAFETY RAIL W/ HANDRAIL**  
 N.T.S.

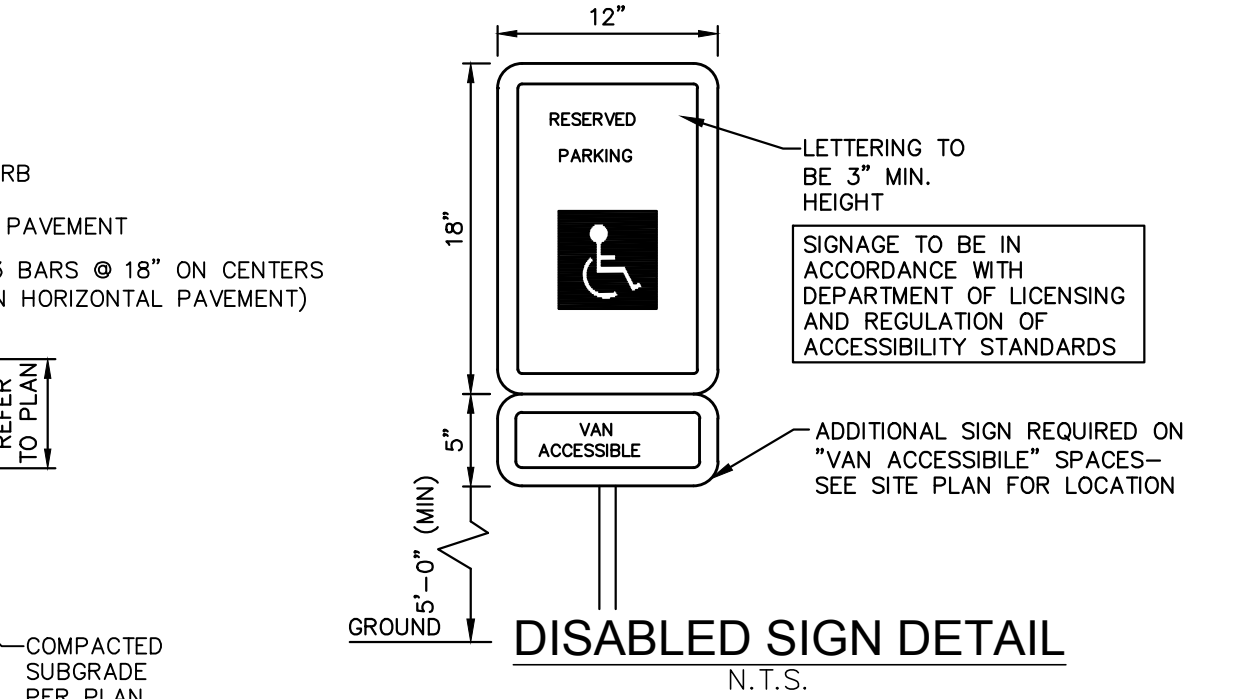


**"HANDICAPPED PARKING" SIGN POST DETAIL**  
 N.T.S.

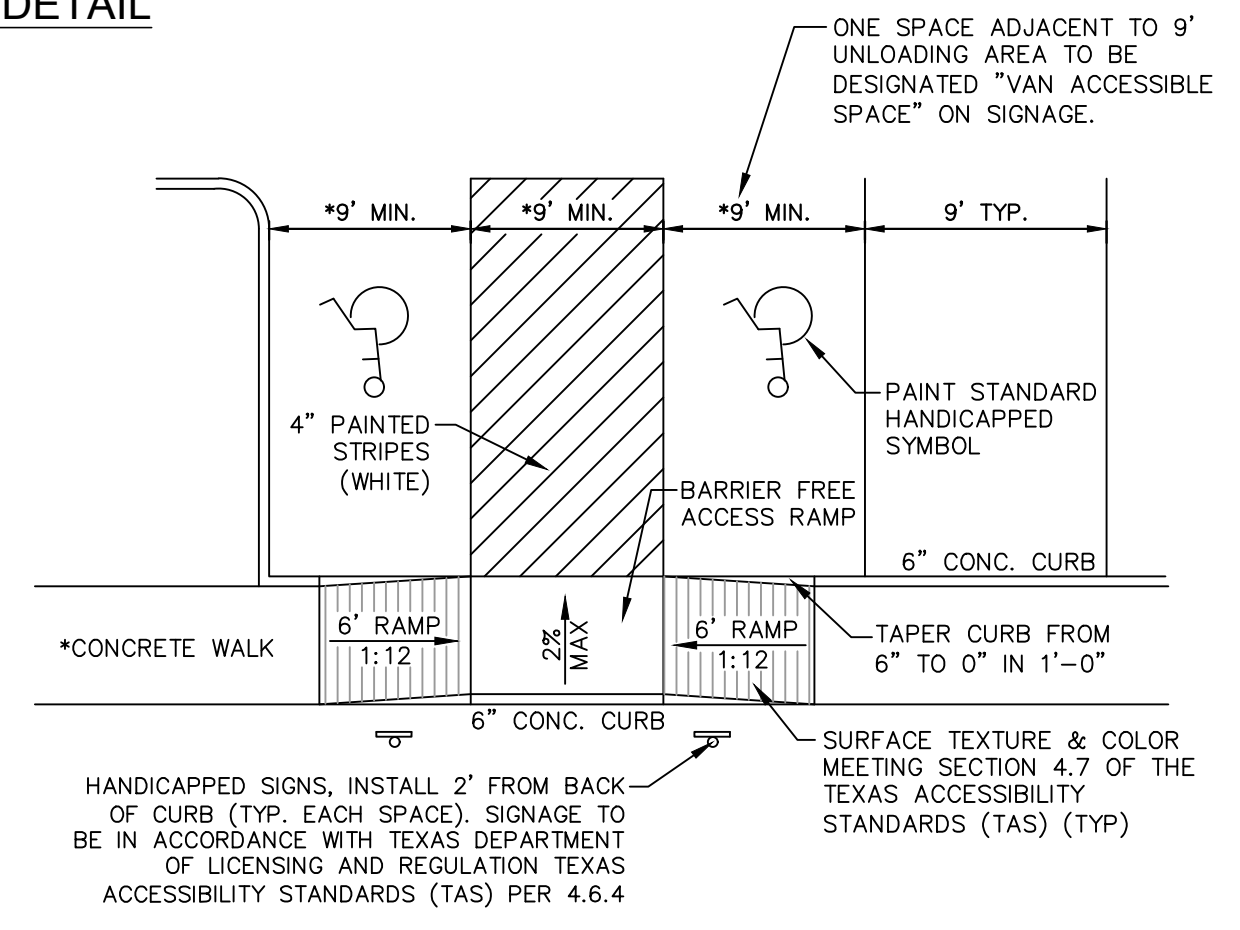
- NOTES:**
- SIGN COLORS  
 1.1. BACKGROUND: WHITE  
 1.2. SYMBOL: BLUE
  - PROVIDE SIGNAGE AT END OF STALL AT LOCATIONS W/ ACCESSIBLE DESIGNATION TO ACT AS BUMPER STOP.
  - 1'-0"x1'-6", 080" ALUM. HANDICAPPED PARKING SIGN TO READ "RESERVED PARKING" W/ IDENTIFICATION SYMBOL. BOLT TO STEEL TUBE W/ 3/8" CADMIUM PLATED BOLTS, NUTS & WASHERS.
  - HANDICAP SIGNAGE TO BE IN ACCORDANCE WITH CURRENT 2012 TAS STANDARDS, SECTION 502.6, ALONG WITH SECTIONS 703.5, 703.6 AND 703.7.



**DROP CURB WALL DETAIL**  
 N.T.S.



**DISABLED SIGN DETAIL**  
 N.T.S.



**HANDICAP PARKING & ACCESS RAMP DETAIL**  
 N.T.S.

- NOTES:**
- \* DIMENSIONS MAY VARY REFER TO DIMENSIONAL CONTROL PLAN
  - SIGNAGE AND MARKINGS TO BE IN ACCORDANCE WITH FEDERAL STATE AND LOCAL REGULATIONS.
  - MAXIMUM SLOPE FOR HANDICAPPED ACCESSIBLE PATHS ARE 5% WITH A MAXIMUM CROSS FALL SLOPE OF 2%. THE FIRST FIVE FEET FROM THE DOOR IS NOT TO EXCEED 2% IN ANY DIRECTION.

This drawing has been revised to show those changes during the construction process reported by the contractor to Clay Moore Engineering, Inc. and considered to be significant. This drawing is not guaranteed to be "As Built" but is based on the information made available.  
 By: *Matt Hill* Date: 11/16/2017

PLOTTED BY: JVALDEZ 11/16/2017 2:08 PM  
 PLOT DATE: 11/16/2017 2:08 PM  
 LOCATION: C:\EGN\IT\SHARED\PROJECTS\2016-029\_CRESTVIEW\_ROCKWALL\CADD\SHEETS\C-10\_CONSTRUCTION\_DETAILS.DWG  
 LAST SAVED: 11/16/2017 2:07 PM