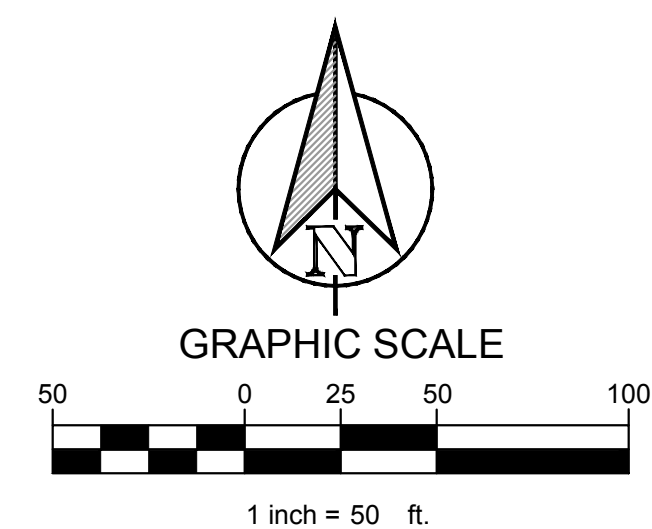


No.	DATE	REVISION	BY

**PROPOSED DRAINAGE AREA MAP**

DESIGN:	JEV
DRAWN:	JEV
CHECKED:	CLC
DATE:	04/03/2017

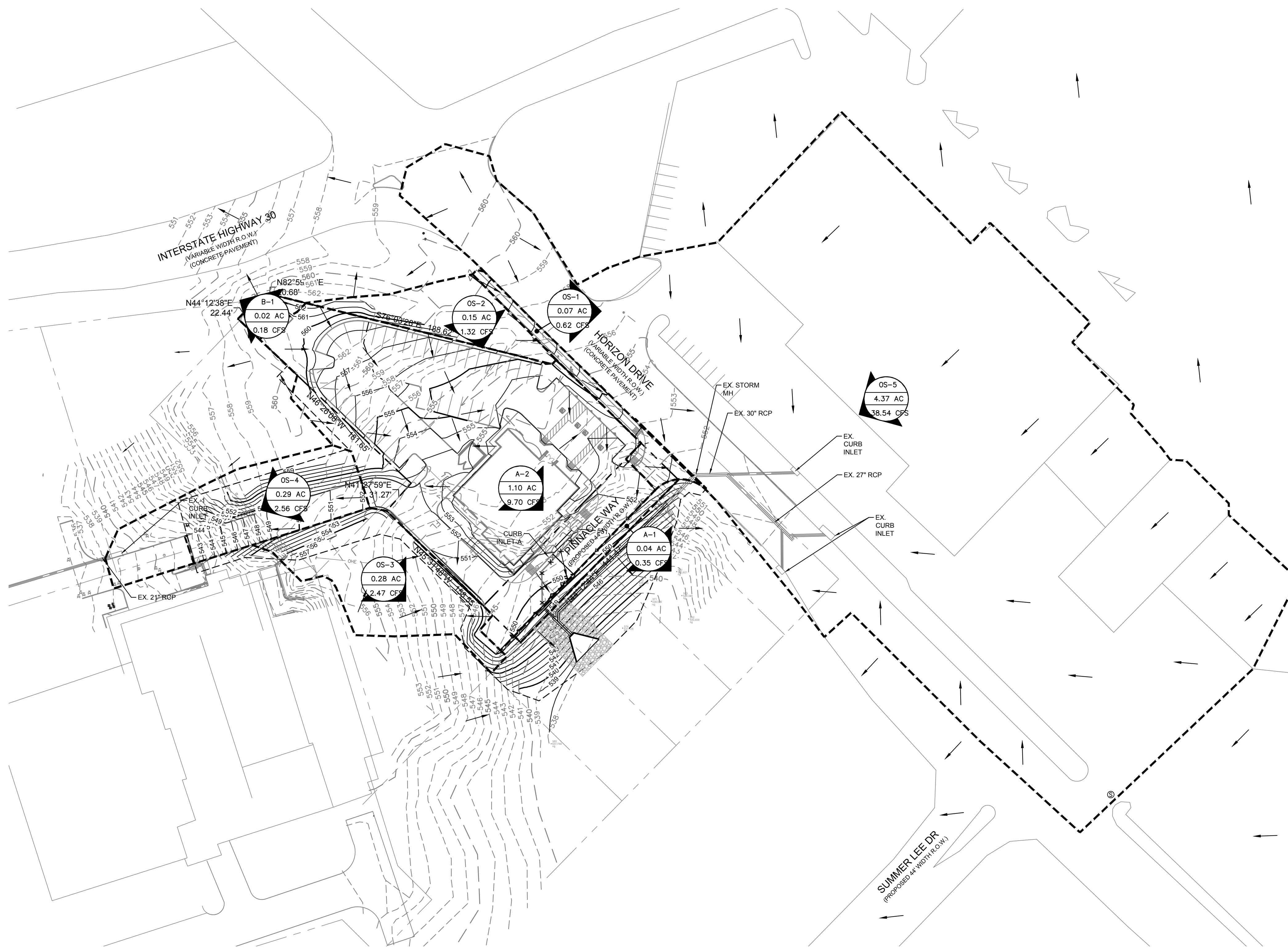
SHEET  
**C-10**



LEGEND	
	- DRAINAGE AREA - DRAINAGE AREA IN ACRES - FLOW FOR DRAINAGE AREA IN CFS
	DIRECTION OF FLOW
	DRAINAGE AREA BOUNDARY

HYDROLOGIC CALCULATIONS - POST DEVELOPMENT						
DRAINAGE AREA	AREA (AC.)	TC (MIN)	C	I <sub>100</sub> (IN/HR)	Q <sub>100</sub> (CFS)	COLLECTION POINT
A-1	0.04	10	0.90	9.80	0.35	DRAINS OFF SITE TOWARDS EAST
A-2	1.10	10	0.90	9.80	9.70	DRAINS TO PROPOSED CURB INLET
B-1	0.02	10	0.90	9.80	0.18	DRAINS TOWARDS H 30
OS-1	0.07	10	0.90	9.80	0.62	DRAINS TO HORIZON DRIVE
OS-2	0.15	10	0.90	9.80	1.32	DRAINS TO PROPOSED CURB INLET
OS-3	0.28	10	0.90	9.80	2.47	DRAINS OFF SITE TOWARDS EAST
OS-4	0.29	10	0.90	9.80	2.56	DRAINS EX CURB INLET
OS-5*	4.37	10	0.90	9.80	38.54	DRAINS EX CURB INLET
<b>TOTAL DRAINAGE</b>	<b>6.32</b>				<b>55.74</b>	

\*OS-1 Area based off of asbuilt drawings by Harold Evan Consulting Engineers dated 8/16/1984 and existing contour data from city. Drainage areas are approximate.



This drawing has been revised to show those changes during the construction process reported by the contractor to ClayMoore Engineering, Inc. and considered to be significant. This drawing is not guaranteed to be "As Built" but is based on the information made available.  
 By: *Matt JEV* Date: 11/16/2017

**BENCH MARKS**  
 BENCH MARK NO. 6-1  
 CONCRETE MONUMENT WITH BRASS CAP AT THE  
 SOUTHWEST CORNER OF MARINA AND VILLAGE ROAD  
 ELEV: 506.05  
 BENCH MARK NO. RESET 1  
 AT THE WEST END OF SUMMER LEE AND WEST OF FM 740.  
 ELEV: 567.70

PLOTTED BY: JVALDEZ  
 11/16/2017 1:37 PM  
 PLOT DATE:  
 LOCATION: C:\EGNTITE\SHARED\PROJECTS\2016-029 CRESTVIEW ROCKWALL\CADD\SHEETS\C-8 PROPOSED DRAINAGE AREA MAP.DWG  
 LAST SAVED: 11/16/2017 1:37 PM