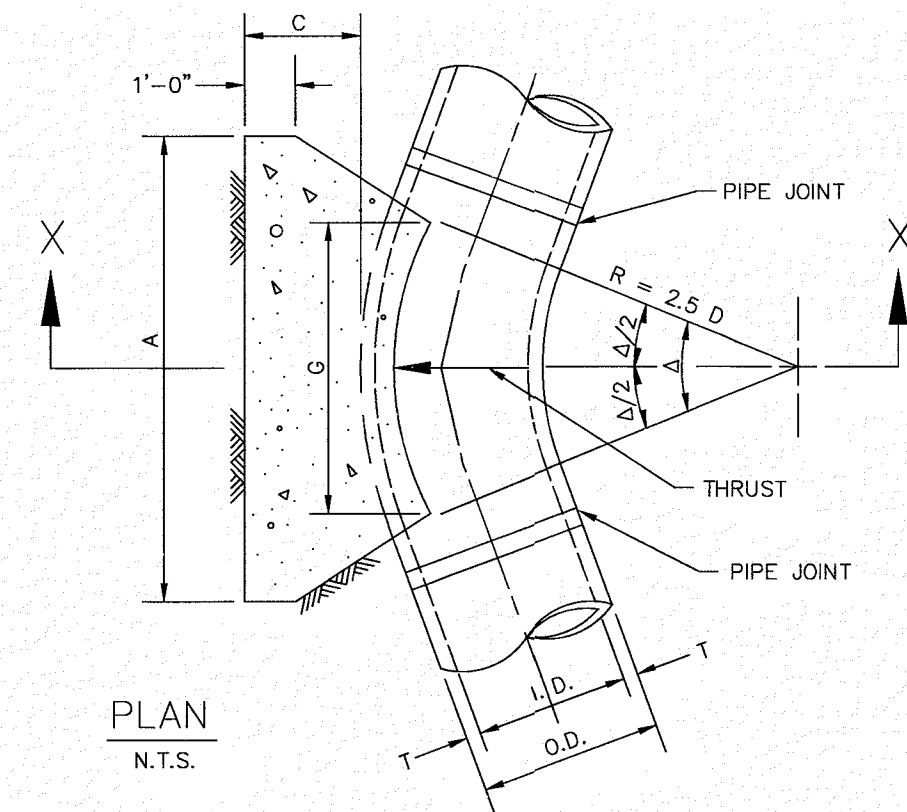
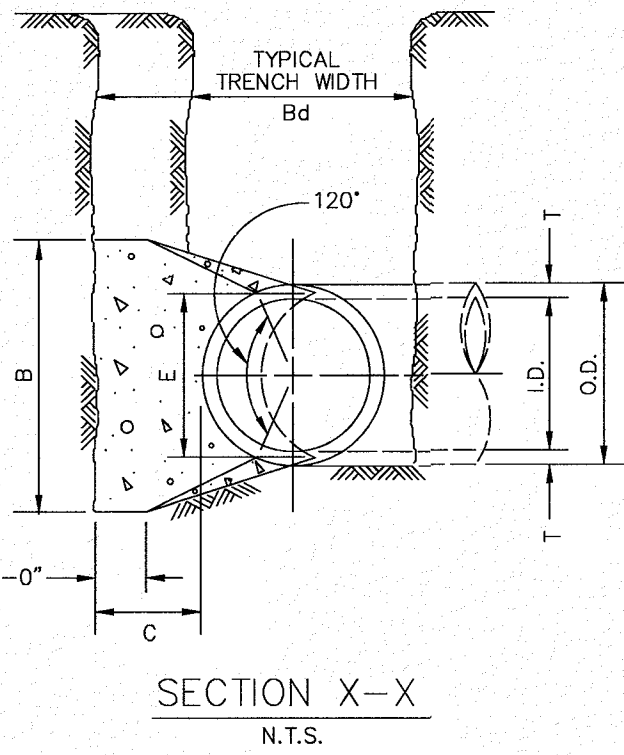


GENERAL NOTES FOR ALL THRUST BLOCKS:

- 1. CONCRETE FOR BLOCKING SHALL BE CLASS "B".
2. ALL CALCULATIONS ARE BASED ON INTERNAL PRESSURE OF 200 PSI FOR DUCTILE IRON, P.V.C., AND 150 PSI FOR CONCRETE PIPE.
3. VOLUMES OF THRUST BLOCKS ARE NET VOLUMES OF CONCRETE TO BE FURNISHED. THE CORRESPONDING WEIGHT OF THE CONCRETE (CLASS "B") IS EQUAL TO OR GREATER THAN THE VERTICAL COMPONENT OF THE THRUST ON THE VERTICAL BEND.
4. WALL THICKNESS (T) ASSUMED HERE FOR ESTIMATING PURPOSES ONLY.
5. POUR CONCRETE FOR BLOCK AGAINST UNDISTURBED EARTH.
6. DIMENSIONS MAY BE VARIED AS REQUIRED BY FIELD CONDITIONS WHERE AND AS DIRECTED BY THE ENGINEER. THE VOLUME OF CONCRETE BLOCKING SHALL NOT BE LESS THAN SHOWN HERE.
7. THE SOIL BEARING PRESSURES ARE BASED ON 1000 LBS./S.F. IN SOIL AND 2000 LBS./S.F. IN ROCK.
8. USE POLYETHYLENE WRAP OR EQUAL BETWEEN CONCRETE AND BEND, TEE, OR PLUG TO PREVENT THE CONCRETE FROM STICKING TO IT.
9. CONCRETE SHALL NOT EXTEND BEYOND JOINTS.



REFER TO STD. DWG. No. 4040 FOR GENERAL NOTES.



THRUST BLOCK GENERAL NOTES

North Central Texas Council of Governments logo and STANDARD SPECIFICATION REFERENCE 502.4, DATE OCT. '04, STANDARD DRAWING NO. 4040.

HORIZONTAL THRUST BLOCK AT PIPE BEND

North Central Texas Council of Governments logo and STANDARD SPECIFICATION REFERENCE 502.4, DATE OCT. '04, STANDARD DRAWING NO. 4010A.

Table of dimensions and quantities for horizontal thrust block at pipe bend. Columns include I.D., G, THRUST, A, B, VOL., EARTH, ROCK for angles 11.25, 22.50, 30, 45, 67.50, 90.

TABLES OF DIMENSIONS AND QUANTITIES

HORIZONTAL THRUST BLOCK AT PIPE BEND

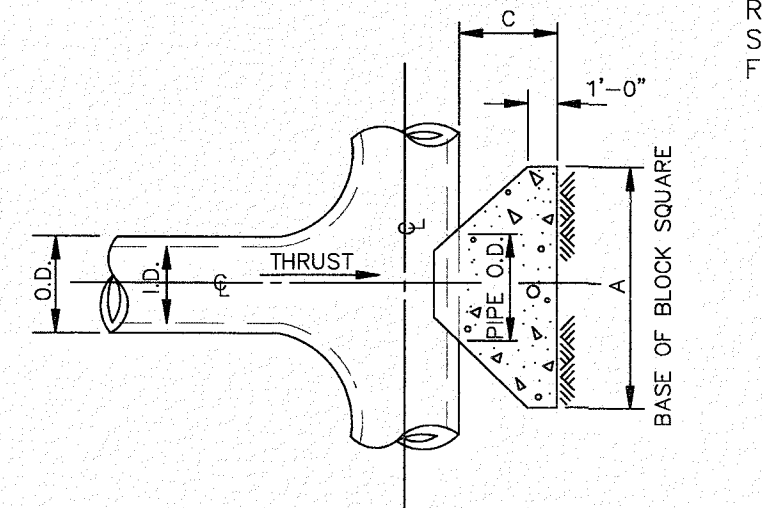
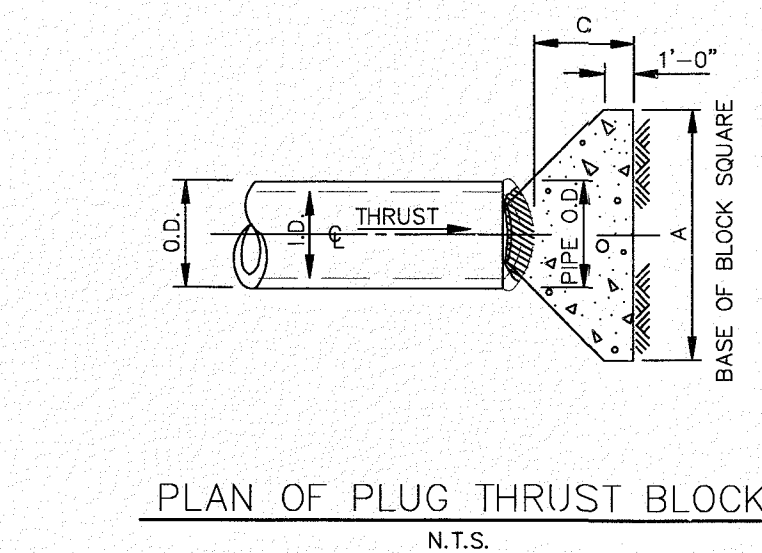
North Central Texas Council of Governments logo and STANDARD SPECIFICATION REFERENCE 502.4, DATE NOV. '96, STANDARD DRAWING NO. 4010B.

Table of dimensions and quantities for horizontal thrust block at pipe bend. Columns include I.D., G, THRUST, A, B, VOL., EARTH, ROCK for angles 30, 45, 67.50, 90.

TABLES OF DIMENSIONS AND QUANTITIES

HORIZONTAL THRUST BLOCK AT PIPE BEND

North Central Texas Council of Governments logo and STANDARD SPECIFICATION REFERENCE 502.4, DATE NOV. '96, STANDARD DRAWING NO. 4010C.

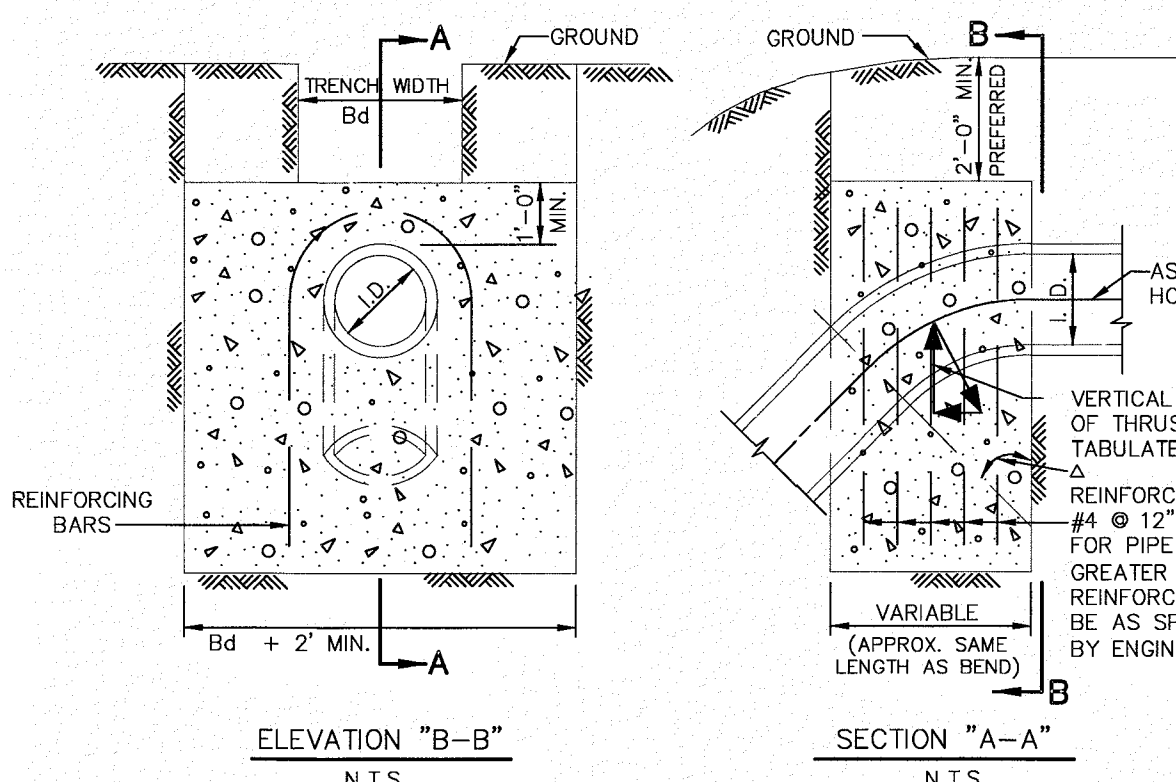


PLAN OF TEE THRUST BLOCK N.T.S.

Table of dimensions and quantities for tee thrust block. Columns include I.D., THRUST, C, A, B, VOL., EARTH, ROCK for angles 11.25 to 90.

HORIZONTAL THRUST BLOCK AT TEES AND PLUGS

North Central Texas Council of Governments logo and STANDARD SPECIFICATION REFERENCE 502.4, DATE OCT. '04, STANDARD DRAWING NO. 4020.



REFER TO STD. DWG. No. 4040 FOR GENERAL NOTES.

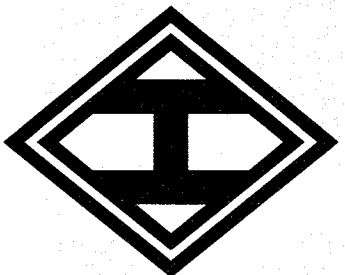
Table of dimensions and quantities for vertical thrust block. Columns include I.D., THRUST, VOL., THRUST, VOL., THRUST, VOL., THRUST, VOL., THRUST, VOL., I.D. for angles 11.25, 22.50, 30, 45, 67.50, 90.

VERTICAL THRUST BLOCK AT PIPE BEND

North Central Texas Council of Governments logo and STANDARD SPECIFICATION REFERENCE 502.4, DATE OCT. '04, STANDARD DRAWING NO. 4030.

NOTE NO CITY REVISIONS REQUIRED BASED ON TABLE 9.4 FROM THE CITY OF ROCKWALL STANDARDS OF DESIGN AND CONSTRUCTION

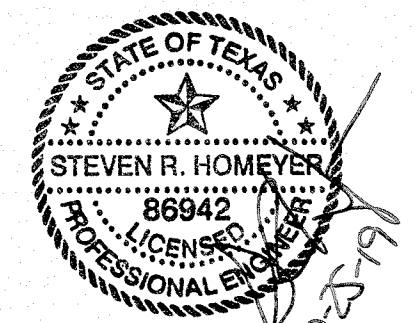
HOMEMEYER ENGINEERING, INC. ENGINEERING REGISTRATION NO. F-8440. T&BE FIRM REGISTRATION NO. F-8440. P.O. BOX 294527 • LEWISVILLE, TEXAS 75029 972-906-9985 PHONE • 972-906-9987 FAX WWW.HEI.US.COM



CANINE AND CO. RESORT 1.21 ACRES CITY OF ROCKWALL ROCKWALL COUNTY, TEXAS

WATER DETAILS

DRAWN: JAN DATE: 09/28/2018 HEI #: 18-140 SHEET NO: C10



CASE NO. SP2019-017