

LEGEND

CIRF 5/8" IRF WITH CAP STAMPED BURY+PARTNERS FOUND

CIRS 5/8" IRF WITH CAP STAMPED BURY+PARTNERS SET

DRDCT DEED RECORDS OF ROCKWALL COUNTY TEXAS

PRDCT PLAT RECORDS OF ROCKWALL COUNTY TEXAS

(CM) CONTROL MONUMENT

CURVE TABLE

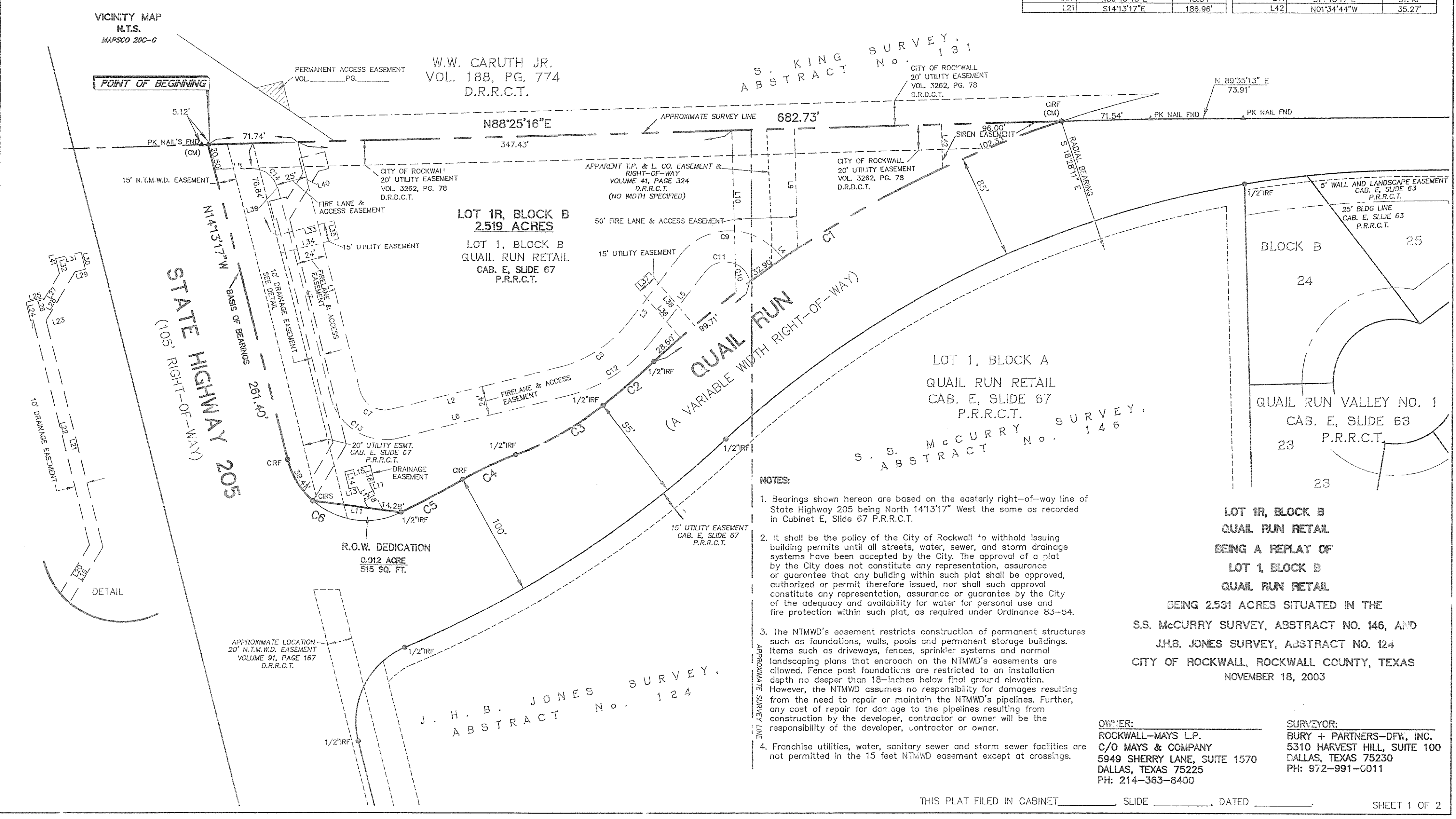
CURVE	DELTA	RADIUS	LENGTH	CH. BRG.	CH. DIST.
C1	24°29'46"	897.50	391.58	S59°16'55"W	378.68
C2	3°48'28"	807.50	53.65	N48°56'16"E	53.65
C3	19°16'02"	239.50	80.54	N60°28'32"E	80.16
C4	10°15'11"	260.50	46.62	S64°58'58"W	46.55
C5	4°03'09"	757.50	56.03	N81°52'57"E	56.04
C6	10°15'21"	64.50	114.68	S39°09'23"E	100.16
C7	90°00'00"	20.50	32.20	S59°13'17"E	28.99
C8	38°13'51"	100.50	67.06	N56°39'47"E	65.82
C9	97°31'57"	49.50	84.26	S86°18'50"W	74.45
C10	33°45'16"	20.50	12.08	N27°32'31"W	11.90
C11	95°47'45"	20.50	34.22	S89°21'44"W	30.38
C12	38°13'51"	124.50	83.07	N56°39'47"E	81.54
C13	90°00'00"	45.00	70.69	S59°13'17"E	63.64
C14	77°21'52"	20.00	27.01	N52°54'01"W	25.00

LINE TABLE

LINE	BEARING	LENGTH
L1	N14°13'17"W	125.08'
L2	S75°46'43"W	139.14'
L3	S37°32'52"W	68.13'
L4	N44°55'12"W	11.00'
L5	S37°32'52"W	68.90'
L6	S75°46'43"W	138.64'
L7	N14°13'17"W	174.58'
L8	S89°20'26"W	30.22'
L9	N01°34'44"W	97.06'
L10	N01°34'44"W	130.70'
L11	N82°39'40"W	71.07'
L12	S27°54'17"E	19.13'
L13	N75°46'43"E	6.57'
L14	S14°13'17"E	14.00'
L15	S75°46'43"W	21.00'
L16	N14°13'17"W	14.00'
L17	N75°46'43"E	4.14'
L18	N27°54'17"W	23.76'
L19	S30°46'43"W	52.08'
L20	N30°46'43"E	45.34'
L21	S14°13'17"E	186.96'

LINE TABLE

LINE	BEARING	LENGTH
L22	N14°13'17"W	185.83'
L23	S75°46'43"W	2.00'
L24	N14°13'17"W	15.00'
L25	N75°46'43"E	14.00'
L26	S14°13'17"E	1.86'
L27	N30°46'43"E	24.75'
L28	S30°46'43"W	45.36'
L29	S75°46'43"W	8.43'
L30	S14°13'17"E	14.00'
L31	N75°46'43"E	21.00'
L32	N14°13'17"W	12.43'
L33	N75°46'43"E	47.58'
L34	S75°46'43"W	47.58'
L35	S14°13'17"E	15.00'
L36	N49°38'55"W	56.01'
L37	N°81°51'22"E	15.00'
L38	S40°38'55"E	56.29'
L39	S75°46'43"W	0.49'
L40	S75°46'43"W	0.51'
L41	S14°13'17"E	31.40'
L42	N01°34'44"W	35.27'



- NOTES:**
- Bearings shown hereon are based on the easterly right-of-way line of State Highway 205 being North 14°13'17" West the same as recorded in Cabinet E, Slide 67 P.R.R.C.T.
 - It shall be the policy of the City of Rockwall to withhold issuing building permits until all streets, water, sewer, and storm drainage systems have been accepted by the City. The approval of a plat by the City does not constitute any representation, assurance or guarantee that any building within such plot shall be approved, authorized or permit therefore issued, nor shall such approval constitute any representation, assurance or guarantee by the City of the adequacy and availability for water for personal use and fire protection within such plot, as required under Ordinance 83-54.
 - The NTMWD's easement restricts construction of permanent structures such as foundations, walls, pools and permanent storage buildings. Items such as driveways, fences, sprinkler systems and normal landscaping plans that encroach on the NTMWD's easements are allowed. Fence post foundations are restricted to an installation depth no deeper than 18-inches below final ground elevation. However, the NTMWD assumes no responsibility for damages resulting from the need to repair or maintain the NTMWD's pipelines. Further, any cost of repair for damage to the pipelines resulting from construction by the developer, contractor or owner will be the responsibility of the developer, contractor or owner.
 - Franchise utilities, water, sanitary sewer and storm sewer facilities are not permitted in the 15 feet NTMWD easement except at crossings.

**LOT 1R, BLOCK B
QUAIL RUN RETAIL
BEING A REPLAT OF
LOT 1, BLOCK B
QUAIL RUN RETAIL
BEING 2.531 ACRES SITUATED IN THE
S.S. McCURRY SURVEY, ABSTRACT NO. 146, AND
J.H.B. JONES SURVEY, ABSTRACT NO. 124
CITY OF ROCKWALL, ROCKWALL COUNTY, TEXAS
NOVEMBER 18, 2003**

OWNER:
ROCKWALL-MAYS L.P.
C/O MAYS & COMPANY
5949 SHERRY LANE, SUITE 1570
DALLAS, TEXAS 75225
PH: 214-363-8400

SURVEYOR:
BURY + PARTNERS-DFW, INC.
5310 HARVEST HILL, SUITE 100
DALLAS, TEXAS 75230
PH: 972-991-0011