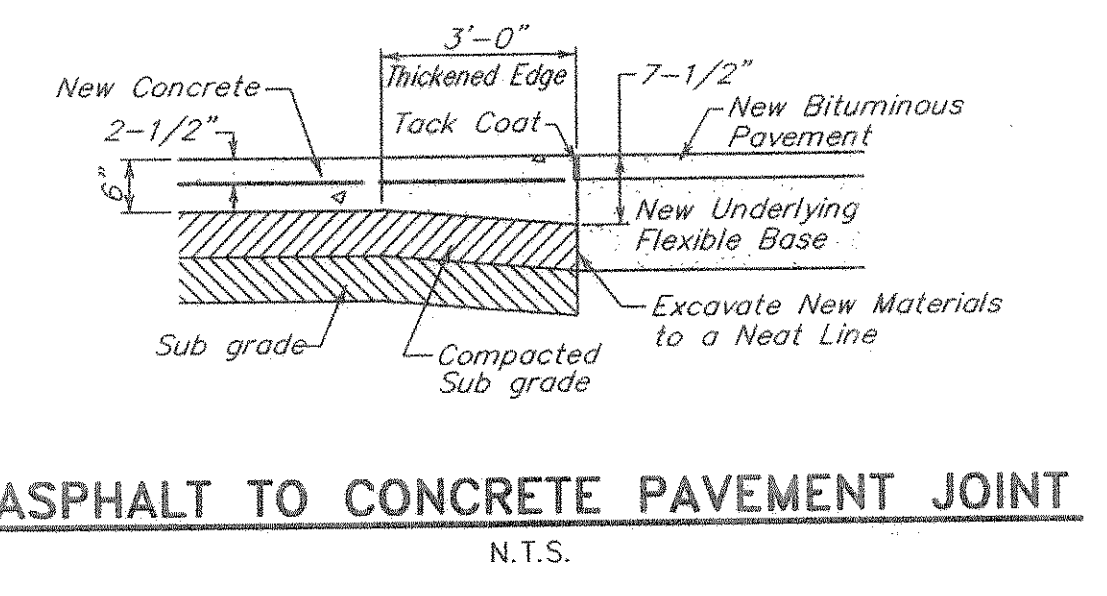
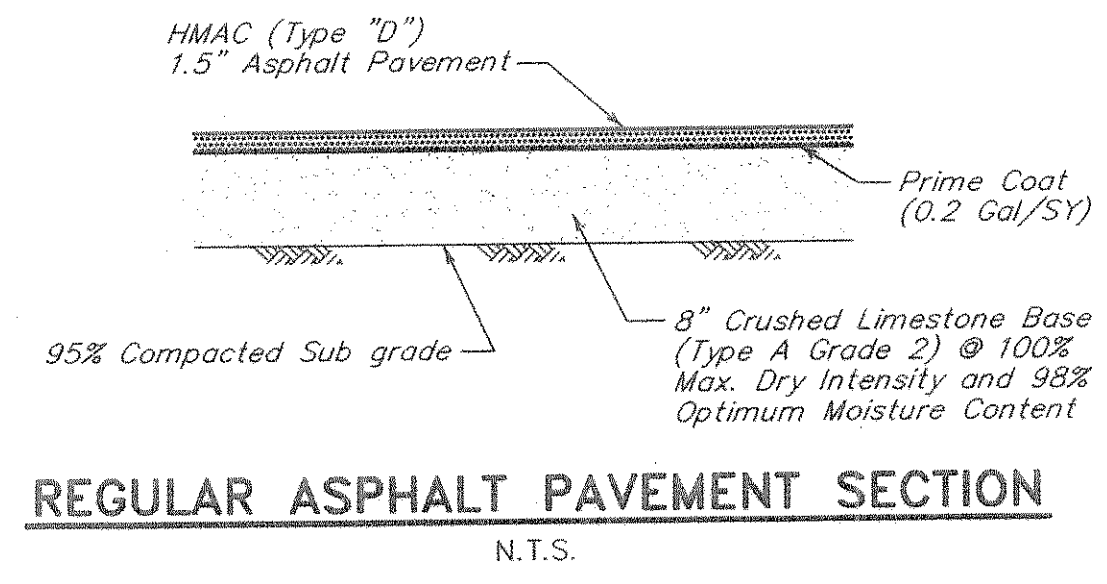
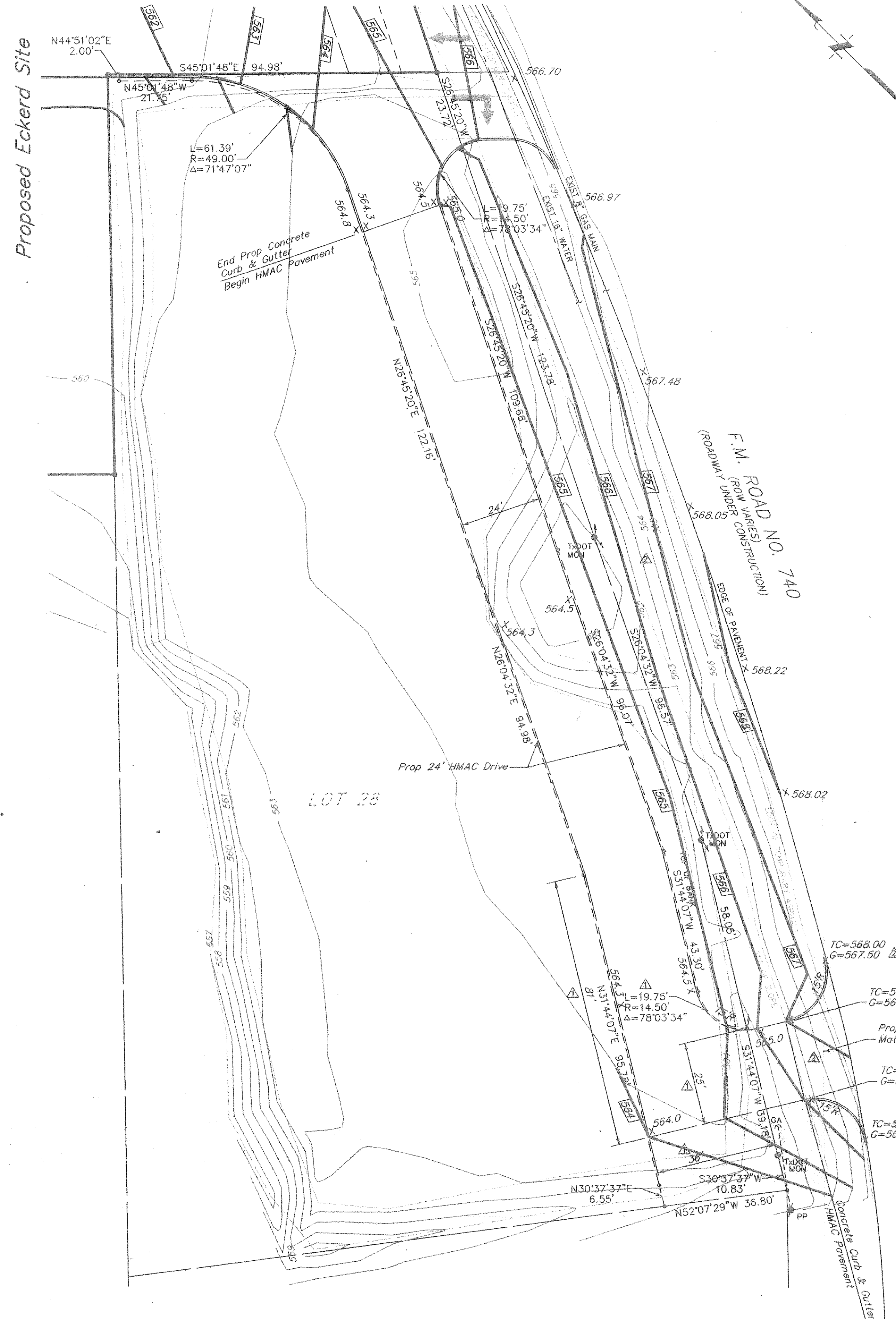


See Sheet 6



**RECORD  
DRAWING**

NO.	DATE	REVISIONS	APP.
1	12/23/97	REVISED DRIVE LOCATION AND GRADES	TMS
2	12/15/97	LOCATED AND ADDED DIMENSIONS TO ACCESS EASEMENT DRIVE	TMS

CNL DEVELOPMENT  
ORLANDO, FLORIDA

ECKERD DRUGSTORE No. 2659R  
ROCKWALL, TEXAS

**CROSS ACCESS DRIVE**

**JC JONES & CARTER, INC.**  
Consulting Engineers  
12000 Ford Rd., Suite 180 Dallas, Texas 75224 (972) 482-2800

SCALE: 1"=20' DGN. BY: BPW  
DATE: AUGUST 1997 DWN. BY: GSH  
JOB NO. D0014-003 DWG. NO. D0014-072

STATE OF TEXAS  
REGISTERED PROFESSIONAL ENGINEER  
THOMAS M. STROH  
81145  
1-14-98  
SHEET NO. 13 OF 15