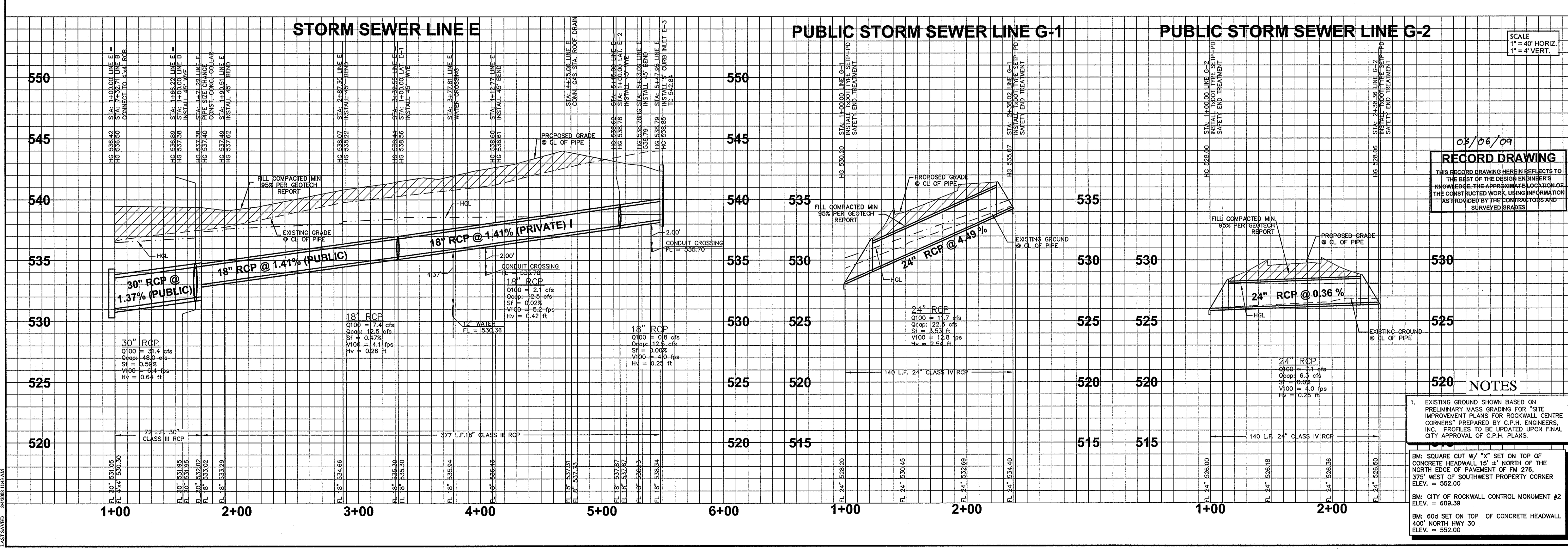
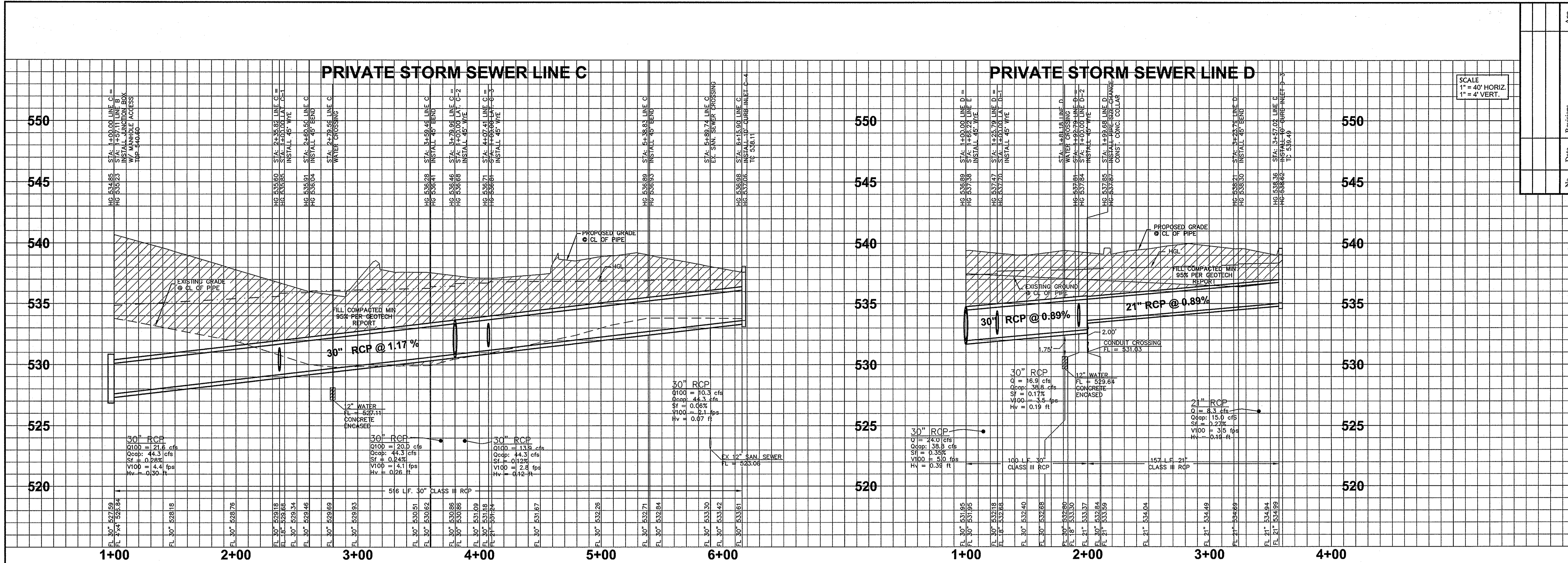


DATE: 08/14/2008
 DESIGNED BY: KFD
 DRAWN BY: KFD
 CHECKED BY: DXK
 DATE: August 14, 2008
 PROJECT NO: 66690025



RECORD DRAWING
 THIS RECORD DRAWING HEREIN REFLECTS TO THE BEST OF THE DESIGN ENGINEER'S KNOWLEDGE, THE APPROXIMATE LOCATION OF THE CONSTRUCTED WORK, USING INFORMATION AS PROVIDED BY THE CONTRACTORS AND SURVEYED GRADES.

03/06/09

NOTES

- EXISTING GROUND SHOWN BASED ON PRELIMINARY MASS GRADING FOR "SITE IMPROVEMENT PLANS FOR ROCKWALL CENTRE CORNERS" PREPARED BY C.P.H. ENGINEERS, INC. PROFILES TO BE UPDATED UPON FINAL CITY APPROVAL OF C.P.H. PLANS.

BM: SQUARE CUT W/ "X" SET ON TOP OF CONCRETE HEADWALL 15' ± NORTH OF THE NORTH EDGE OF PAVEMENT OF FM 276, 375' WEST OF SOUTHWEST PROPERTY CORNER ELEV. = 552.00

BM: CITY OF ROCKWALL CONTROL MONUMENT #2 ELEV. = 609.39

BM: 60d SET ON TOP OF CONCRETE HEADWALL 400' NORTH HWY 30 ELEV. = 552.00

Kimley-Horn and Associates, Inc.
 5700 Genesis Court, Suite 200
 Frisco, Texas 75034
 Tel: No. (972) 335-3580
 Fax: No. (972) 335-3779

COSTCO WHOLESALE
 ROCKWALL, TEXAS

STORM SEWER PROFILES
 C D E G-1 & G-2

DESIGNED BY: KFD
 DRAWN BY: KFD
 CHECKED BY: DXK
 DATE: August 14, 2008
 PROJECT NO: 66690025

SHEET **C-10** OF 21