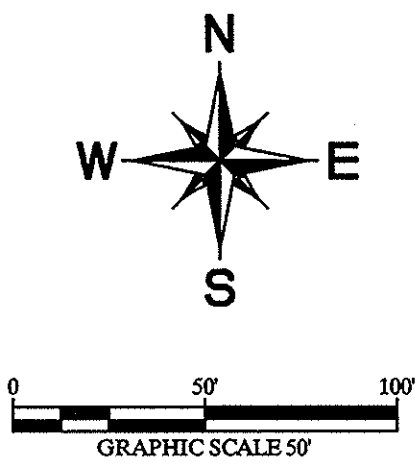
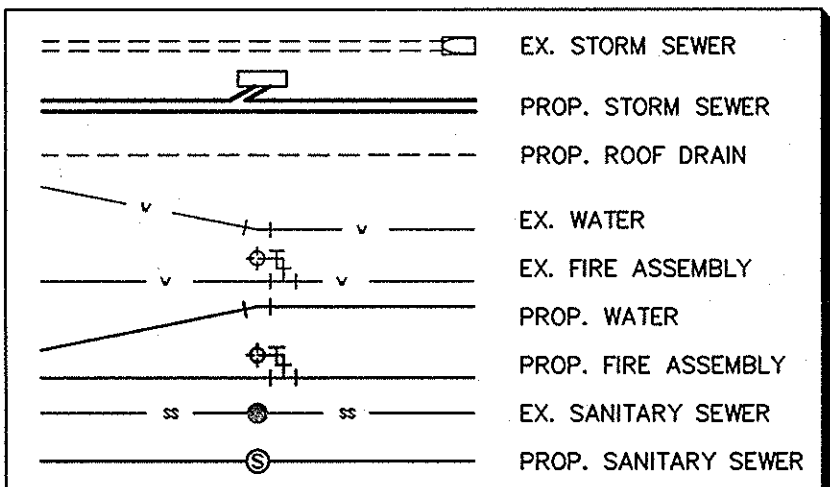


THE CONTRACTOR SHALL FIELD VERIFY THE HORIZONTAL AND VERTICAL LOCATIONS OF ALL EXISTING UTILITIES PRIOR TO START OF CONSTRUCTION AND SHALL NOTIFY THE CONSTRUCTION MANAGER AND ENGINEER OF ANY CONFLICTS DISCOVERED. CONTRACTOR IS RESPONSIBLE FOR PROTECTING EXISTING UTILITIES (SHOWN OR NOT SHOWN) WITHIN SCOPE OF CONSTRUCTION. IF ANY EXISTING UTILITIES ARE DAMAGED, THE CONTRACTOR SHALL REPLACE THEM AT HIS OWN EXPENSE. CALL 1-800-DIG-TESS AT LEAST 72 HOURS PRIOR TO COMMENCING CONSTRUCTION IN VICINITY.



LEGEND



NOTES

- 1. ALL ROOF DRAIN LINES SHALL BE MINIMUM 8" HDPE AND SHALL EXTEND TO A POINT 5' FROM THE BUILDING FACE AND 3' BELOW THE FINISHED FLOOR ELEVATION UNLESS OTHERWISE NOTED. SEE ARCHITECT'S PLANS FOR CONNECTION DETAILS.
- 2. SEE MEP AND ARCH. PLANS FOR ROOF DRAIN AND DOWNSPOUT CONNECTIONS INTO BUILDING.
- 3. FOR INFORMATION ON "BY OTHERS" REFER TO "SITE IMPROVEMENT PLANS FOR ROCKWALL CENTRE CORNERS" PREPARED BY C.P.H. ENGINEERS, INC.
- 4. EXISTING FLOODPLAIN LIMITS SHOWN TO BE REVISED PER SEPARATE FLOOD STUDY BY C.P.H. ENGINEERS, INC., WHICH HAS NOT YET BEEN APPROVED.
- 5. STORM LINE A FROM STA. 1+09.02 TO 1+80.00 AND STORM LINE B FROM STA. 1+16.00 TO 1+45.00 TO BE CONSTRUCTED "BY OTHERS". REFER TO STORM PROFILES FOR FLOW LINE CONNECTIONS.
- * CURB INLET AND OIL/WATER SEPARATOR SHALL CAPTURE AND TREAT RUNOFF FROM THE GAS PUMP AREA
- ** LANDSCAPE DRAIN SHALL BE NDS #900 9" SQUARE CATCH BASIN WITH NDS #900 3" SQUARE BLACK GRATE OR APPROVED EQUAL.

COSTCO
WHOLESALE

148K USA
FF 541.50

LOT 1
20.290 ACRES
(883,850 SF)

Kimley-Horn and Associates, Inc.
5750 Genesis Court, Suite 200
Frisco, Texas 75034
Tel. No. (972) 338-5880
Fax No. (972) 338-3779

DAVID K. KOCHALKA
78781
PROFESSIONAL ENGINEER
01/20/09

COSTCO
WHOLESALE
ROCKWALL, TEXAS

STORM SEWER PLAN

03/06/09

RECORD DRAWING

THIS RECORD DRAWING HEREIN REFLECTS TO THE BEST OF THE DESIGN ENGINEER'S KNOWLEDGE, THE APPROXIMATE LOCATION OF THE CONSTRUCTED WORK, USING INFORMATION AS PROVIDED BY THE CONTRACTORS AND SURVEYED GRADERS.

BM: SQUARE CUT W/ "X" SET ON TOP OF CONCRETE HEADWALL 15' N OF THE NORTH EDGE OF PAVEMENT OF FM 276, 375' WEST OF SOUTHWEST PROPERTY CORNER ELEV. = 609.39

BM: CITY OF ROCKWALL CONTROL MONUMENT #2 ELEV. = 609.39
BM: 60d SET ON TOP OF CONCRETE HEADWALL 400' NORTH HWY 30 ELEV. = 552.00

STATE HIGHWAY 276