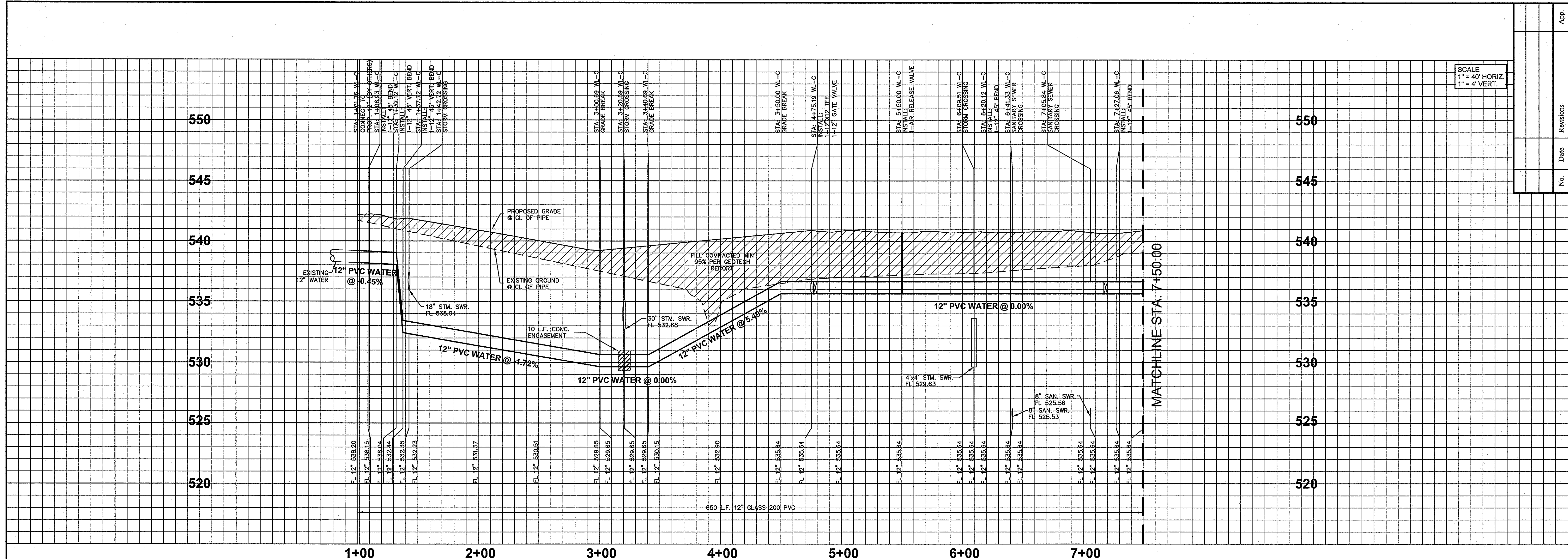
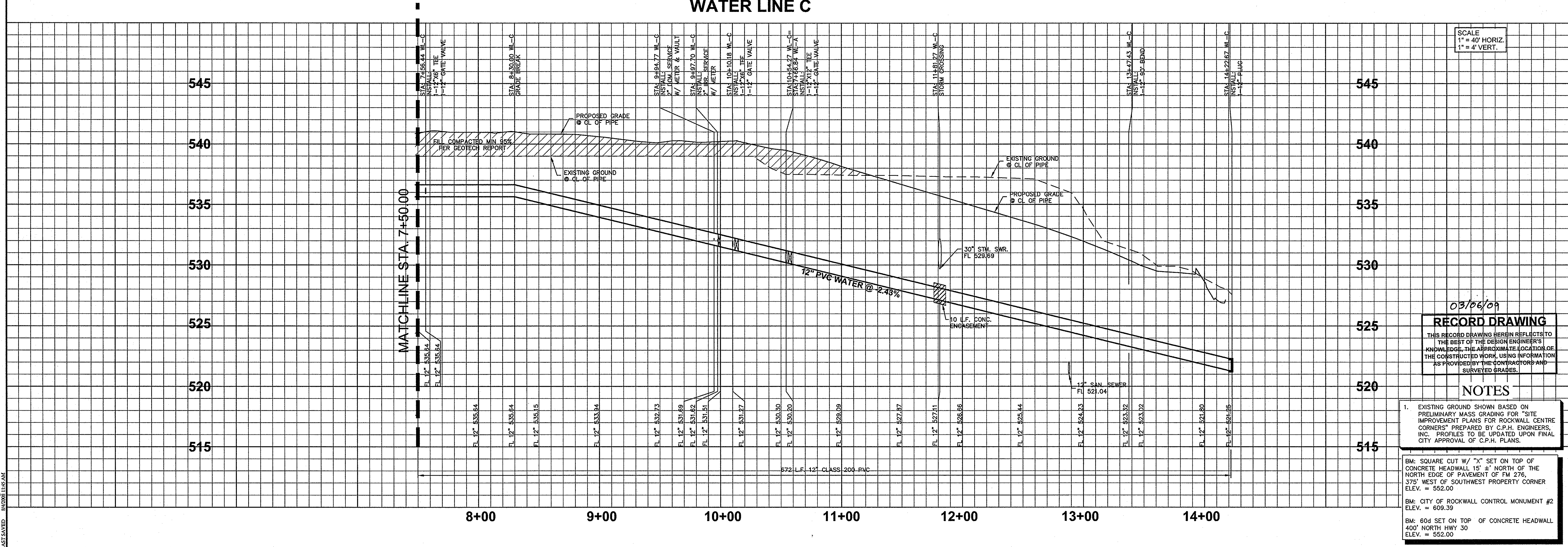
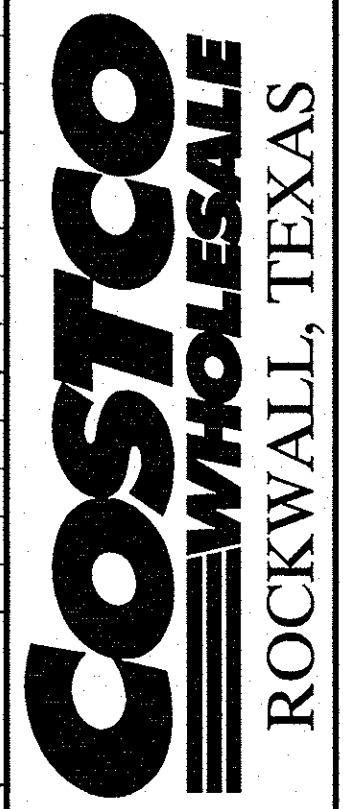
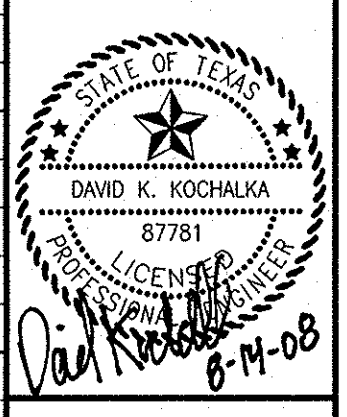
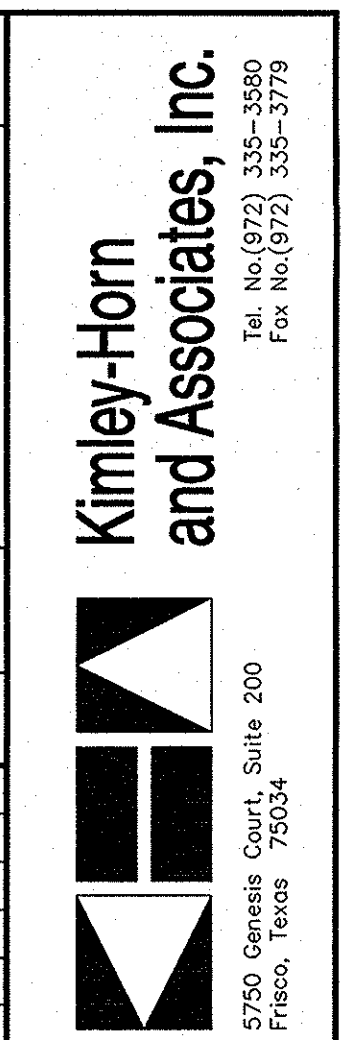


DATE PLOTTED: 08/14/2008 10:25:28 AM
DRAWN BY: J. COOPER
CHECKED BY: J. COOPER
PROJECT NO: 06600025
SHEET NO: C-13
DATE: AUGUST 14, 2008



SCALE
1" = 40' HORIZ
1" = 4' VERT.

No.	Date	Revisions	App.



SCALE
1" = 40' HORIZ
1" = 4' VERT.

03/06/09
RECORD DRAWING
THIS RECORD DRAWING HEREBY REFLECTS TO THE BEST OF THE DESIGN ENGINEER'S KNOWLEDGE, THE APPROXIMATE LOCATION OF THE CONSTRUCTED WORK, USING INFORMATION AS PROVIDED BY THE CONTRACTORS AND SURVEYED GRADES.

NOTES

- EXISTING GROUND SHOWN BASED ON PRELIMINARY MASS GRADING FOR "SITE IMPROVEMENT PLANS FOR ROCKWALL CENTRE CORNERS" PREPARED BY C.P.H. ENGINEERS, INC. PROFILES TO BE UPDATED UPON FINAL CITY APPROVAL OF C.P.H. PLANS.

BM: SQUARE CUT W/ "X" SET ON TOP OF CONCRETE HEADWALL 15' NORTH OF THE NORTH EDGE OF PAVEMENT OF FM 276, 375' WEST OF SOUTHWEST PROPERTY CORNER ELEV. = 552.00
BM: CITY OF ROCKWALL CONTROL MONUMENT #2 ELEV. = 609.39
BM: 60d SET ON TOP OF CONCRETE HEADWALL 400' NORTH HWY 30 ELEV. = 552.00

WATER LINE PROFILE

Scale	AS SHOWN
Designed by:	ROC
Drawn by:	ROC
Checked by:	DKK
Date:	August 14, 2008
Project No:	06600025

SHEET
C-13
OF 21