

NOTES:

- CONTRACTOR TO ADJUST LOCATION OF FORCE MAIN TO AVOID EXISTING PUBLIC AND PRIVATE UTILITIES AS NECESSARY.
- CONTRACTOR TO REPLACE ANY PAVEMENT, SIGNS, FENCES ETC. DAMAGED IN CONSTRUCTION AT OWN EXPENSE.
- CONTRACTOR TO USE MANUFACTURED BENDS AND PULL PIPE TO REQUIRED ALIGNMENT (NOT TO EXCEED MANUFACTURERS RECOMMENDATION). SEE TCEQ 217.67(j)
- CONTRACTOR IS RESPONSIBLE FOR TRAFFIC CONTROL AND SIGNAGE DURING ALL PHASES OF CONSTRUCTION.

LEGEND

- FM- FORCE MAIN
- TS- TRAFFIC SIGN
- FOC- FIBER OPTIC CABLE MARKER
- ICV- IRRIGATION CONTROL VALVE
- LP- LIGHT POLE
- WV- WATER VALVE
- PP- POWER POLE
- GW- GUY WIRE
- ELEC- ELECTRIC MARKER
- TEL- TELEPHONE MARKER
- ATT- ATT MARKER OR BOX
- SWB- TELEPHONE MARKER
- WL- WATER LINE
- RCP- REINFORCED CONCRETE PIPE
- RCB- REINFORCED CONCRETE BOX
- BC- BACK OF CURB

NOTE:

EXISTING UTILITIES SHOWN ARE A GRAPHICAL REPRESENTATION OF THE LOCATION BASED ON AS-BUILT DRAWINGS. ACTUAL LOCATION AND ELEVATION MAY BE DIFFERENT. CONTRACTOR MUST VERIFY ALL EXISTING UTILITIES FOR LOCATION AND ELEVATION PRIOR TO CONSTRUCTION.

NOTE:

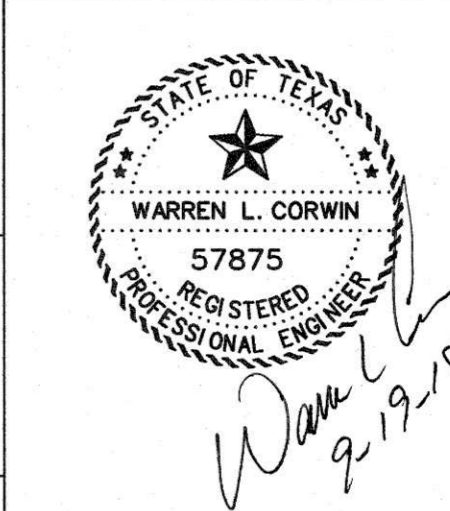
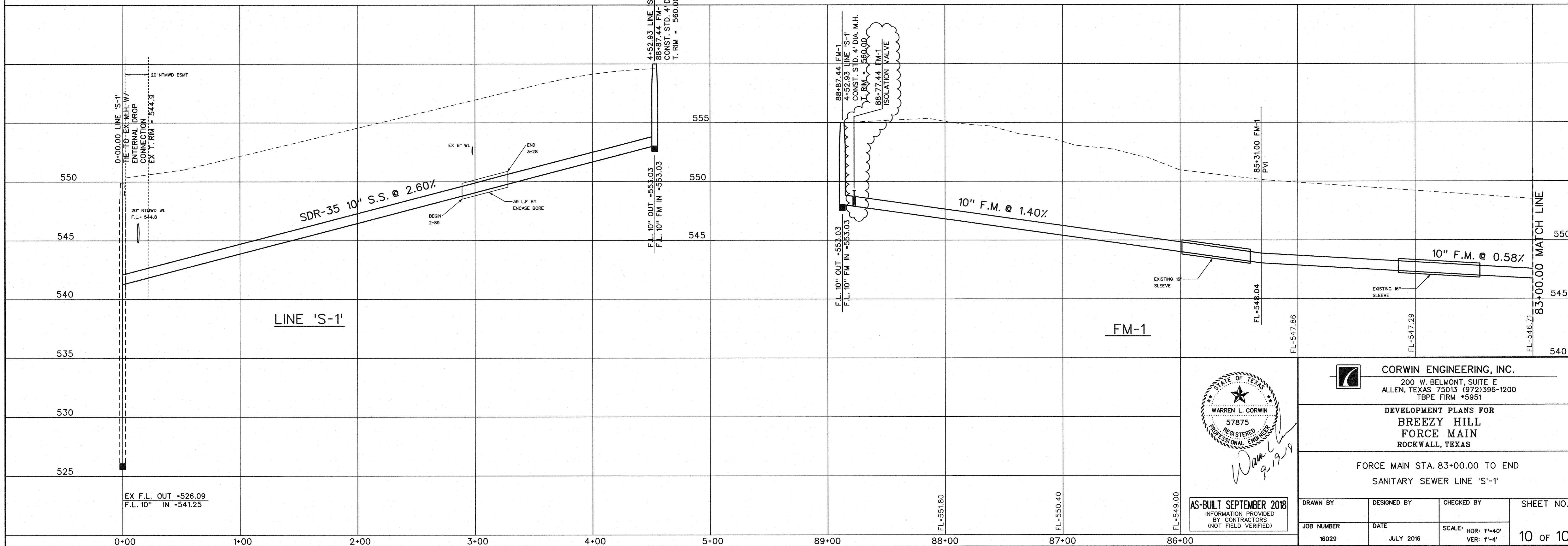
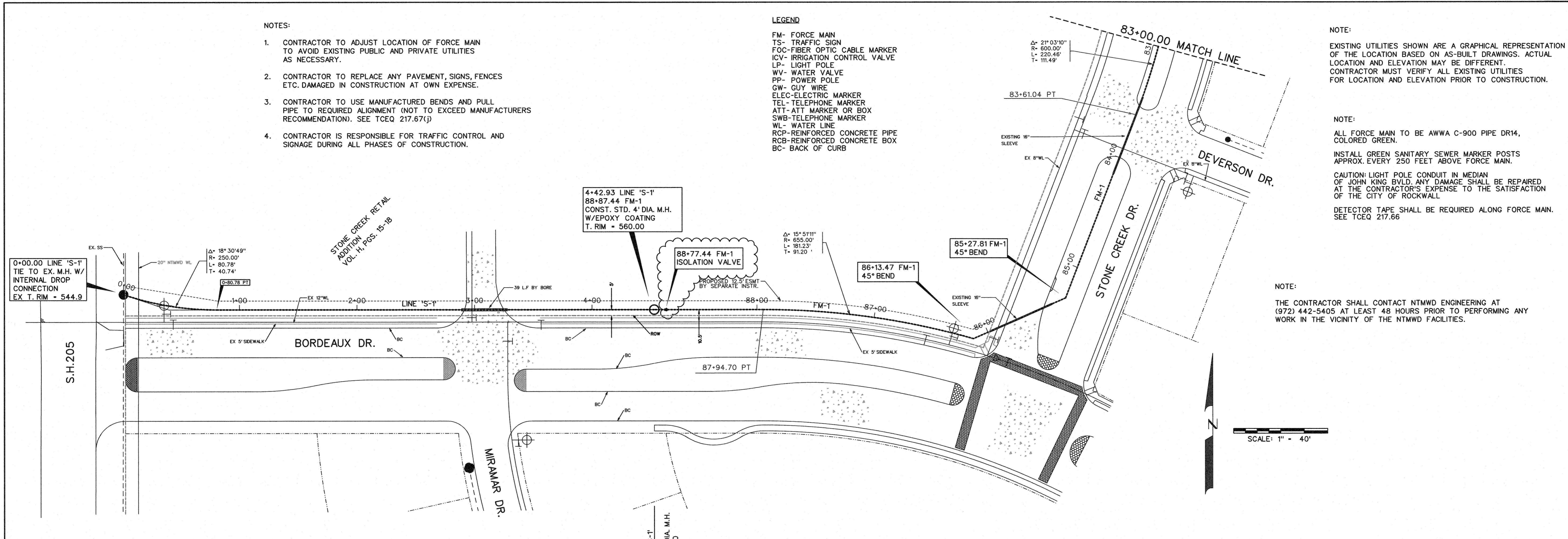
ALL FORCE MAIN TO BE AWWA C-900 PIPE DR14, COLORED GREEN.  
INSTALL GREEN SANITARY SEWER MARKER POSTS APPROX. EVERY 250 FEET ABOVE FORCE MAIN.

CAUTION: LIGHT POLE CONDUIT IN MEDIAN OF JOHN KING BLVD. ANY DAMAGE SHALL BE REPAIRED AT THE CONTRACTOR'S EXPENSE TO THE SATISFACTION OF THE CITY OF ROCKWALL.

DETECTOR TAPE SHALL BE REQUIRED ALONG FORCE MAIN. SEE TCEQ 217.66

NOTE:

THE CONTRACTOR SHALL CONTACT NTMWD ENGINEERING AT (972) 442-5405 AT LEAST 48 HOURS PRIOR TO PERFORMING ANY WORK IN THE VICINITY OF THE NTMWD FACILITIES.



AS-BUILT SEPTEMBER 2018  
INFORMATION PROVIDED BY CONTRACTORS (NOT FIELD VERIFIED)

**CORWIN ENGINEERING, INC.**  
200 W. BELMONT, SUITE E  
ALLEN, TEXAS 75013 (972)396-1200  
TBP# FIRM #5951

DEVELOPMENT PLANS FOR  
**BREEZY HILL  
FORCE MAIN  
ROCKWALL, TEXAS**

FORCE MAIN STA. 83+00.00 TO END  
SANITARY SEWER LINE 'S-1'

DRAWN BY	DESIGNED BY	CHECKED BY	SHEET NO.
JOB NUMBER	DATE	SCALE: HOR: 1"=40' VER: 1"=4'	10 OF 10
16029	JULY 2016		