

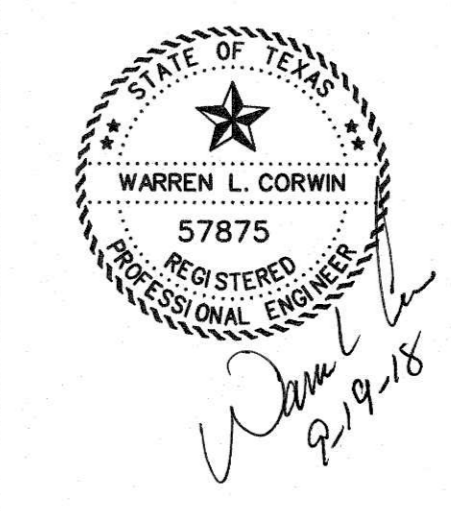
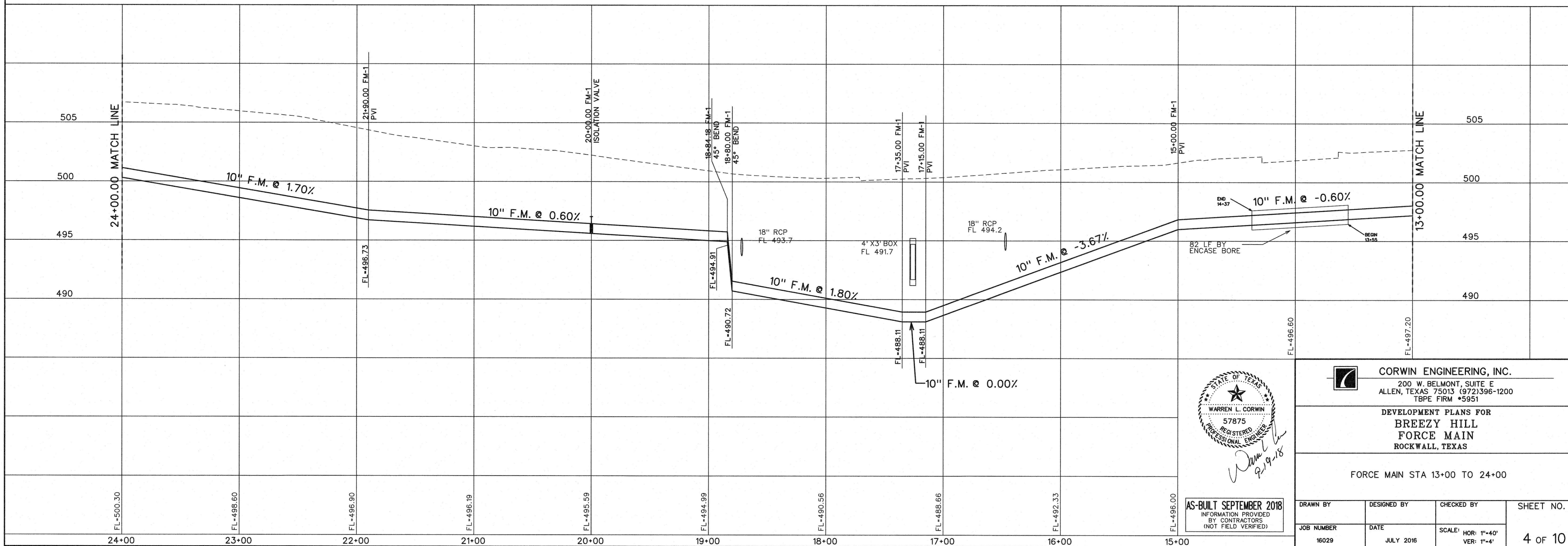
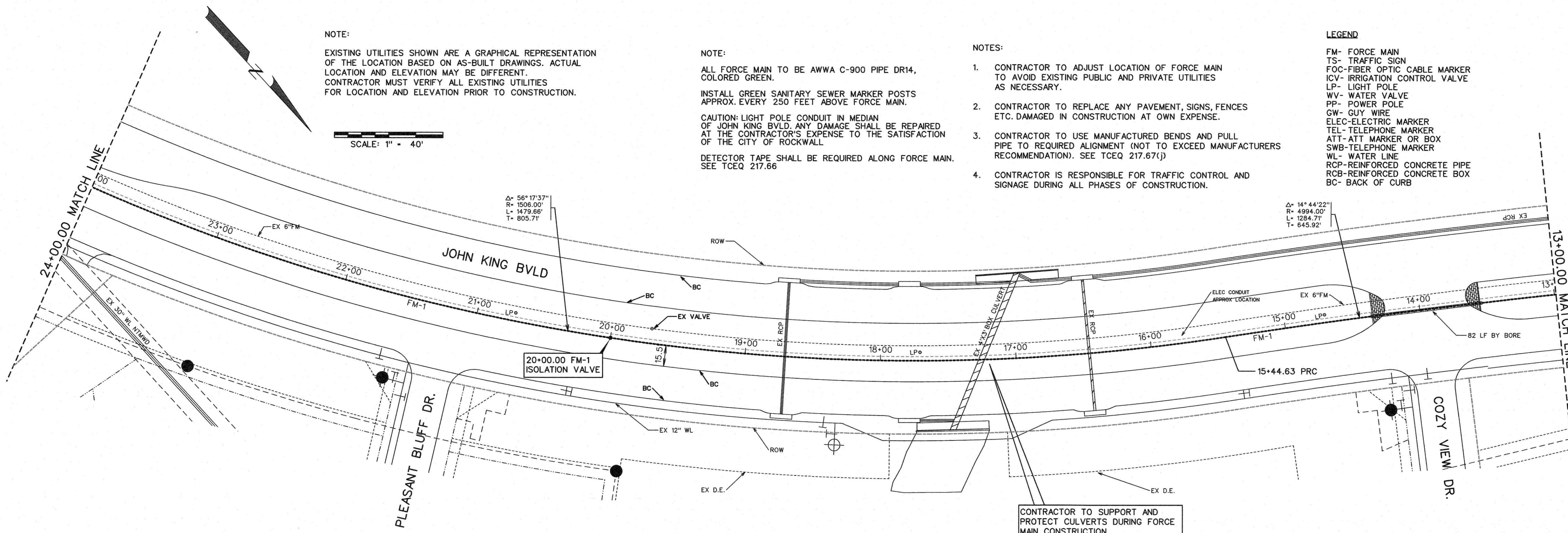
NOTE:
EXISTING UTILITIES SHOWN ARE A GRAPHICAL REPRESENTATION OF THE LOCATION BASED ON AS-BUILT DRAWINGS. ACTUAL LOCATION AND ELEVATION MAY BE DIFFERENT. CONTRACTOR MUST VERIFY ALL EXISTING UTILITIES FOR LOCATION AND ELEVATION PRIOR TO CONSTRUCTION.

SCALE: 1" = 40'

NOTE:
ALL FORCE MAIN TO BE AWWA C-900 PIPE DR14, COLORED GREEN.
INSTALL GREEN SANITARY SEWER MARKER POSTS APPROX. EVERY 250 FEET ABOVE FORCE MAIN.
CAUTION: LIGHT POLE CONDUIT IN MEDIAN OF JOHN KING BLVD. ANY DAMAGE SHALL BE REPAIRED AT THE CONTRACTOR'S EXPENSE TO THE SATISFACTION OF THE CITY OF ROCKWALL.
DETECTOR TAPE SHALL BE REQUIRED ALONG FORCE MAIN. SEE TCEQ 217.66

- NOTES:
- CONTRACTOR TO ADJUST LOCATION OF FORCE MAIN TO AVOID EXISTING PUBLIC AND PRIVATE UTILITIES AS NECESSARY.
 - CONTRACTOR TO REPLACE ANY PAVEMENT, SIGNS, FENCES ETC. DAMAGED IN CONSTRUCTION AT OWN EXPENSE.
 - CONTRACTOR TO USE MANUFACTURED BENDS AND PULL PIPE TO REQUIRED ALIGNMENT (NOT TO EXCEED MANUFACTURERS RECOMMENDATION). SEE TCEQ 217.67(j)
 - CONTRACTOR IS RESPONSIBLE FOR TRAFFIC CONTROL AND SIGNAGE DURING ALL PHASES OF CONSTRUCTION.

LEGEND
FM- FORCE MAIN
TS- TRAFFIC SIGN
FOC- FIBER OPTIC CABLE MARKER
ICV- IRRIGATION CONTROL VALVE
LP- LIGHT POLE
WV- WATER VALVE
PP- POWER POLE
GW- GUY WIRE
ELEC- ELECTRIC MARKER
TEL- TELEPHONE MARKER
ATT- ATT MARKER OR BOX
SWB- TELEPHONE MARKER
WL- WATER LINE
RCP- REINFORCED CONCRETE PIPE
RCB- REINFORCED CONCRETE BOX
BC- BACK OF CURB



CORWIN ENGINEERING, INC.
200 W. BELMONT, SUITE E
ALLEN, TEXAS 75013 (972)396-1200
TBPE FIRM #5951

DEVELOPMENT PLANS FOR
**BREEZY HILL
FORCE MAIN**
ROCKWALL, TEXAS

FORCE MAIN STA 13+00 TO 24+00

DRAWN BY	DESIGNED BY	CHECKED BY	SHEET NO.
JOB NUMBER	DATE	SCALE: HOR: 1"=40' VER: 1"=4'	4 of 10
16029	JULY 2016		

AS-BUILT SEPTEMBER 2018
INFORMATION PROVIDED
BY CONTRACTORS
(NOT FIELD VERIFIED)