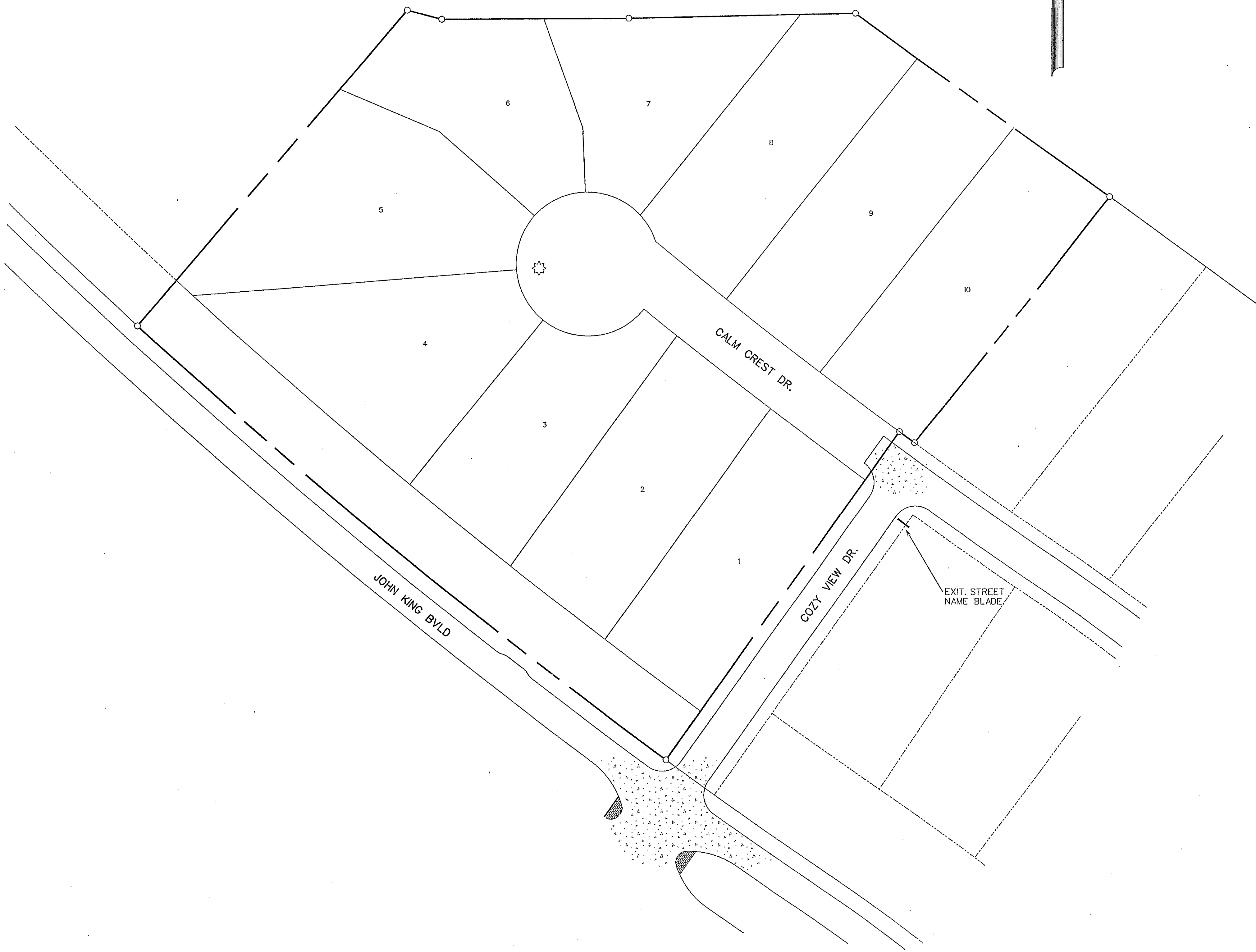
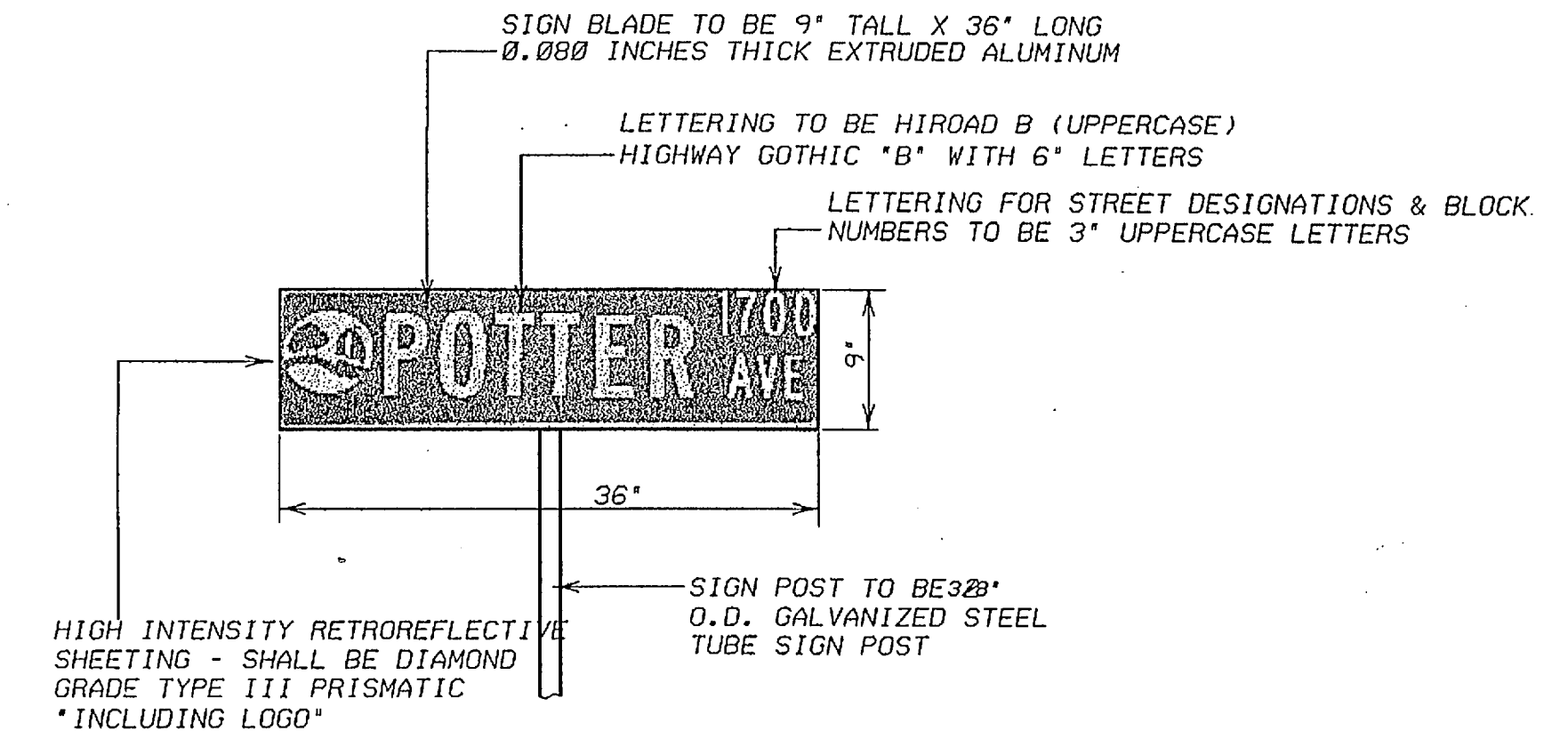


SCALE: 1" = 50'



NOTE: STREET NAME SIGNS SHALL CONSIST OF A WHITE LEGEND INCLUDING LOGO ON A GREEN BACKGROUND.



STREET SIGN DETAIL
NOT TO SCALE

STREET SIGN NOTES

All signage installed shall comply with the current "Texas Manual on Uniform Traffic Control Devices" and the "Standard Highway Sign Designs for Texas".

The developer shall be responsible for furnishing and installing all regulatory, warning and street name signs and sign mounts in accordance with the approved engineering plans.

Block Numbers are required on all street name blades.

Street Name Blades shall be nine inch (9") tall extruded aluminum. The blades shall be 0.080 inches thick.

High Intensity Retro reflective Sheeting for Street, Regulatory, and Warning Signs - shall be high intensity diamond grade type III prismatic.

The Lettering for the street blades shall be HIROAD B with all uppercase fonts. "Highway Gothic B" with six- inch letters. Letters for abbreviated street designations shall be three inches (3") tall with all uppercase fonts (i.e., LN, PKWY, CT, etc.). Block numbers shall be three- inches (3") tall.

The street sign background shall be green and the legend shall be white.

The street sign blade must incorporate the current City of Rockwall logo.

For a street with a cul-de-sac end, a standard W 14-2a shall be mounted over the street name blade.


Sign posts shall be 2 3/8" O.D. galvanized steel tube sign post with a galvanized finish.

Sign clamps and brackets shall be high strength aluminum.

RELEASED FOR CONSTRUCTION
ALL RESPONSIBILITY FOR ADEQUACY OF DESIGN REMAINS WITH THE DESIGN ENGINEER. THE CITY OF ROCKWALL, IN REVIEWING AND RELEASING PLANS FOR CONSTRUCTION, ASSUMES NO RESPONSIBILITY FOR ADEQUACY OR ACCURACY OF DESIGN.

- LEGEND
- ☼ - STREET LIGHT
 - - STOP SIGN
 - - STREET NAME BLADE

AS-BUILT JUNE 2017
INFORMATION PROVIDED BY
CONTRACTORS
(NOT FIELD VERIFIED)

CITY _____ DATE _____			
 CORWIN ENGINEERING, INC. 200 W. BELMONT, SUITE E ALLEN, TEXAS 75013 (972)396-1200 TBPE FIRM #5951			
DEVELOPMENT PLANS FOR BREEZY HILL PHASE VII ROCKWALL, TEXAS			
STREET SIGN PLAN			
DRAWN BY	DESIGNED BY	CHECKED BY	SHEET NO.
JOB NUMBER	DATE	SCALE:	9 OF 10
18006	JUNE 2016	1"=50'	