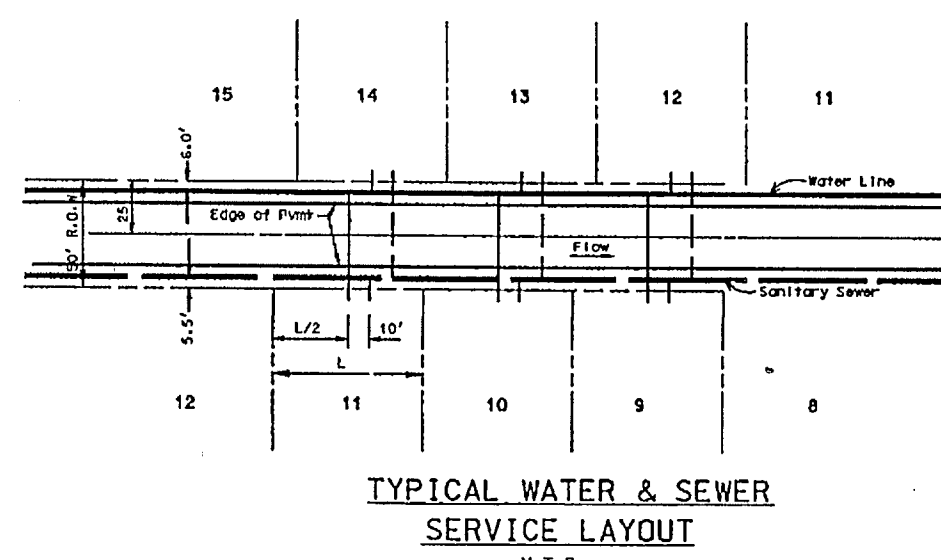
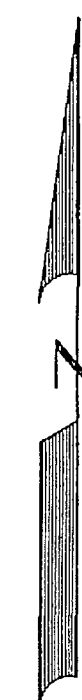


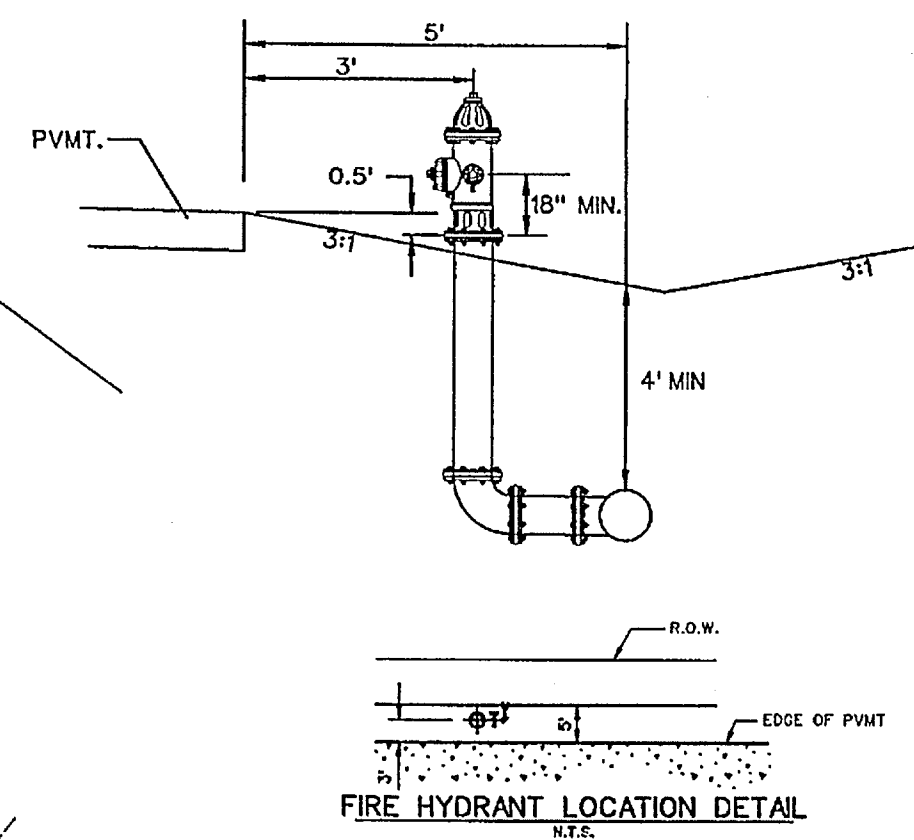
NOTE:

THE CONTRACTOR SHALL VERIFY ALL EXISTING UTILITIES FOR LOCATION AND ELEVATION PRIOR TO CONSTRUCTION. ALL UNDERGROUND UTILITIES SHOWN ARE FROM AS-BUILT PLANS AND NOT FIELD VERIFIED.

SCALE: 1" = 50'



BENCHMARK:
" X " Cut on top of curb on east side of John King Blvd.
approx. 48' north of the centerline of Pleasant View Dr.
ELEVATION = 505.61

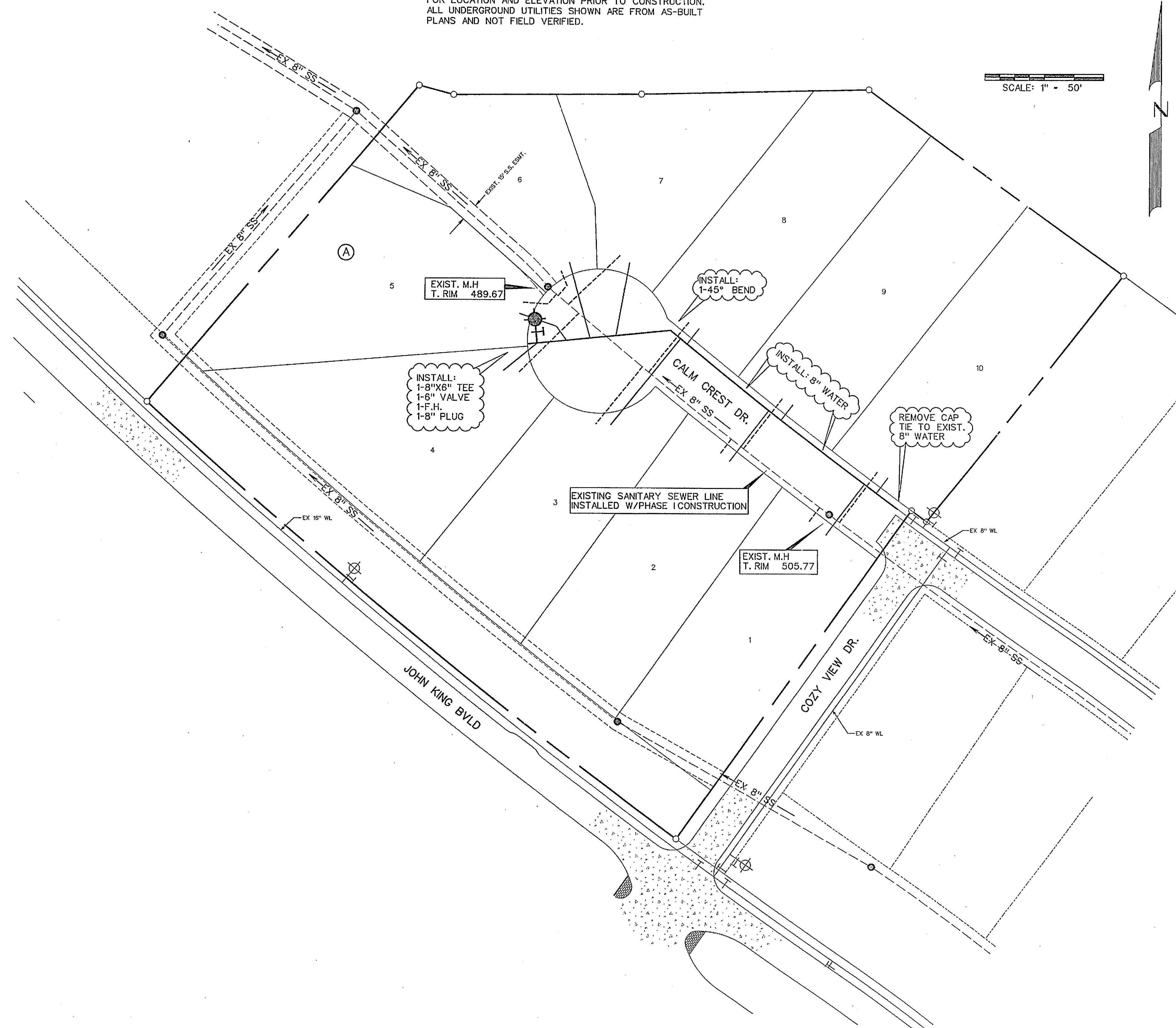


LEGEND

- PROP. WATER LINE
- PROP. FIRE HYDRANT AND VALVE
- PROP. GATE VALVE
- PROP. FLUSH VALVE
- EXIST. WATER LINE
- EXIST. FIRE HYDRANT AND VALVE
- PROP. SANITARY SEWER
- PROP. MANHOLE
- PROP. CLEANOUT
- EXIST. SANITARY SEWER
- EXIST. MANHOLE
- PROP. STORM SEWER
- PROP. CURB INLETS
- PROP. CONC. HEADWALL

NOTE:

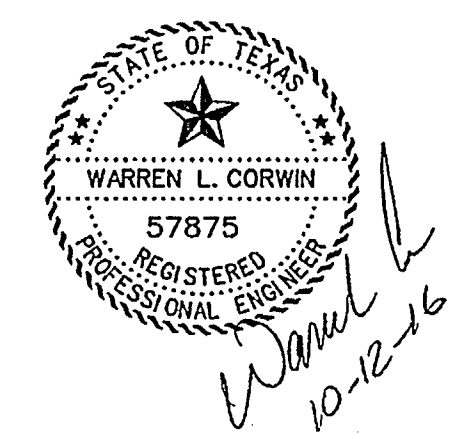
- ALL WATER LINES TO BE CLASS 200 PIPE C-900 DR 14.
- ALL SANITARY SEWER PIPE TO BE SDR 35 FOR 5-10' DEEP AND SDR 26 FOR 10' AND GREATER.
- INSTALL BLUE "EMS" DISK ON WATER LINE AT EVERY 250' AND CHANGE IN DIRECTION, VALVE, AND SERVICE.
- INSTALL GREEN "EMS" DISK ON SANITARY SEWER LINE EVERY 250' AND AT EVERY CHANGE IN DIRECTION, MANHOLE, CLEANOUT, AND SERVICE.
- ALL MANHOLES TO BE RAVEN EPOXY LINED AND SEALED.



AS-BUILT JUNE 2017
INFORMATION PROVIDED BY
CONTRACTORS
(NOT FIELD VERIFIED)

RELEASED FOR CONSTRUCTION
ALL RESPONSIBILITY FOR ADEQUACY OF DESIGN
REMAINS WITH THE DESIGN ENGINEER. THE CITY
OF ROCKWALL, IN REVIEWING AND RELEASING
PLANS FOR CONSTRUCTION, ASSUMES NO
RESPONSIBILITY FOR ADEQUACY OR ACCURACY
OF DESIGN.

CITY _____ DATE _____



CORWIN ENGINEERING, INC. 200 W. BELMONT, SUITE E ALLEN, TEXAS 75013 (972)396-1200 TBPE FIRM #5951			
DEVELOPMENT PLANS FOR BREEZY HILL PHASE VII ROCKWALL, TEXAS			
WATER AND SANITARY SEWER PLAN			
DRAWN BY	DESIGNED BY	CHECKED BY	SHEET NO.
JOB NUMBER	DATE	SCALE:	6 of 10
16006	JUNE 2016	1"=50'	