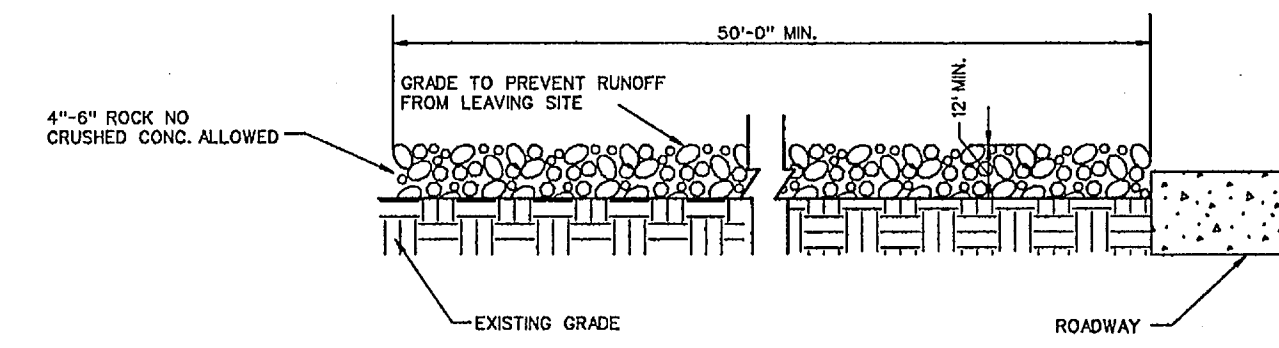
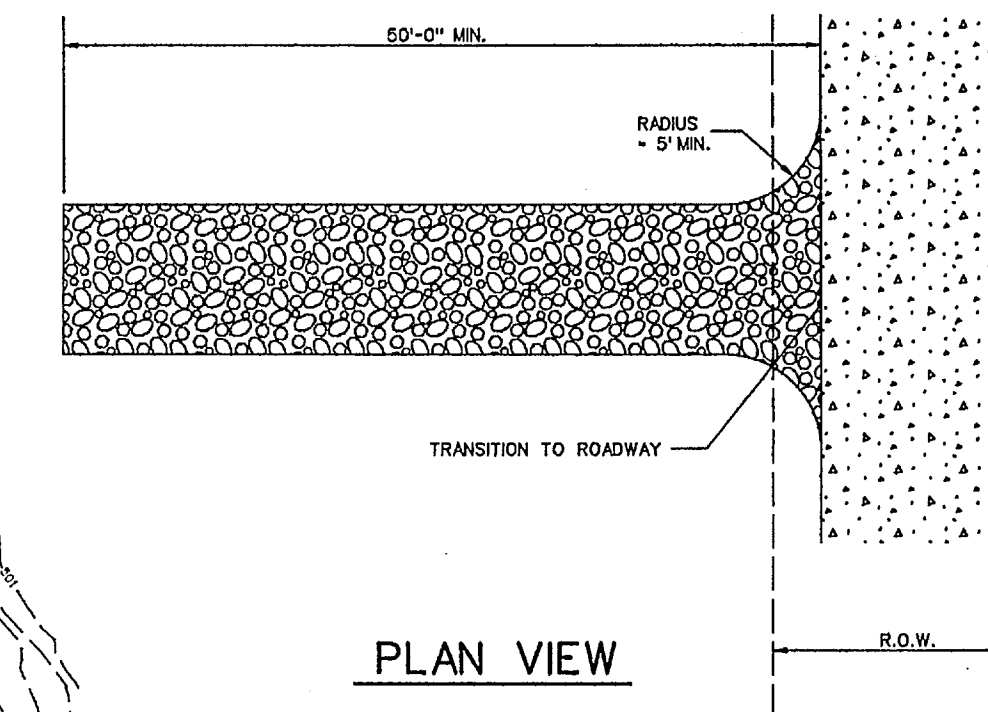


CONSTRUCTION SEQUENCE

1. GRADING CONTRACTOR TO INSTALL TEMPORARY STABILIZED ENTRANCE.
2. INSTALL SILT FENCE AS SHOWN, (TS-600 POLY FELT) PER C.O.G. SPECIFICATIONS.
3. PERFORM GRADING AND UTILITY CONSTRUCTION.
4. AFTER THE INLET BOTTOMS ARE CONSTRUCTED, THE INLETS SHALL BE FILLED WITH STONE AND COVERED WITH A FILTER FABRIC (TS-600 POLY FELT OR EQUIVALENT) BY UTILITY CONTRACTOR.
5. PRIOR TO CITY RELEASING PAVING, SOD OR SEEDED CURLEX SHALL BE INSTALLED ON SIDES AND BOTTOM OF ALL DETENTION PONDS.
6. AFTER PAVING AND COMPLETION OF INLETS, INLET FILTERS SHALL BE INSTALLED IN ALL INLETS AND MAINTAINED UNTIL RE-VEGETATION HAS BEEN COMPLETED BY PAVING CONTRACTOR.
7. SILT FENCE SHALL REMAIN IN PLACE UNTIL RE-VEGETATION HAS BEEN COMPLETED.
8. PAVING CONTRACTOR SHALL REMOVE TEMPORARY STABILIZED ENTRANCE.
9. PRIOR TO CITY ACCEPTANCE THE PAVING CONTRACTOR SHALL BE RESPONSIBLE FOR REMOVING ANY MUD OR SILT WHICH COLLECTS ON THE EXISTING AND NEW PAVEMENT.
10. 75-80% OF ALL DISTURBED AREA TO HAVE A MIN. 1" STAND OF GRASS ESTABLISHED PRIOR TO ENGINEERING ACCEPTANCE.
11. ALL BAR DITCHES TO HAVE ANCHORED/SEEDED CURLEX PRIOR TO ACCEPTANCE IF GRASS IS NOT ESTABLISHED.

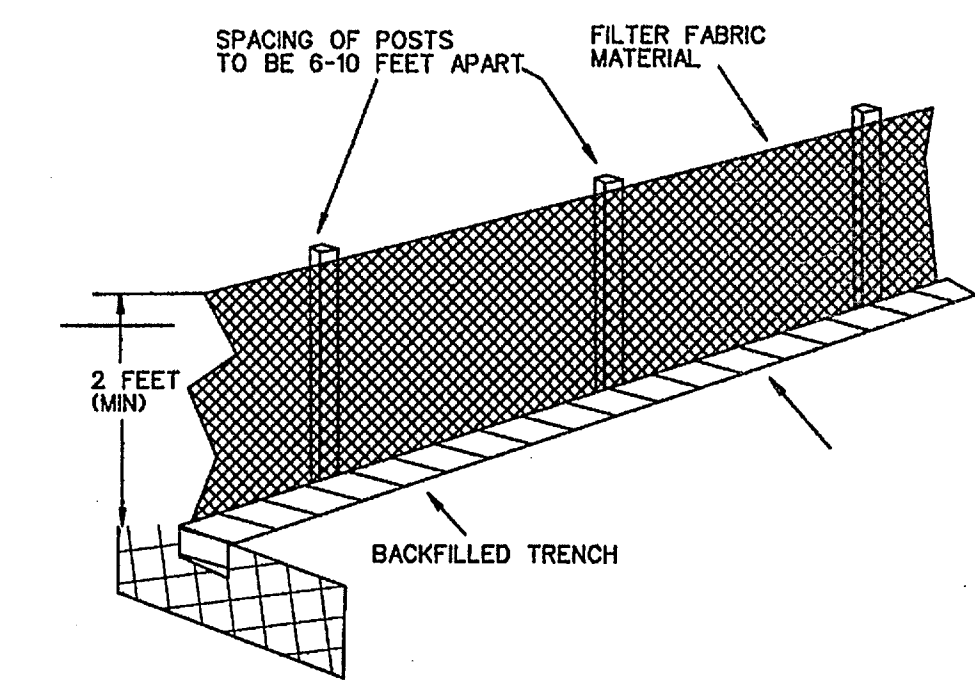


PROFILE

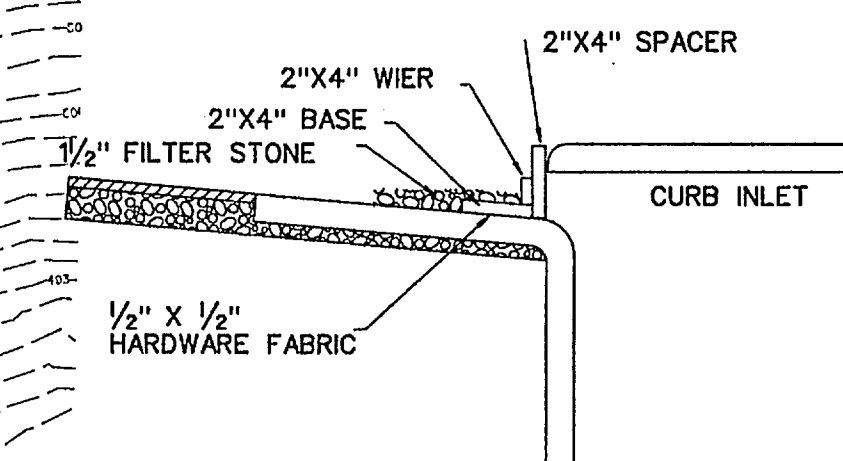


PLAN VIEW

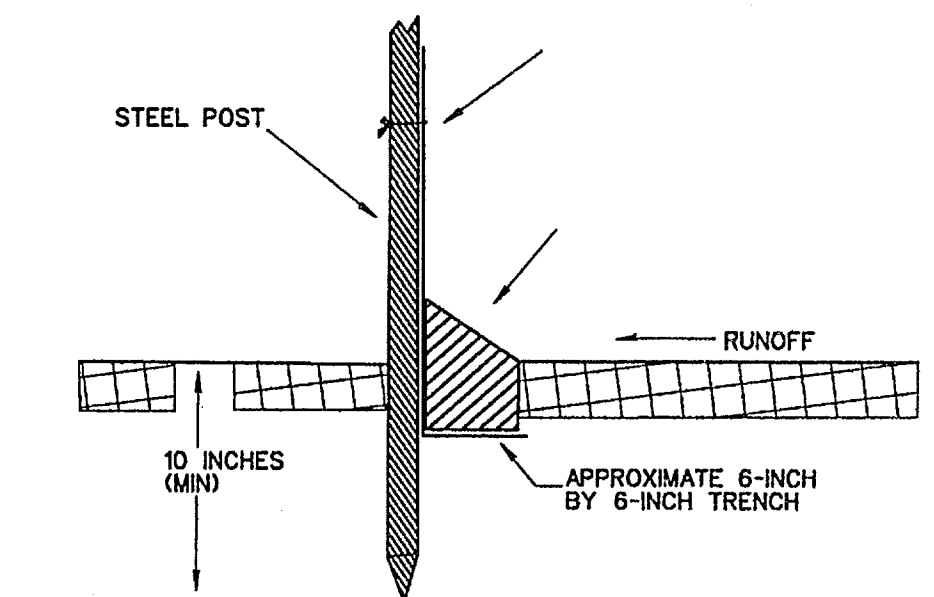
STABILIZED ENTRANCE DETAIL



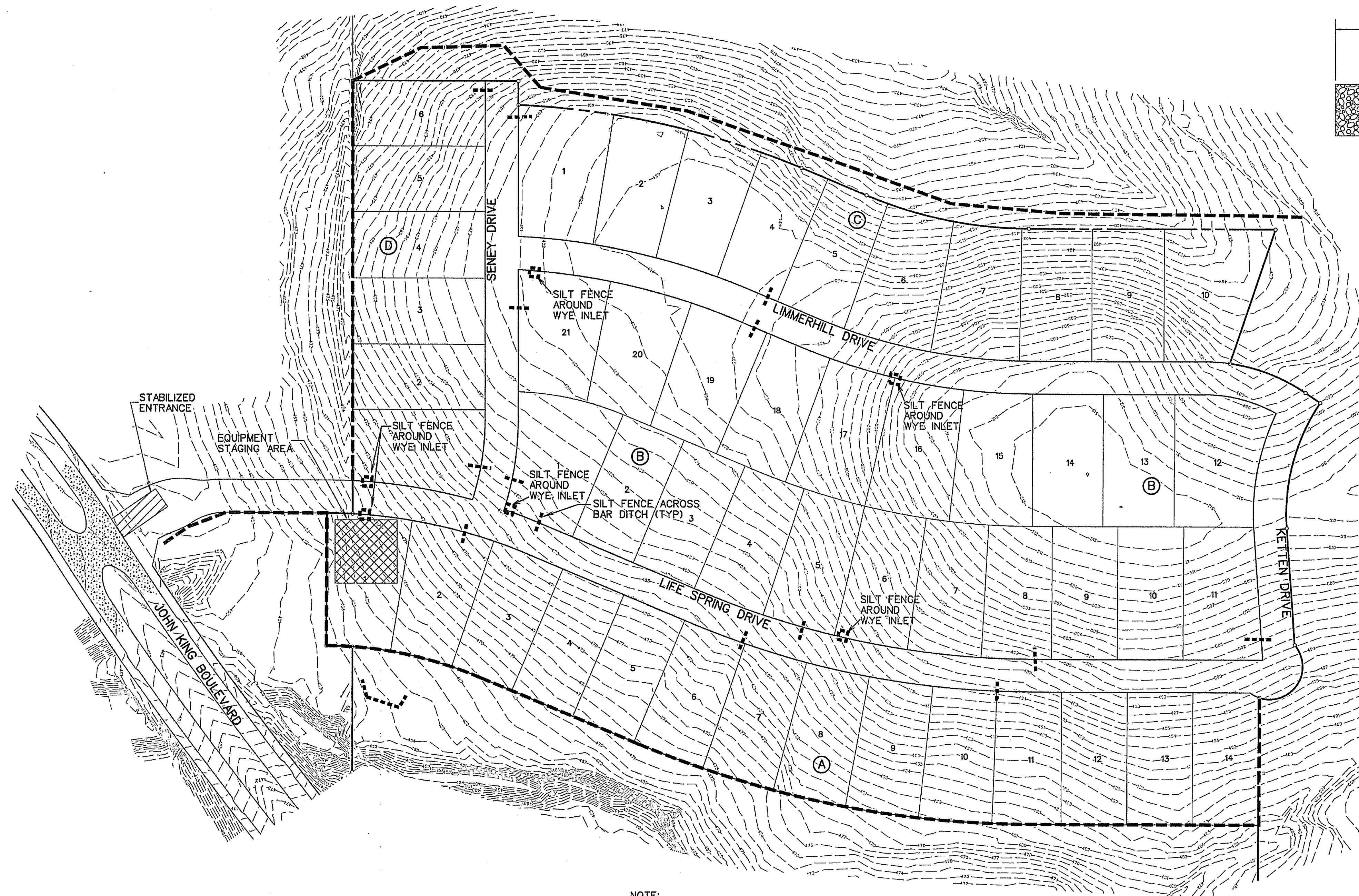
SCALE: 1" = 100'



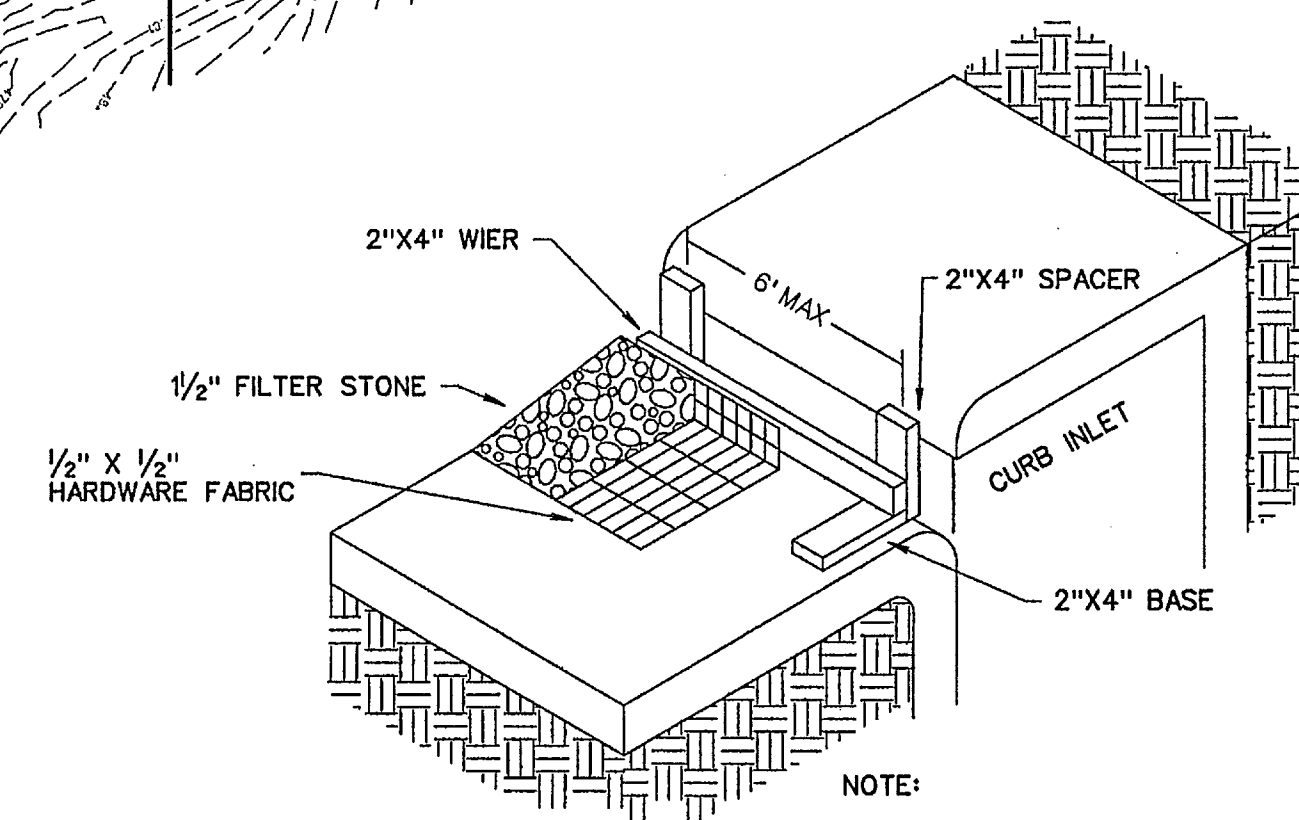
INLET SECTION



FILTER FABRIC FENCE DETAIL



NOTE:
SILT FENCE AROUND WYE INLETS SHALL BE PLACED A MINIMUM OF 3' AWAY FROM EDGE OF INLET



NOTE:
EXTEND FABRIC, FRAME AND FILTER STONE 12' BEYOND END OF INLET ON BOTH ENDS.

TYPE B CURB INLET PROTECTION

LEGEND

- SILT FENCE (BEFORE CONSTRUCTION) - - - - -
- SILT FENCE (AFTER GRADING) - - - - -

CORWIN ENGINEERING, INC.
200 W. BELMONT, SUITE E
ALLEN, TEXAS 75013 (972)396-1200
TYPE FIRM #5951

DEVELOPMENT PLANS FOR
**BREEZY HILL
PHASE IV**
ROCKWALL, TEXAS

EROSION CONTROL PLAN

DRAWN BY	DESIGNED BY	CHECKED BY	SHEET NO.
JOB NUMBER	DATE	SCALE	18 OF 19
14025	AUGUST 2014	1"=100'	