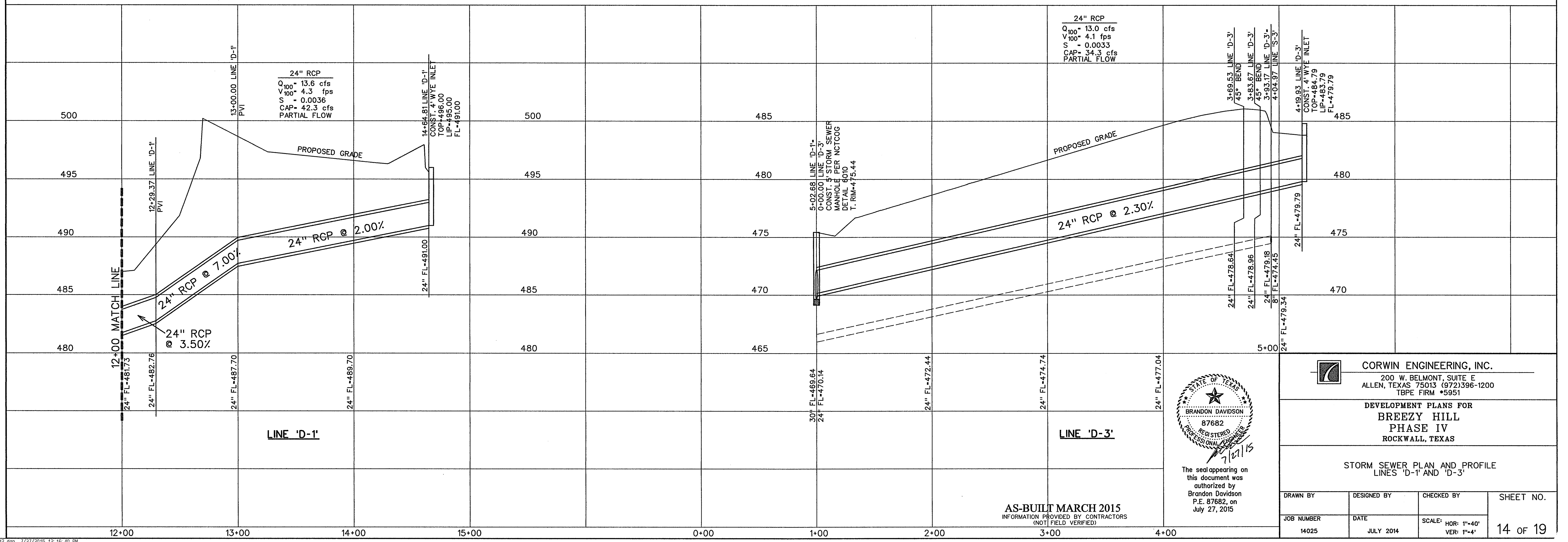


- LEGEND**
- (B) - BLOCK LABEL
 - (A) - INLET NUMBER
 - (1) - CURVE NUMBER
 - - SANITARY SEWER
 - ⊕ - WATER
 - ▬ - PROPOSED STORM SEWER
 - ▨ - EXISTING STORM SEWER

BENCHMARK:
BRASS CAP ON INLET ON SOUTH SIDE OF LIMMERTHILL DRIVE
AT PAVING STATION 6+27.35 (INLET *B)
ELEV. = 496.33



The seal appearing on this document was authorized by Brandon Davidson P.E. 87682, on July 27, 2015

CORWIN ENGINEERING, INC.
200 W. BELMONT, SUITE E
ALLEN, TEXAS 75013 (972)396-1200
TBPE FIRM #5951

DEVELOPMENT PLANS FOR
BREZY HILL
PHASE IV
ROCKWALL, TEXAS

STORM SEWER PLAN AND PROFILE
LINES 'D-1' AND 'D-3'

AS-BUILT MARCH 2015
INFORMATION PROVIDED BY CONTRACTORS
(NOT FIELD VERIFIED)

DRAWN BY	DESIGNED BY	CHECKED BY	SHEET NO.
JOB NUMBER	DATE	SCALE: HOR: 1"=40' VER: 1"=4'	14 OF 19
14025	JULY 2014		