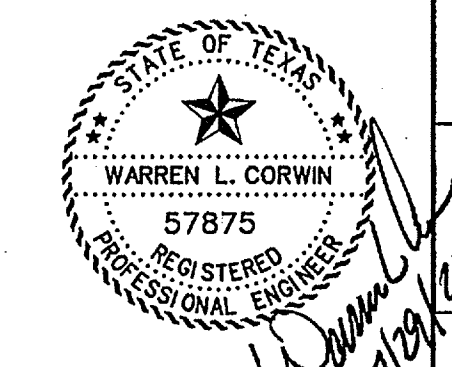
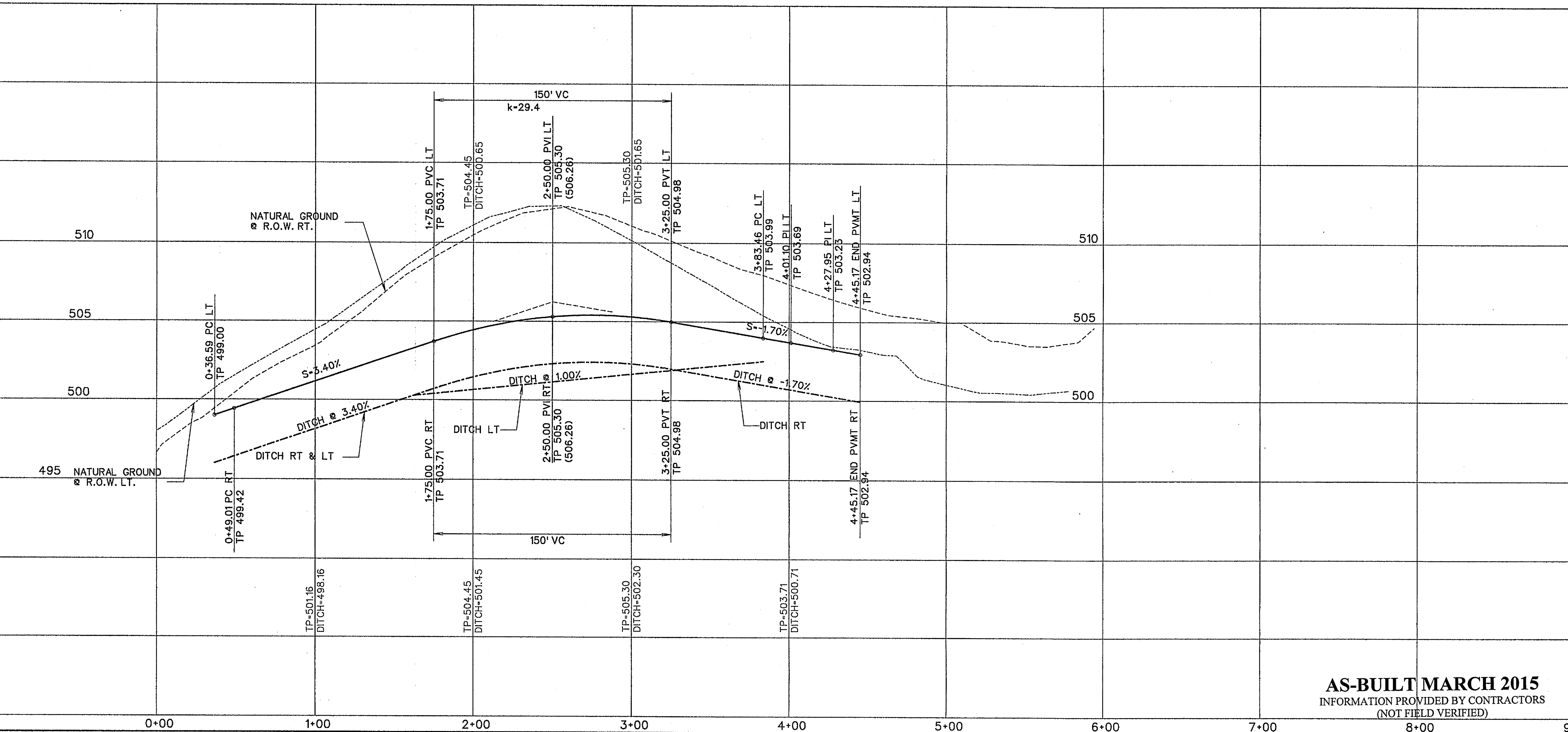
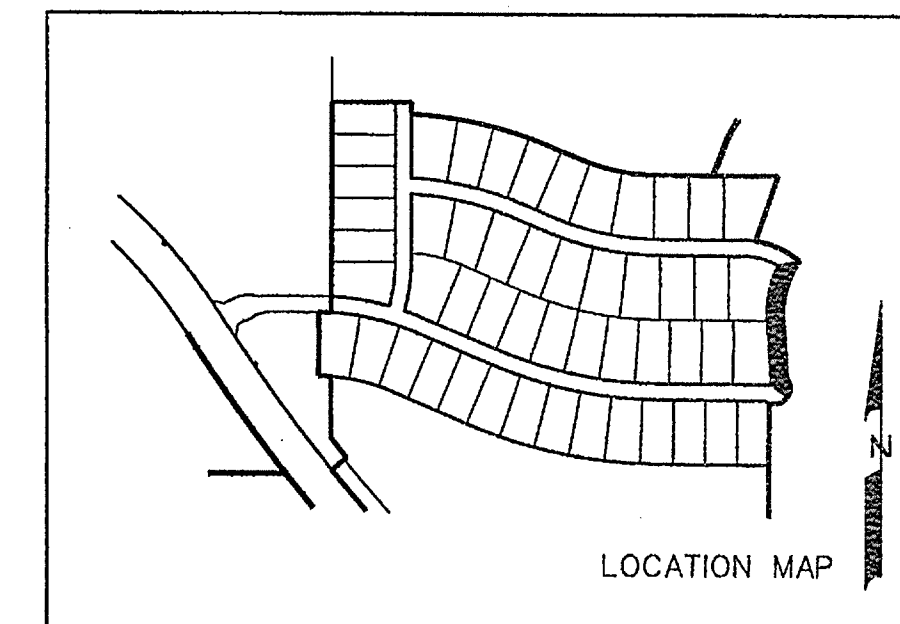


NOTE:  
SEE SHEET 7 FOR TYP.  
28' PAVING SECTION



The seal appearing on this document was authorized by Warren L. Corwin, P.E. 57875, on July 29, 2014

**CORWIN ENGINEERING, INC.**  
200 W. BELMONT, SUITE E  
ALLEN, TEXAS 75013 (972)396-1200  
TBPE FIRM #5951

DEVELOPMENT PLANS FOR  
**BREEZY HILL**  
PHASE IV  
ROCKWALL, TEXAS

KETTEN DRIVE

**AS-BUILT MARCH 2015**  
INFORMATION PROVIDED BY CONTRACTORS  
(NOT FIELD VERIFIED)

DRAWN BY	DESIGNED BY	CHECKED BY	SHEET NO.
JOB NUMBER	DATE	SCALE: HOR: 1"=40' VER: 1"=4'	9 OF 19
14025	JULY 2014		