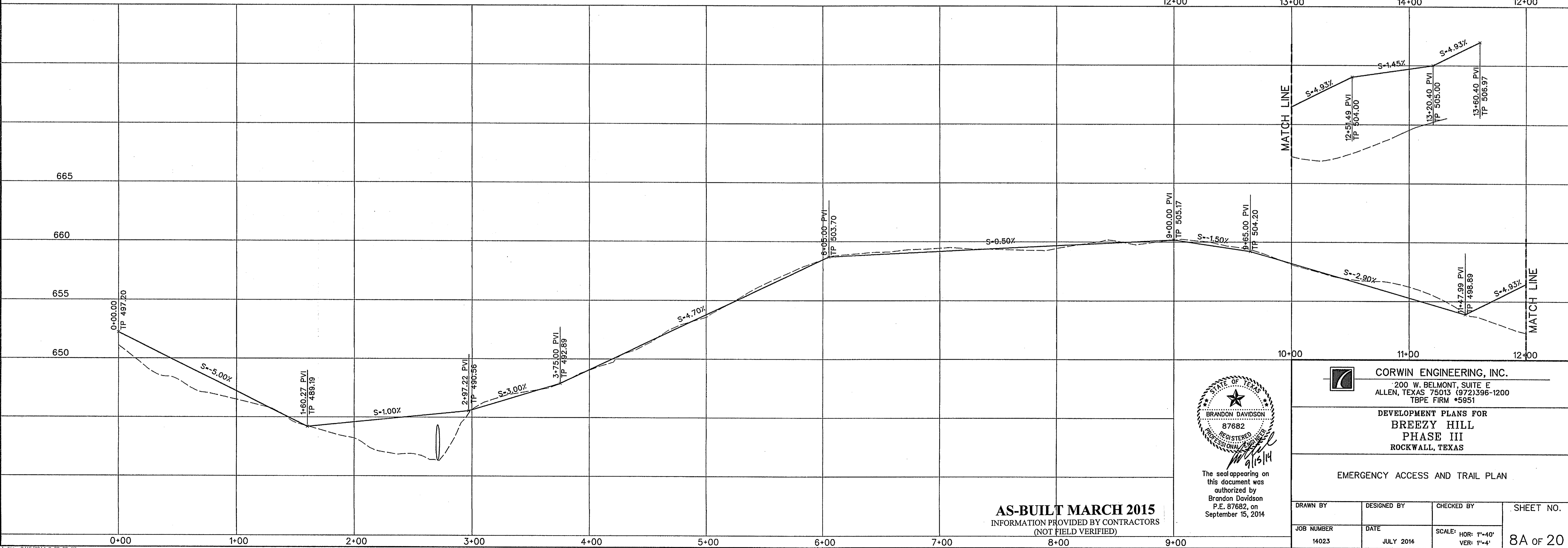
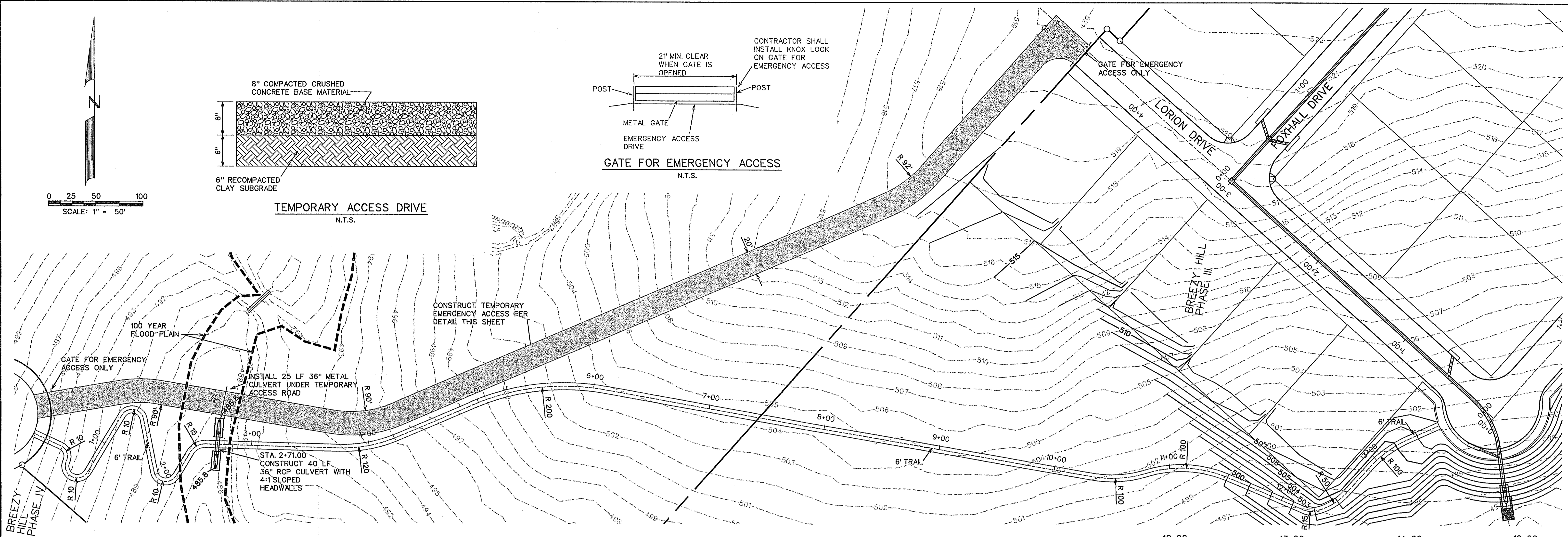
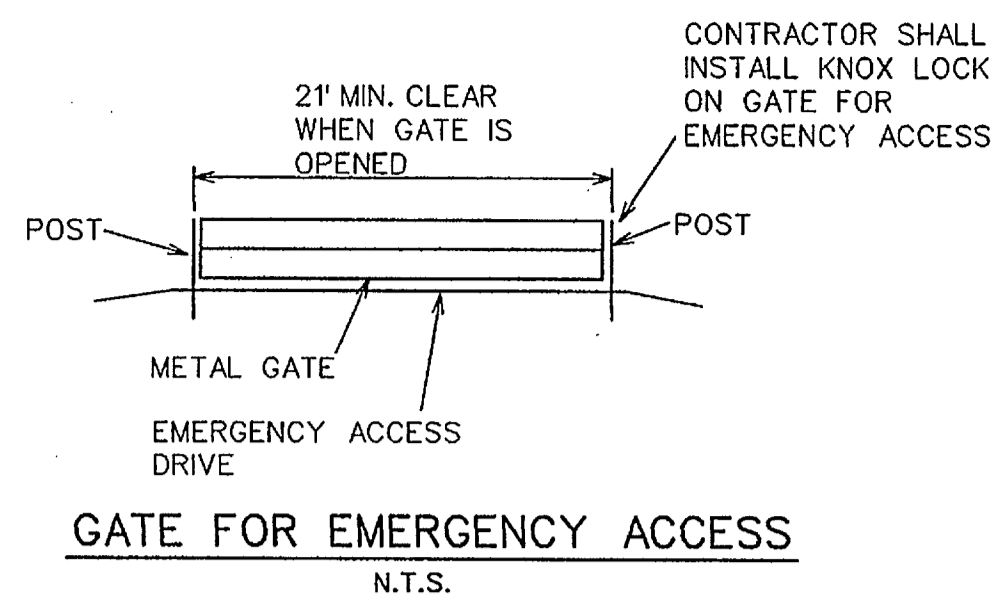


**TEMPORARY ACCESS DRIVE**  
N.T.S.



**AS-BUILT MARCH 2015**  
INFORMATION PROVIDED BY CONTRACTORS  
(NOT FIELD VERIFIED)



The seal appearing on this document was authorized by Brandon Davidson P.E. 87682, on September 15, 2014

**CORWIN ENGINEERING, INC.**  
200 W. BELMONT, SUITE E  
ALLEN, TEXAS 75013 (972)396-1200  
TBPE FIRM #5951

DEVELOPMENT PLANS FOR  
**BREEZY HILL**  
PHASE III  
ROCKWALL, TEXAS

EMERGENCY ACCESS AND TRAIL PLAN

DRAWN BY	DESIGNED BY	CHECKED BY	SHEET NO.
JOB NUMBER	DATE	SCALE: HOR: 1"=40' VER: 1"=4'	8A OF 20
14023	JULY 2014		