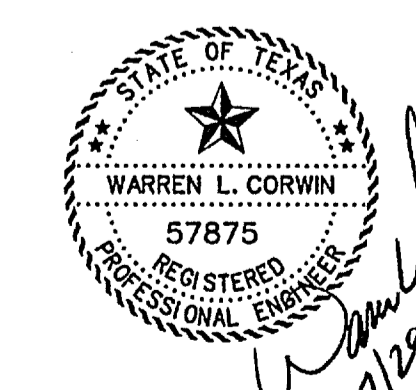
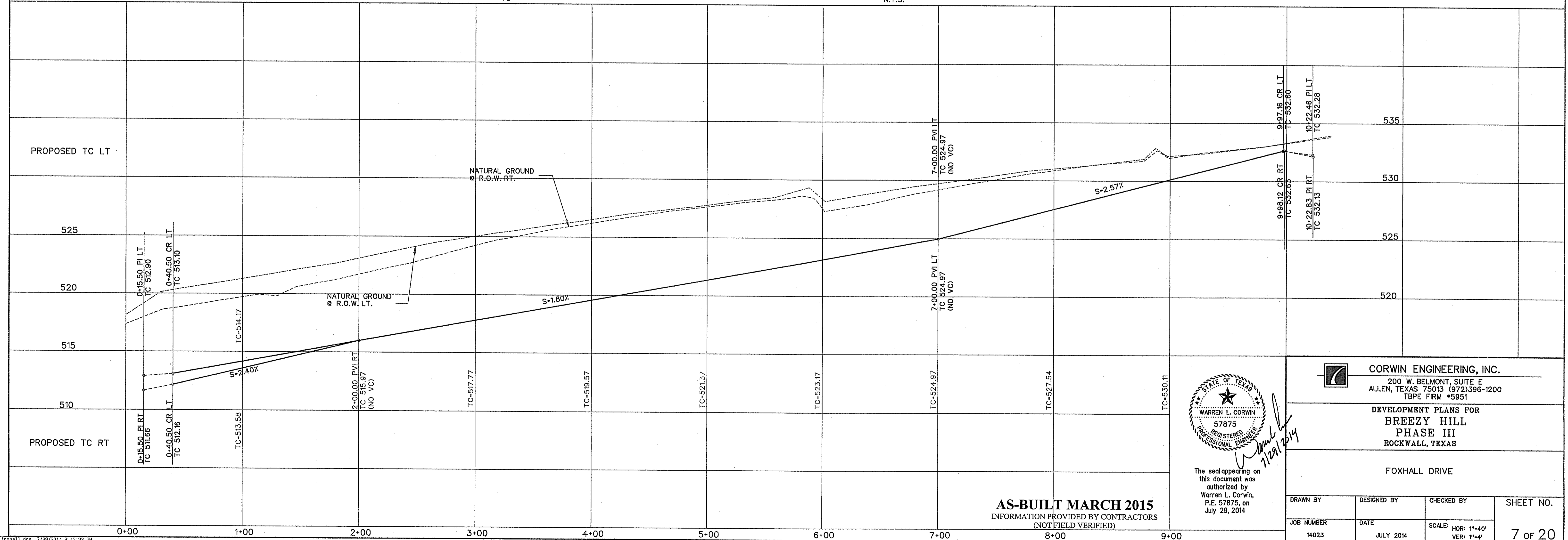
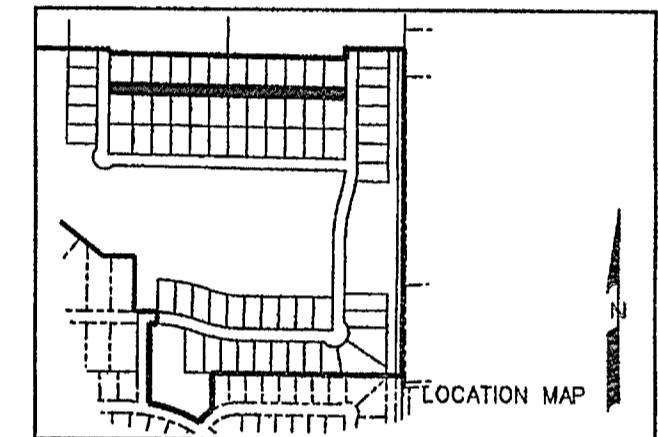
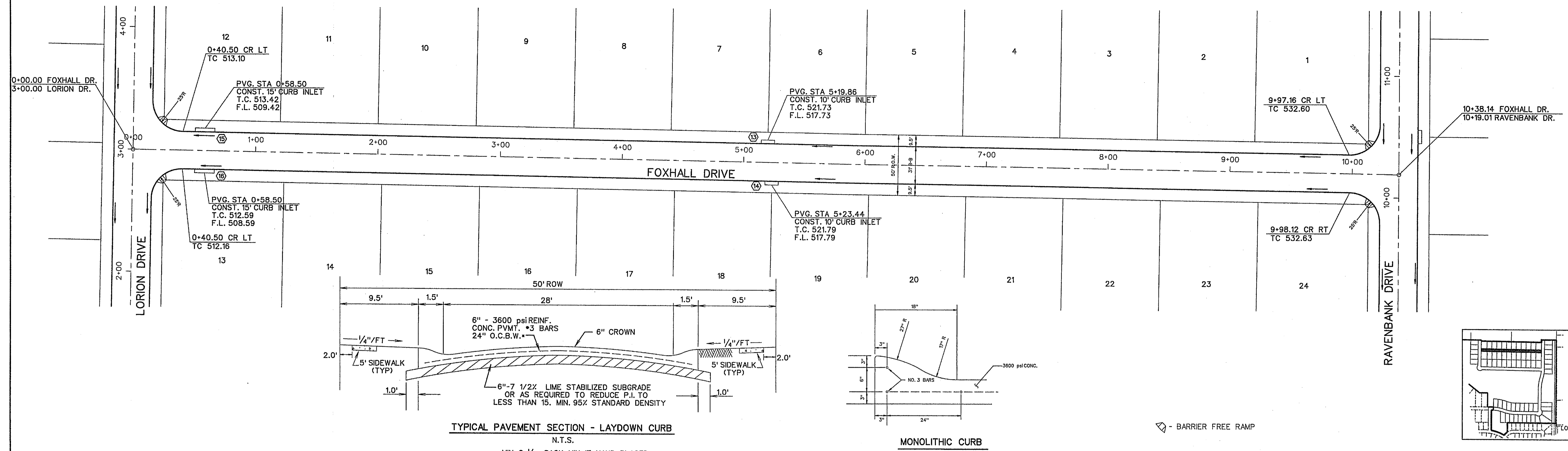


SCALE: 1" = 40'



The seal appearing on this document was authorized by Warren L. Corwin, P.E. 57875, on July 29, 2014

CORWIN ENGINEERING, INC.
 200 W. BELMONT, SUITE E
 ALLEN, TEXAS 75013 (972)396-1200
 TBPE FIRM #5951

DEVELOPMENT PLANS FOR
**BREEZY HILL
 PHASE III**
 ROCKWALL, TEXAS

AS-BUILT MARCH 2015
 INFORMATION PROVIDED BY CONTRACTORS
 (NOT FIELD VERIFIED)

DRAWN BY	DESIGNED BY	CHECKED BY	SHEET NO.
JOB NUMBER	DATE	SCALE: HOR: 1"=40' VER: 1"=4'	7 of 20
14023	JULY 2014		