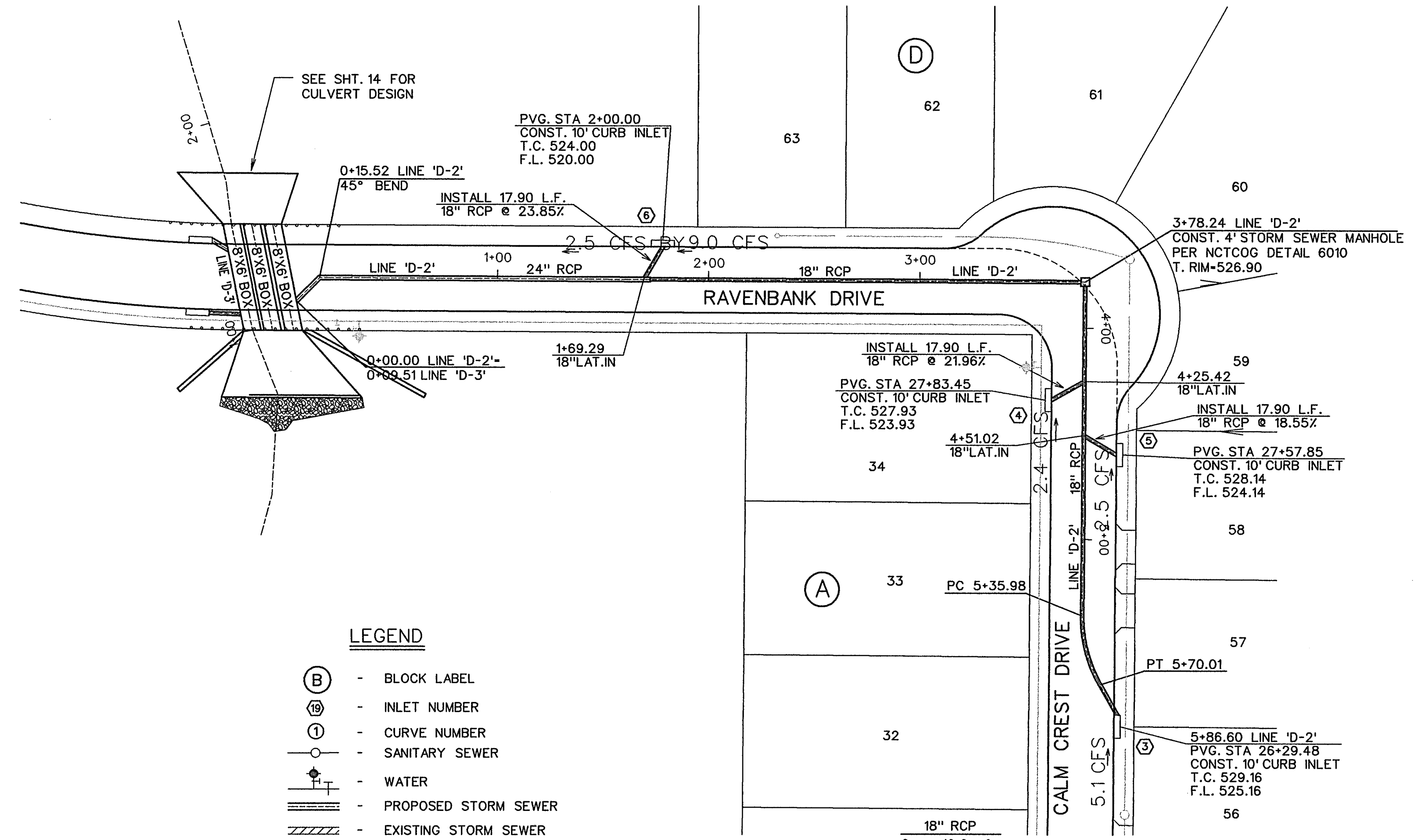
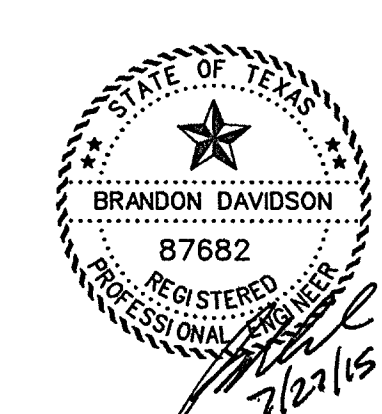
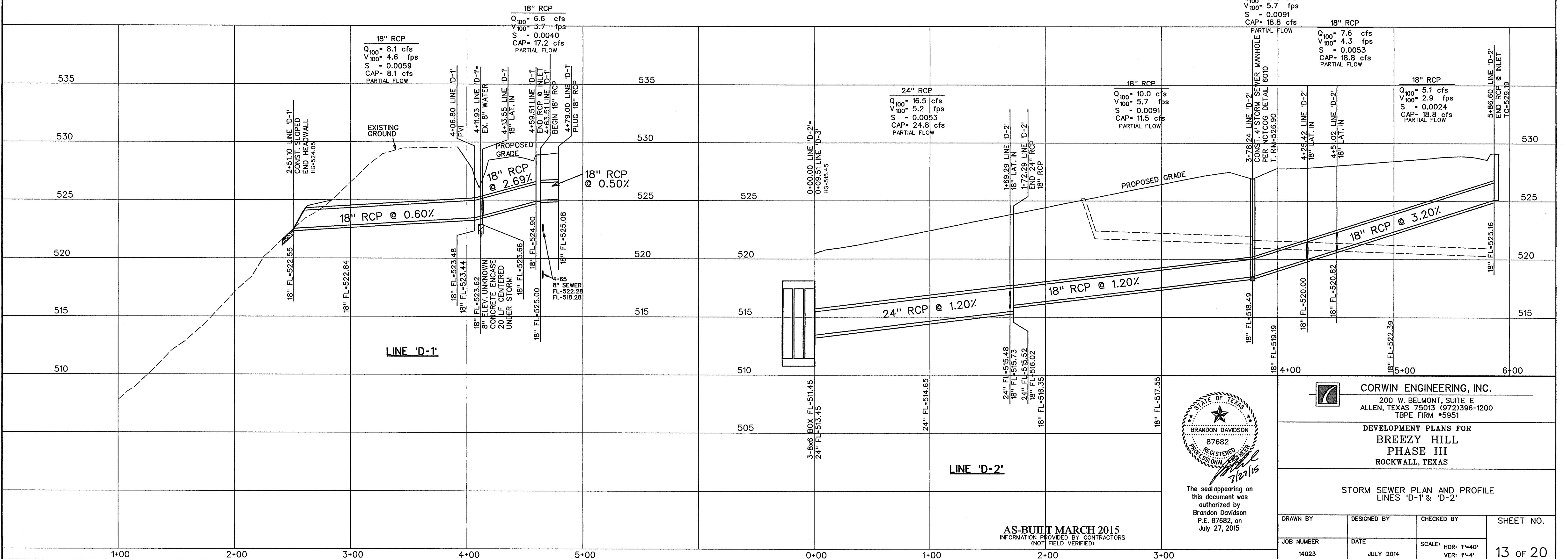


BENCHMARK:  
BRASS CAP ON INLET ON SOUTH SIDE OF CALM CREST DRIVE  
AT PAVING STATION 21+00.00 (INLET \*1)  
ELEV. = 528.82



**LEGEND**

- (B) - BLOCK LABEL
- (IN) - INLET NUMBER
- (C) - CURVE NUMBER
- - SANITARY SEWER
- ⊕ - WATER
- ▬ - PROPOSED STORM SEWER
- ▨ - EXISTING STORM SEWER



The seal appearing on this document was authorized by  
Brandon Davidson  
P.E. 87682, on  
July 27, 2015

**CORWIN ENGINEERING, INC.**  
200 W. BELMONT, SUITE E  
ALLEN, TEXAS 75013 (972)396-1200  
TBE FIRM #5951

DEVELOPMENT PLANS FOR  
**BREEZY HILL**  
PHASE III  
ROCKWALL, TEXAS

STORM SEWER PLAN AND PROFILE  
LINES 'D-1' & 'D-2'

DRAWN BY	DESIGNED BY	CHECKED BY	SHEET NO. <b>13 OF 20</b>
JOB NUMBER 14023	DATE JULY 2014	SCALE: HOR: 1"=40' VER: 1"=4'	

**AS-BUILT MARCH 2015**  
INFORMATION PROVIDED BY CONTRACTORS  
(NOT FIELD VERIFIED)