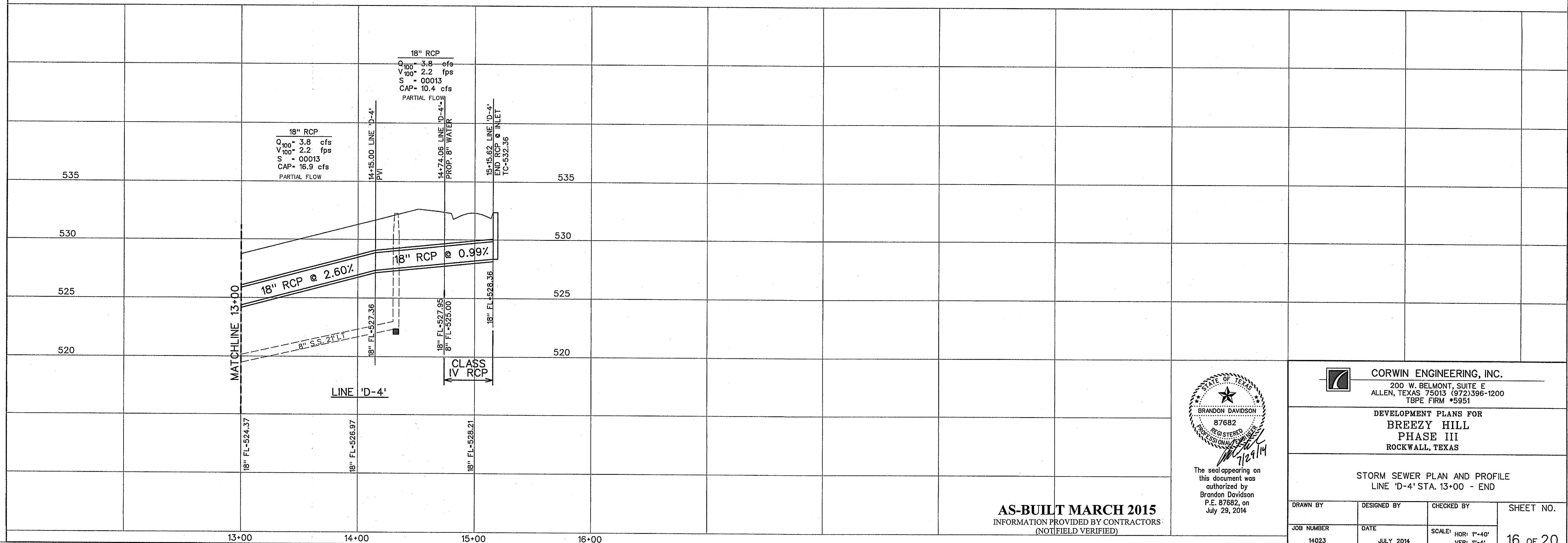
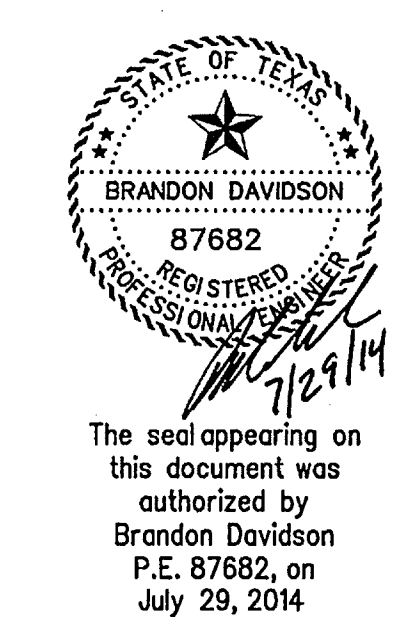


- LEGEND**
- (B) - BLOCK LABEL
 - (IN) - INLET NUMBER
 - (I) - CURVE NUMBER
 - - SANITARY SEWER
 - ⊕ - WATER
 - ==== - PROPOSED STORM SEWER
 - //// - EXISTING STORM SEWER



AS-BUILT MARCH 2015
INFORMATION PROVIDED BY CONTRACTORS
(NOT FIELD VERIFIED)



CORWIN ENGINEERING, INC. 200 W. BELMONT, SUITE E ALLEN, TEXAS 75013 (972)396-1200 TBPE FIRM #5951			
DEVELOPMENT PLANS FOR BREEZY HILL PHASE III ROCKWALL, TEXAS			
STORM SEWER PLAN AND PROFILE LINE 'D-4' STA. 13+00 - END			
DRAWN BY	DESIGNED BY	CHECKED BY	SHEET NO.
JOB NUMBER	DATE	SCALE: HOR: 1"=40' VER: 1"=4'	16 of 20
14023	JULY 2014		