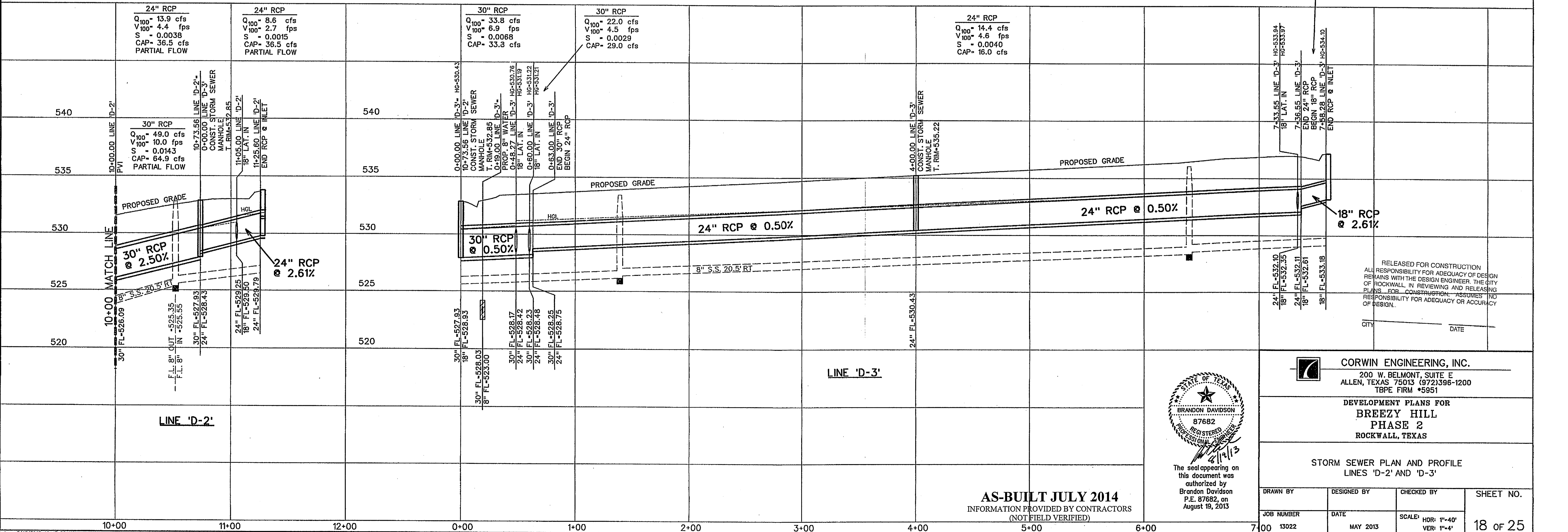


- LEGEND**
- (B) - BLOCK LABEL
 - (IN) - INLET NUMBER
 - (C) - CURVE NUMBER
 - (S) - SANITARY SEWER
 - (W) - WATER
 - (SS) - PROPOSED STORM SEWER

18" RCP
 Q₁₀₀ = 7.8 cfs
 V₁₀₀ = 4.4 fps
 S = 0.0056
 CAP = 17.0 cfs
 PARTIAL FLOW



The seal appearing on this document was authorized by
 Brandon Davidson
 P.E. 87682, on
 August 19, 2013

AS-BUILT JULY 2014
 INFORMATION PROVIDED BY CONTRACTORS
 (NOT FIELD VERIFIED)

CORWIN ENGINEERING, INC.
 200 W. BELMONT, SUITE E
 ALLEN, TEXAS 75013 (972)396-1200
 TBPE FIRM #5951

DEVELOPED PLANS FOR
BREEZY HILL
PHASE 2
ROCKWALL, TEXAS

STORM SEWER PLAN AND PROFILE
LINE 'D-2' AND 'D-3'

DRAWN BY	DESIGNED BY	CHECKED BY	SHEET NO.
JOB NUMBER	DATE	SCALE: HOR: 1"=40' VER: 1"=4"	18 of 25
13022	MAY 2013		