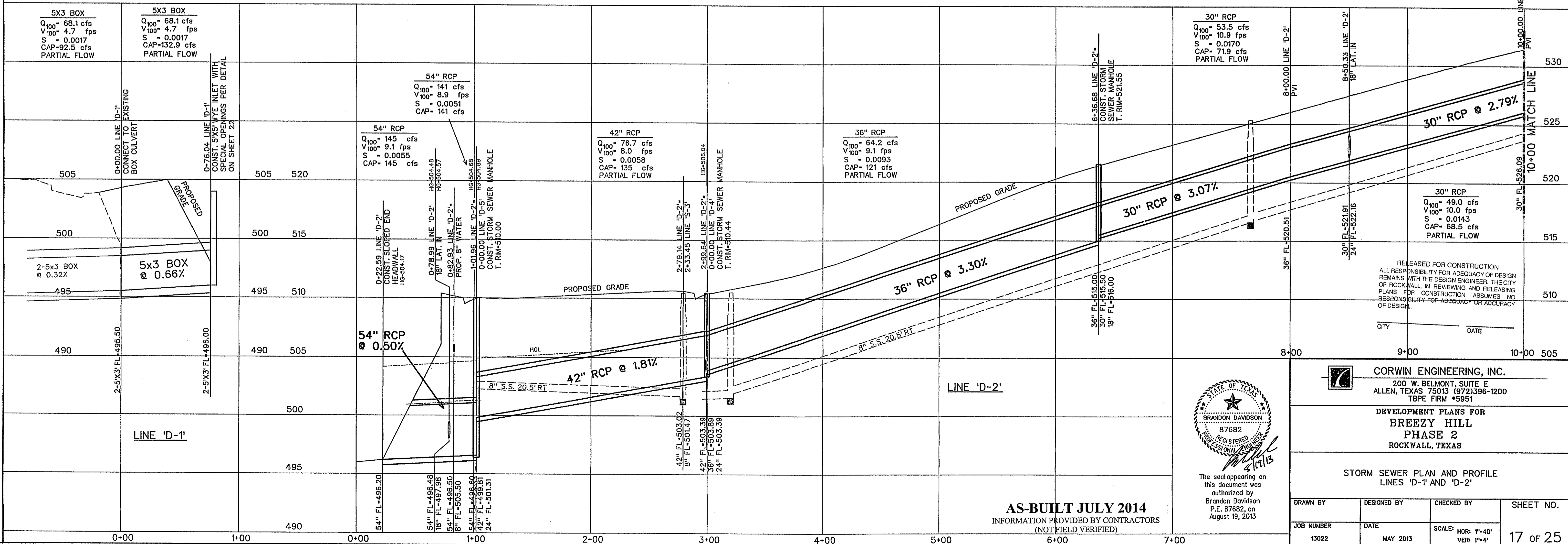
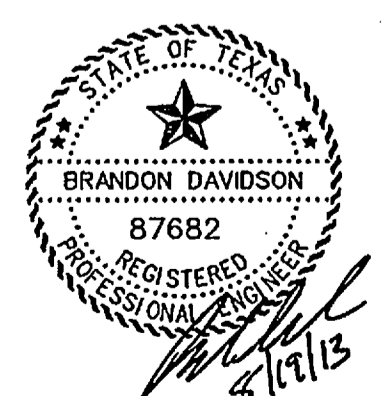


- LEGEND**
- (B) - BLOCK LABEL
 - (I) - INLET NUMBER
 - (C) - CURVE NUMBER
 - - SANITARY SEWER
 - ⊕ - WATER
 - ▬ - PROPOSED STORM SEWER



RELEASED FOR CONSTRUCTION
 ALL RESPONSIBILITY FOR ADEQUACY OF DESIGN
 REMAINS WITH THE DESIGN ENGINEER. THE CITY
 OF ROCKWALL, IN REVIEWING AND RELEASING
 PLANS FOR CONSTRUCTION, ASSUMES NO
 RESPONSIBILITY FOR ADEQUACY OR ACCURACY
 OF DESIGN.

CITY _____ DATE _____



The seal appearing on
 this document was
 authorized by
 Brandon Davidson
 P.E. 87682, on
 August 19, 2013

AS-BUILT JULY 2014
 INFORMATION PROVIDED BY CONTRACTORS
 (NOT FIELD VERIFIED)

CORWIN ENGINEERING, INC.
 200 W. BELMONT, SUITE E
 ALLEN, TEXAS 75013 (972)396-1200
 TBP FIRM #5951

DEVELOPMENT PLANS FOR
**BREEZY HILL
 PHASE 2**
 ROCKWALL, TEXAS

| | | | |
|---|-------------|----------------------------------|-----------|
| STORM SEWER PLAN AND PROFILE LINES 'D-1' AND 'D-2' | | | |
| DRAWN BY | DESIGNED BY | CHECKED BY | SHEET NO. |
| JOB NUMBER | DATE | SCALE: HOR: 1"=40' VER: 1"=4' | 17 OF 25 |
| 13022 | MAY 2013 | | |