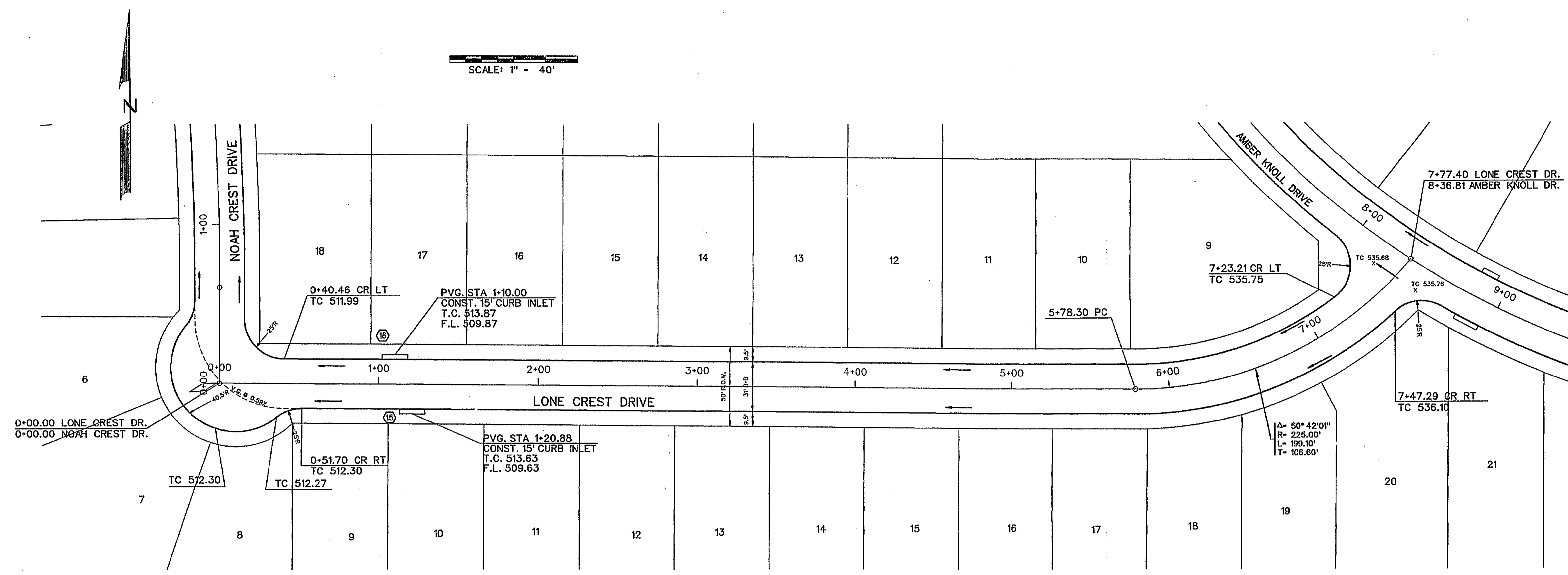
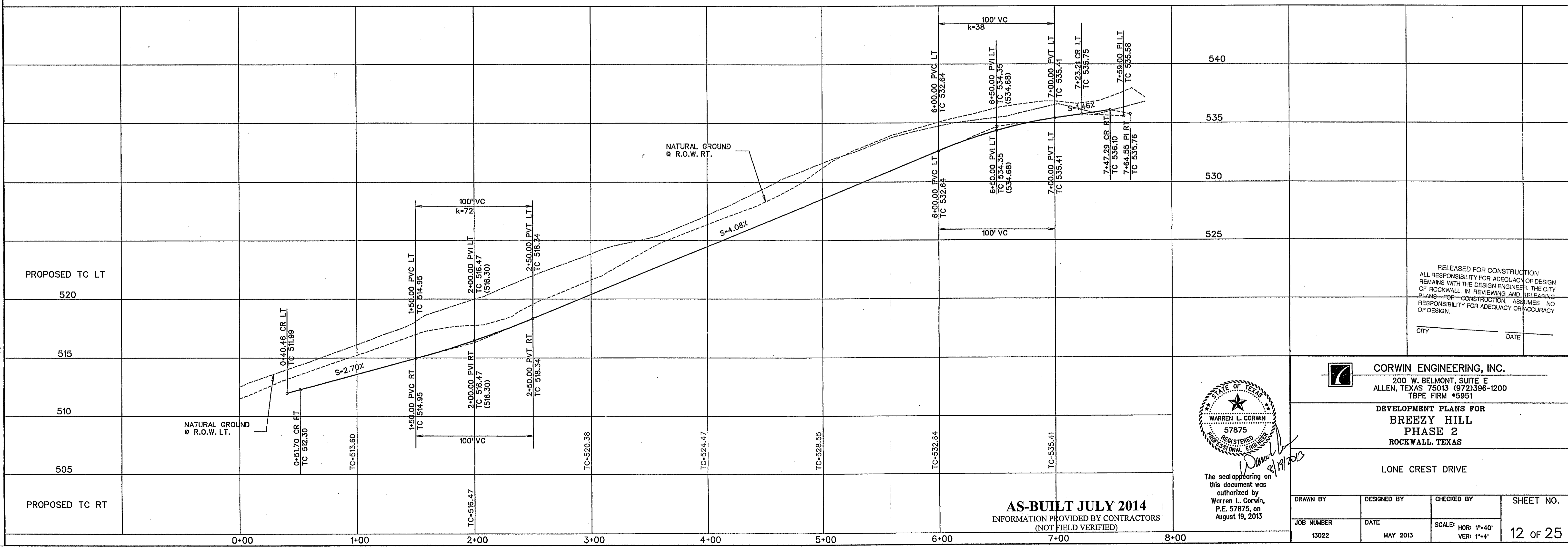
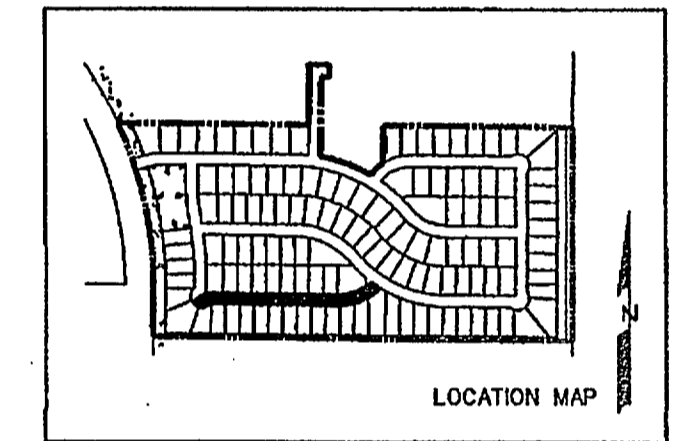


SCALE: 1" = 40'

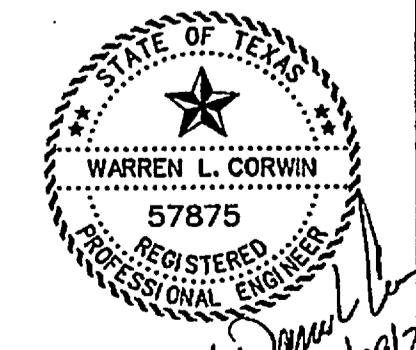


◇ - STREET NAME CHANGE



RELEASED FOR CONSTRUCTION
 ALL RESPONSIBILITY FOR ADEQUACY OF DESIGN
 REMAINS WITH THE DESIGN ENGINEER. THE CITY
 OF ROCKWALL, IN REVIEWING AND RELEASING
 PLANS FOR CONSTRUCTION, ASSUMES NO
 RESPONSIBILITY FOR ADEQUACY OR ACCURACY
 OF DESIGN.

CITY _____ DATE _____



The seal appearing on
 this document was
 authorized by
 Warren L. Corwin,
 P.E. 57875, on
 August 19, 2013

AS-BUILT JULY 2014
 INFORMATION PROVIDED BY CONTRACTORS
 (NOT FIELD VERIFIED)

CORWIN ENGINEERING, INC.
 200 W. BELMONT, SUITE E
 ALLEN, TEXAS 75013 (972)396-1200
 TBPE FIRM #5951

**DEVELOPMENT PLANS FOR
 BREEZY HILL
 PHASE 2
 ROCKWALL, TEXAS**

LONE CREST DRIVE

DRAWN BY	DESIGNED BY	CHECKED BY	SHEET NO.
JOB NUMBER	DATE	SCALE: HOR: 1"=40' VER: 1"=4'	12 OF 25
13022	MAY 2013		