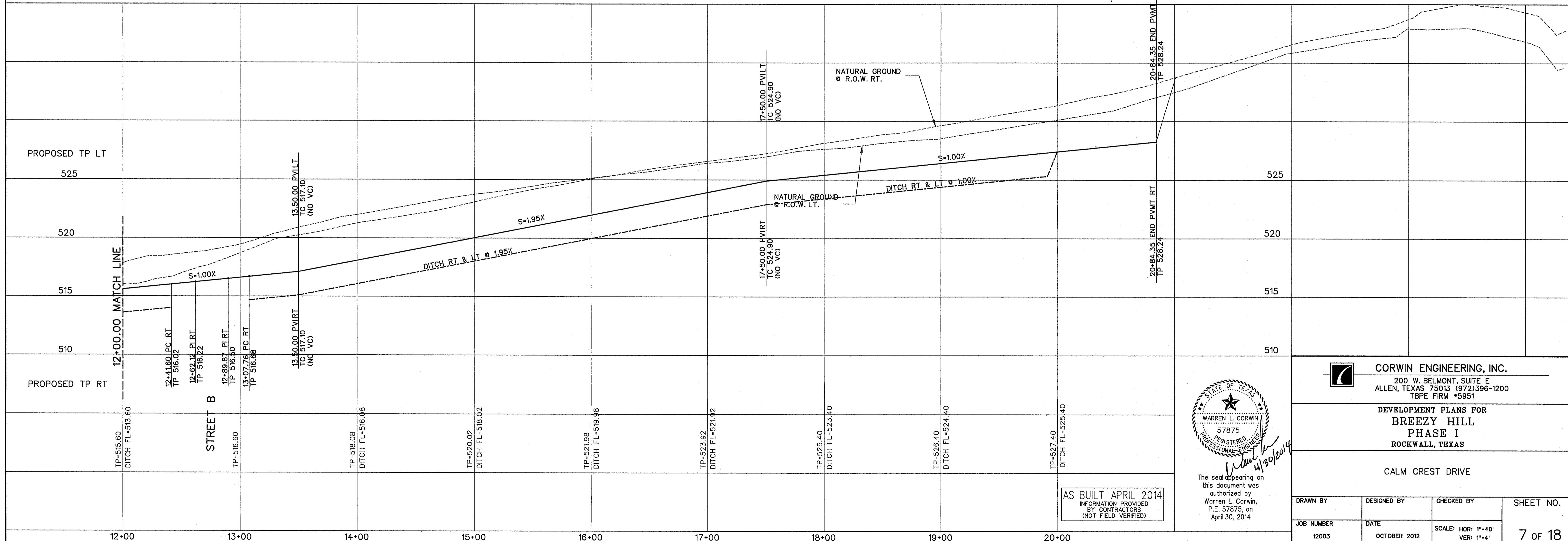
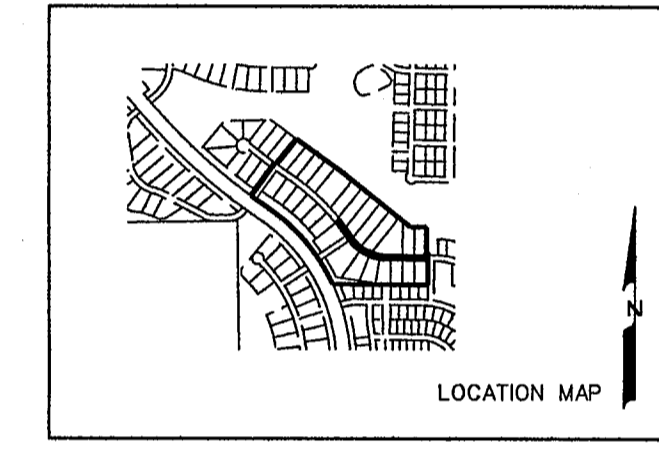
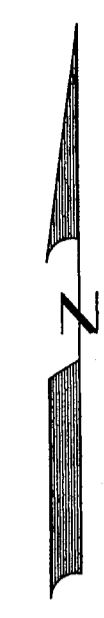


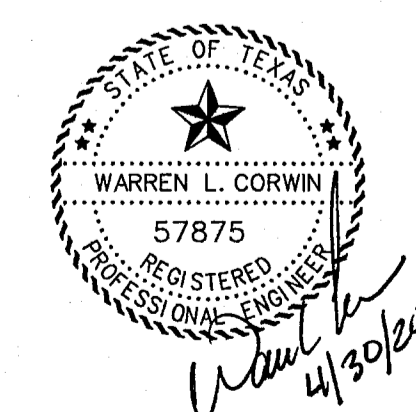
SCALE: 1" = 40'



CORWIN ENGINEERING, INC.
200 W. BELMONT, SUITE E
ALLEN, TEXAS 75013 (972)396-1200
TBPE FIRM #5951

DEVELOPMENT PLANS FOR
**BREEZY HILL
PHASE I**
ROCKWALL, TEXAS

CALM CREST DRIVE



DRAWN BY	DESIGNED BY	CHECKED BY	SHEET NO.
12003	OCTOBER 2012	SCALE: HOR: 1"=40' VER: 1"=4'	7 OF 18