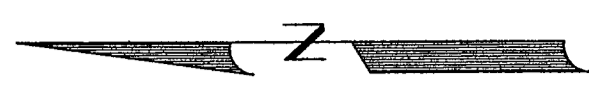
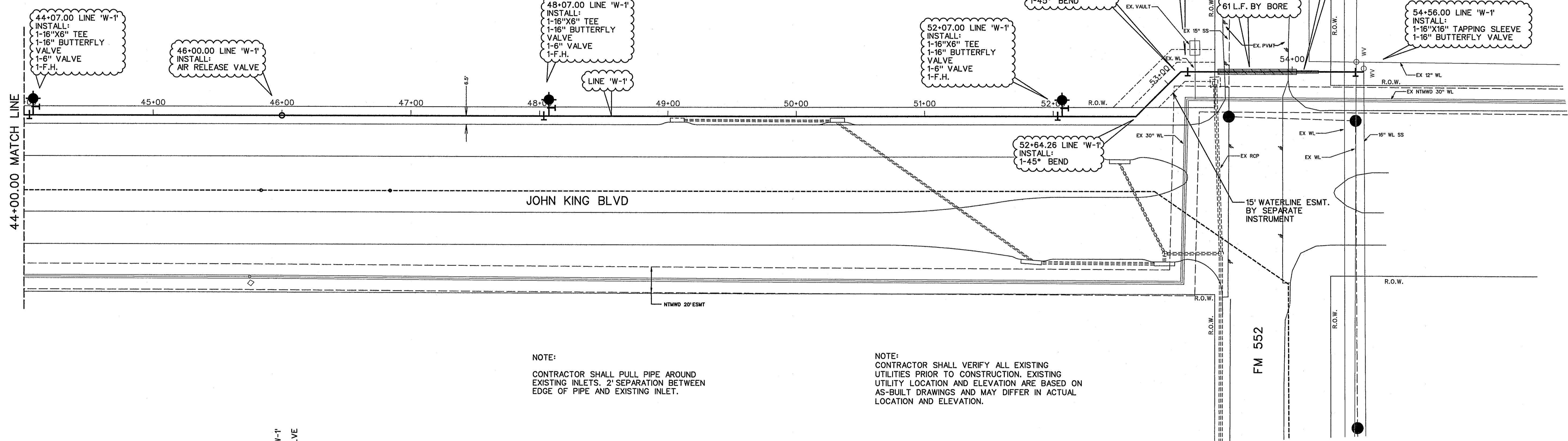


NOTE:
CONTRACTOR SHALL VERIFY ALL UTILITIES
FOR LOCATION AND ELEVATION PRIOR
TO CONSTRUCTION.

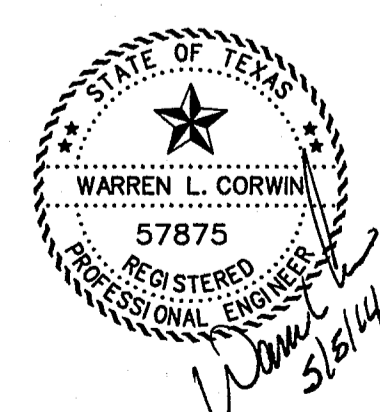
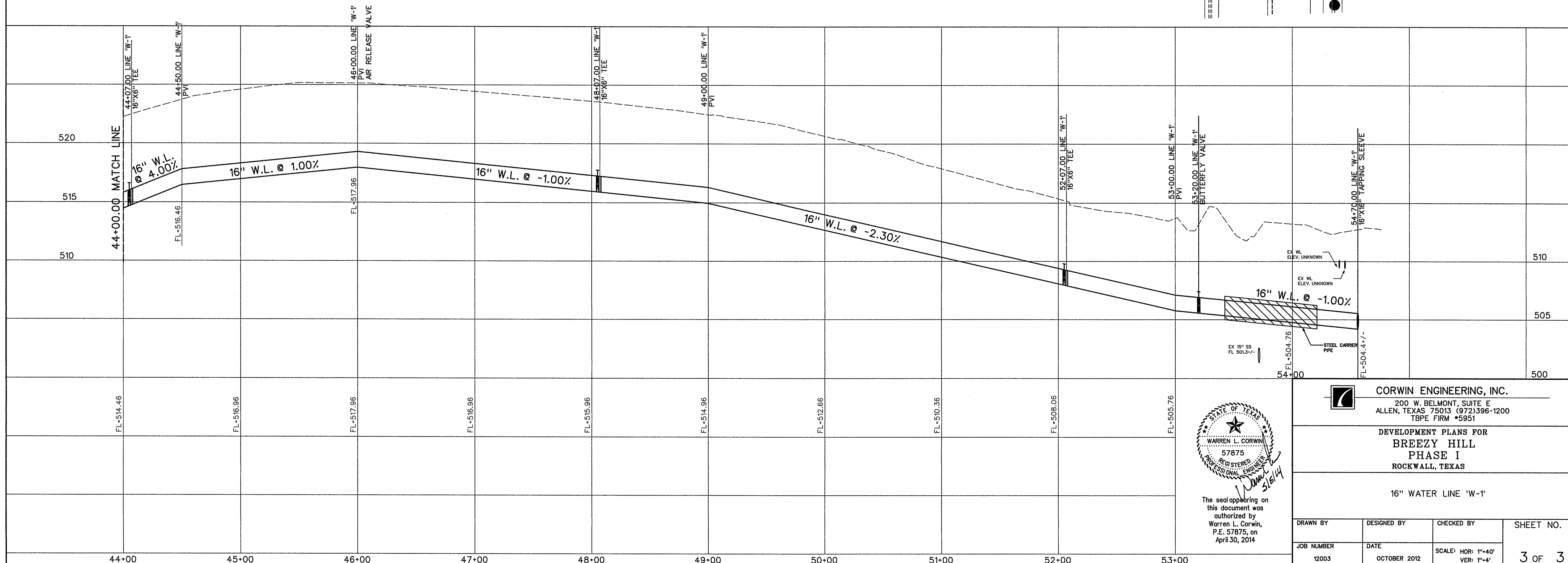


SCALE: 1" = 40'



NOTE:
CONTRACTOR SHALL PULL PIPE AROUND
EXISTING INLETS, 2' SEPARATION BETWEEN
EDGE OF PIPE AND EXISTING INLET.

NOTE:
CONTRACTOR SHALL VERIFY ALL EXISTING
UTILITIES PRIOR TO CONSTRUCTION. EXISTING
UTILITY LOCATION AND ELEVATION ARE BASED ON
AS-BUILT DRAWINGS AND MAY DIFFER IN ACTUAL
LOCATION AND ELEVATION.



The seal appearing on
this document was
authorized by
Warren L. Corwin,
P.E. 57875, on
April 30, 2014

CORWIN ENGINEERING, INC.
200 W. BELMONT, SUITE E
ALLEN, TEXAS 75013 (972)396-1200
TBPE FIRM #5951

DEVELOPMENT PLANS FOR
**BREEZY HILL
PHASE I**
ROCKWALL, TEXAS

16" WATER LINE 'W-1'

DRAWN BY 12003	DESIGNED BY OCTOBER 2012	CHECKED BY SCALE: HOR: 1"=40' VER: 1"=4'	SHEET NO. 3 OF 3
-------------------	-----------------------------	--	---------------------