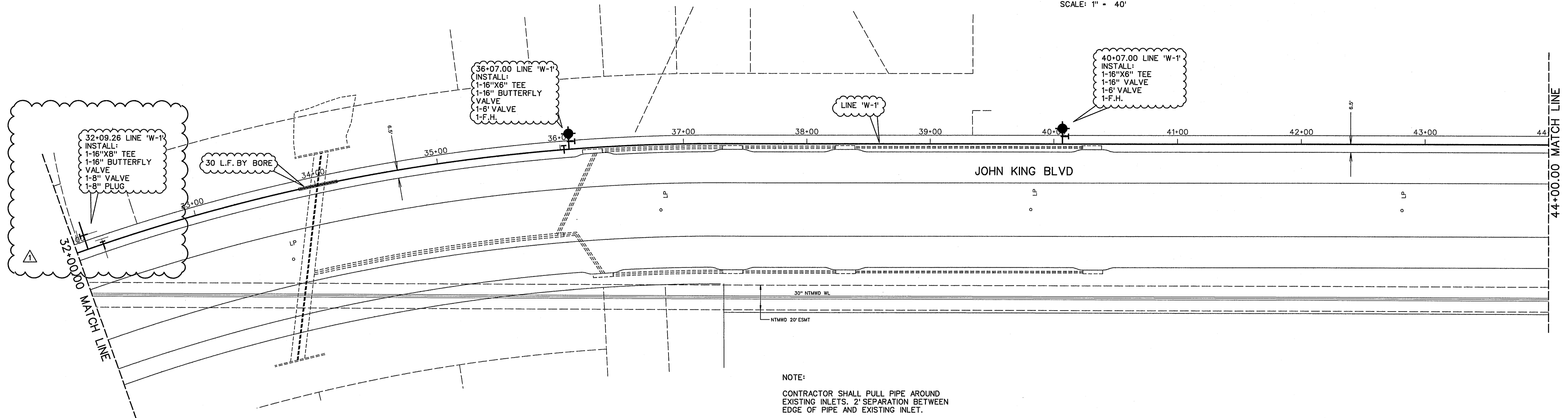
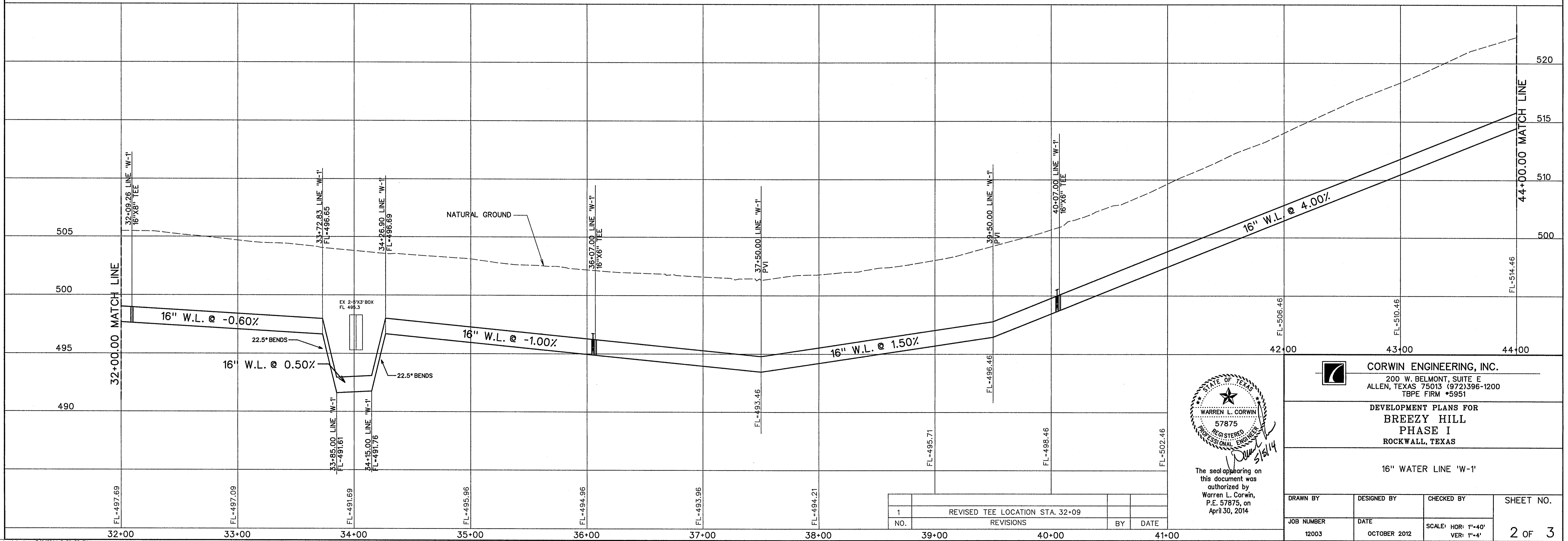


SCALE: 1" = 40'

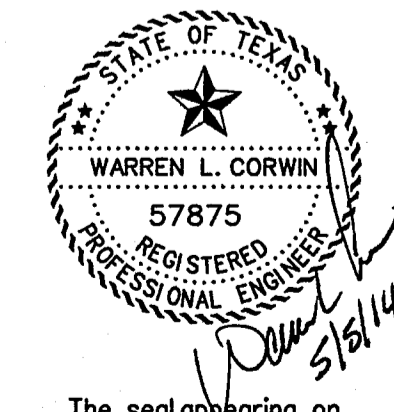


NOTE:
 CONTRACTOR SHALL PULL PIPE AROUND EXISTING INLETS. 2' SEPARATION BETWEEN EDGE OF PIPE AND EXISTING INLET.

NOTE:
 CONTRACTOR SHALL VERIFY ALL EXISTING UTILITIES PRIOR TO CONSTRUCTION. EXISTING UTILITY LOCATION AND ELEVATION ARE BASED ON AS-BUILT DRAWINGS AND MAY DIFFER IN ACTUAL LOCATION AND ELEVATION.



NO.	REVISIONS	BY	DATE
1	REVISED TEE LOCATION STA. 32+09		



The seal appearing on this document was authorized by Warren L. Corwin, P.E. 57875, on April 30, 2014

CORWIN ENGINEERING, INC.
 200 W. BELMONT, SUITE E
 ALLEN, TEXAS 75013 (972)396-1200
 TBPE FIRM #5951

DEVELOPMENT PLANS FOR
BREEZY HILL
 PHASE I
 ROCKWALL, TEXAS

16" WATER LINE 'W-1'

DRAWN BY	DESIGNED BY	CHECKED BY	SHEET NO.
JOB NUMBER	DATE	SCALE: HOR: 1"=40' VER: 1"=4'	2 OF 3
12003	OCTOBER 2012		