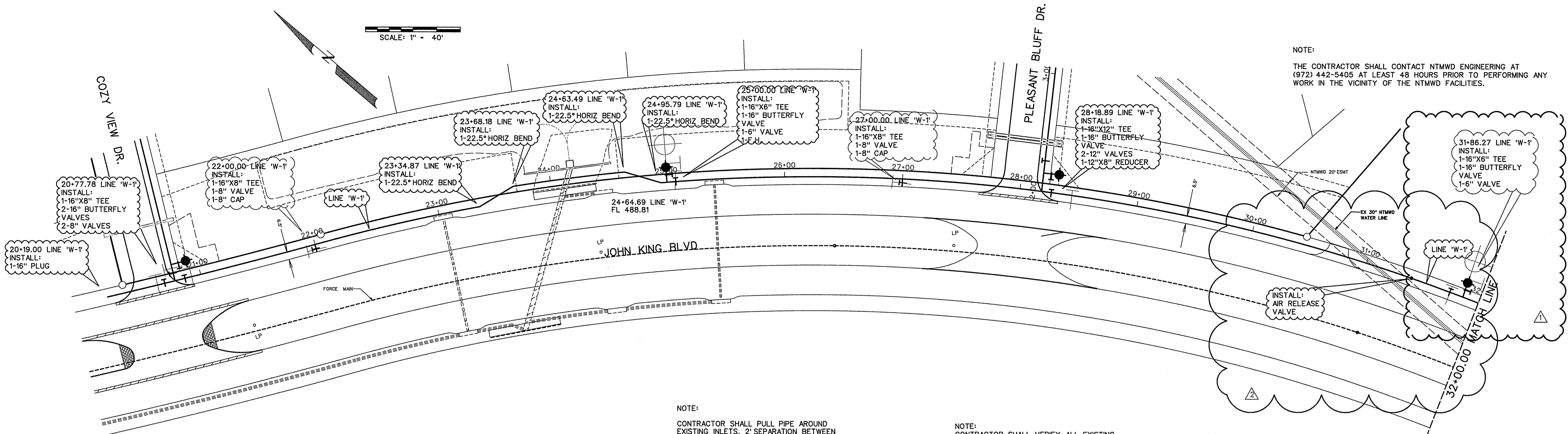


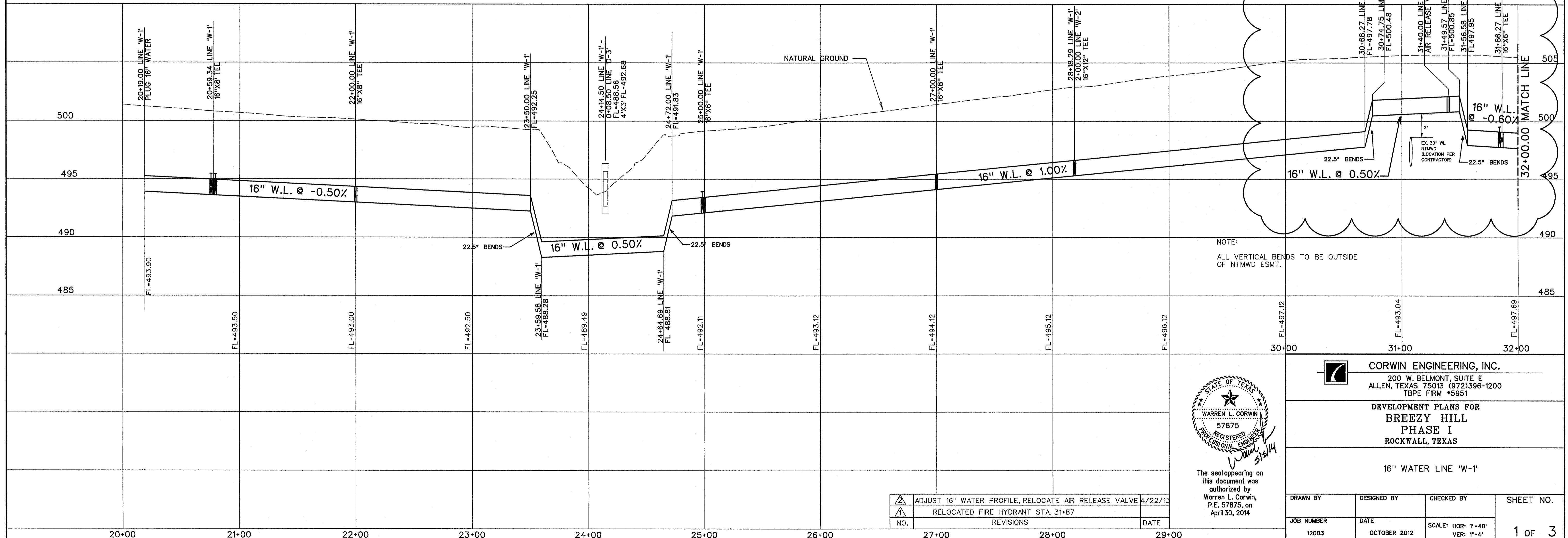
SCALE: 1" = 40'



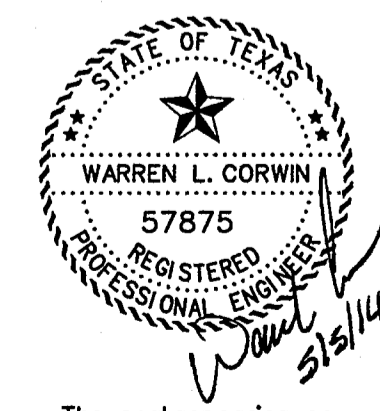
NOTE:
THE CONTRACTOR SHALL CONTACT NTMWD ENGINEERING AT (972) 442-5405 AT LEAST 48 HOURS PRIOR TO PERFORMING ANY WORK IN THE VICINITY OF THE NTMWD FACILITIES.

NOTE:
CONTRACTOR SHALL PULL PIPE AROUND EXISTING INLETS. 2' SEPARATION BETWEEN EDGE OF PIPE AND EXISTING INLET.

NOTE:
CONTRACTOR SHALL VERIFY ALL EXISTING UTILITIES PRIOR TO CONSTRUCTION. EXISTING UTILITY LOCATION AND ELEVATION ARE BASED ON AS-BUILT DRAWINGS AND MAY DIFFER IN ACTUAL LOCATION AND ELEVATION.



NOTE:
ALL VERTICAL BENDS TO BE OUTSIDE OF NTMWD ESMT.



The seal appearing on this document was authorized by Warren L. Corwin, P.E. 57875, on April 30, 2014

CORWIN ENGINEERING, INC.
200 W. BELMONT, SUITE E
ALLEN, TEXAS 75013 (972)396-1200
TBE FIRM #5951

DEVELOPMENT PLANS FOR
BREEZY HILL
PHASE I
ROCKWALL, TEXAS

16" WATER LINE 'W-1'			
DRAWN BY	DESIGNED BY	CHECKED BY	SHEET NO.
JOB NUMBER	DATE	SCALE: HOR: 1"=40'	1 OF 3
12003	OCTOBER 2012	VER: 1"=4'	

NO.	REVISIONS	DATE
1	ADJUST 16" WATER PROFILE, RELOCATE AIR RELEASE VALVE	4/22/13
2	RELOCATED FIRE HYDRANT STA. 31+87	