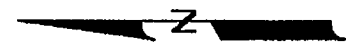
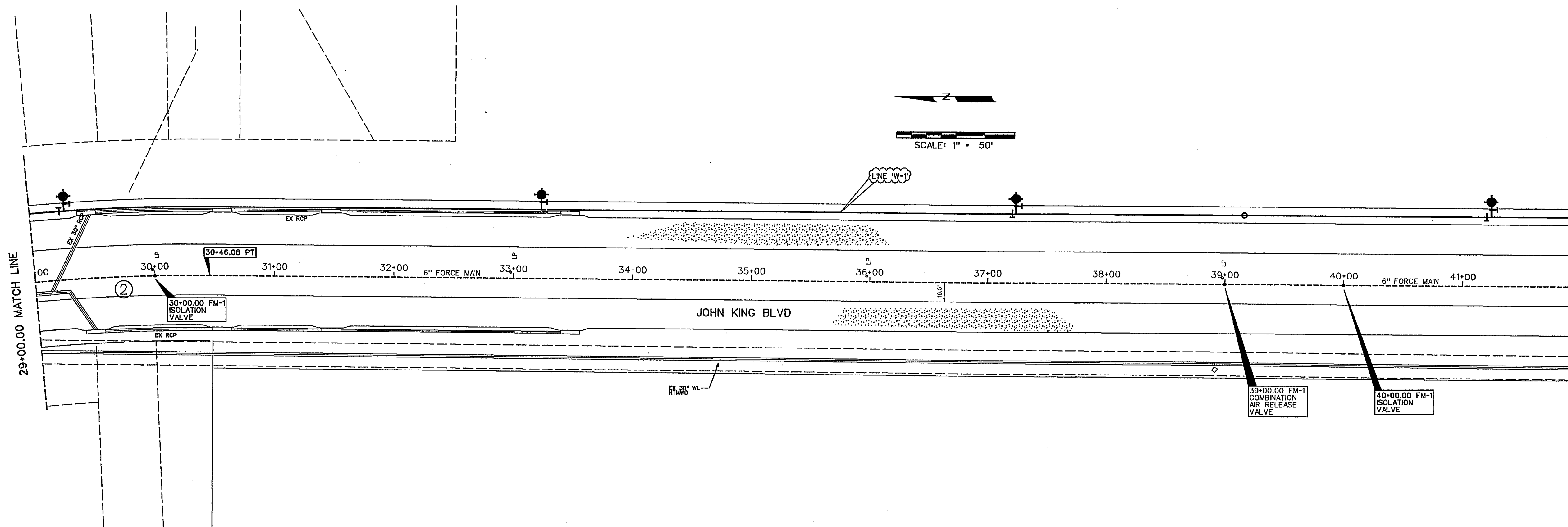


CURVE TABLE			
CURVE NO.	DELTA	RADIUS	LENGTH
2.	56°17'37"	1495.00'	1468.85'
			TANGENT 799.83'



SCALE: 1" = 50'

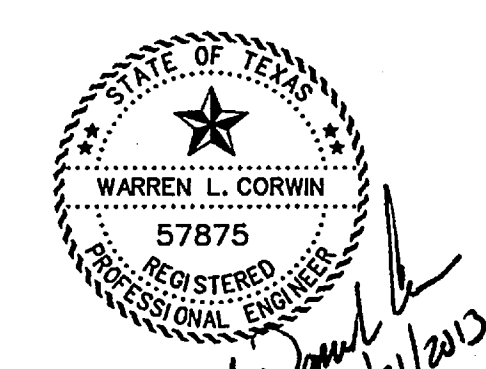


- LEGEND**
- FM- FORCE MAIN
 - TS- TRAFFIC SIGN
 - FOC-FIBER OPTIC CABLE MARKER
 - ICV- IRRIGATION CONTROL VALVE
 - LP- LIGHT POLE
 - WV- WATER VALVE
 - PP- POWER POLE
 - GW- GUY WIRE
 - ELEC-ELECTRIC MARKER
 - TEL-TELEPHONE MARKER
 - ATT-ATT MARKER OR BOX
 - SWB-TELEPHONE MARKER
 - WL- WATER LINE
 - RCP-REINFORCED CONCRETE PIPE
 - RCB-REINFORCED CONCRETE BOX

NOTE:
EXISTING UTILITIES SHOWN ARE A GRAPHICAL REPRESENTATION OF THE LOCATION BASED ON AS-BUILT DRAWINGS. ACTUAL LOCATION AND ELEVATION MAY BE DIFFERENT. CONTRACTOR MUST VERIFY ALL EXISTING UTILITIES FOR LOCATION AND ELEVATION PRIOR TO CONSTRUCTION.


NOTE:
ALL FORCE MAIN TO BE AWWA C-900 PIPE DR14, COLORED GREEN.
INSTALL GREEN SANITARY SEWER MARKER POSTS APPROX. EVERY 250 FEET ABOVE FORCE MAIN.
CAUTION: LIGHT POLE CONDUIT IN MEDIAN OF JOHN KING BLVD. ANY DAMAGE SHALL BE REPAIRED AT THE CONTRACTOR'S EXPENSE TO THE SATISFACTION OF THE CITY OF ROCKWALL.
DETECTOR TAPE SHALL BE REQUIRED ALONG FORCE MAIN. SEE TCEQ 217.66

- NOTES:**
1. CONTRACTOR TO ADJUST LOCATION OF FORCE MAIN TO AVOID EXISTING PUBLIC AND PRIVATE UTILITIES AS NECESSARY.
 2. CONTRACTOR TO REPLACE ANY PAVEMENT, SIGNS, FENCES ETC. DAMAGED IN CONSTRUCTION AT OWN EXPENSE.
 3. CONTRACTOR TO USE MANUFACTURED BENDS AND PULL PIPE TO REQUIRED ALIGNMENT.
 4. CONTRACTOR IS RESPONSIBLE FOR TRAFFIC CONTROL AND SIGNAGE DURING ALL PHASES OF CONSTRUCTION.



The seal appearing on this document was authorized by Warren L. Corwin, P.E. 57875, on June 21, 2013

AS-BUILT APRIL 2014
INFORMATION PROVIDED BY CONTRACTORS (NOT FIELD VERIFIED)

 CORWIN ENGINEERING, INC. 200 W. BELMONT, SUITE E ALLEN, TEXAS 75013 (972) 396-1200 TBPE FIRM #5951			
DEVELOPMENT PLANS FOR BREEZY HILL FORCE MAIN ROCKWALL, TEXAS			
FORCE MAIN PLAN			
DRAWN BY	DESIGNED BY	CHECKED BY	SHEET NO.
JOB NUMBER 12003F	DATE JANUARY 2013	SCALE: 1"=50'	3 OF 9